

COMMUNICATION PULL BOX LOCATIONS		
COORDINATES		
CPB	NORTH	EAST
C1	410787.0908	1916109.3343
C2	410826.6197	1916058.8095
C3	410888.2819	1916012.6922
C4	410981.3941	1915942.1169
C5	410941.1299	1915888.2806

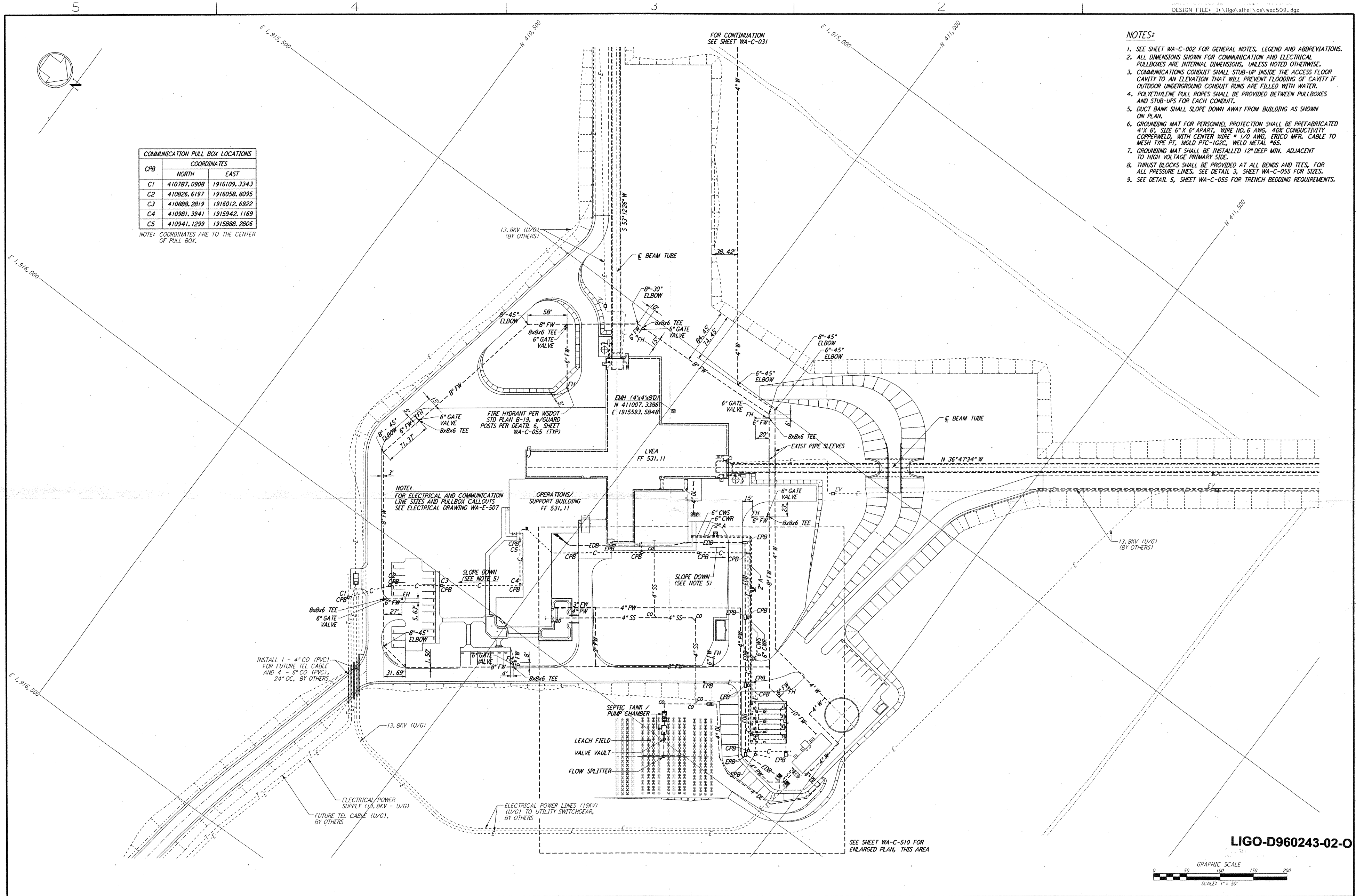
NOTE: COORDINATES ARE TO THE CENTER OF PULL BOX.

NOTES:

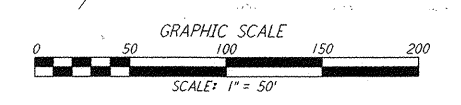
- SEE SHEET WA-C-002 FOR GENERAL NOTES, LEGEND AND ABBREVIATIONS.
- ALL DIMENSIONS SHOWN FOR COMMUNICATION AND ELECTRICAL PULLBOXES ARE INTERNAL DIMENSIONS, UNLESS NOTED OTHERWISE.
- COMMUNICATIONS CONDUIT SHALL STUB-UP INSIDE THE ACCESS FLOOR CAVITY TO AN ELEVATION THAT WILL PREVENT FLOODING OF CAVITY IF OUTDOOR UNDERGROUND CONDUIT RUNS ARE FILLED WITH WATER.
- POLYETHYLENE PULL ROPES SHALL BE PROVIDED BETWEEN PULLBOXES AND STUB-UPS FOR EACH CONDUIT.
- DUCT BANK SHALL SLOPE DOWN AWAY FROM BUILDING AS SHOWN ON PLAN.
- GROUNDING MAT FOR PERSONNEL PROTECTION SHALL BE PREFABRICATED 4' X 6' SIZE 6" X 6" APART, WIRE NO. 6 AWG, 400X CONDUCTIVITY COPPERWELD, WITH CENTER WIRE # 1/0 AWG, ERICO MFR. CABLE TO MESH TYPE PT, MOLD PTC-1G2C, WELD METAL #6S.
- GROUNDING MAT SHALL BE INSTALLED 12" DEEP MIN. ADJACENT TO HIGH VOLTAGE PRIMARY SIDE.
- THRUST BLOCKS SHALL BE PROVIDED AT ALL BENDS AND TEES, FOR ALL PRESSURE LINES. SEE DETAIL 3, SHEET WA-C-055 FOR SIZES.
- SEE DETAIL 5, SHEET WA-C-055 FOR TRENCH BEDDING REQUIREMENTS.

This document and the design it covers are the property of PARSONS. They are loaned only with the borrower's expressed written agreement that they will not be reproduced, copied, loaned, exhibited, or used in any other way, except by written consent from PARSONS to the borrower.

This document and the design it covers are the property of PARSONS. They are loaned only with the borrower's expressed written agreement that they will not be reproduced, copied, loaned, exhibited, or used in any other way, except by written consent from PARSONS to the borrower.



LIGO-D960243-02-0



NO.	DATE	BY	CHKD	ENGR	PROJ	DESCRIPTION
2	5/15/98	WRB	ML	JB	MDW	ISSUED FOR AS-BUILT
1	2-28-97	WRB	ML	JB	MDW	ADDED WALK/WALL OPENING, REVISED GRADING

FOR CONSTRUCTION		
DRAWN	WRB	10/5/95
CHECKED	ML	7/9/96
ENGINEER	JB	7/9/96
PROJ	MDW	7/9/96

AS-BUILT DRAWINGS

PARSONS
100 WEST WALNUT STREET
PASADENA, CALIFORNIA

LIGO
CALIFORNIA INSTITUTE OF TECHNOLOGY
MASSACHUSETTS INSTITUTE OF TECHNOLOGY

LASER INTERFEROMETER
GRAVITATIONAL-WAVE OBSERVATORY
SITE NO. 1 - HANFORD, WASHINGTON

CIVIL CORNER STATION
UTILITY PLAN

SCALE: 1" = 50'
CONTRACT NUMBER: PPI50969
PROJECT NUMBER: 8094
SHEET NUMBER: WA-C-509