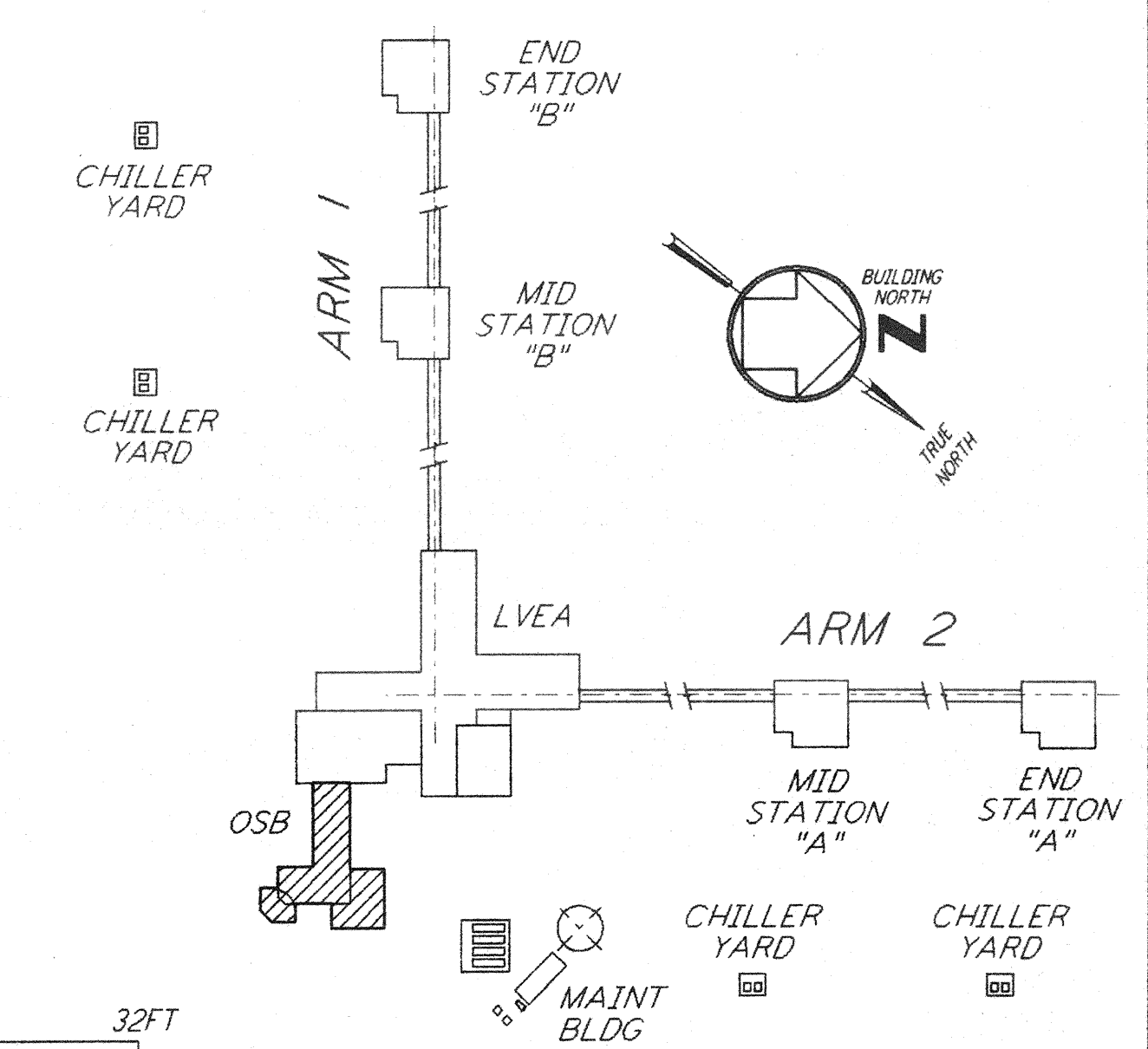
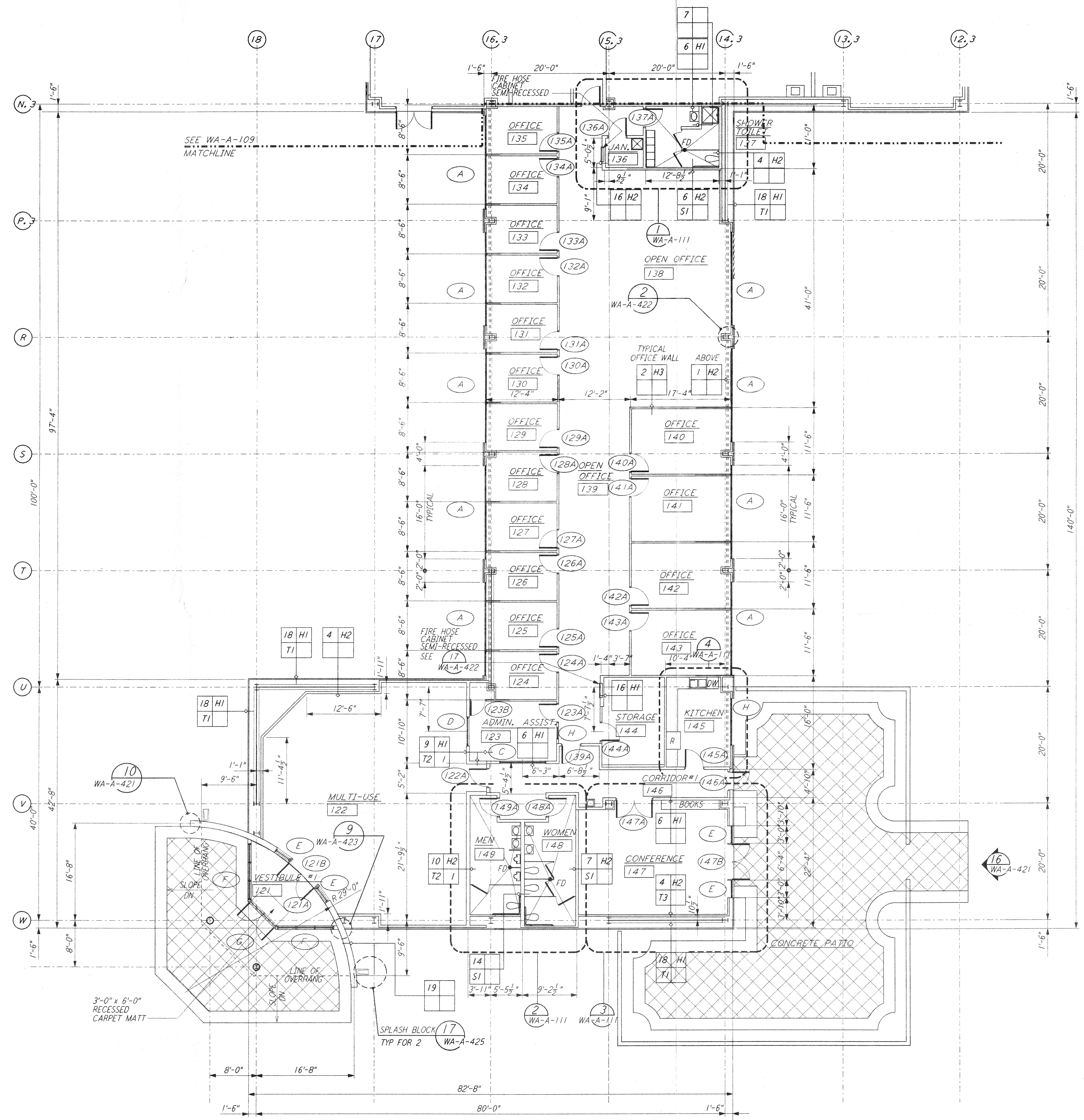


NOTE: SEE SPECIFICATIONS FOR ADDITIONAL INFORMATION AND SCHEDULES



0 8 16 24 32 FT  
 1/8" = 1'-0"  
 DATUM POINT EL +100.00 = 531.11' (LVEA)  
 DATUM POINT EL +100.00 = 531.11' (OSB)

This document and the design it covers are the property of PARSONS. They are loaned only with the borrower's expressed written agreement that they will not be reproduced, copied, loaned, exhibited, or used in any other way, except by written consent from PARSONS.

NO.	DATE	BY	CHKD	ENGR	PROJ	DESCRIPTION

ISSUED FOR CONSTRUCTION	
DRAWN	SF/CKT 5-12-96
CHECKED	TB 5-26-96
ENGINEER	EKK 7-12-96
PROJ	BLW 7/19/96



**PARSONS**  
 100 WEST WALNUT STREET  
 PASADENA, CALIFORNIA

**LIGO**  
 CALIFORNIA INSTITUTE OF TECHNOLOGY  
 MASSACHUSETTS INSTITUTE OF TECHNOLOGY

LASER INTERFEROMETER  
 GRAVITATIONAL-WAVE OBSERVATORY  
 SITE NO. 1 - HANFORD, WASHINGTON

TITLE	ARCHITECTURAL CORNER STATION OSB PARTIAL FLOOR PLAN SHEET 1	SCALE	AS NOTED	CONTRACT NUMBER	PP150969	PROJECT NUMBER	8094
SHEET NUMBER	WA-A-108	REVISIONS					

LIGO-D960248-00-0 LIGOWAF3.BDR