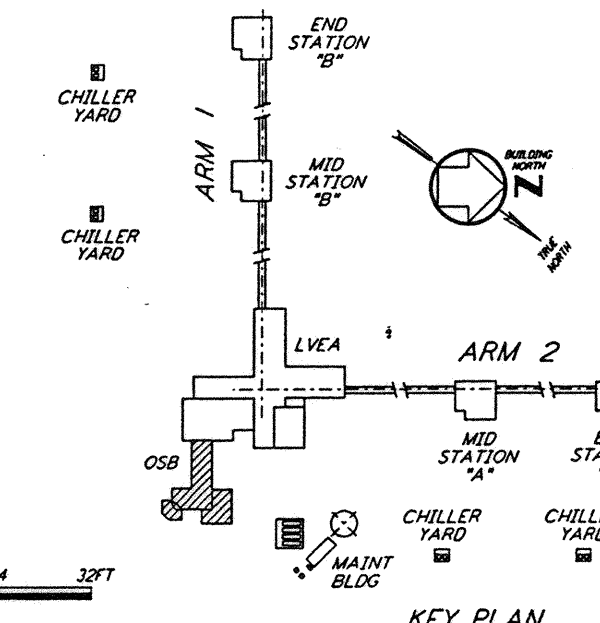
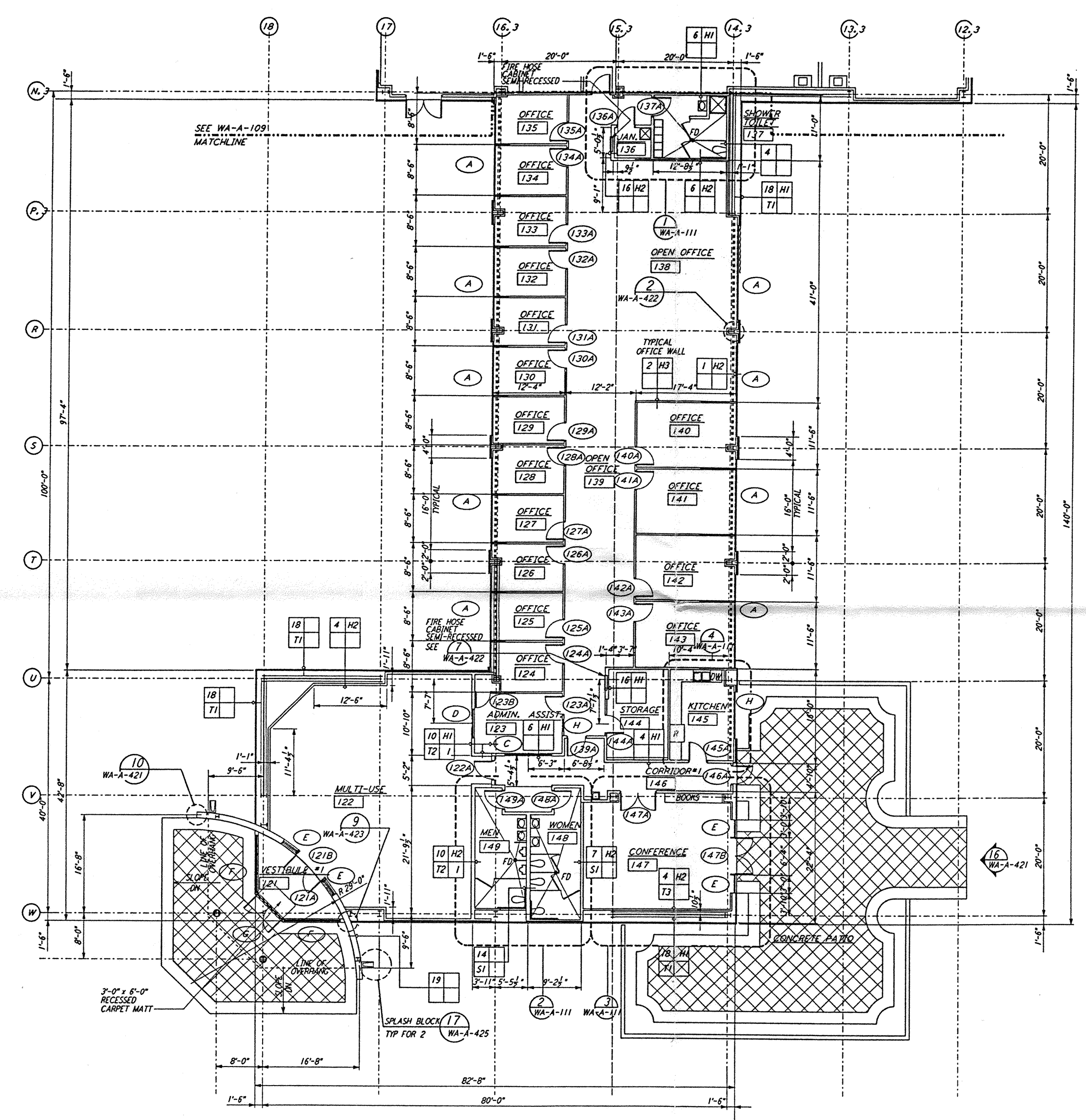
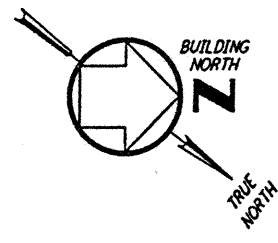


NOTE: SEE SPECIFICATIONS FOR
 ADDITIONAL INFORMATION
 AND SCHEDULES



0 8 16 24 32 FT
 1/4" = 1'-0"
 DATUM POINT EL +100.00 = 531.11' (LVEA)
 DATUM POINT EL +100.00 = 531.11' (OSB)

This document and the design it covers are the property of PARSONS. They are loaned only with the borrower's expressed written agreement that they will not be reproduced, copied, loaned, exhibited, or used in any other way, except by written consent from PARSONS to the borrower.

NO.	DATE	BY	CHKD	ENGR	PROJ	DESCRIPTION
B	4-19-96	SF	SF	TDM		FINAL DESIGN REVIEW & BID
A	01/17/96	SF	SF	TDM		PRELIMINARY DESIGN REVIEW

DRAWN	SF/CRT
CHECKED	
ENGINEER	
PROJ	

PARSONS
 100 WEST WALNUT STREET
 PASADENA, CALIFORNIA

LIGO
 CALIFORNIA INSTITUTE OF TECHNOLOGY
 MASSACHUSETTS INSTITUTE OF TECHNOLOGY

LASER INTERFEROMETER
 GRAVITATIONAL-WAVE OBSERVATORY
 SITE NO. 1 -- HANFORD, WASHINGTON
 ARCHITECTURAL
 CORNER STATION
 OSB PARTIAL FLOOR PLAN
 SHEET 1
 WA-A-108

LIGO-D760248-B-01

LIGOVAF3.BOR