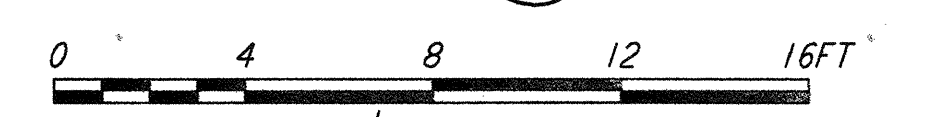
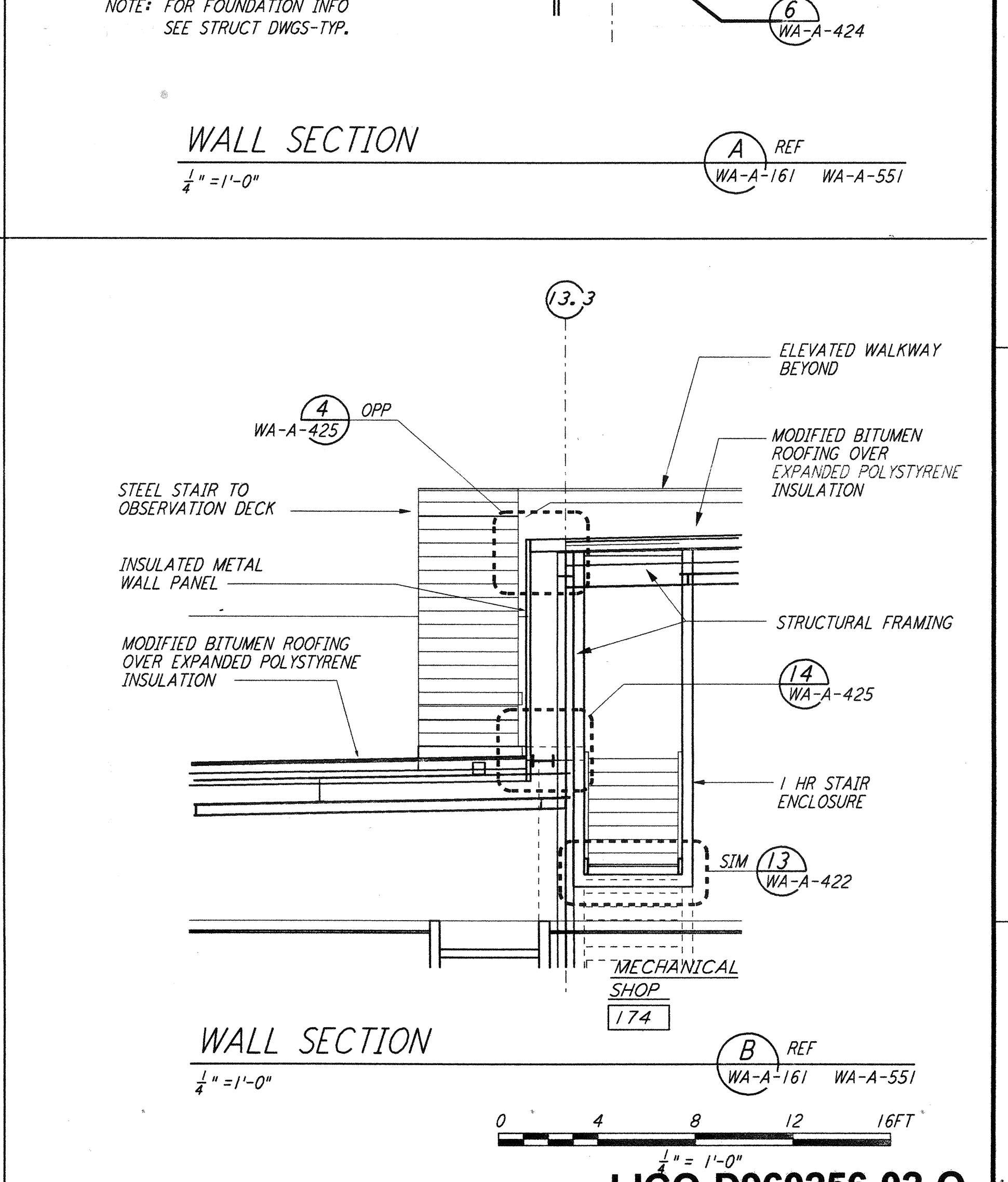
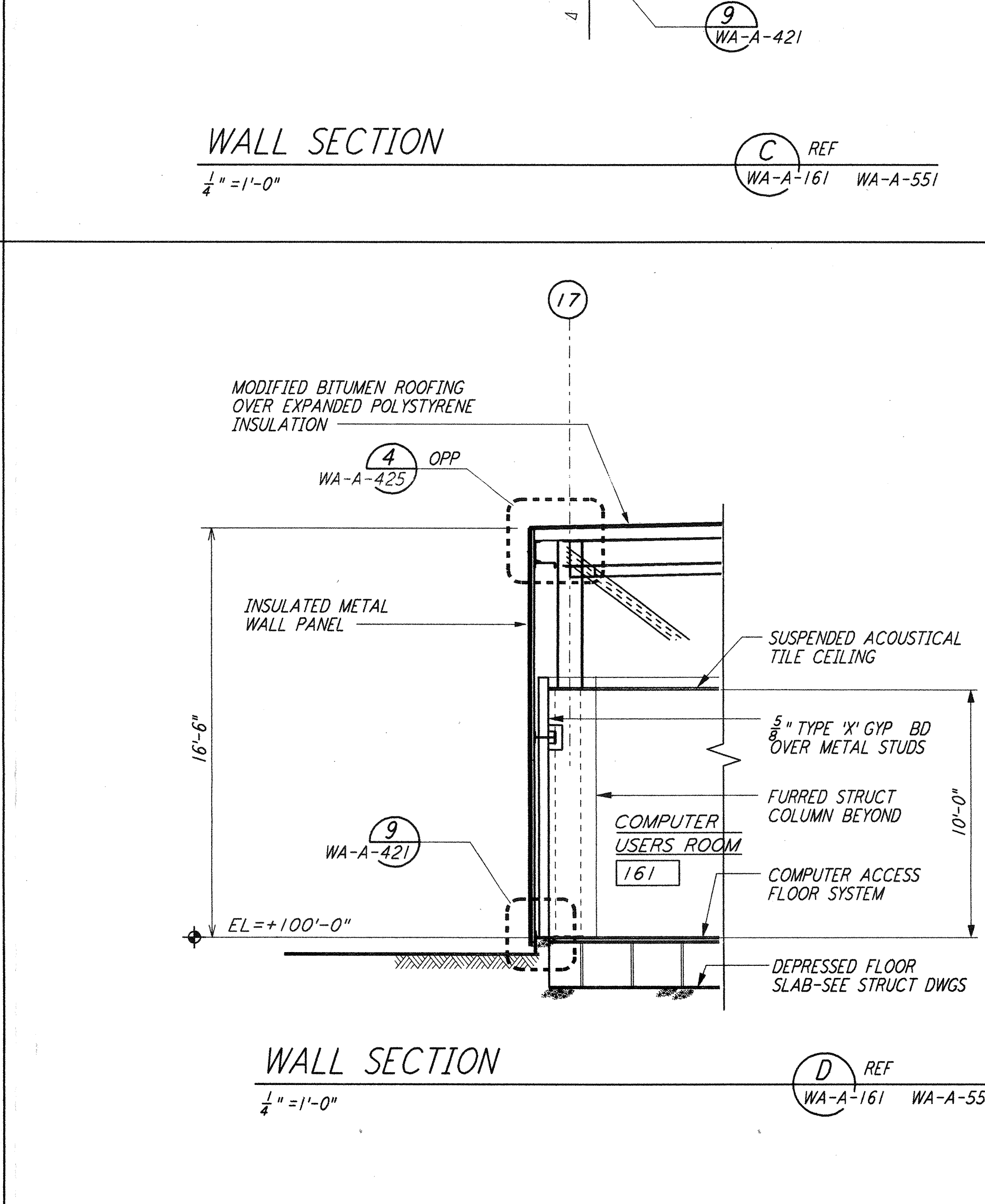
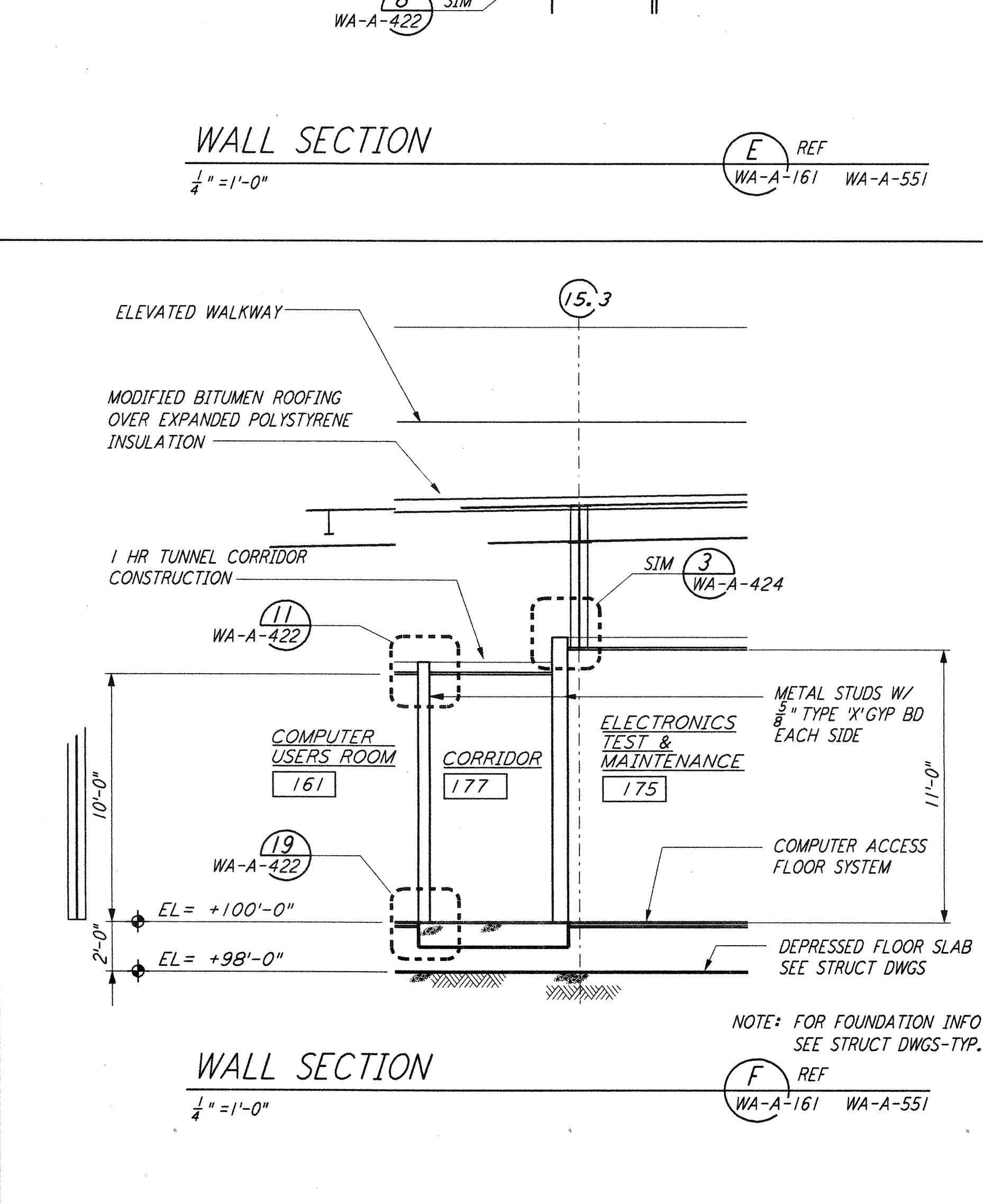
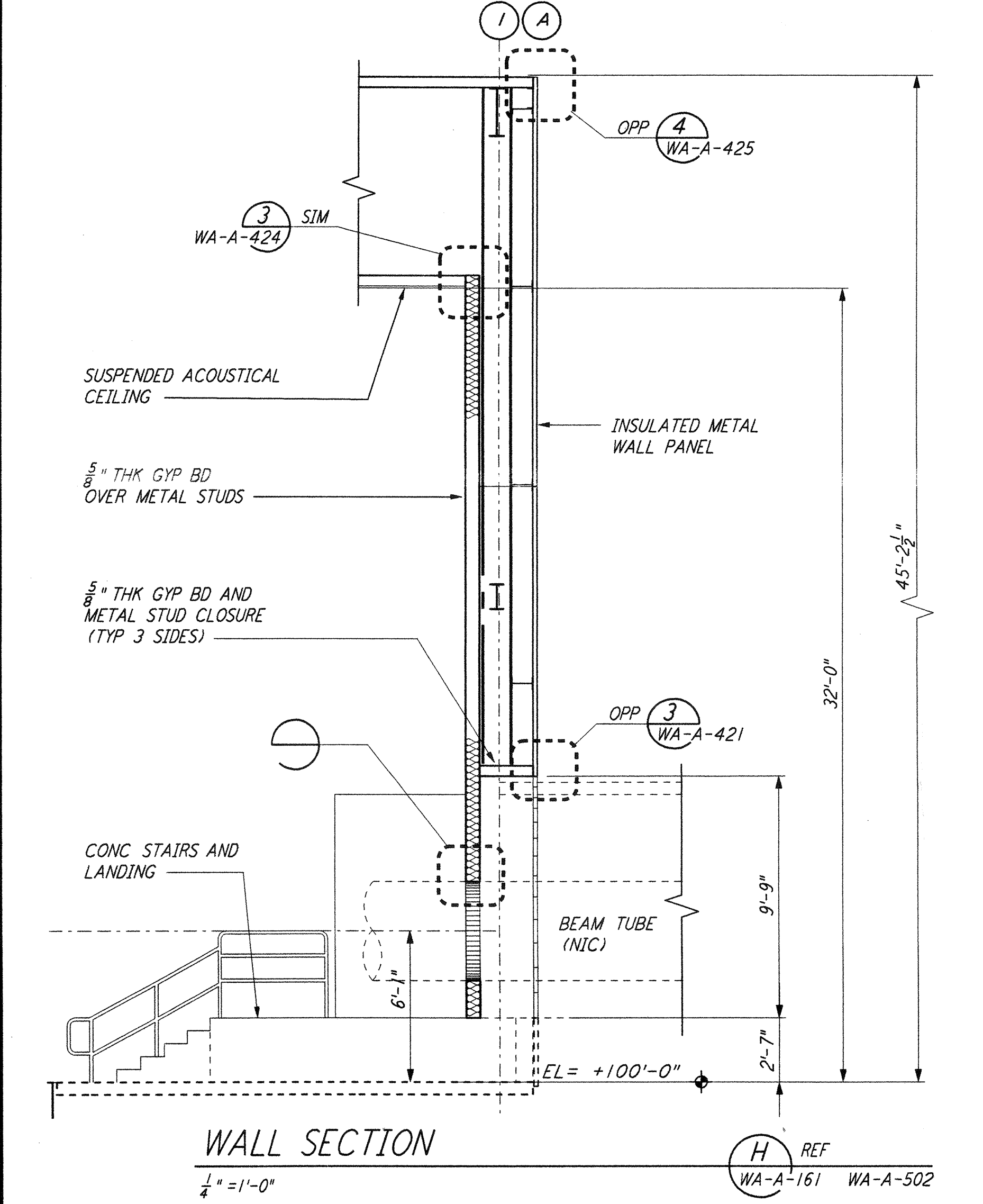
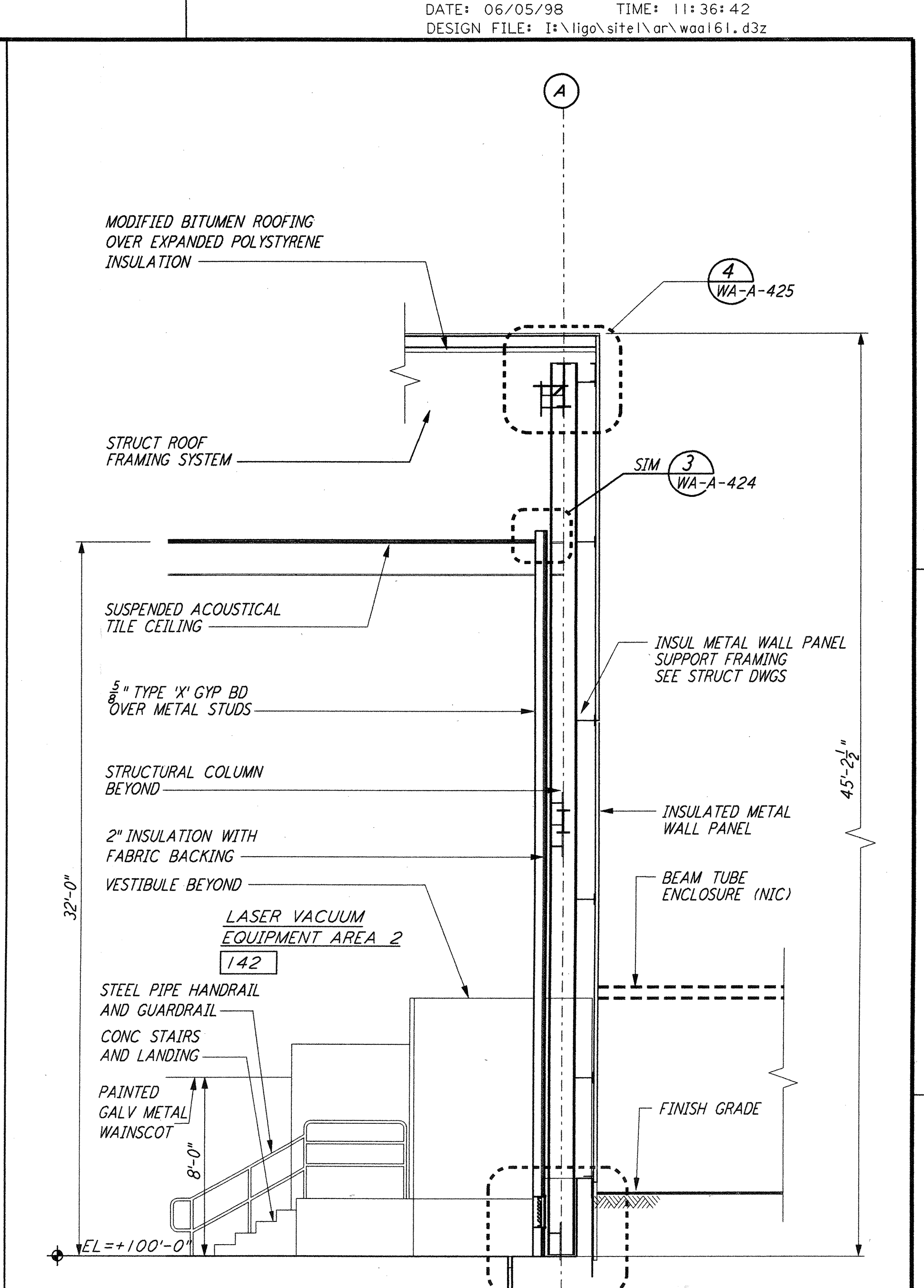
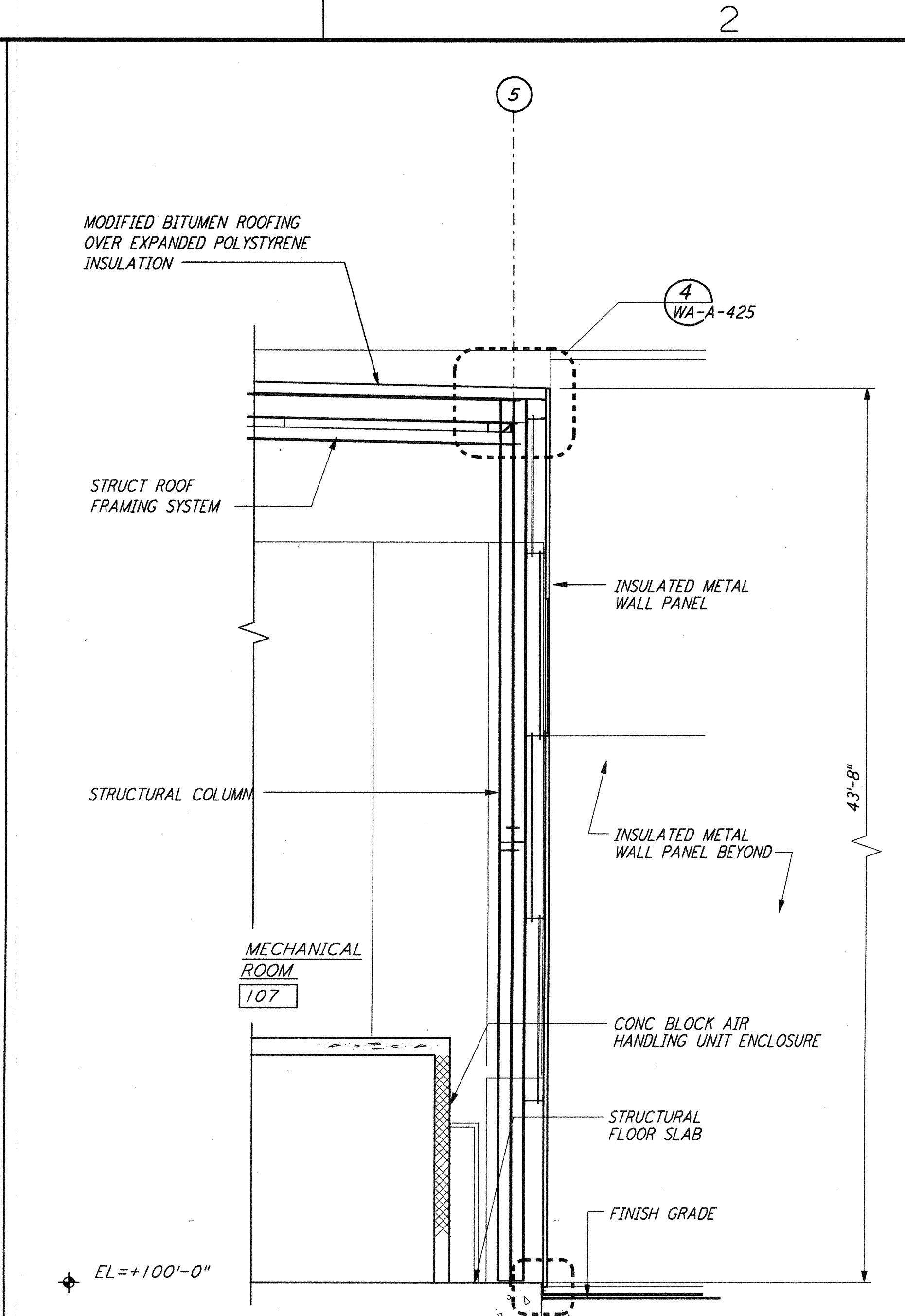
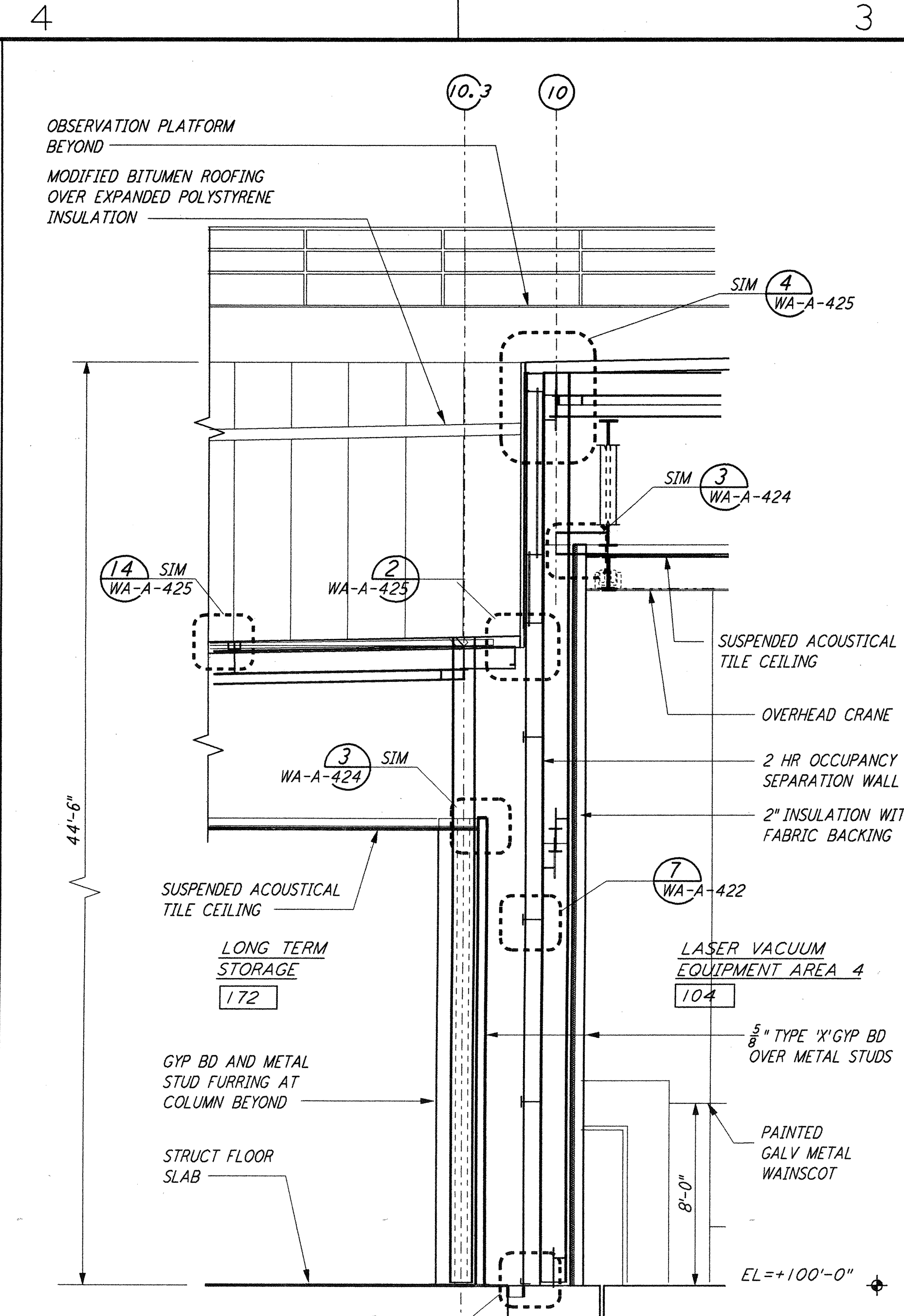
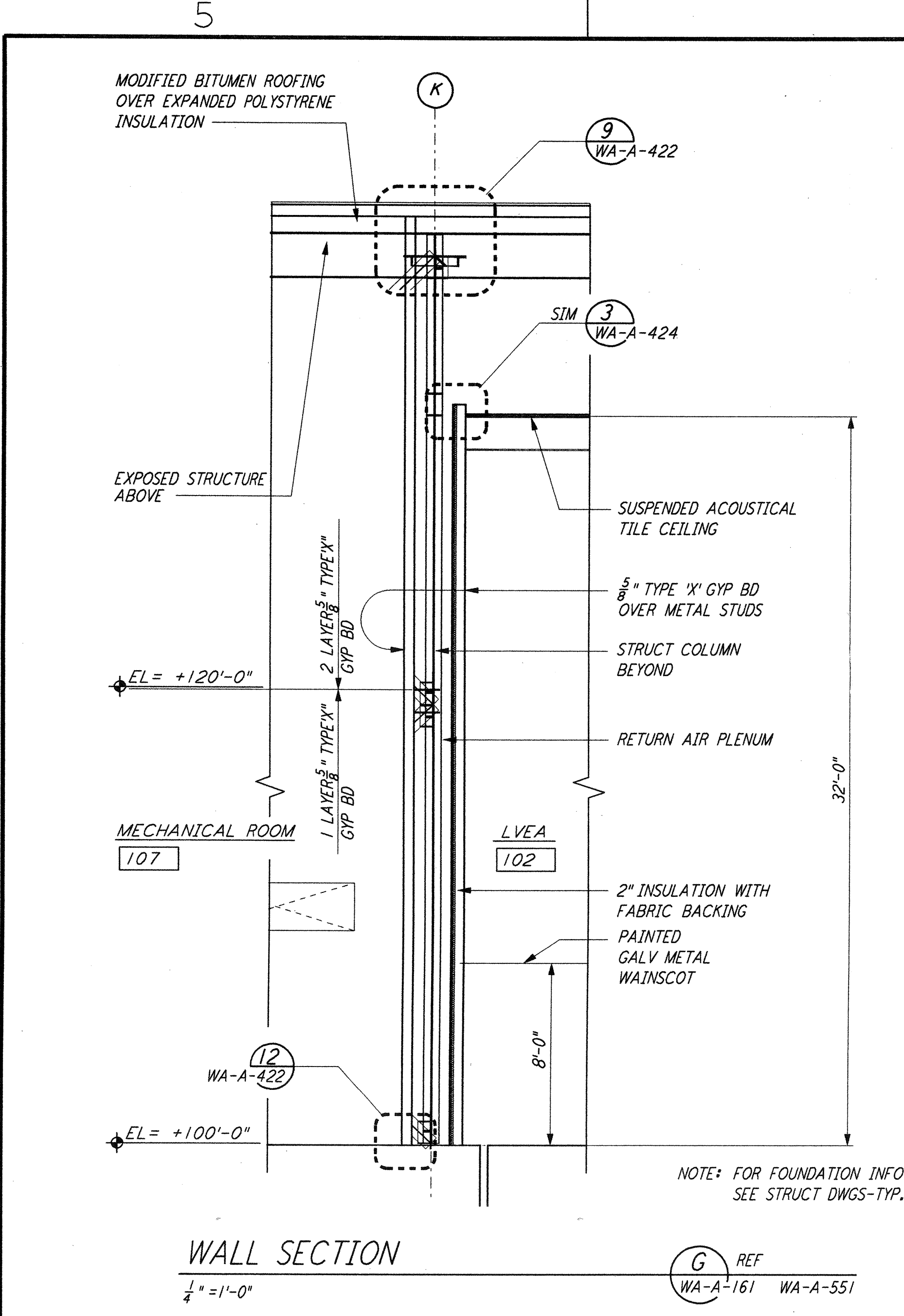


This document and the design it covers are the property of PARSONS. They are loaned only with the borrower's expressed written agreement that they will not be reproduced, copied, loaned, exhibited, or used in any other way, except by written consent from PARSONS to the borrower.



LIGO-D960256-02-0

NO.	DATE	BY	CHKD	ENGR	PROJ	DESCRIPTION
2	5-15-98	CKT	AK	MDW		ISSUED FOR AS-BUILT
1	2-28-97	CKT	TB	AK	TDM	CORNER STATION VSEA PARTITION

ISSUED FOR CONSTRUCTION	DATE
DRAWN	CKT 5-12-96
CHECKED	TB 5-26-96
ENGINEER	bkk 7-12-96
PROJ	MDW 7-12-96

AS-BUILT DRAWINGS

100 WEST WALNUT STREET
 PASADENA, CALIFORNIA

PARSONS

LIGO
 CALIFORNIA INSTITUTE OF TECHNOLOGY
 MASSACHUSETTS INSTITUTE OF TECHNOLOGY

LASER INTERFEROMETER GRAVITATIONAL-WAVE OBSERVATORY SITE NO. 1 - HANFORD, WASHINGTON			
TITLE	SCALE	CONTRACT NUMBER	PROJECT NUMBER
ARCHITECTURAL CORNER STATION WALL SECTIONS SHEET 1	AS NOTED	PP150969	8094
SHEET NUMBER		REVISIONS	
WA-A-161		2	

7- Jun 98 11:35:59 1998 C:\PLOT\JOB\53-V98B2\JCF 52085 K:\V98B2\A-161B.dwg LIGOWAF3.BDR