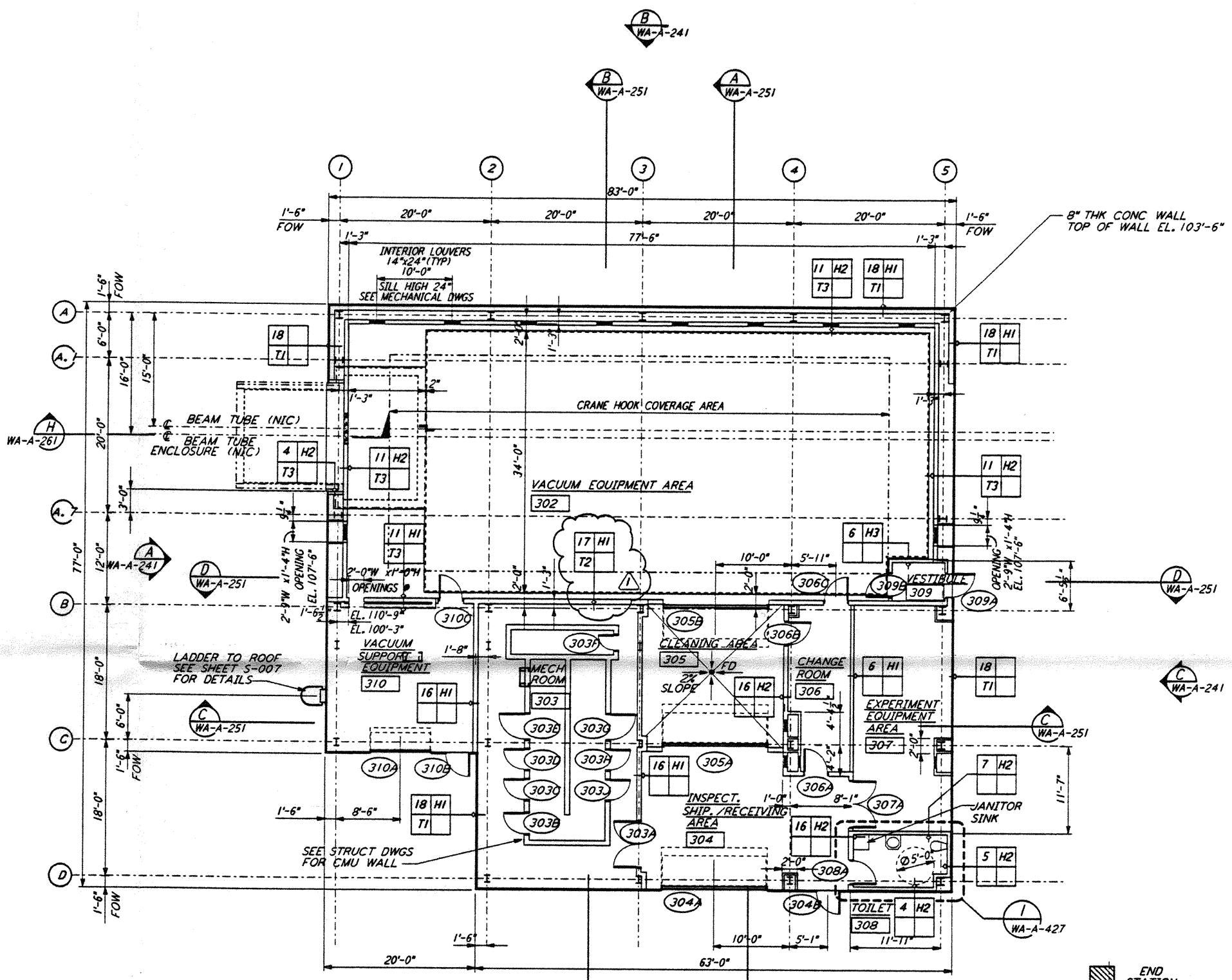
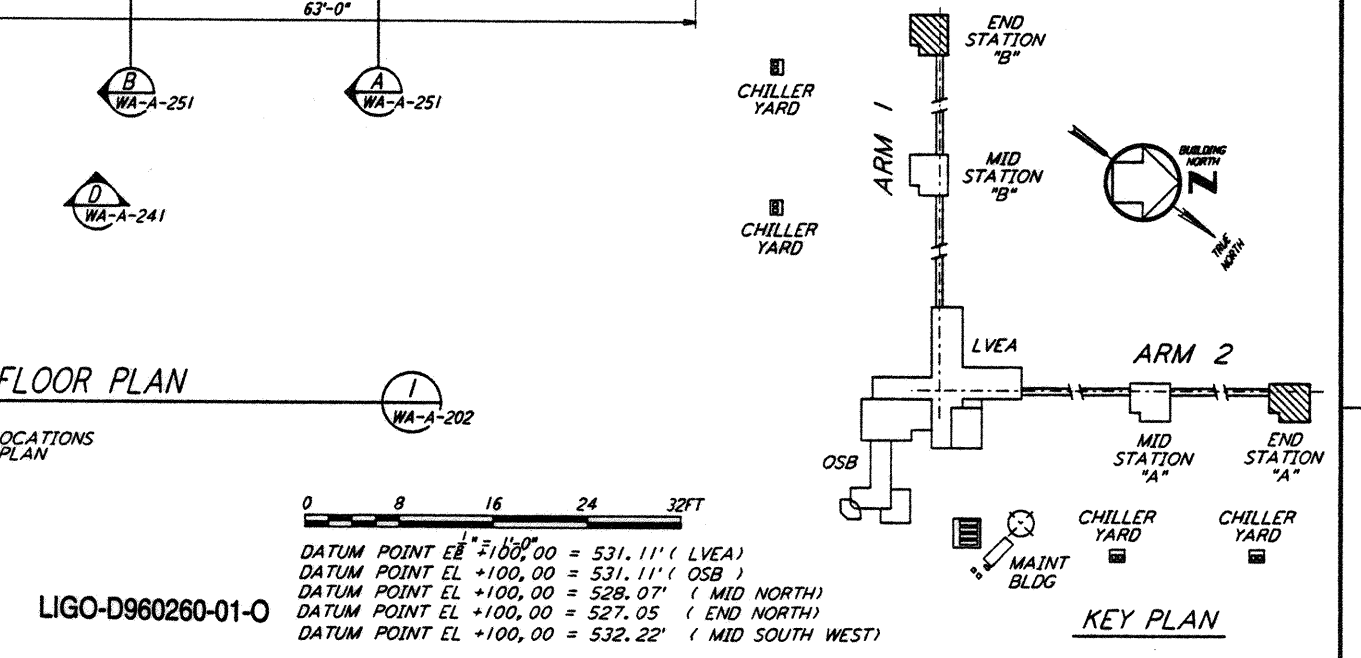


**END STATION "B" FLOOR PLAN**  
 1/8"=1'-0"  
 FOR LOUVER AND OPENING LOCATIONS  
 SEE MID STATION "A" FLOOR PLAN



**END STATION "A" FLOOR PLAN**  
 1/8"=1'-0"  
 FOR LOUVER AND OPENING LOCATIONS  
 SEE MID STATION "A" FLOOR PLAN



LIGO-D960260-01-0  
 DATUM POINT EL +2100.00 = 531.11' (LVEA)  
 DATUM POINT EL +100.00 = 531.11' (OSB)  
 DATUM POINT EL +100.00 = 528.07' (MID NORTH)  
 DATUM POINT EL +100.00 = 527.05' (END NORTH)  
 DATUM POINT EL +100.00 = 532.22' (MID SOUTH WEST)

**KEY PLAN**

This document and the design it covers are the property of PARSONS. They are loaned only with the borrower's expressed written agreement that they will not be reproduced, copied, loaned, exhibited, or used in any other way, except by written consent from PARSONS.

NO.	DATE	BY	CHKD	ENGR	PROJ	MID & END STATION PARTITION DESCRIPTION
1	2-28-97	CKT	TB	AK	TDM	MID & END STATION PARTITION

NO.	DATE	BY	CHKD	ENGR	PROJ	MID & END STATION PARTITION DESCRIPTION
1	2-28-97	CKT	TB	AK	TDM	MID & END STATION PARTITION

ISSUED FOR CONSTRUCTION  
 DRAWN CKT 5-12-96  
 CHECKED TB 5-26-96  
 ENGINEER DAK 7-12-96  
 PROJ MDW 7-12-96

**PARSONS**  
 100 WEST WALNUT STREET  
 PASADENA, CALIFORNIA

**LIGO**  
 CALIFORNIA INSTITUTE OF TECHNOLOGY  
 MASSACHUSETTS INSTITUTE OF TECHNOLOGY

LASER INTERFEROMETER  
 GRAVITATIONAL-WAVE OBSERVATORY  
 SITE NO. 1 - HANFORD, WASHINGTON

ARCHITECTURAL  
 END STATIONS  
 FLOOR PLANS

AS NOTED PPI50969 8094  
**WA-A-202**