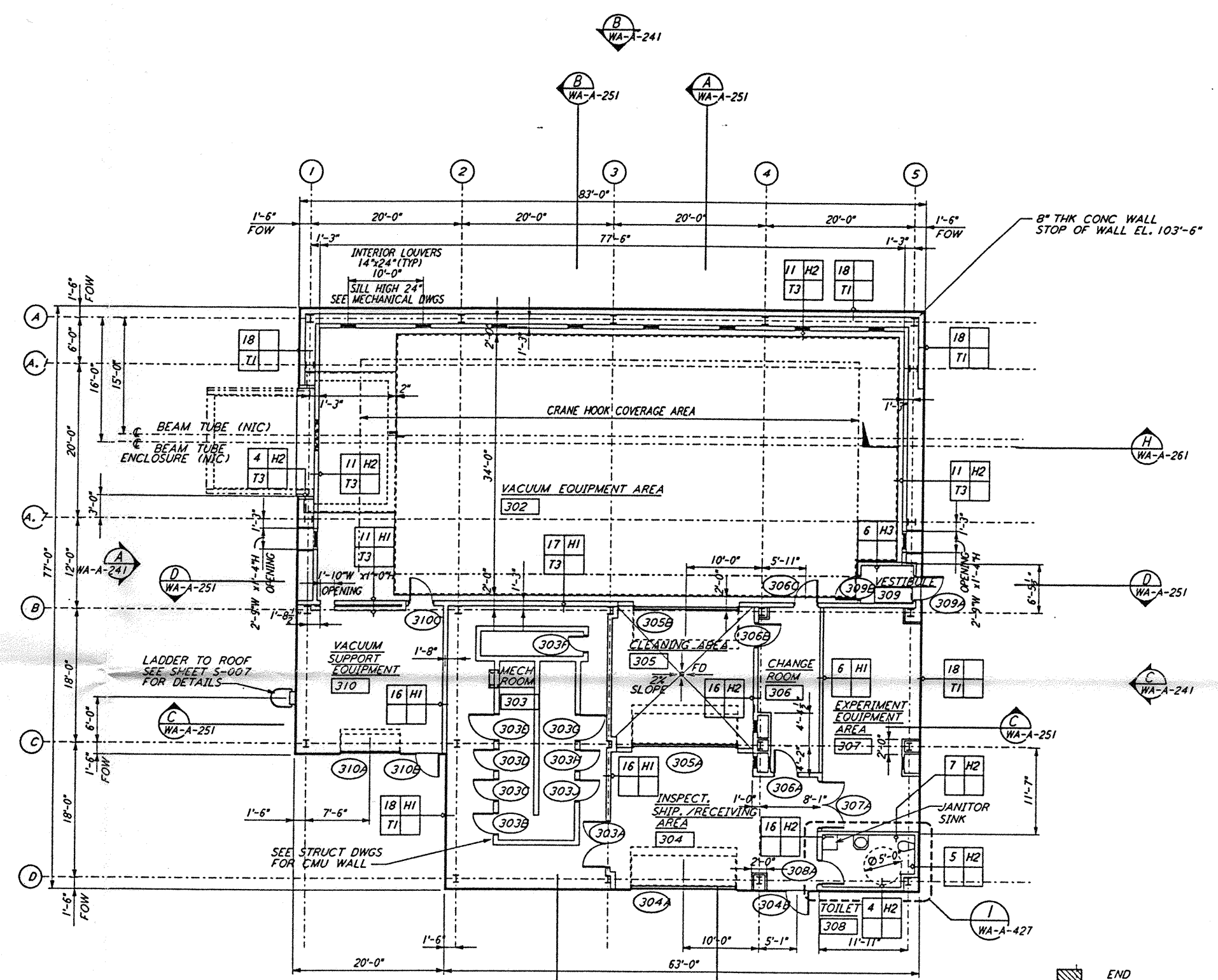
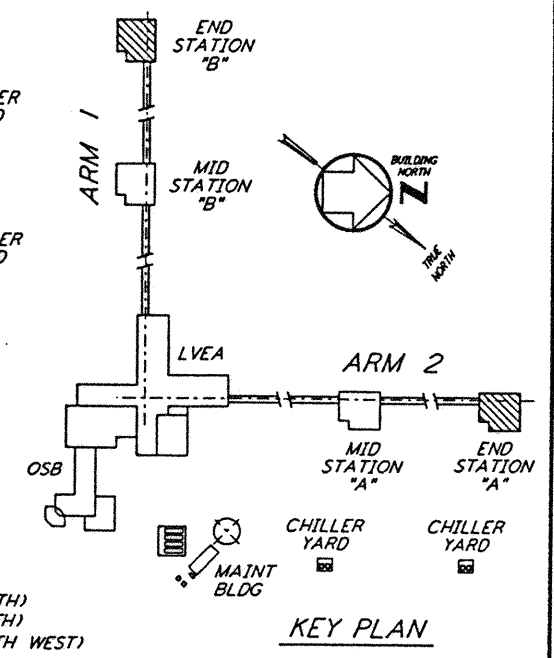


END STATION "B" FLOOR PLAN
 1/4"=1'-0"
 FOR LOUVER AND OPENING LOCATIONS
 SEE MID STATION "A" FLOOR PLAN



END STATION "A" FLOOR PLAN
 1/4"=1'-0"
 FOR LOUVER AND OPENING LOCATIONS
 SEE MID STATION "A" FLOOR PLAN



0 8 16 24 32 FT
 DATUM POINT EL +3,100.00 = 531.11' (LVEA)
 DATUM POINT EL +100.00 = 531.11' (OSB)
 DATUM POINT EL +100.00 = 528.07' (MID NORTH)
 DATUM POINT EL +100.00 = 527.05' (END NORTH)
 DATUM POINT EL +100.00 = 532.22' (MID SOUTH WEST)

KEY PLAN

not be reproduced, copied, loaned, exhibited, or used in any other way, except by written consent from PARSONS to the borrower.

This document and the design it covers are the property of PARSONS. They are loaned only with the borrower's expressed written agreement that they will

NO.	DATE	BY	CHKD	ENGR	PROJ	DESCRIPTION
B	4-19-96	SF	SF	PKM		FINAL DESIGN REVIEW & BID
A	01/17/96	SF	SF	TOM		PRELIMINARY DESIGN REVIEW

DRAWN	CKT
CHECKED	
ENGINEER	
PROJ	

PARSONS
 100 WEST WALNUT STREET
 PASADENA, CALIFORNIA

LIGO
 CALIFORNIA INSTITUTE OF TECHNOLOGY
 MASSACHUSETTS INSTITUTE OF TECHNOLOGY

LASER INTERFEROMETER
 GRAVITATIONAL-WAVE OBSERVATORY
 SITE NO. 1 - HANFORD, WASHINGTON

ARCHITECTURAL
 END STATIONS
 FLOOR PLANS

AS NOTED PPI 50969 8094
WA-A-202

LIGB-D960260-B-E

100 WEST WALNUT STREET PASADENA, CALIFORNIA 92302