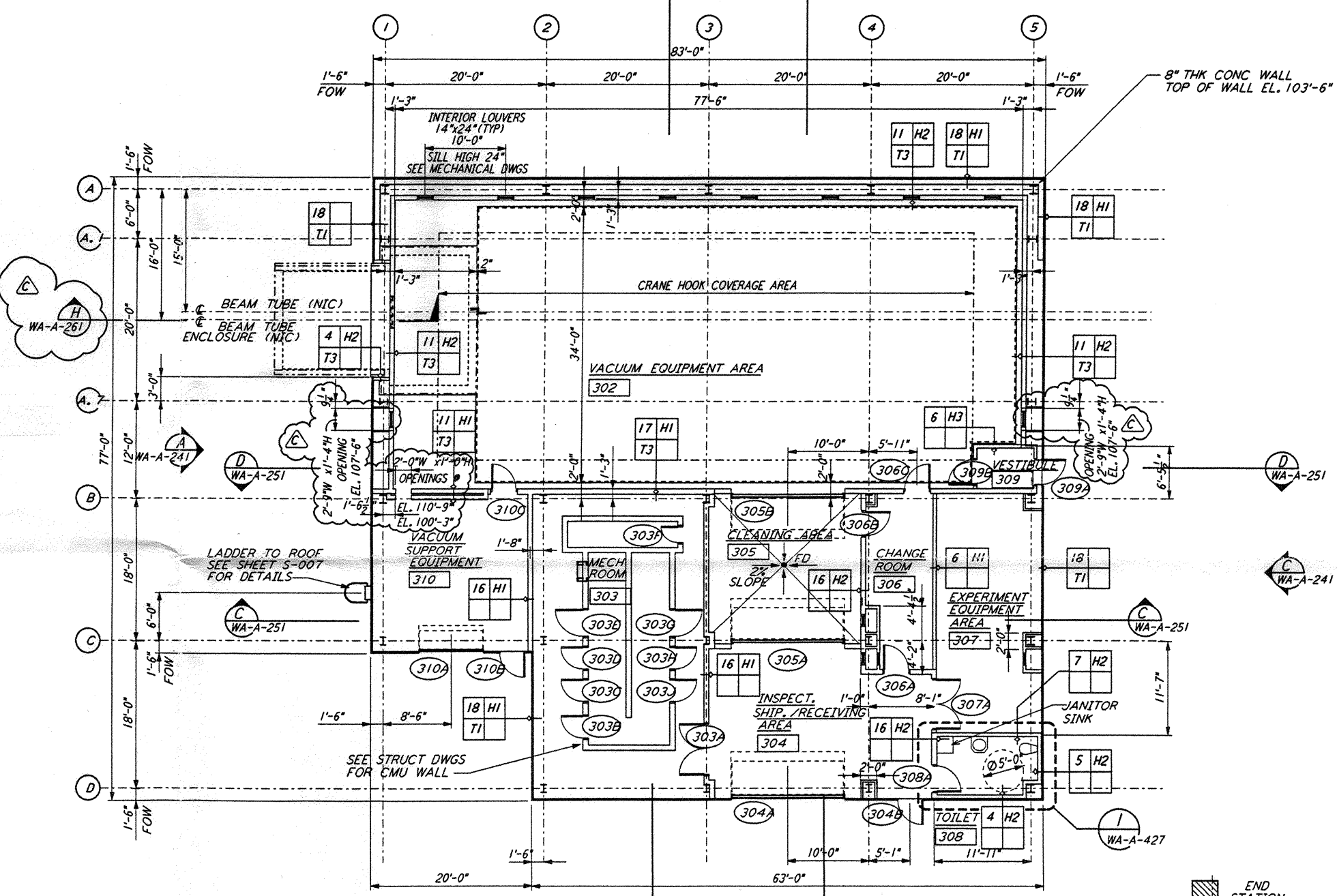
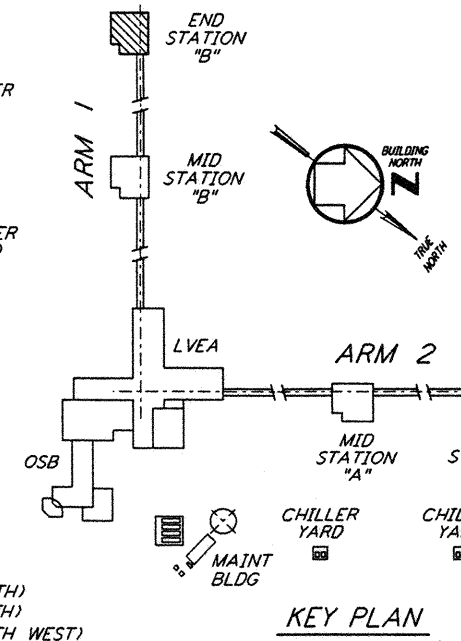


END STATION "B" FLOOR PLAN
 1/4"=1'-0"
 FOR LOUVER AND OPENING LOCATIONS
 SEE MID STATION "A" FLOOR PLAN



END STATION "A" FLOOR PLAN
 1/4"=1'-0"
 FOR LOUVER AND OPENING LOCATIONS
 SEE MID STATION "A" FLOOR PLAN

0 8 16 24 32 FT
 1"=110'
 DATUM POINT EL +100.00 = 531.11' (LVEA)
 DATUM POINT EL +100.00 = 531.11' (OSB)
 DATUM POINT EL +100.00 = 528.07' (MID NORTH)
 DATUM POINT EL +100.00 = 527.05' (END NORTH)
 DATUM POINT EL +100.00 = 532.22' (MID SOUTH WEST)



KEY PLAN

LIGO-D960280-C-0

This document and the design it covers are the property of PARSONS. They are loaned only with the borrower's expressed written agreement that they will not be reproduced, copied, loaned, exhibited, or used in any other way, except by written consent from PARSONS to the borrower.

NO.	DATE	BY	CHKD	ENGR	PROJ	DESCRIPTION
C	5-22-96	BK	BK	SF	TDM	BID ADDENDUM #2
B	4-19-96	SF	SF	TDM		FINAL DESIGN REVIEW & BID
A	01/17/96	SF	SF	TDM		PRELIMINARY DESIGN REVIEW

DRAWN	CKT
CHECKED	
ENGINEER	
PROJ	

PARSONS
 100 WEST WALNUT STREET
 PASADENA, CALIFORNIA

LIGO
 CALIFORNIA INSTITUTE OF TECHNOLOGY
 MASSACHUSETTS INSTITUTE OF TECHNOLOGY

LASER INTERFEROMETER
 GRAVITATIONAL-WAVE OBSERVATORY
 SITE NO. 1 - HANFORD, WASHINGTON

ARCHITECTURAL
 END STATIONS
 FLOOR PLANS

AS NOTED PP150969 8094
WA-A-202