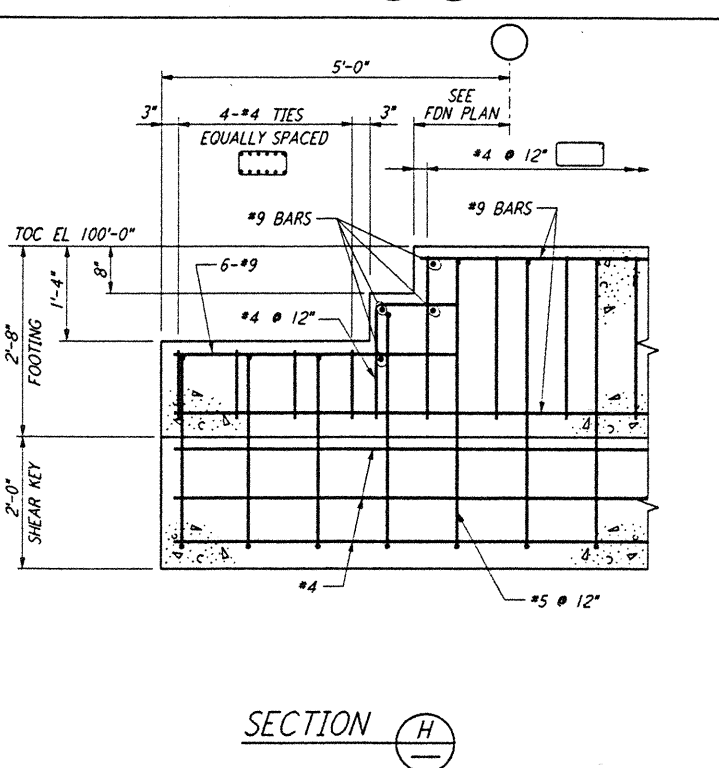
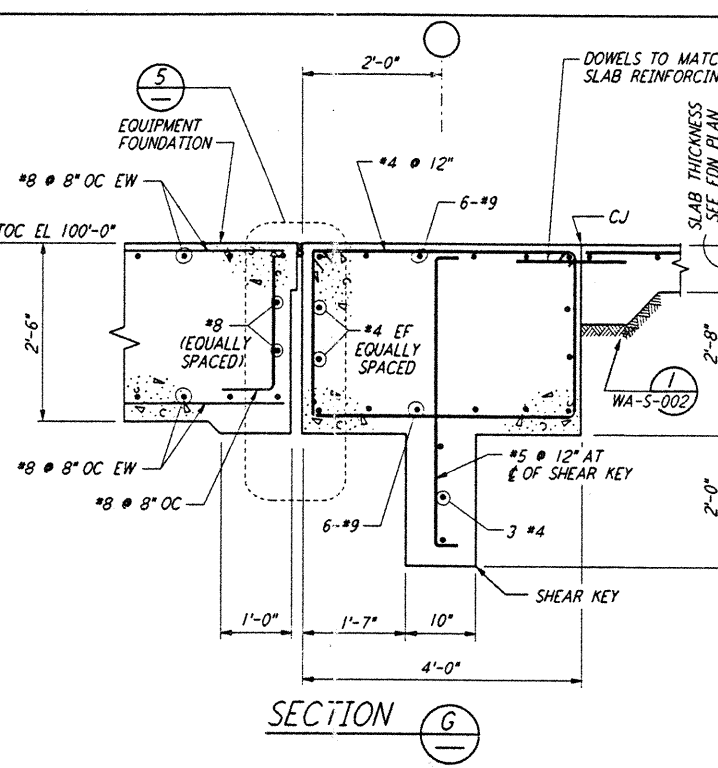
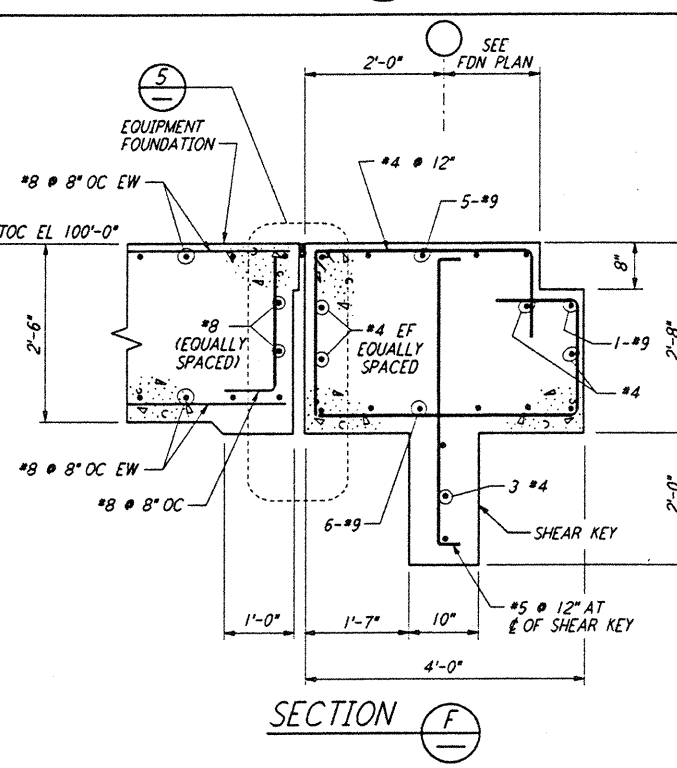
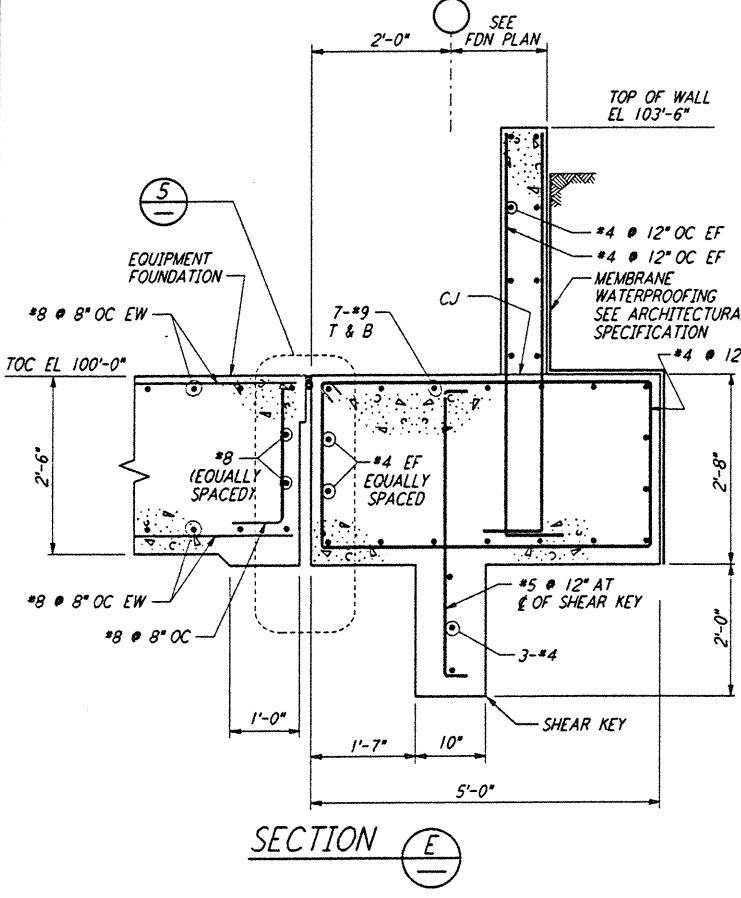
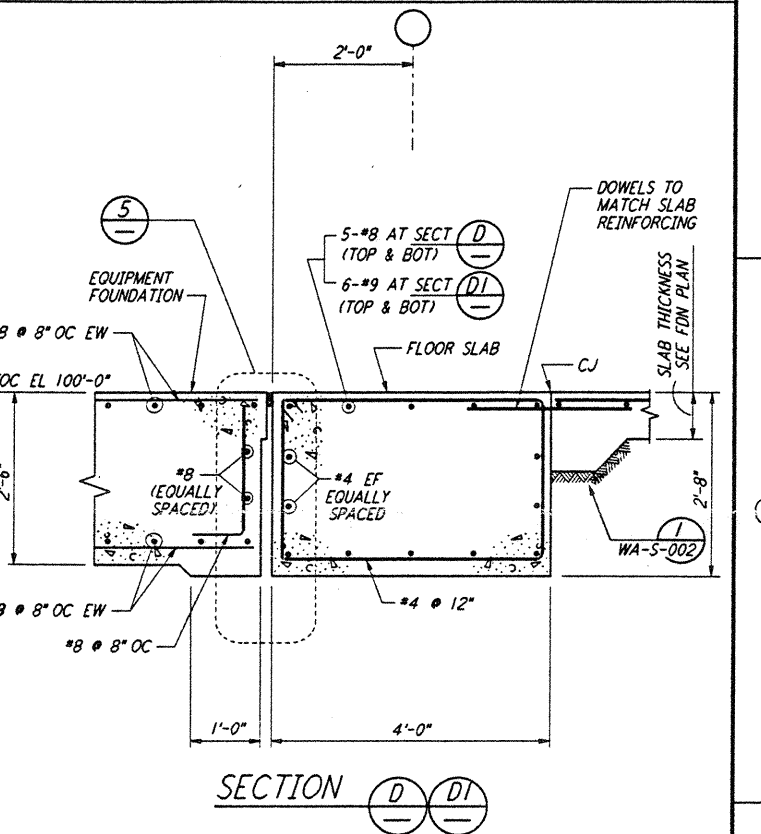
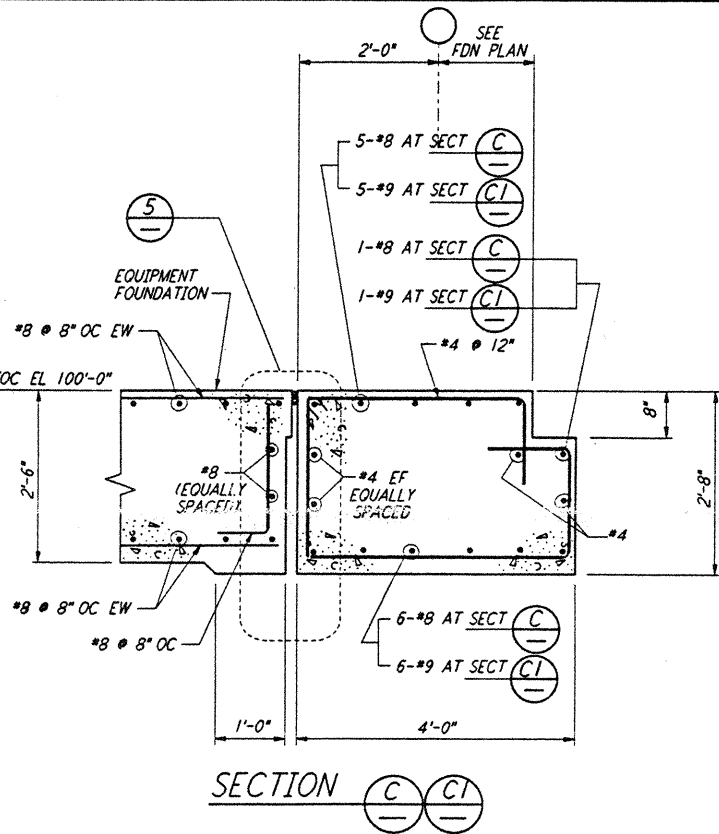
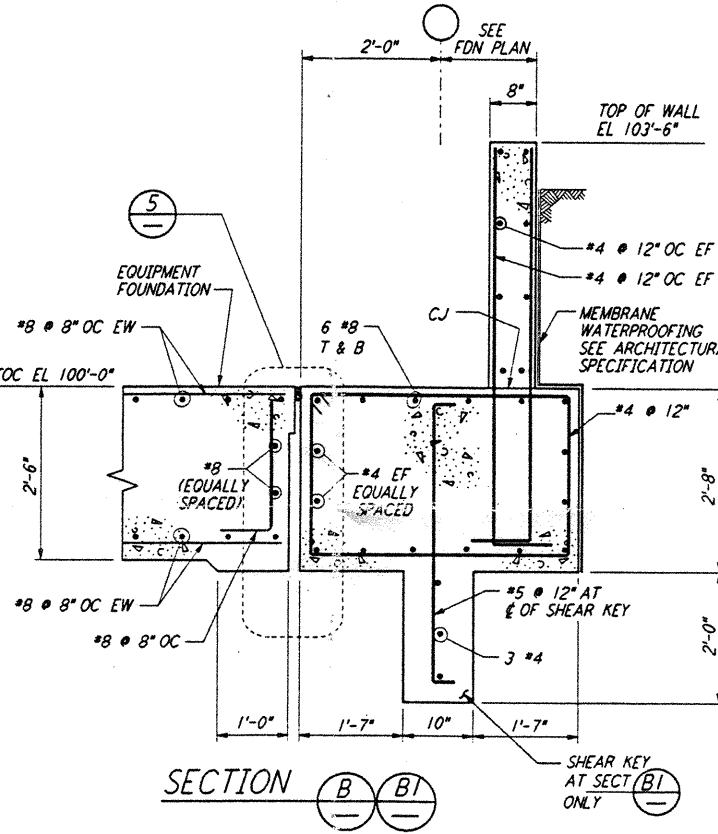
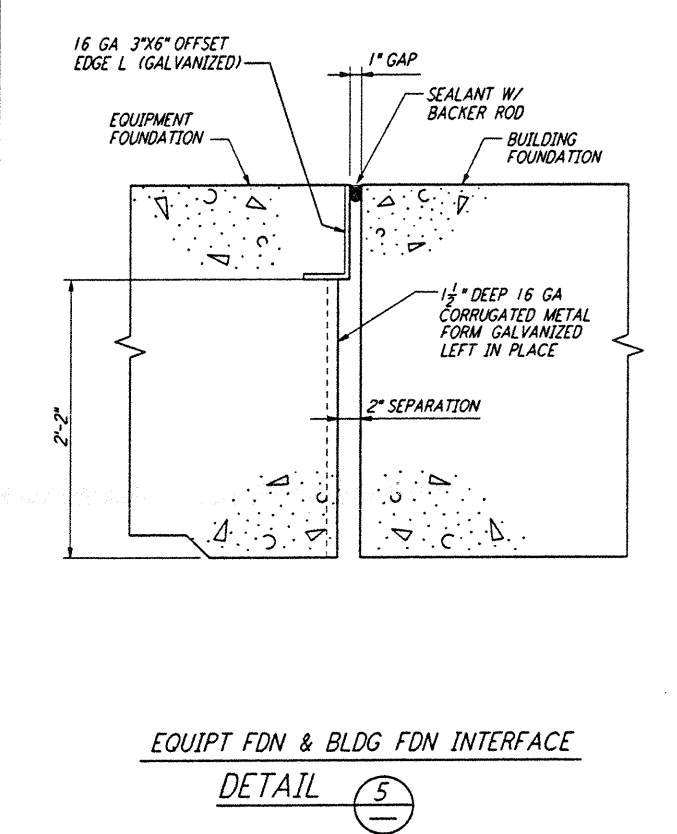
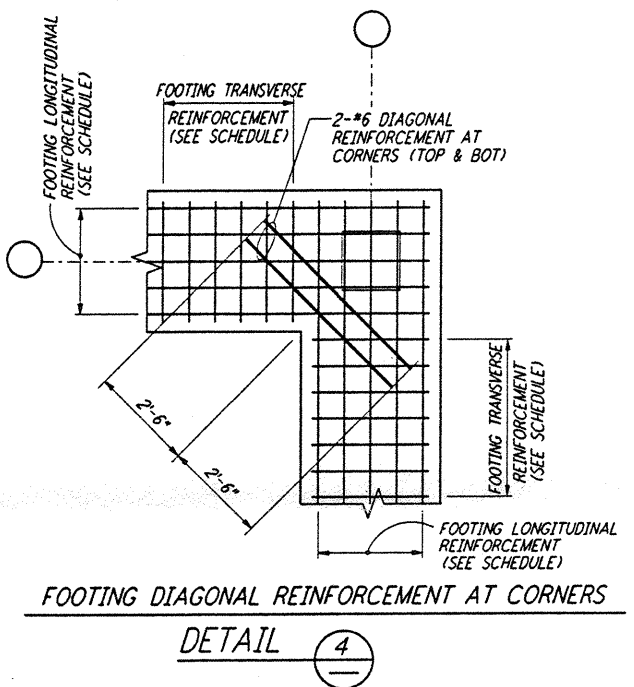
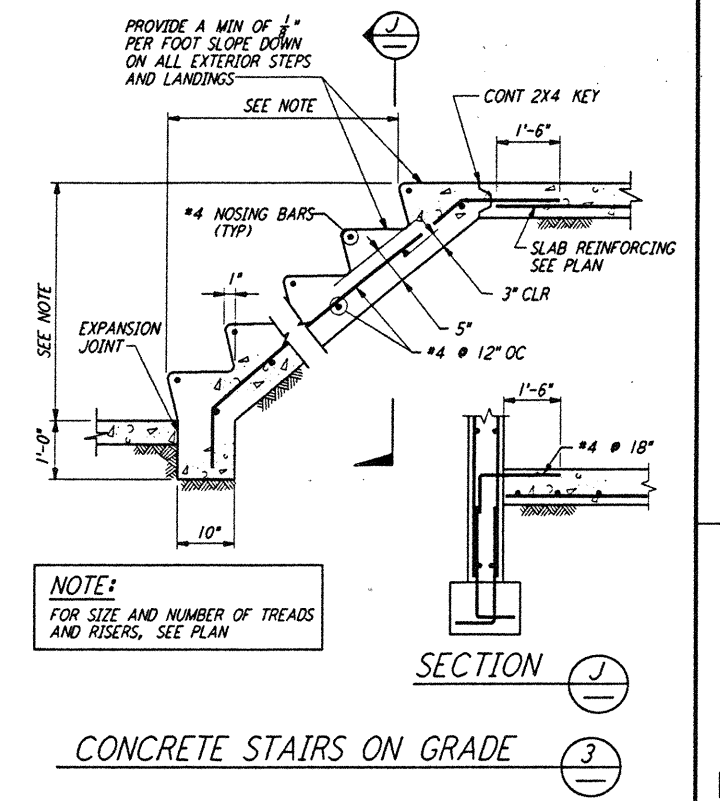
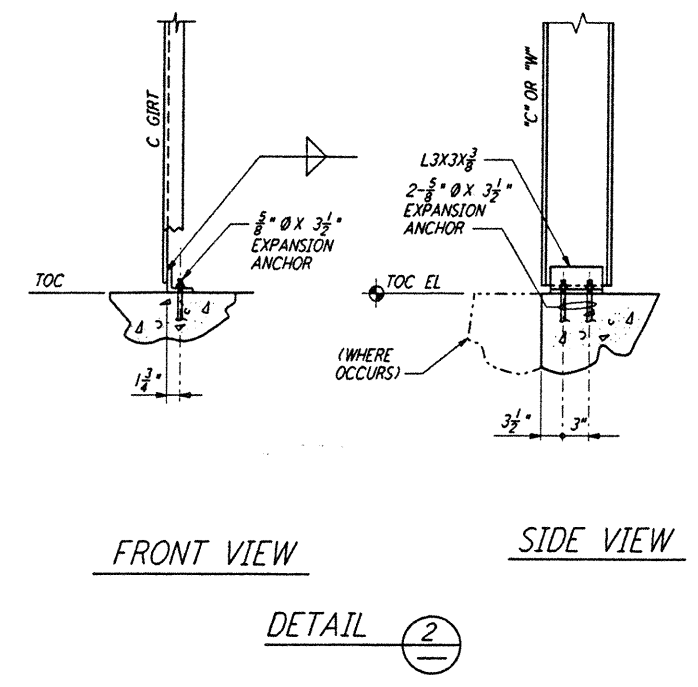
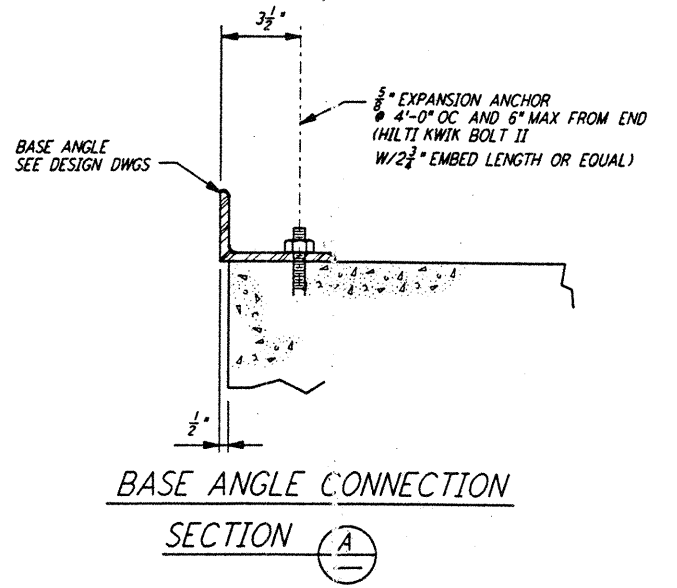
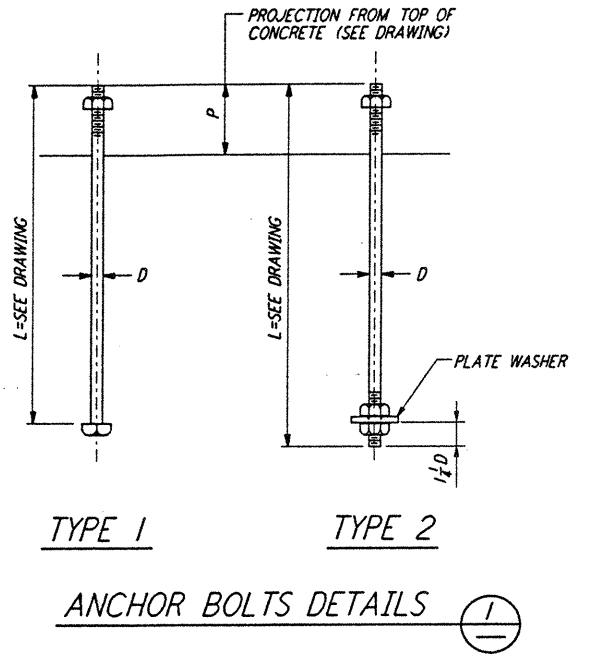


NOTES:

1. BOLT MATERIAL SHALL BE IN ACCORDANCE WITH ASTM A307, UNLESS OTHERWISE SPECIFIED.
2. USE UNIFIED NATIONAL COARSE THREAD, CLASS 2 FIT.
3. USE HEAVY DOUBLE CHAMFER HEX NUTS UP TO 1", AND HEAVY FLAT FACE HEX NUTS LARGER THAN 1".
4. PROVIDE 1 HEX NUT FOR EACH BOLT, UNLESS OTHERWISE NOTED ON DESIGN DRAWINGS.
5. PLATE WASHER MATERIAL SHALL BE ASTM A36, UNLESS OTHERWISE NOTED.
6. FABRICATOR SHALL BUNDLE AND TAG BOLTS BY INDIVIDUAL FOUNDATIONS OR MEMBERS. TAGS SHALL BE WEATHER RESISTANT, WITH MARKS AT LEAST 1/2" HIGH, AND FIRMLY WIRED TO BUNDLES.
7. SLEEVES SHALL NOT BE USED UNLESS SPECIFIED ON THE DESIGN DRAWINGS.

| ANCHOR BOLT SCHEDULE | | | | | |
|----------------------|------------------------|----------------|--------|---------------|--------|
| DIA D | PLATE WASHER | SLEEVE IF REQD | | THREAD LENGTH | DIA D |
| | | DIA | LENGTH | | |
| 1/2" | | 2" | 5" | 1 1/2" | 1/2" |
| 3/8" | | 2" | 5" | 2 1/2" | 3/8" |
| 1/2" | | 2" | 7" | 2 1/2" | 1/2" |
| 3/8" | | 2" | 7" | 2 1/2" | 3/8" |
| 1" | 2 1/2" X 2 1/2" X 3/8" | 3" | 10" | 3 1/2" | 1" |
| 1 1/2" | 3" X 3" X 1/2" | 3" | 10" | 3 1/2" | 1 1/2" |
| 1 1/2" | 3 1/2" X 3 1/2" X 1/2" | 3" | 10" | 4" | 1 1/2" |
| 1 1/2" | 3 1/2" X 3 1/2" X 1/2" | 4" | 15" | 4 1/2" | 1 1/2" |
| 1 1/2" | 3 1/2" X 3 1/2" X 1/2" | 4" | 15" | 4 1/2" | 1 1/2" |

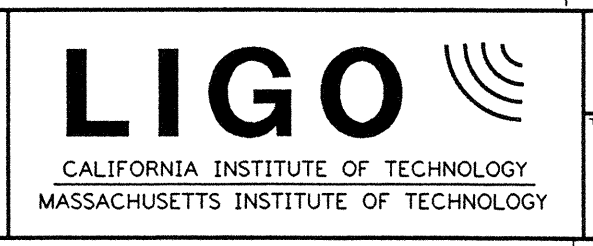
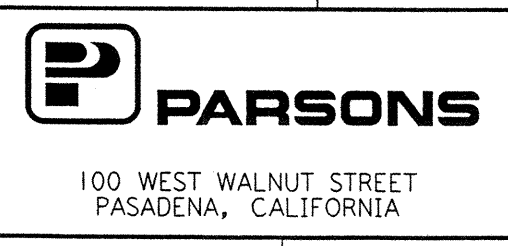
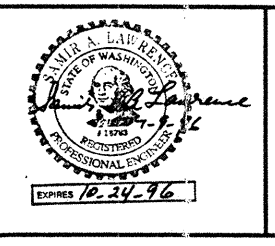


NOTES:
 1. FOR GENERAL NOTES, ABBREVIATIONS AND SYMBOLS, SEE DRAWING S-001

This document and the design it covers are the property of PARSONS. They are loaned only with the borrower's expressed written agreement that they will not be reproduced, copied, loaned, exhibited, or used in any other way, except by written consent from PARSONS to the borrower.

| NO. | DATE | BY | CHKD | ENGR | PROJ | DESCRIPTION |
|-----|------|----|------|------|------|-------------|
| | | | | | | |
| | | | | | | |

ISSUED FOR CONSTRUCTION
 DRAWN: MCS 6-24-96
 CHECKED: [Signature] 7-2-96
 ENGINEER: [Signature] 6-28-96
 PROJ: [Signature] 7/9/96



LASER INTERFEROMETER
 GRAVITATIONAL-WAVE OBSERVATORY
 SITE NO. 1 - HANFORD, WASHINGTON

| | | | |
|--------------------------|-------|-----------------|----------------|
| TITLE | SCALE | CONTRACT NUMBER | PROJECT NUMBER |
| STRUCTURAL STANDARD | NONE | PP150969 | 8094 |
| CONCRETE DETAILS SHEET 2 | | WA-S-003 | |