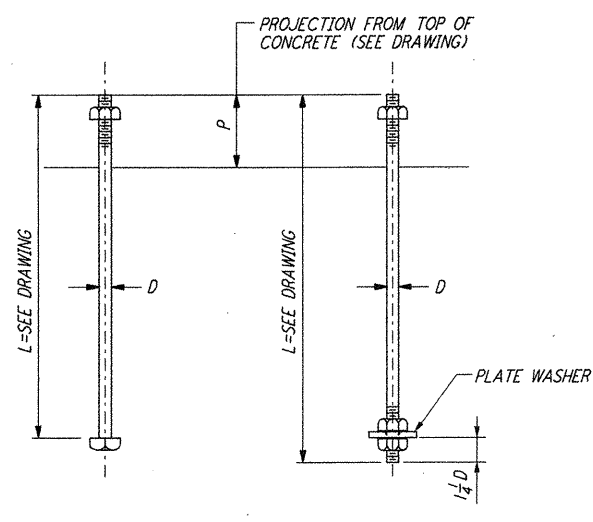


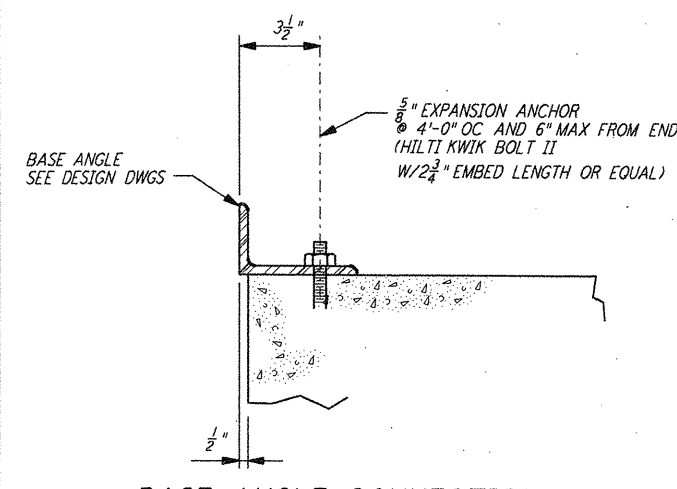
NOTES:

1. BOLT MATERIAL SHALL BE IN ACCORDANCE WITH ASTM A307, UNLESS OTHERWISE SPECIFIED.
2. USE UNIFIED NATIONAL COARSE THREAD, CLASS 2 FIT.
3. USE HEAVY DOUBLE CHAMFER HEX NUTS UP TO 1", AND HEAVY FLAT FACE HEX NUTS LARGER THAN 1".
4. PROVIDE 1 HEX NUT FOR EACH BOLT, UNLESS OTHERWISE NOTED ON DESIGN DRAWINGS.
5. PLATE WASHER MATERIAL SHALL BE ASTM A36, UNLESS OTHERWISE NOTED.
6. FABRICATOR SHALL BUNDLE AND TAG BOLTS BY INDIVIDUAL FOUNDATIONS OR MEMBERS. TAGS SHALL BE WEATHER RESISTANT, WITH MARKS AT LEAST 1/2" HIGH, AND FIRMLY WIRED TO BUNDLES.
7. SLEEVES SHALL NOT BE USED UNLESS SPECIFIED ON THE DESIGN DRAWINGS.

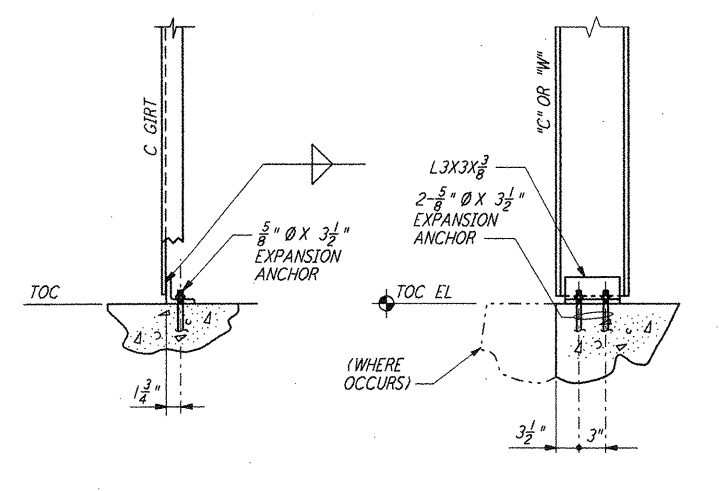


TYPE 1 TYPE 2
ANCHOR BOLTS DETAILS

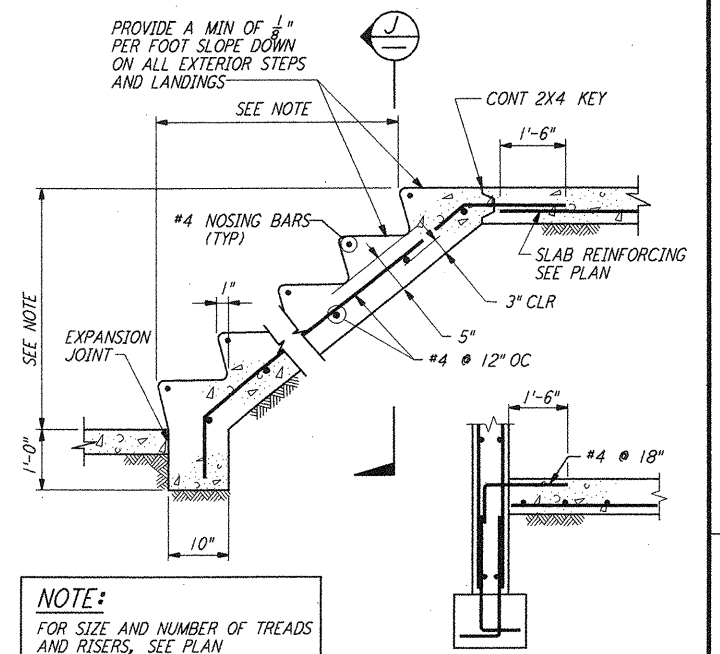
DIA D	PLATE WASHER	SLEEVE IF REQD		THREAD LENGTH	DIA D
		DIA	LENGTH		
1/2"		2"	5"	1 3/4"	1/2"
3/8"		2"	5"	2 1/8"	3/8"
1/2"		2"	7"	2 1/2"	1/2"
3/4"		2"	7"	2 7/8"	3/4"
1"	2 1/2" X 2 1/2" X 3/8"	3"	10"	3 1/2"	1"
1 1/8"	3" X 3" X 1/2"	3"	10"	3 5/8"	1 1/8"
1 1/4"	3 1/2" X 3 1/2" X 1/2"	3"	10"	4"	1 1/4"
1 1/2"	3 3/4" X 3 3/4" X 1/2"	4"	15"	4 3/8"	1 1/2"
1 3/4"	3 3/4" X 3 3/4" X 1/2"	4"	15"	4 3/4"	1 3/4"



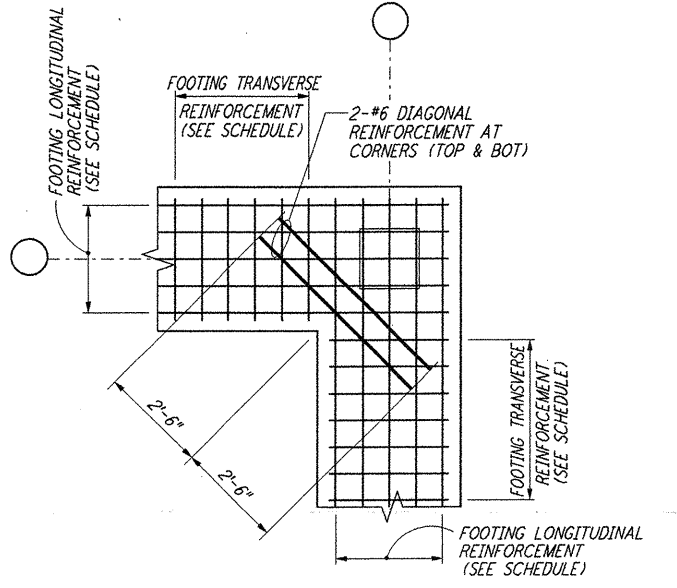
BASE ANGLE CONNECTION
SECTION A



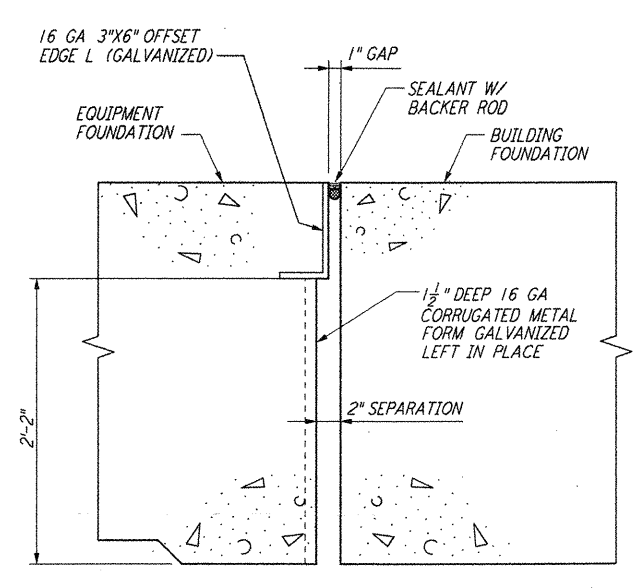
FRONT VIEW SIDE VIEW
DETAIL 2



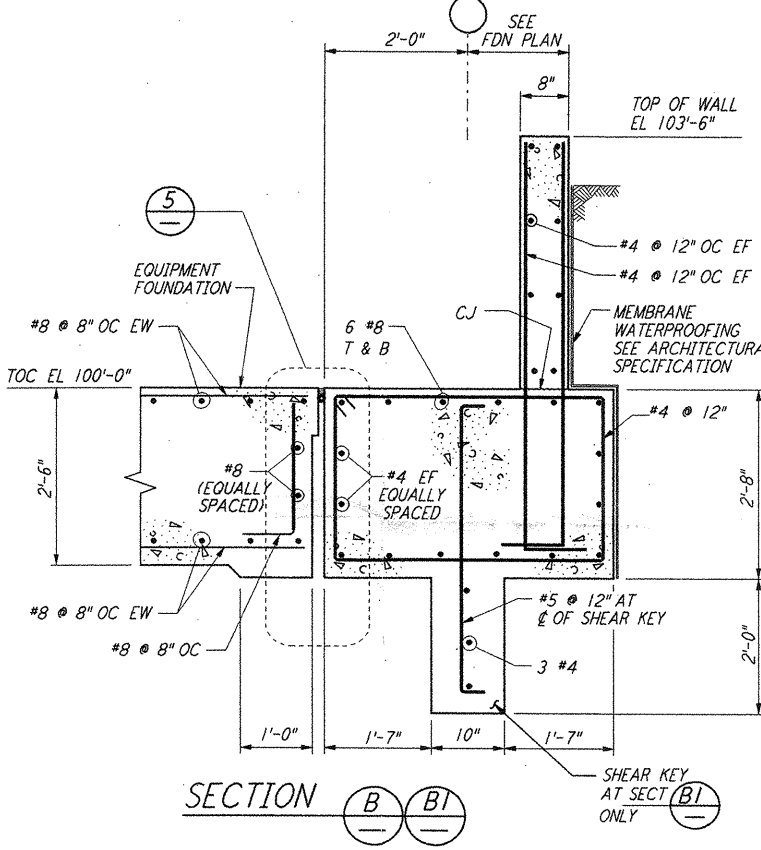
CONCRETE STAIRS ON GRADE
SECTION J



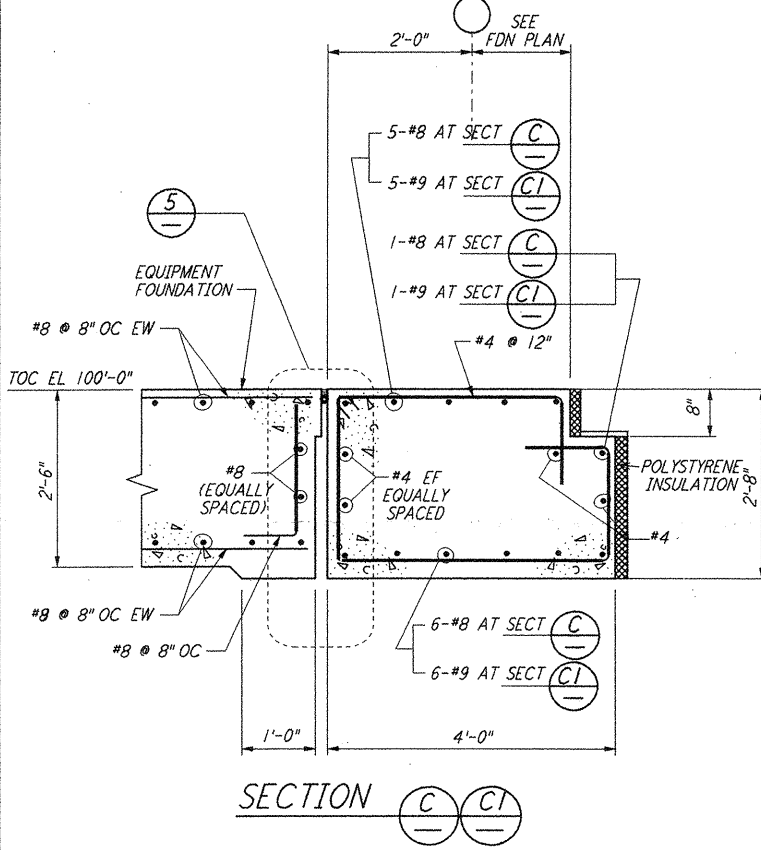
FOOTING DIAGONAL REINFORCEMENT AT CORNERS
DETAIL 4



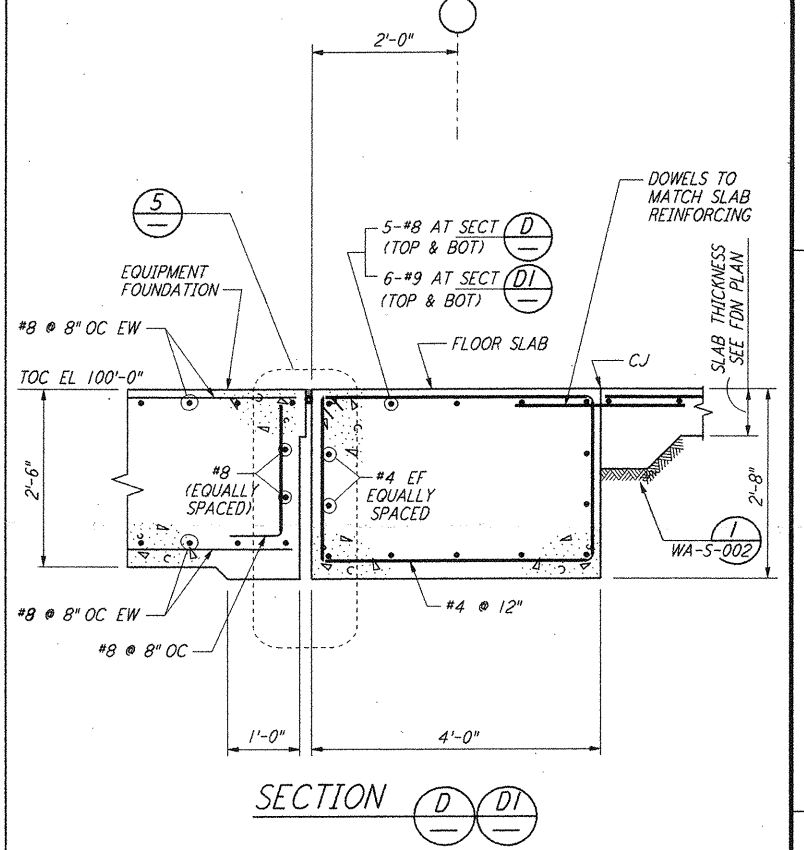
EQUIPT FDN & BLDG FDN INTERFACE
DETAIL 5



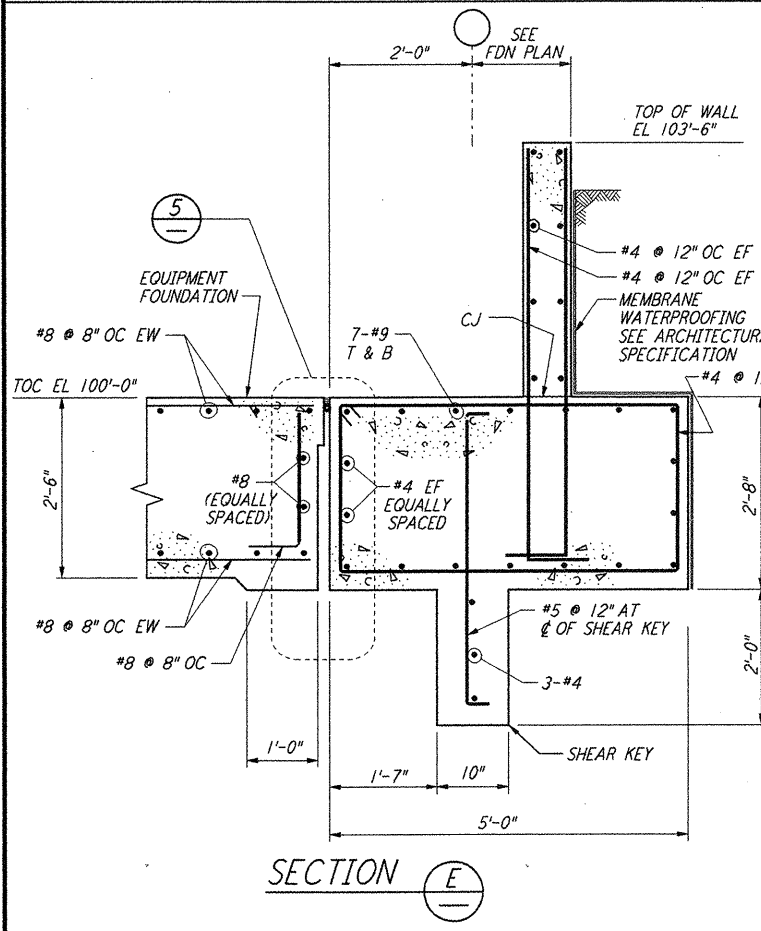
SECTION B B1



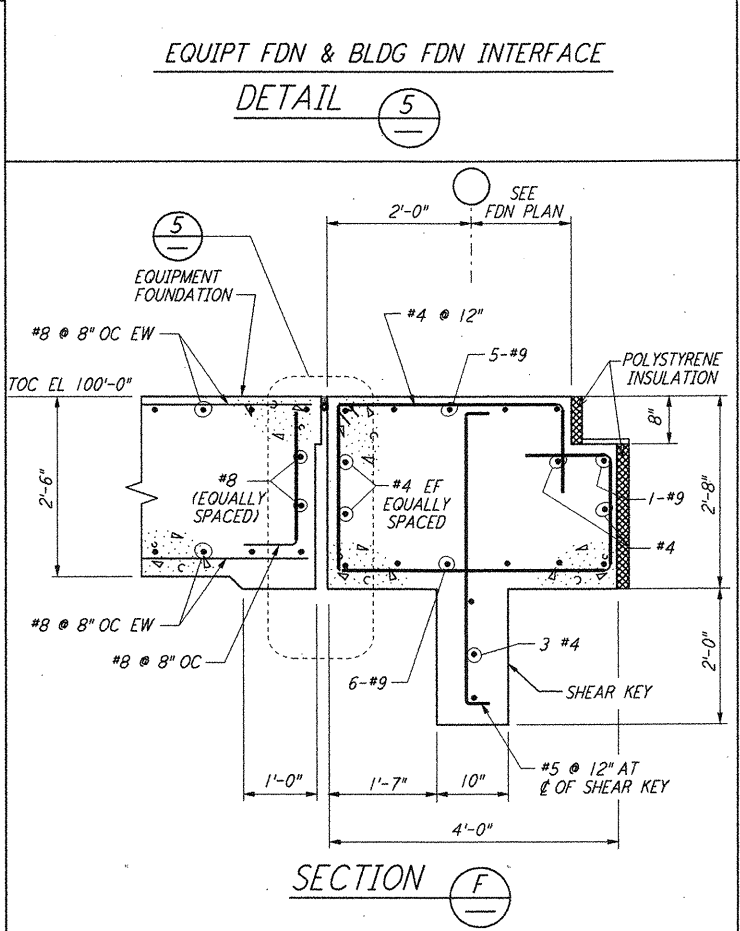
SECTION C C1



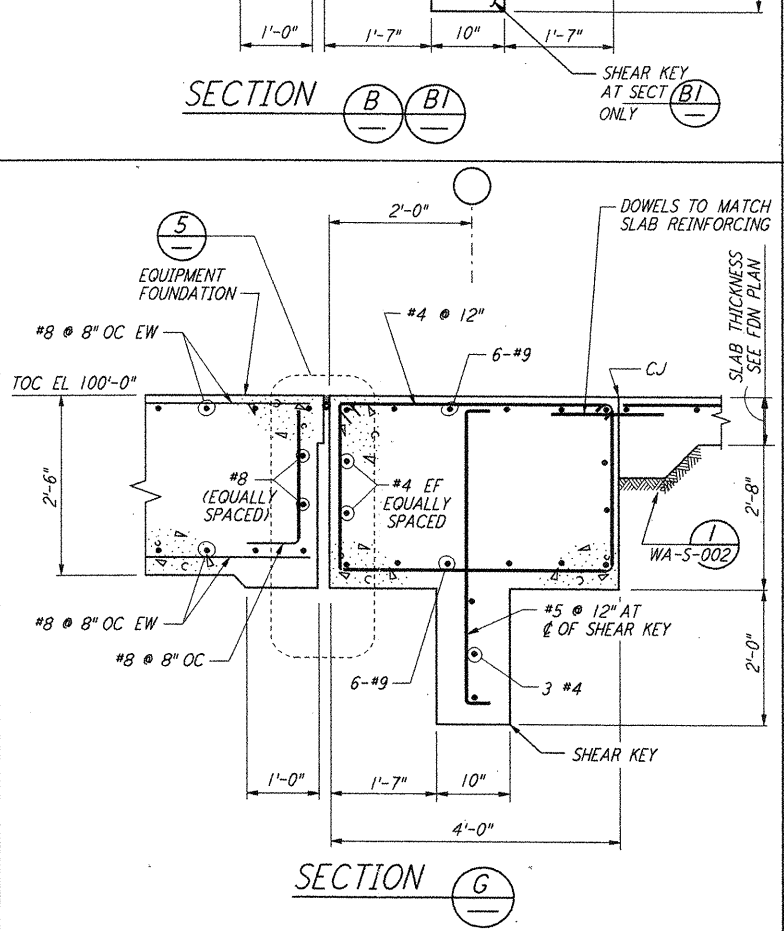
SECTION D D1



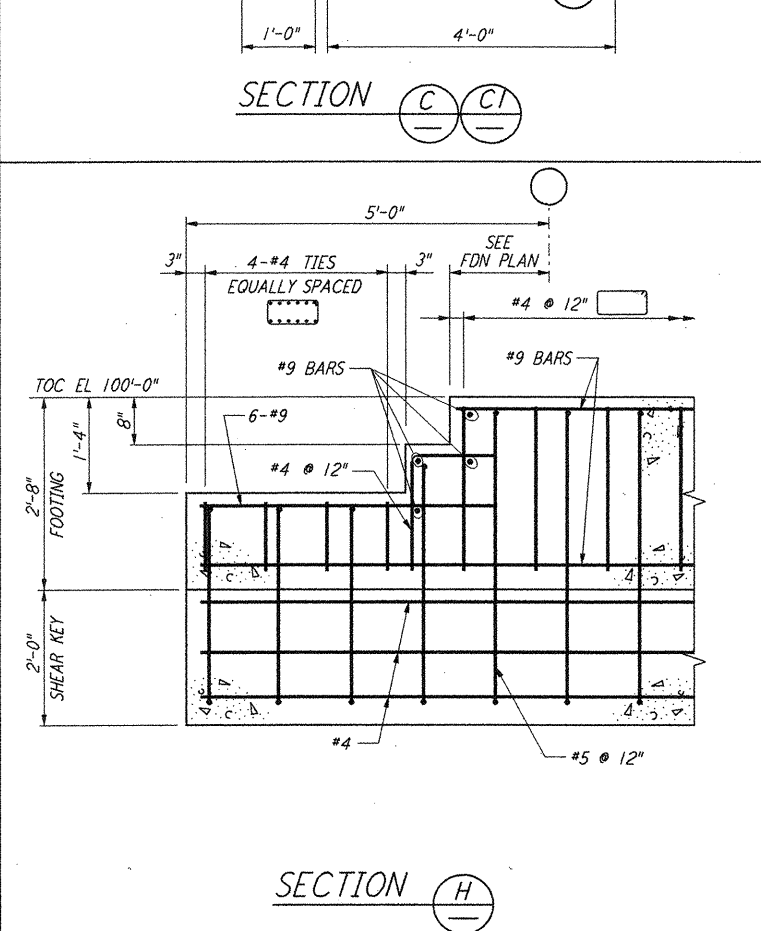
SECTION E



SECTION F



SECTION G



SECTION H

- NOTES:**
1. FOR GENERAL NOTES, ABBREVIATIONS AND SYMBOLS, SEE DRAWING S-001

NO.	DATE	BY	CHKD	ENGR	PROJ	DESCRIPTION
1	6-15-98	CKT	BP	BP	MDW	ISSUED FOR AS-BUILT

ISSUED FOR CONSTRUCTION
DRAWN MCS 6-24-98
CHECKED DOM 7-2-98
ENGINEER BP 6-28-98
PROJ MDW 7-9-98

AS-BUILT DRAWINGS

PARSONS
100 WEST WALNUT STREET
PASADENA, CALIFORNIA

LIGO
CALIFORNIA INSTITUTE OF TECHNOLOGY
MASSACHUSETTS INSTITUTE OF TECHNOLOGY

LIGO-D960288-01-0

LASER INTERFEROMETER
GRAVITATIONAL-WAVE OBSERVATORY
SITE NO. 1 - HANFORD, WASHINGTON

STRUCTURAL STANDARD
CONCRETE DETAILS SHEET 2

SCALE: NONE
CONTRACT NUMBER: PP150969
PROJECT NUMBER: 8094

SHEET NUMBER: WA-S-003

not be reproduced, copied, loaned, exhibited, or used in any other way, except by written consent from PARSONS to the borrower.

This document and the design it covers are the property of PARSONS. They are loaned only with the borrower's expressed written agreement that they will

Mon Jul 06 15:38:29 1998 CAPLOTJUE:53-V3882.DCF 52885 K:\V3882\48073.ppt LIGOWAF.BDR