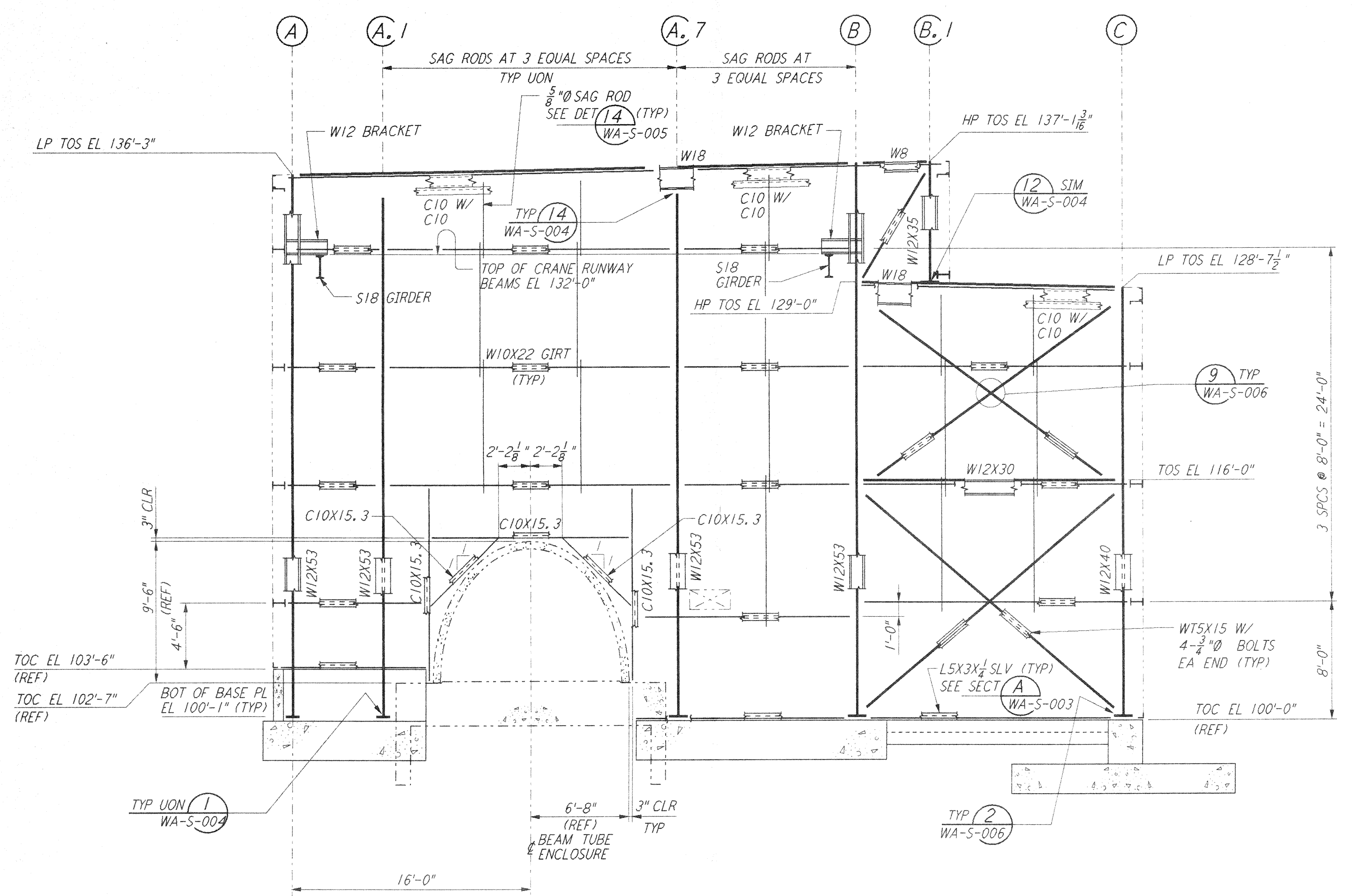
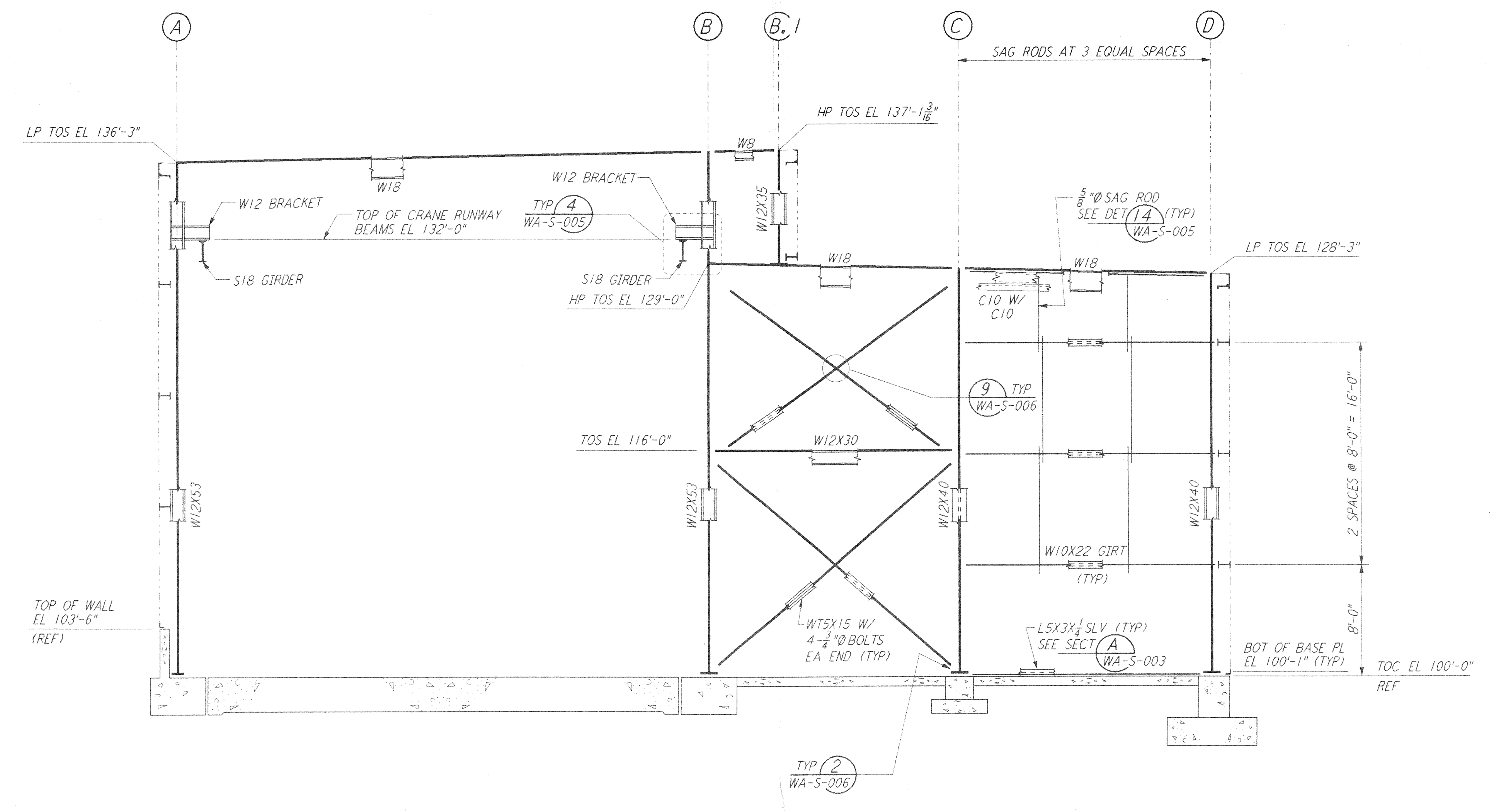


not be reproduced, copied, loaned, exhibited, or used in any other way, except by written consent from PARSONS to the borrower.

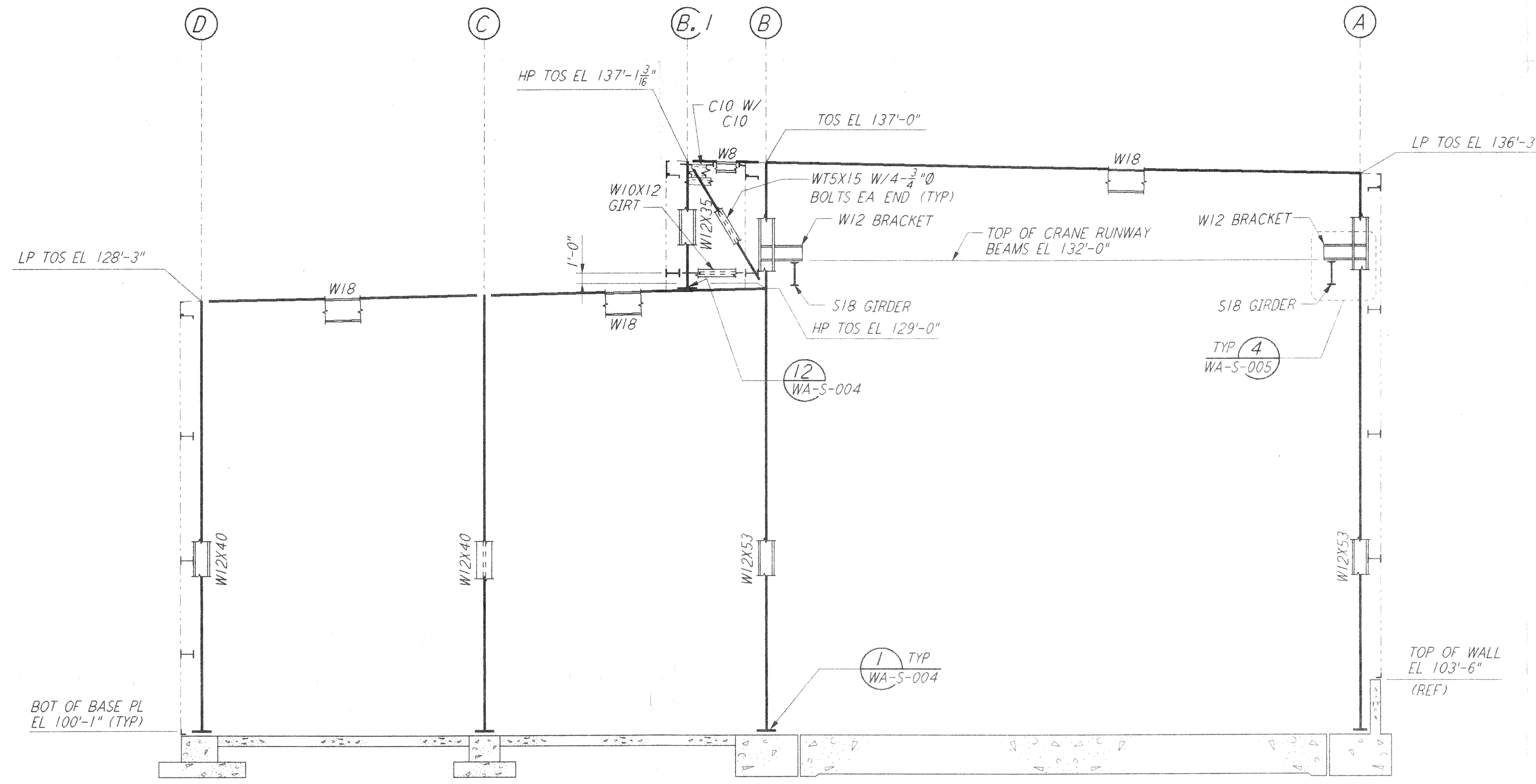
This document and the design it covers are the property of PARSONS. They are loaned only with the borrower's expressed written agreement that they will



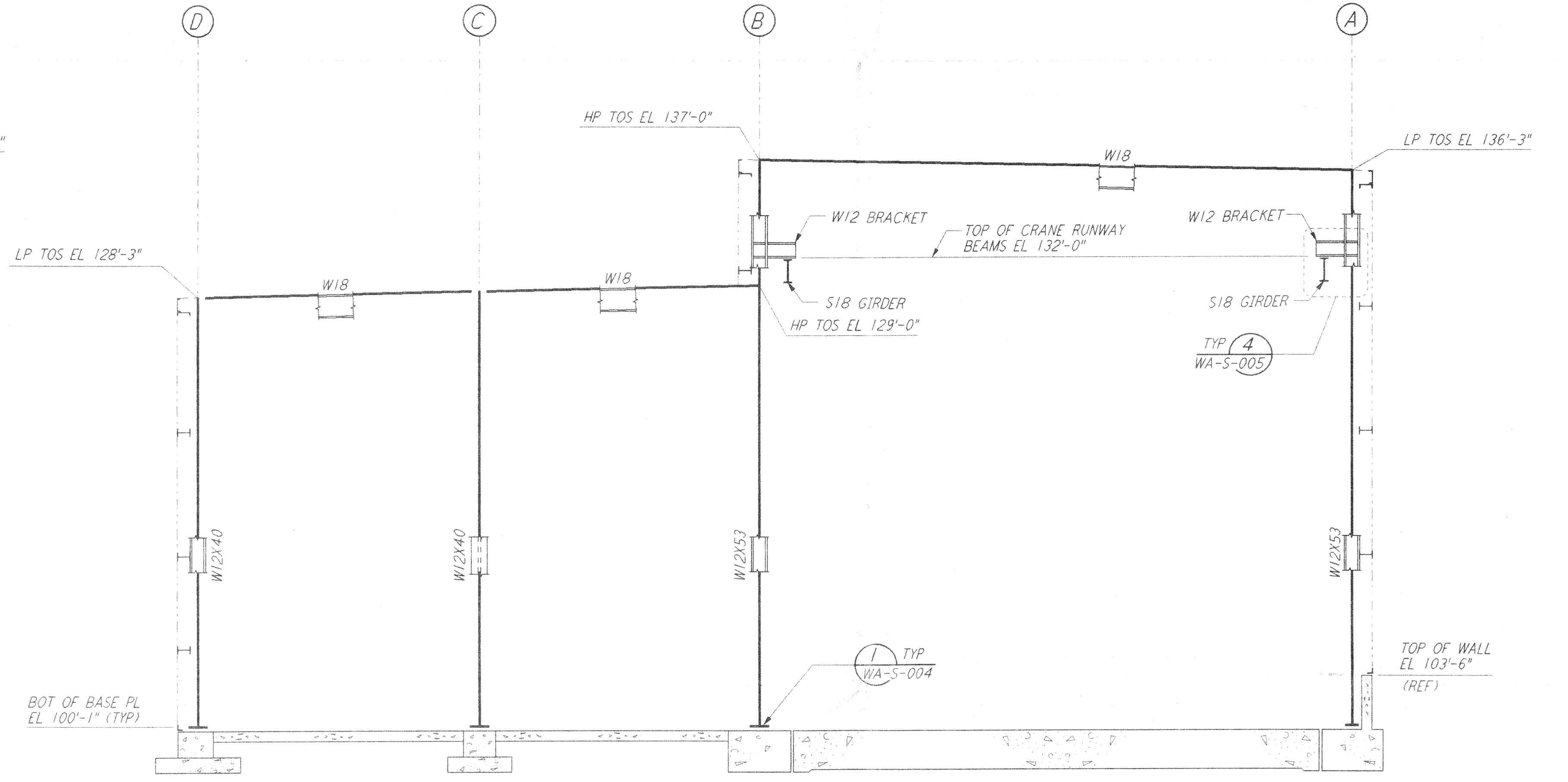
LOOKING EAST - FOR END STATION "B" & MID STATION "B" ON ARM 1 (SOUTHWEST ARM)
 LOOKING NORTH - FOR END STATION "A" & MID STATION "A" ON ARM 2 (NORTHWEST ARM)
 ELEVATION AT COLUMN LINE 1
 $\frac{3}{16}'' = 1'-0''$



LOOKING EAST - FOR END STATION "B" & MID STATION "B" ON ARM 1 (SOUTHWEST ARM)
 LOOKING NORTH - FOR END STATION "A" & MID STATION "A" ON ARM 2 (NORTHWEST ARM)
 ELEVATION AT COLUMN LINE 2
 $\frac{3}{16}'' = 1'-0''$

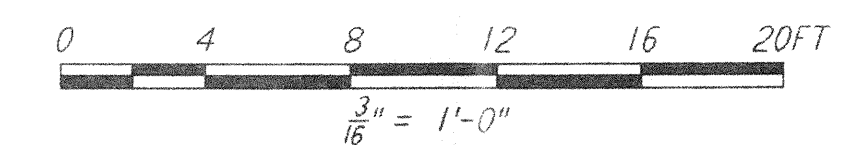


LOOKING WEST - FOR END STATION "B" & MID STATION "B" ON ARM 1 (SOUTHWEST ARM)
 LOOKING SOUTH - FOR END STATION "A" & MID STATION "A" ON ARM 2 (NORTHWEST ARM)
 ELEVATION AT COLUMN LINE 3
 $\frac{3}{16}'' = 1'-0''$



LOOKING WEST - FOR END STATION "B" & MID STATION "B" ON ARM 1 (SOUTHWEST ARM)
 LOOKING SOUTH - FOR END STATION "A" & MID STATION "A" ON ARM 2 (NORTHWEST ARM)
 ELEVATION AT COLUMN LINE 4
 $\frac{3}{16}'' = 1'-0''$

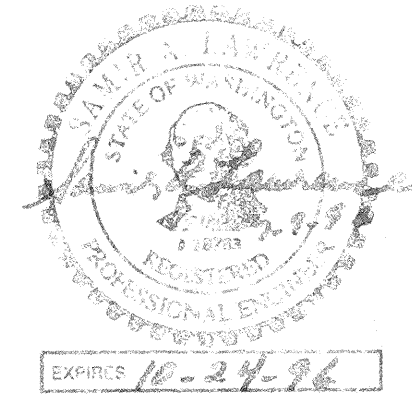
- NOTES:
- FOR NOTES SEE DRAWING WA-S-108.
 - FOR VERTICAL BRACING CONNECTIONS, SEE DETAIL (5) WA-S-006



REFERENCES	DESCRIPTION

REVISIONS	NO.	DATE	BY	CHKD	ENGR	PROJ	DESCRIPTION

ISSUED FOR CONSTRUCTION	
DRAWN	MCS 6-24-96
CHECKED	BBN 7-2-96
ENGINEER	BL 6-28-96
PROJ	WAF 7-19-96



PARSONS
 100 WEST WALNUT STREET
 PASADENA, CALIFORNIA

LIGO
 CALIFORNIA INSTITUTE OF TECHNOLOGY
 MASSACHUSETTS INSTITUTE OF TECHNOLOGY

LASER INTERFEROMETER
 GRAVITATIONAL-WAVE OBSERVATORY
 SITE NO. 1 - HANFORD, WASHINGTON
**STRUCTURAL
 MID & END STATIONS
 FRAMING ELEVATIONS
 SHEET 1**
 SCALE: AS NOTED
 COUNTY NUMBER: PPI 50969
 PROJECT NUMBER: 8094
WA-S-205