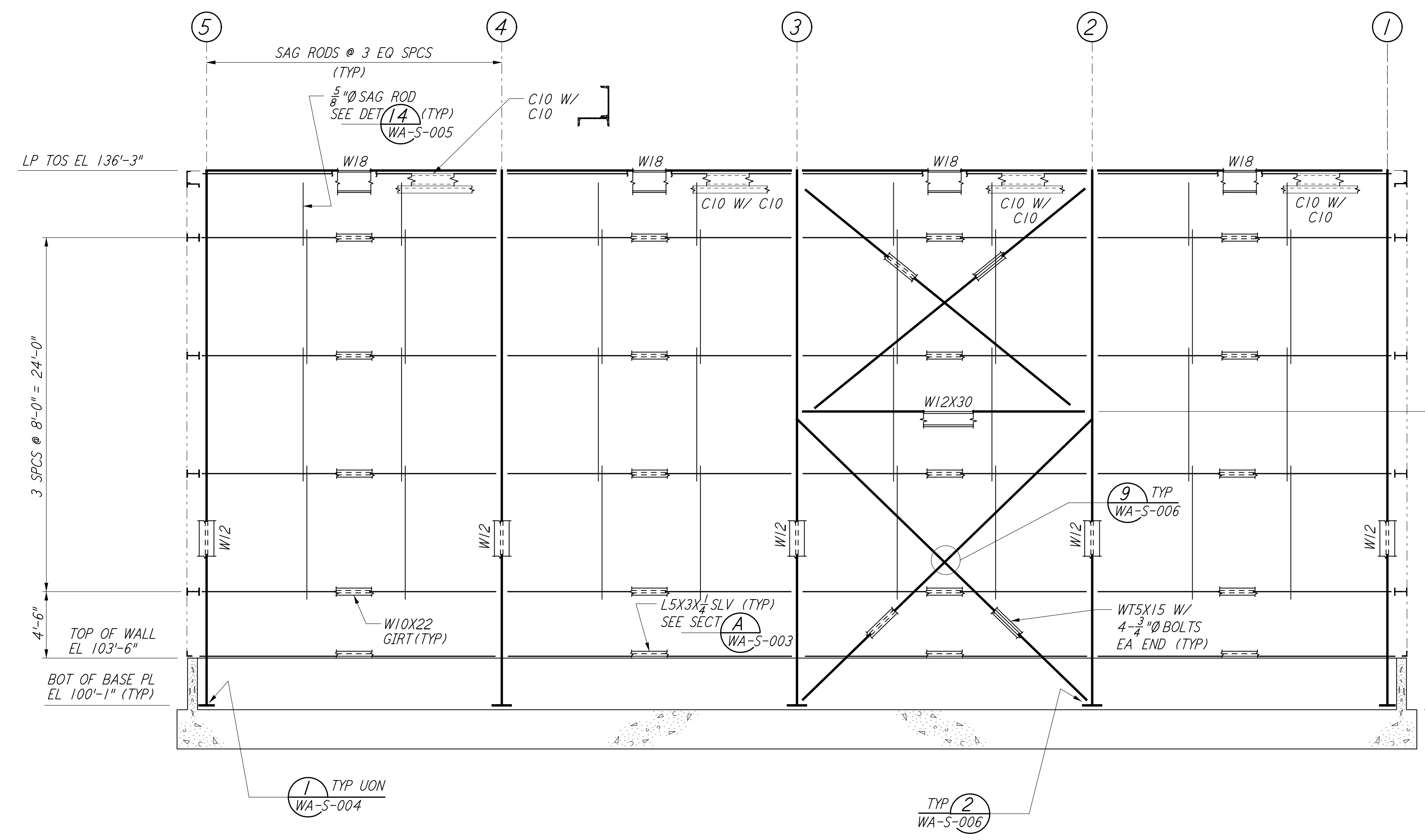
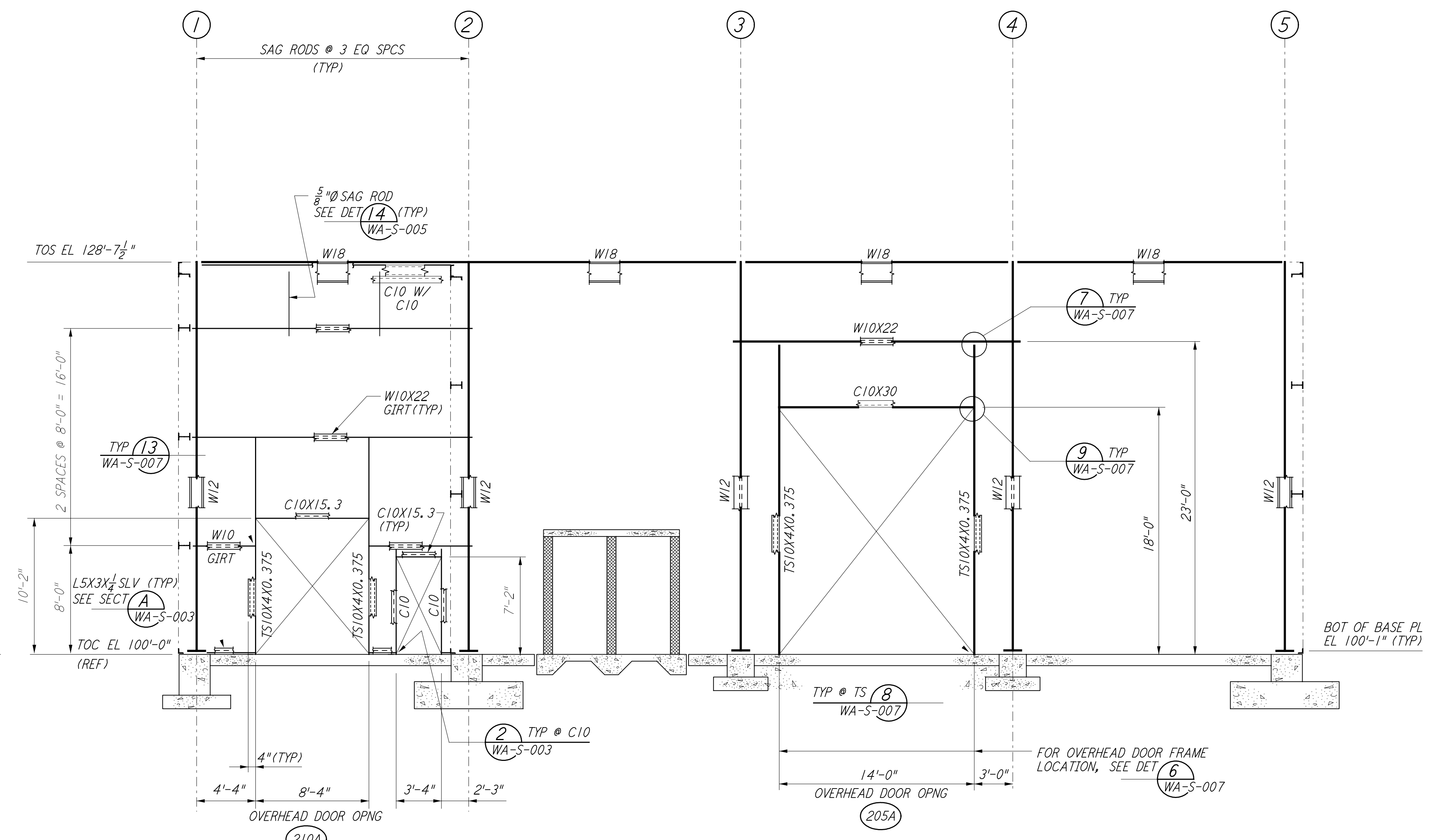


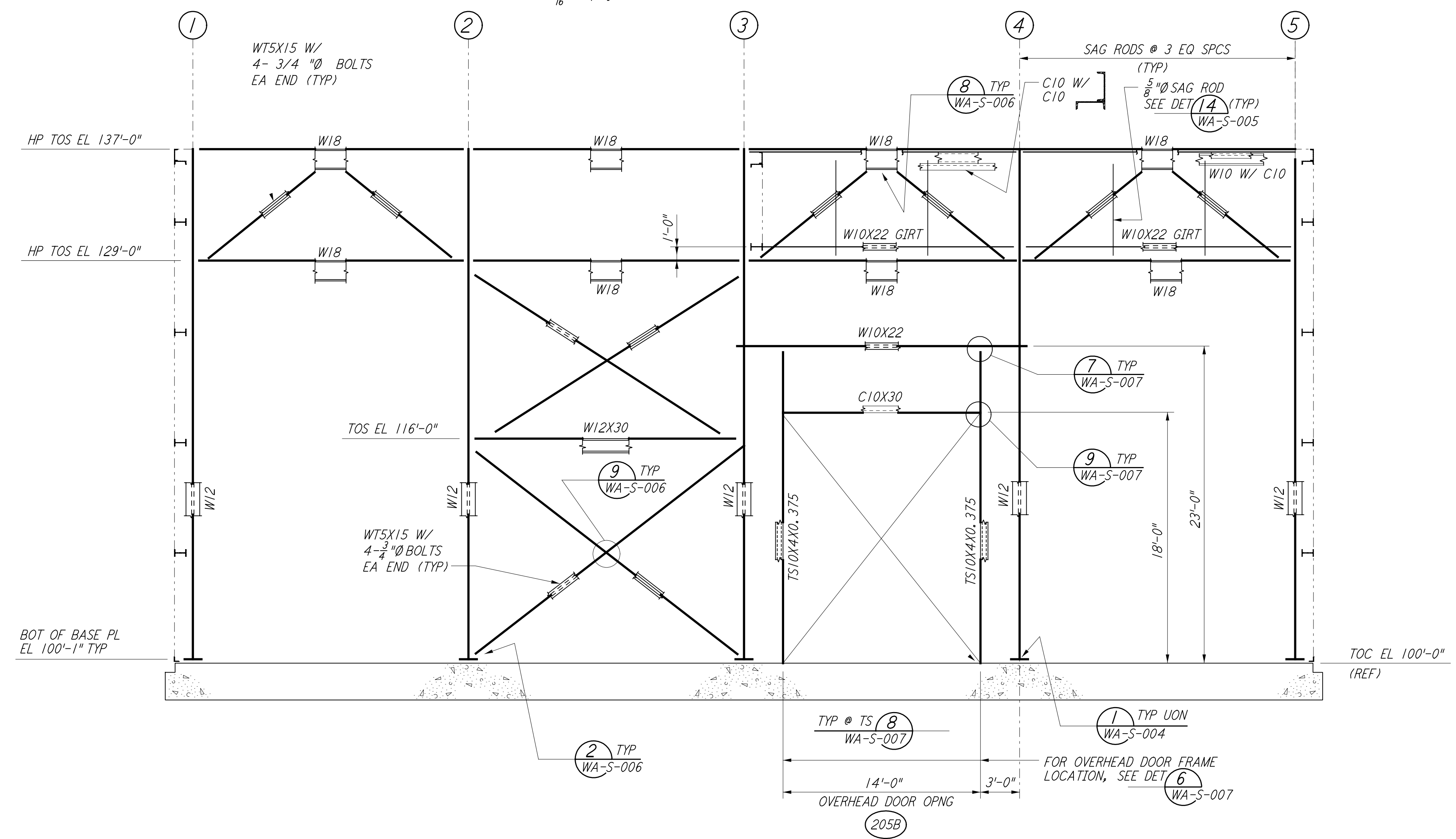
This document and the design it covers are the property of PARSONS. They are loaned only with the borrower's expressed written agreement that they will not be reproduced, copied, loaned, exhibited, or used in any other way, except by written consent from PARSONS to the borrower.



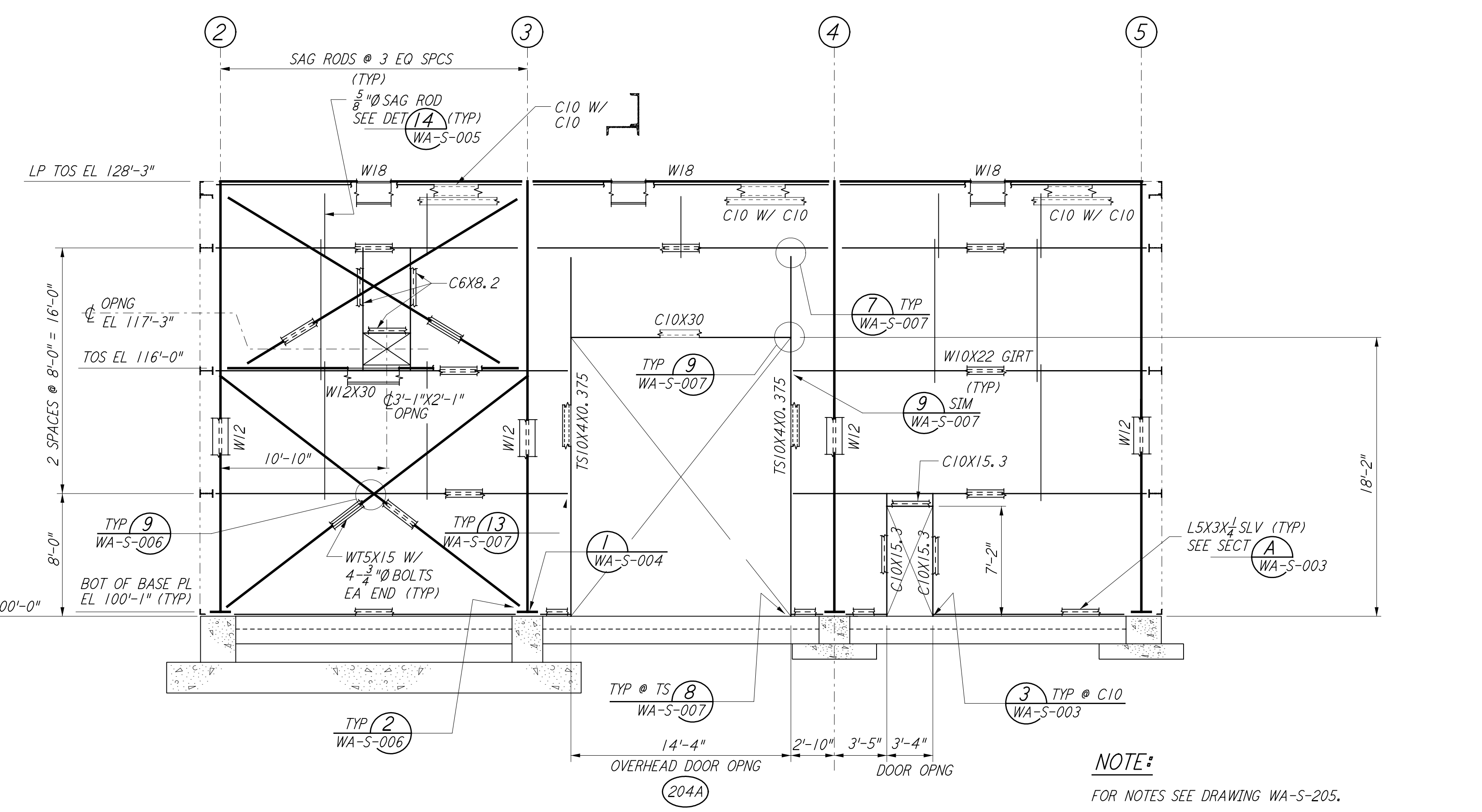
LOOKING NORTH - FOR END STATION "B" & MID STATION "B" ON ARM 1 (SOUTHWEST ARM)
 LOOKING EAST - FOR END STATION "A" & MID STATION "A" ON ARM 2 (NORTHWEST ARM)
 ELEVATION AT COLUMN LINE A
 $\frac{3}{16}'' = 1'-0''$



LOOKING SOUTH - FOR END STATION "B" & MID STATION "B" ON ARM 1 (SOUTHWEST ARM)
 LOOKING WEST - FOR END STATION "A" & MID STATION "A" ON ARM 2 (NORTHWEST ARM)
 ELEVATION AT COLUMN LINE C
 $\frac{3}{16}'' = 1'-0''$

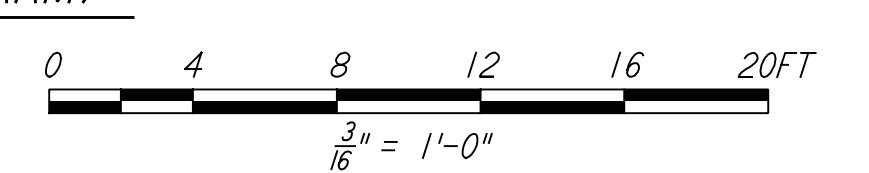


LOOKING SOUTH - FOR END STATION "B" & MID STATION "B" ON ARM 1 (SOUTHWEST ARM)
 LOOKING WEST - FOR END STATION "A" & MID STATION "A" ON ARM 2 (NORTHWEST ARM)
 ELEVATION AT COLUMN LINE B
 $\frac{3}{16}'' = 1'-0''$



LOOKING SOUTH - FOR END STATION "B" & MID STATION "B" ON ARM 1 (SOUTHWEST ARM)
 LOOKING WEST - FOR END STATION "A" & MID STATION "A" ON ARM 2 (NORTHWEST ARM)
 ELEVATION AT COLUMN LINE D
 $\frac{3}{16}'' = 1'-0''$

NOTE: FOR NOTES SEE DRAWING WA-S-205.



LIGO-D960312-01-0

NO.	DATE	BY	CHKD	ENGR	PROJ	DESCRIPTION
1	6-15-98	CKT				ISSUED FOR AS-BUILT

ISSUED FOR CONSTRUCTION		
DRAWN	MCS	6-24-96
CHECKED	DDM	7-2-96
ENGINEER	BP	6-28-96
PROJ	MOW	7-9-96

AS-BUILT DRAWINGS

PARSONS
 100 WEST WALNUT STREET
 PASADENA, CALIFORNIA

LIGO
 CALIFORNIA INSTITUTE OF TECHNOLOGY
 MASSACHUSETTS INSTITUTE OF TECHNOLOGY

LASER INTERFEROMETER
 GRAVITATIONAL-WAVE OBSERVATORY
 SITE NO. 1 - HANFORD, WASHINGTON

TITLE	STRUCTURAL MID & END STATIONS FRAMING ELEVATIONS SHEET 2	SCALE	AS NOTED	PROJECT NUMBER	8094
SHEET NUMBER	WA-S-206	REVISIONS			