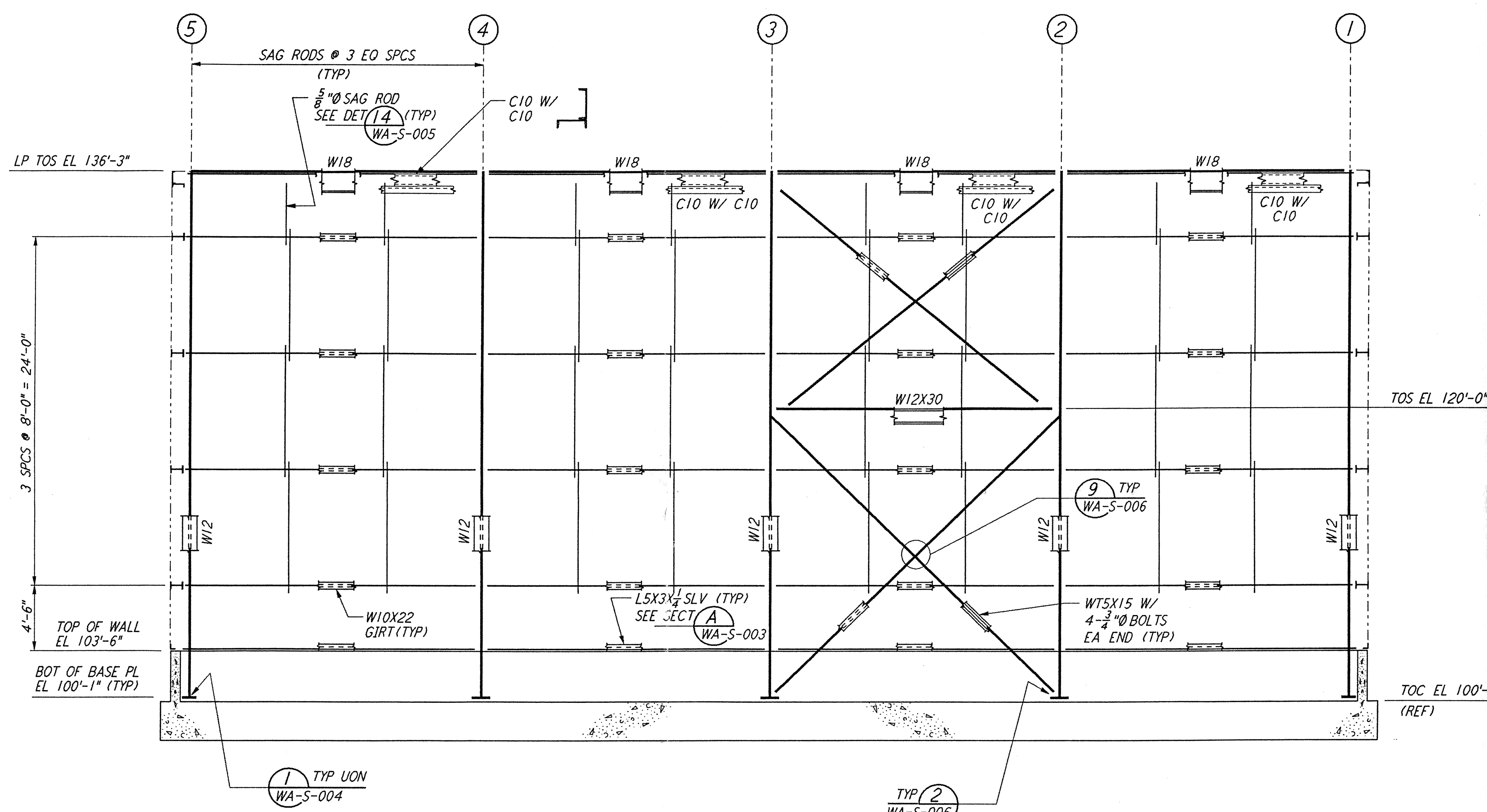
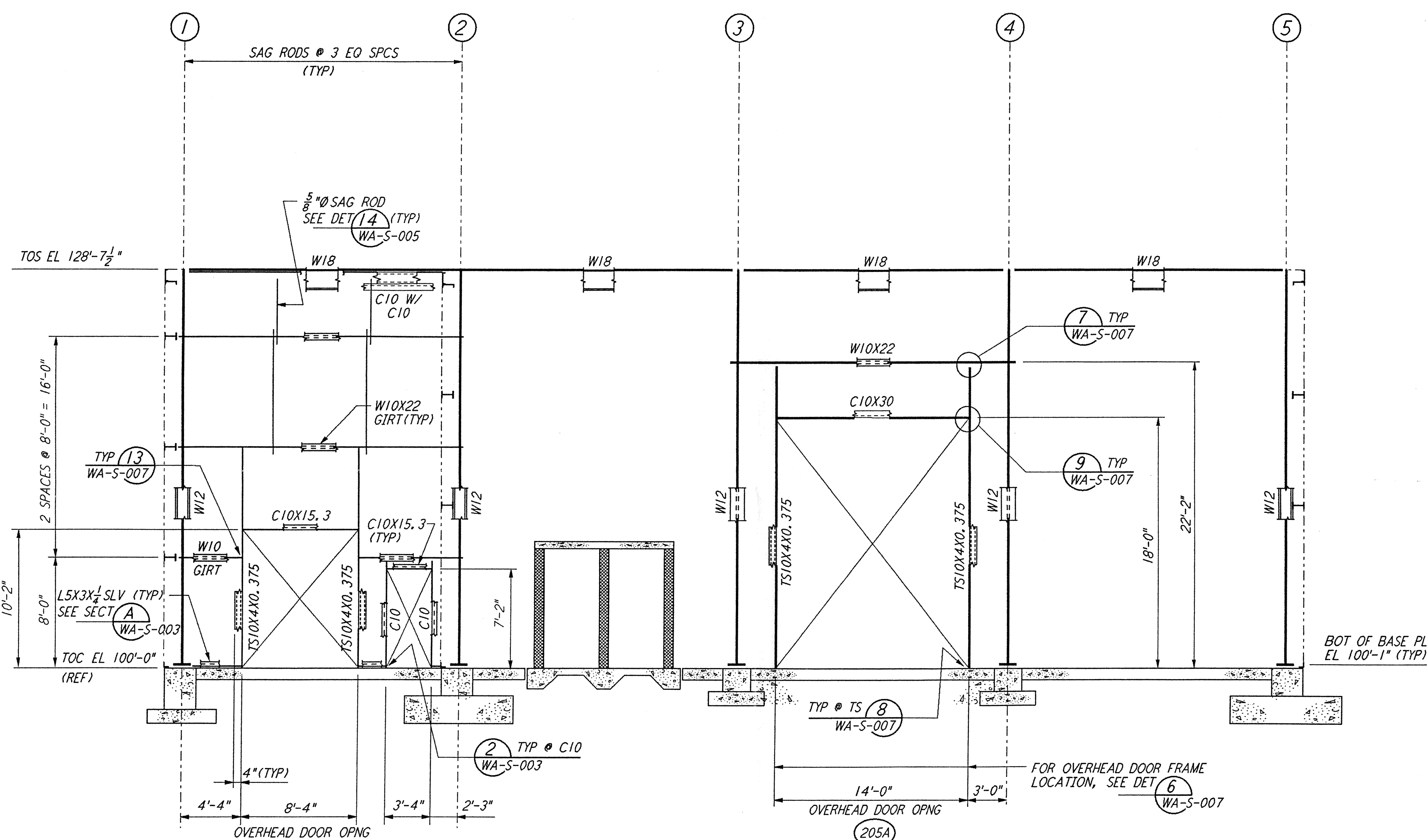


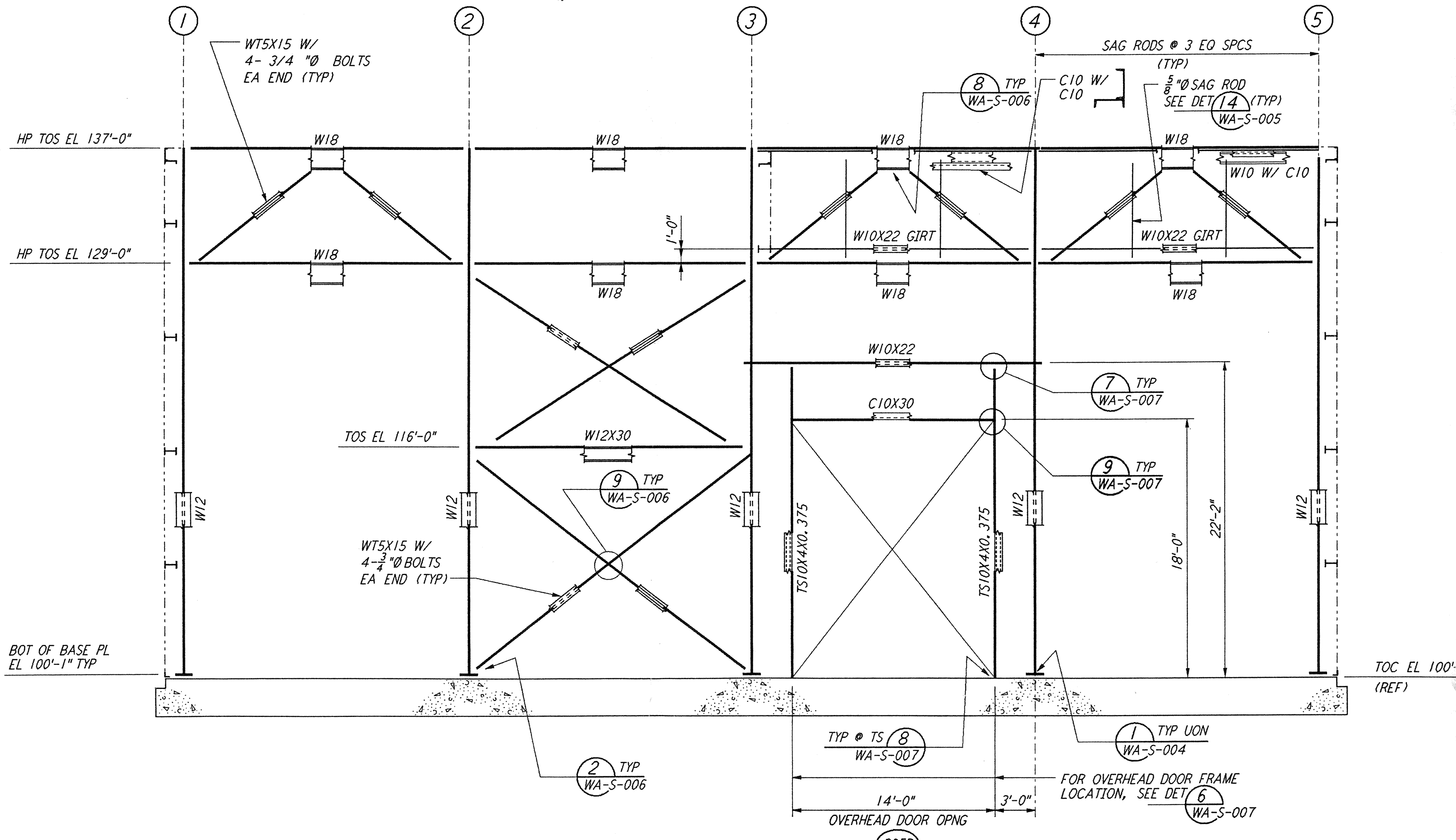
This document and the design it covers are the property of PARSONS. They are loaned only with the borrower's expressed written agreement that they will not be reproduced, copied, loaned, exhibited, or used in any other way, except by written consent from PARSONS to the borrower.



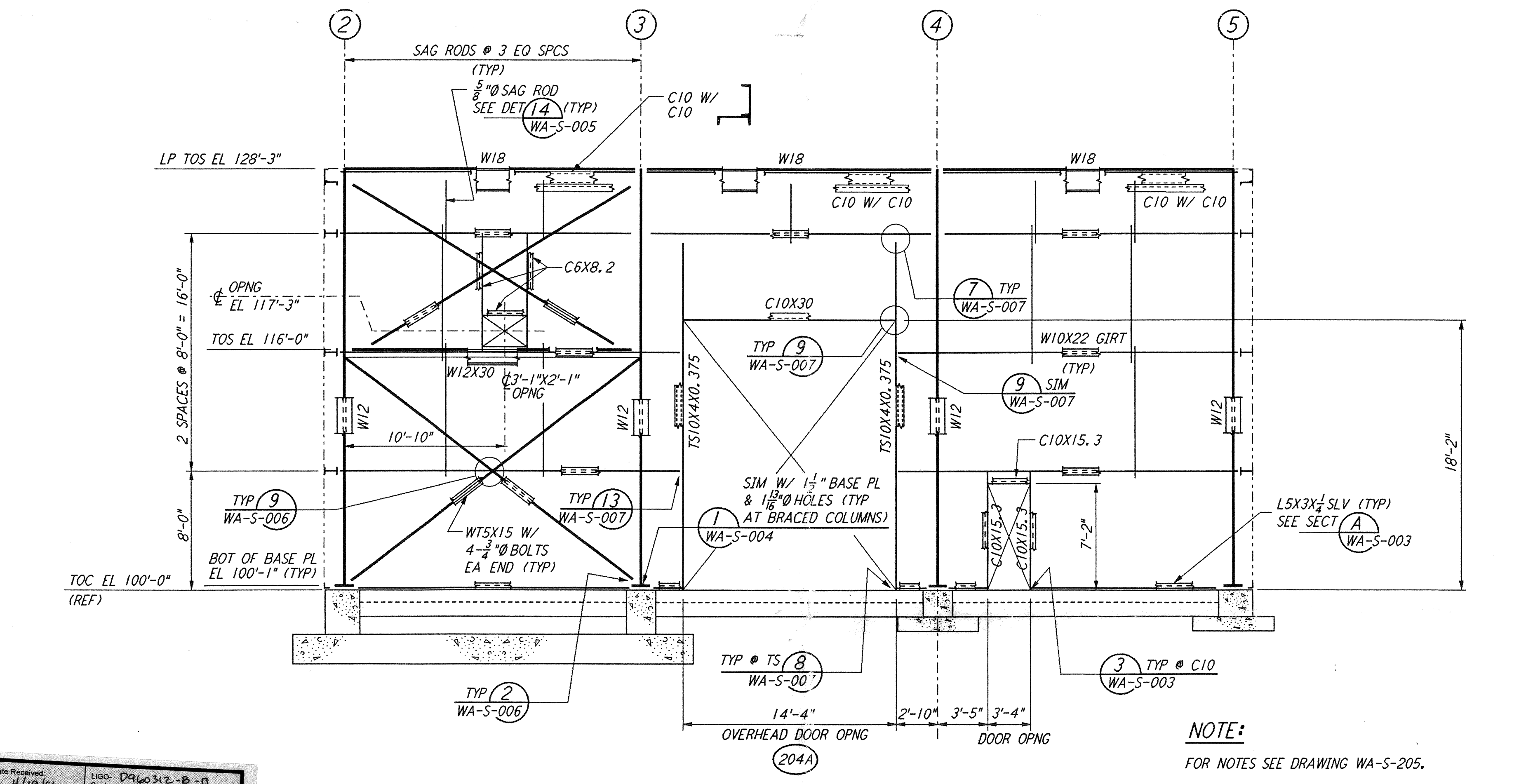
LOOKING NORTH - FOR END STATION "B" & MID STATION "B" ON ARM 1 (SOUTHWEST ARM)  
 LOOKING EAST - FOR END STATION "A" & MID STATION "A" ON ARM 2 (NORTHWEST ARM)  
**ELEVATION AT COLUMN LINE A**  
 $\frac{3}{8}'' = 1'-0''$



LOOKING SOUTH - FOR END STATION "B" & MID STATION "B" ON ARM 1 (SOUTHWEST ARM)  
 LOOKING WEST - FOR END STATION "A" & MID STATION "A" ON ARM 2 (NORTHWEST ARM)  
**ELEVATION AT COLUMN LINE C**  
 $\frac{3}{8}'' = 1'-0''$

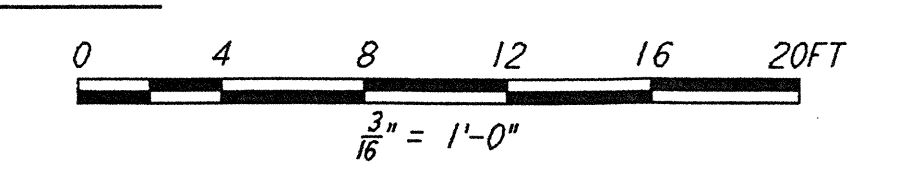


LOOKING SOUTH - FOR END STATION "B" & MID STATION "B" ON ARM 1 (SOUTHWEST ARM)  
 LOOKING WEST - FOR END STATION "A" & MID STATION "A" ON ARM 2 (NORTHWEST ARM)  
**ELEVATION AT COLUMN LINE B**  
 $\frac{3}{8}'' = 1'-0''$



LOOKING SOUTH - FOR END STATION "B" & MID STATION "B" ON ARM 1 (SOUTHWEST ARM)  
 LOOKING WEST - FOR END STATION "A" & MID STATION "A" ON ARM 2 (NORTHWEST ARM)  
**ELEVATION AT COLUMN LINE D**  
 $\frac{3}{8}'' = 1'-0''$

NOTE: FOR NOTES SEE DRAWING WA-S-205.



Date Received: 4/19/96	LIGO: D960312-B-0
Contractor: WA-S-206, 850.0	
Time: 2.9	LIGO: 0960867-00-V
Date: 4/19/96	Approved:
TDM #:	LIGO:
Date: / /	Approved:
Client Transmittal:	LIGO:
Date: / /	Approved:

NO.	DATE	BY	CHKD	ENGR	PROJ	DESCRIPTION
B	4-19-96	MCS	dm	ph	DM	FINAL DESIGN REVIEW & BID
A	10-31-95				TDM	PRELIMINARY DESIGN REVIEW

DRAWN	MCS
CHECKED	
ENGINEER	
PROJ	

**PARSONS**  
 100 WEST WALNUT STREET  
 PASADENA, CALIFORNIA

**LIGO**  
 CALIFORNIA INSTITUTE OF TECHNOLOGY  
 MASSACHUSETTS INSTITUTE OF TECHNOLOGY

LASER INTERFEROMETER  
 GRAVITATIONAL-WAVE OBSERVATORY  
 SITE NO. 1 - HANFORD, WASHINGTON

TITLE	STRUCTURAL MID & END STATIONS FRAMING ELEVATIONS SHEET 2	SCALE	AS NOTED	CONTRACT NUMBER	PPI50969	PROJECT NUMBER	8094
SHEET NUMBER	<b>WA-S-206</b>	REVISIONS					

LIGO: D960312-B-0