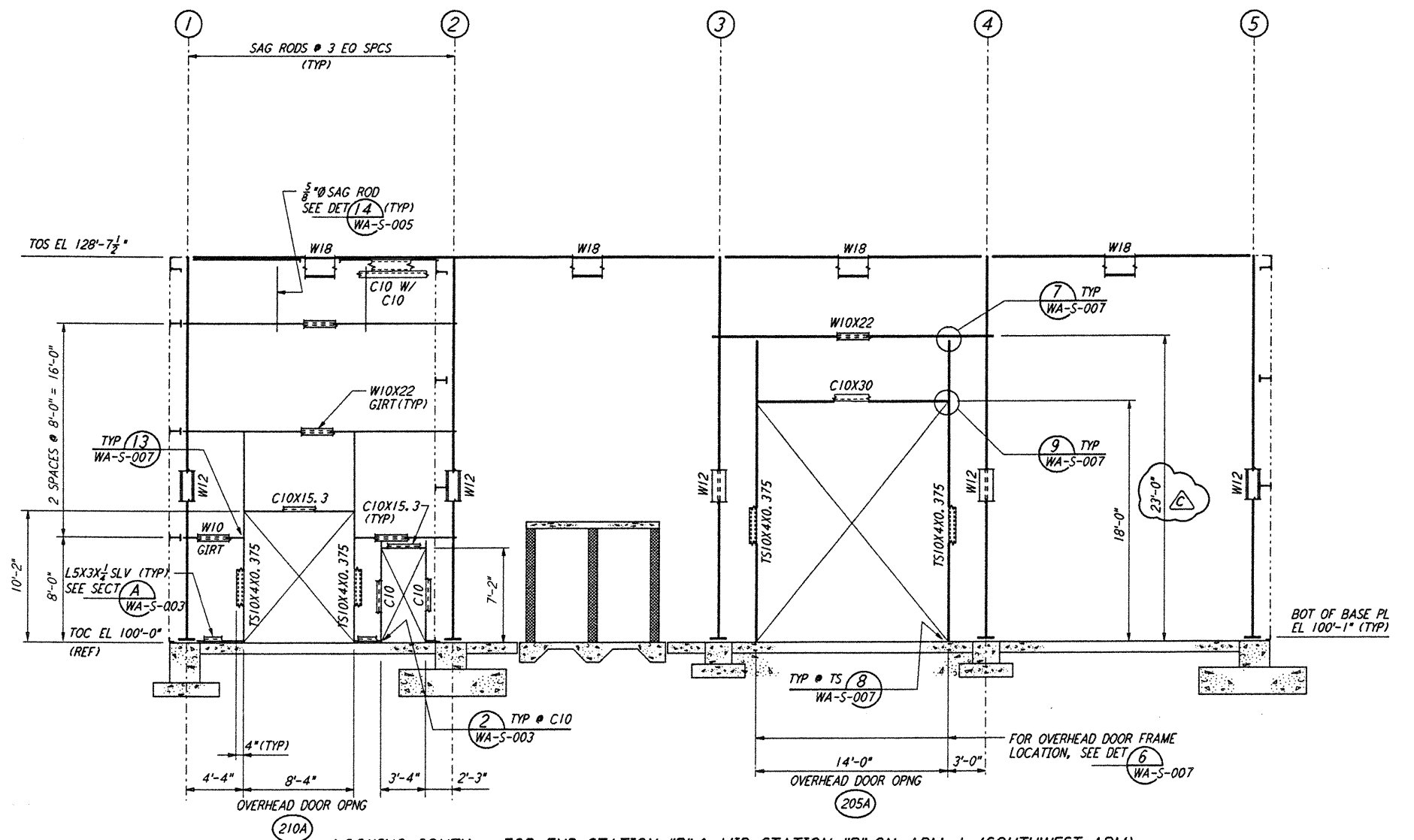
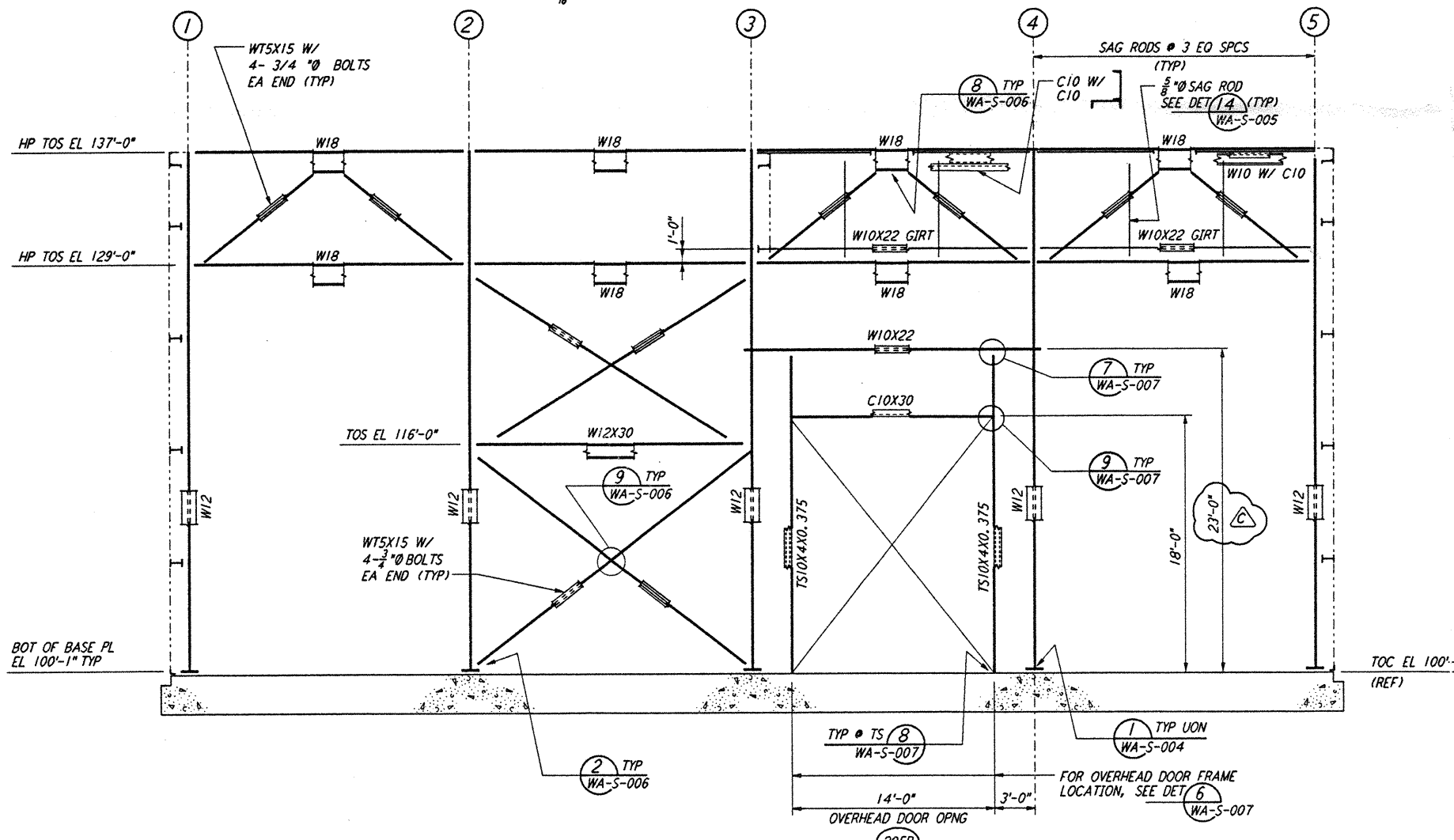


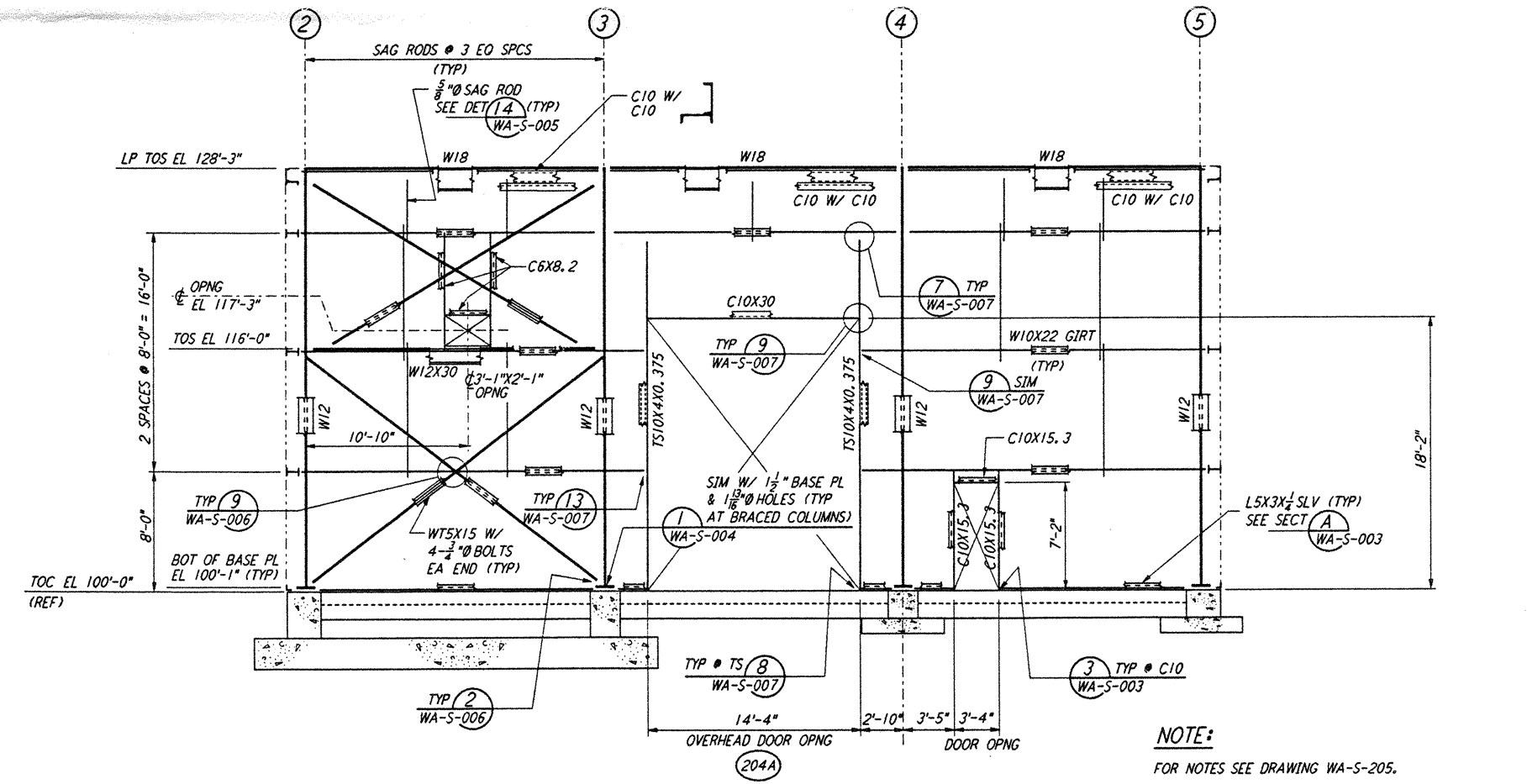
LOOKING NORTH - FOR END STATION "B" & MID STATION "B" ON ARM 1 (SOUTHWEST ARM)  
 LOOKING EAST - FOR END STATION "A" & MID STATION "A" ON ARM 2 (NORTHWEST ARM)  
 ELEVATION AT COLUMN LINE A  
 $\frac{1}{2}'' = 1'-0''$



LOOKING SOUTH - FOR END STATION "B" & MID STATION "B" ON ARM 1 (SOUTHWEST ARM)  
 LOOKING WEST - FOR END STATION "A" & MID STATION "A" ON ARM 2 (NORTHWEST ARM)  
 ELEVATION AT COLUMN LINE C  
 $\frac{1}{2}'' = 1'-0''$

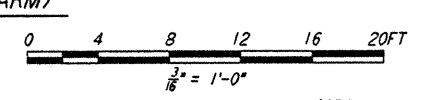


LOOKING SOUTH - FOR END STATION "B" & MID STATION "B" ON ARM 1 (SOUTHWEST ARM)  
 LOOKING WEST - FOR END STATION "A" & MID STATION "A" ON ARM 2 (NORTHWEST ARM)  
 ELEVATION AT COLUMN LINE B  
 $\frac{1}{2}'' = 1'-0''$



LOOKING SOUTH - FOR END STATION "B" & MID STATION "B" ON ARM 1 (SOUTHWEST ARM)  
 LOOKING WEST - FOR END STATION "A" & MID STATION "A" ON ARM 2 (NORTHWEST ARM)  
 ELEVATION AT COLUMN LINE D  
 $\frac{1}{2}'' = 1'-0''$

NOTE:  
 FOR NOTES SEE DRAWING WA-S-205.



LIGO-D960312-C-0

This document and the design it covers are the property of PARSONS. They are loaned only with the borrower's expressed written agreement that they will not be reproduced, copied, loaned, exhibited, or used in any other way, except by written consent from PARSONS to the borrower.

This document and the design it covers are the property of PARSONS. They are loaned only with the borrower's expressed written agreement that they will not be reproduced, copied, loaned, exhibited, or used in any other way, except by written consent from PARSONS to the borrower.

NO.	DATE	BY	CHKD	ENGR	PROJ	DESCRIPTION
C	5-22-96	MCS	DDM	BP	DDM	BID ADDENDUM #2
B	4-19-96	MCS	DDM	BP	TOM	FINAL DESIGN REVIEW & BID
A	10-31-95	MCS	DDM	BP	TOM	PRELIMINARY DESIGN REVIEW

DRAWN	MCS
CHECKED	
ENGINEER	
PROJ	

**PARSONS**  
 100 WEST WALNUT STREET  
 PASADENA, CALIFORNIA

**LIGO**  
 CALIFORNIA INSTITUTE OF TECHNOLOGY  
 MASSACHUSETTS INSTITUTE OF TECHNOLOGY

LASER INTERFEROMETER  
 GRAVITATIONAL-WAVE OBSERVATORY  
 SITE NO. 1 - HANFORD, WASHINGTON

TITLE: STRUCTURAL MID & END STATIONS FRAMING ELEVATIONS SHEET 2

AS NOTED PP150969 8094  
**WA-S-206**

DATE PLOTTED: 05/20/96 15:36:10  
 PLOTTER: HP-GL/2  
 PLOT FILE: I:\lgo\site\st\was206.dwg