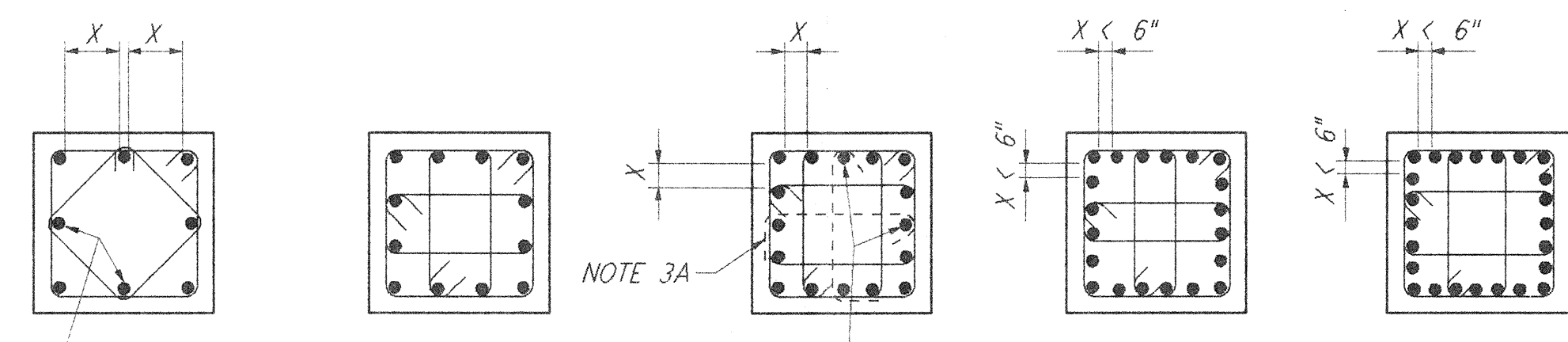
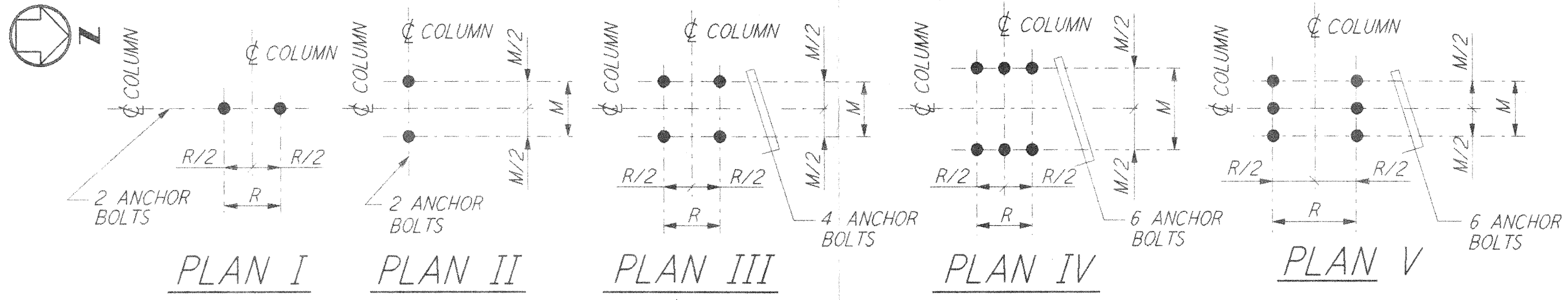
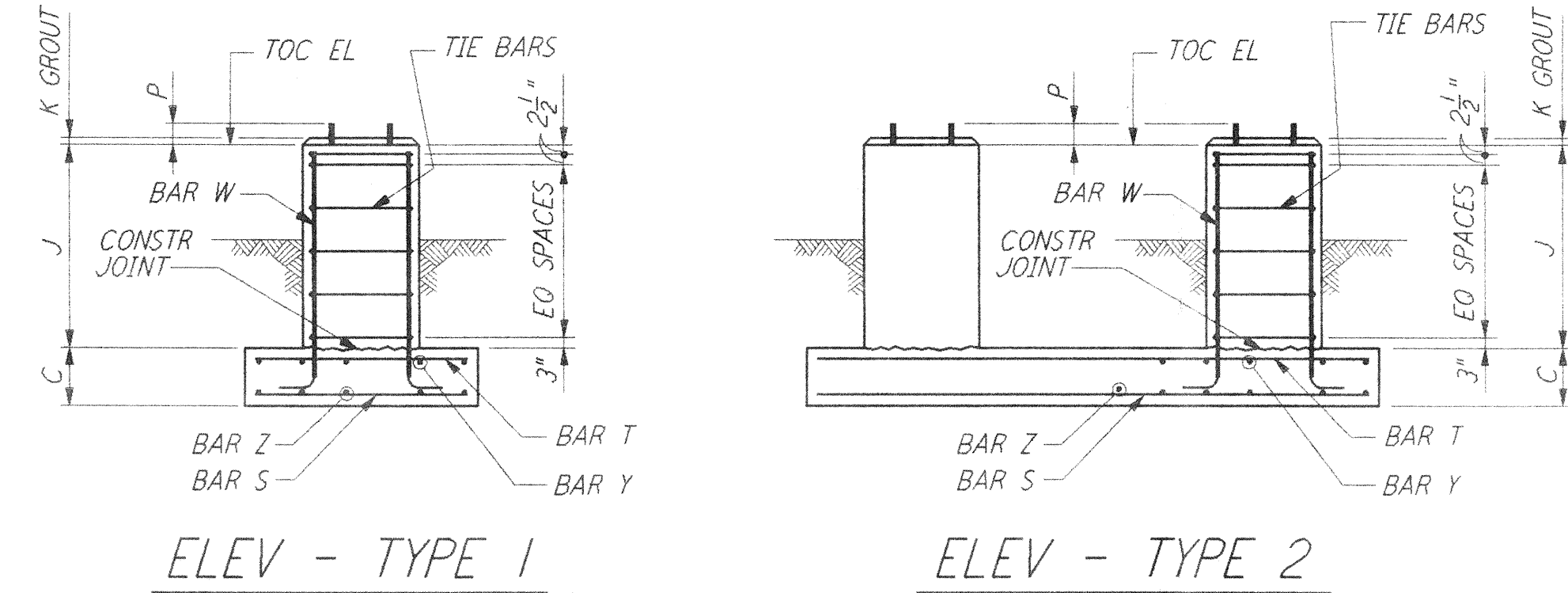


4 - BARS
TYPE A



8 - BARS TYPE B
 12 - BARS TYPE C
 16 - BARS TYPE D
 20 - BARS TYPE E
 24 - BARS TYPE F
 TIE ARRANGEMENT TYPE

TIE REINFORCEMENT NOTES:
 1A. THESE BARS MUST BE TIED AS SHOWN BY DASHED LINES WHEN X DISTANCE IS OVER 6 INCHES.
 2A. THESE BARS NEED NOT BE TIED WHEN X DISTANCE IS 6 INCHES OR LESS.
 3A. ALTERNATE 90° HOOKS IN COLUMNS.



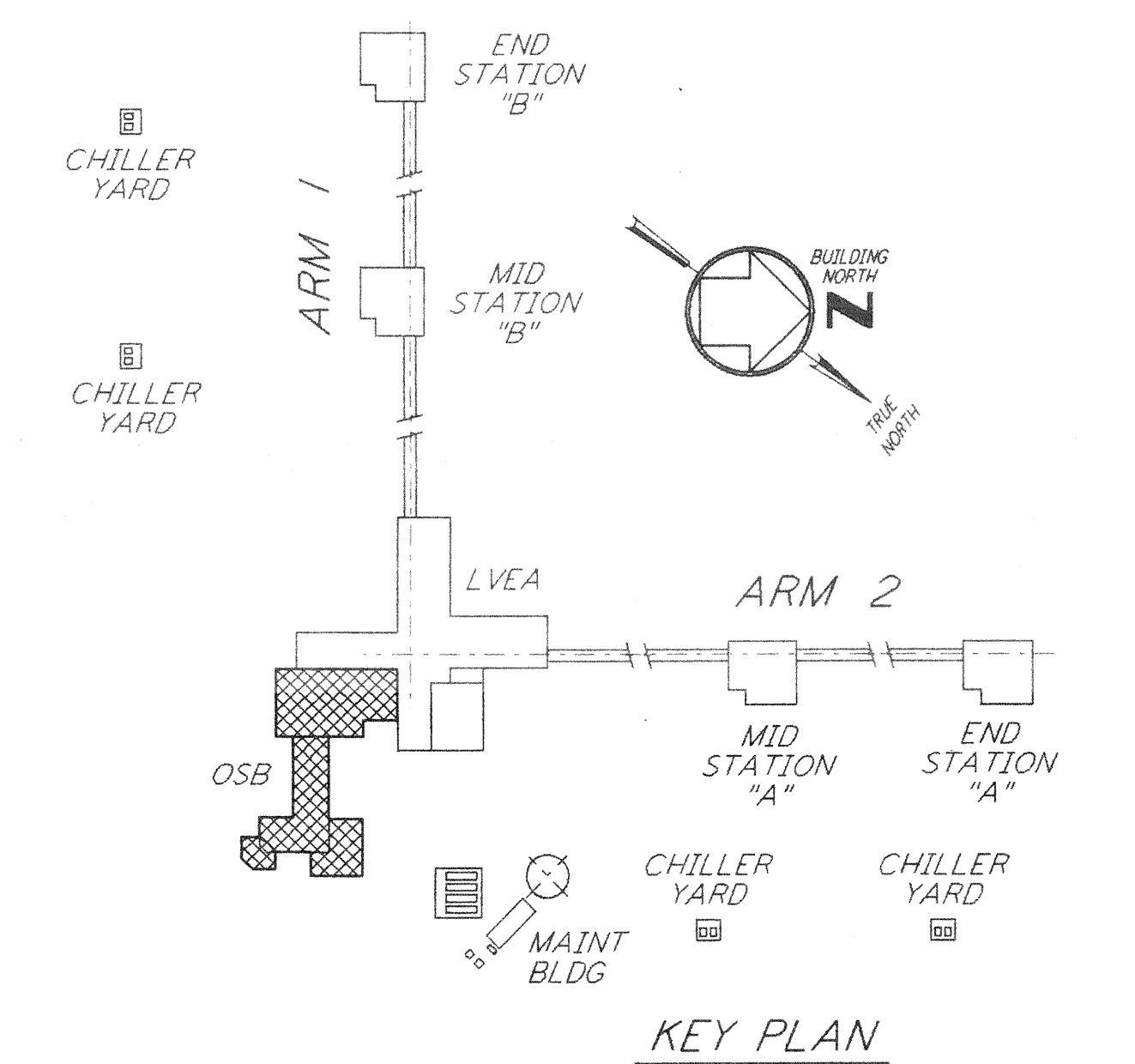
ANCHOR BOLT PLAN

NOTES:
 1. CONSTRUCTION SHALL COMPLY WITH ALL THE REQUIREMENTS OF THE GENERAL NOTES ON DRAWING WA-S-001.
 2. THE BAR SPACING IS BASED ON CENTER TO CENTER OF TIE SET.
 3. FOR ANCHOR BOLT DETAILS SEE DRAWING WA-S-003.

not be reproduced, copied, loaned, exhibited, or used in any other way, except by written consent from PARSONS to the borrower.

This document and the design it covers are the property of PARSONS. They are loaned only with the borrower's expressed written agreement that they will

NO. OF FDN'S REQD	FOUNDATION LOCATION (COL. LINES)	TOP OF CONC EL	FOUNDATION TYPE	DIMENSIONS													ANCHOR BOLTS PER PIER						REINFORCING PER FOUNDATION										CONC CY	FDN LOC PLAN	REMARKS																
				PLAN	ELEV	A	B	C	D	F	G	H	J	K	M	R	N	ANCHOR BOLT PLAN	TYPE	NO PER PIER	SIZE Ø	L	P	BAR S NO	BAR S SIZE	BAR Z NO	BAR Z SIZE	BAR T NO	BAR T SIZE	BAR Y NO	BAR Y SIZE	BAR W NO				BAR W SIZE	TIE BAR TYPE	TIE BAR SIZE	NO RECD												
																																								NO	SIZE	NO	SIZE	NO	SIZE	NO	SIZE	NO	SIZE	NO	SIZE
1	V-18	100'-0"	B	2	4'-0"	9'-0"	1'-6"	10"	10"	10"	10"	1'-2"	1"	7"	7"	5'-0"	III	2	4	1"	1'-4"	4"	5	#6	10	#6	5	#6	10	#6	8	#6	B	#4	3	2.3	WA-S-102														
	V, 2-18	100'-0"						10"	10"	10"	10"	1'-2"	1"	7"	7"																								8	#6	B	#4	3								
1	W-17, 2	100'-0"	B	2	4'-0"	9'-0"	1'-6"	10"	10"	10"	10"	1'-2"	1"	7"	7"	5'-0"	III	2	4	1"	1'-4"	4"	5	#6	10	#6	5	#6	10	#6	8	#6	B	#4	3	2.3	WA-S-102														
	W-17	100'-0"						10"	10"	10"	10"	1'-2"	1"	7"	7"																								8	#6	B	#4	3								
1	T-16, 3	100'-0"	B	2	4'-0"	24'-0"	1'-6"	10"	10"	10"	10"	1'-2"	1"	7"	7"	20'-0"	III	2	4	1"	1'-4"	4"	5	#6	25	#6	5	#6	25	#6	8	#6	B	#4	3	6.0	WA-S-102														
	U-16, 3	100'-0"						10"	10"	10"	10"	1'-2"	1"	7"	7"																								8	#6	B	#4	3								
1	W-15, 3	100'-0"	B	2	4'-0"	24'-0"	1'-6"	10"	10"	10"	10"	1'-2"	1"	7"	7"	20'-0"	III	2	4	1"	1'-4"	4"	5	#6	25	#6	5	#6	25	#6	8	#6	B	#4	3	6.0	WA-S-102														
	W-14, 3	100'-0"						10"	10"	10"	10"	1'-2"	1"	7"	7"																								8	#6	B	#4	3								
1	U-18	100'-0"	B	2	6'-0"	24'-0"	1'-6"	10"	10"	10"	10"	1'-6"	1"	7"	7"	20'-0"	III	2	4	1"	1'-4"	4"	7	#6	25	#6	7	#6	25	#6	8	#6	B	#4	3	9.0	WA-S-102														
	U-17	100'-0"						10"	10"	10"	10"	1'-6"	1"	7"	7"																								8	#6	B	#4	3								
1	K, 3-17	100'-0"	-	-	-	-	10"	10"	10"	10"	2'-6"	1"	7"	7"	-	III	2	4	1"	1'-4"	4"	-	-	-	-	-	-	-	-	-	-	-	-	-	-	-	-	20.0	WA-S-102	FOR ADDITIONAL INFORMATION SEE FDN LOCATION PLAN											
	J, 3-17	100'-0"					10"	10"	10"	10"	2'-6"	1"	7"	7"																											III	2	4	1"	1'-4"	4"	8	#6	B	#4	5
	J, 3-16, 3	100'-0"					10"	10"	10"	10"	2'-6"	1"	7"	7"																											III	2	4	1"	1'-4"	4"	8	#6	B	#4	5
	J, 3-15, 3	100'-0"					10"	10"	10"	10"	2'-6"	1"	7"	7"																											III	2	4	1"	1'-4"	4"	8	#6	B	#4	5
1	K, 3-12, 3	100'-0"	-	-	-	-	10"	10"	10"	10"	1"	7"	7"	-	III	2	4	1"	1'-4"	4"	-	-	-	-	-	-	-	-	-	-	-	-	-	-	-	-	-	42.0	WA-S-102	FOR ADDITIONAL INFORMATION SEE FDN LOCATION PLAN											
	J, 3-12, 3	100'-0"					1"	7"	7"	III	2	4	1"																												1'-4"	4"	8	#6	B	#4	5				
	J, 3-11, 3	100'-0"					1"	7"	7"	III	2	4	1"																												1'-4"	4"	8	#6	B	#4	5				
	J, 3-10, 3	100'-0"					1"	7"	7"	III	2	4	1"																												1'-4"	4"	8	#6	B	#4	5				
	K, 3-10, 3	100'-0"					1"	7"	7"	III	2	4	1"																												1'-4"	4"	8	#6	B	#4	5				
1	L, 3-10, 3	100'-0"	-	-	-	-	10"	10"	10"	10"	2'-6"	1"	7"	7"	-	III	2	4	1"	1'-4"	4"	-	-	-	-	-	-	-	-	-	-	-	-	-	-	-	-	14.3	WA-S-102	FOR ADDITIONAL INFORMATION SEE FDN LOCATION PLAN											
	P, 3-14, 3	100'-0"					10"	10"	10"	10"	2'-6"	1"	7"	7"																											8	#6	B	#4	5						
	N, 3-14, 3	100'-0"					10"	10"	10"	10"	2'-6"	1"	7"	7"																											8	#6	B	#4	5						
1	M, 3-13, 3	100'-0"	-	-	-	-	10"	10"	10"	10"	2'-6"	1"	7"	7"	-	III	2	4	1"	1'-4"	4"	-	-	-	-	-	-	-	-	-	-	-	-	-	-	-	-	15.0	WA-S-102	FOR ADDITIONAL INFORMATION SEE FDN LOCATION PLAN											
	M, 3-11, 3	100'-0"					1"	7"	7"	III	2	4	1"	1'-4"																											4"	8	#6	B	#4	5					
1	M, 3-10, 3	100'-0"	-	-	-	-	1"	7"	7"	-	-	-	-	-	III	2	4	1"	1'-4"	4"	-	-	-	-	-	-	-	-	-	-	-	-	-	-	-	-	-														



NO.	DATE	BY	CHKD	ENGR	PROJ	DESCRIPTION

ISSUED FOR CONSTRUCTION
 DRAWN MCS 6-24-96
 CHECKED 80m 7-2-96
 ENGINEER PH 6-28-96
 PROJ 1100 7-13-96



PARSONS
 100 WEST WALNUT STREET
 PASADENA, CALIFORNIA

LIGO
 CALIFORNIA INSTITUTE OF TECHNOLOGY
 MASSACHUSETTS INSTITUTE OF TECHNOLOGY

TITLE			SCALE	CONTRACT NUMBER	PROJECT NUMBER
STRUCTURAL CORNER STATION - OSB FOUNDATION SCHEDULE AND DETAILS SHEET 2			NONE	PPI50969	8094
SHEET NUMBER			WA-S-403		
DRAWING NO.			LIGOD960318-00-0		