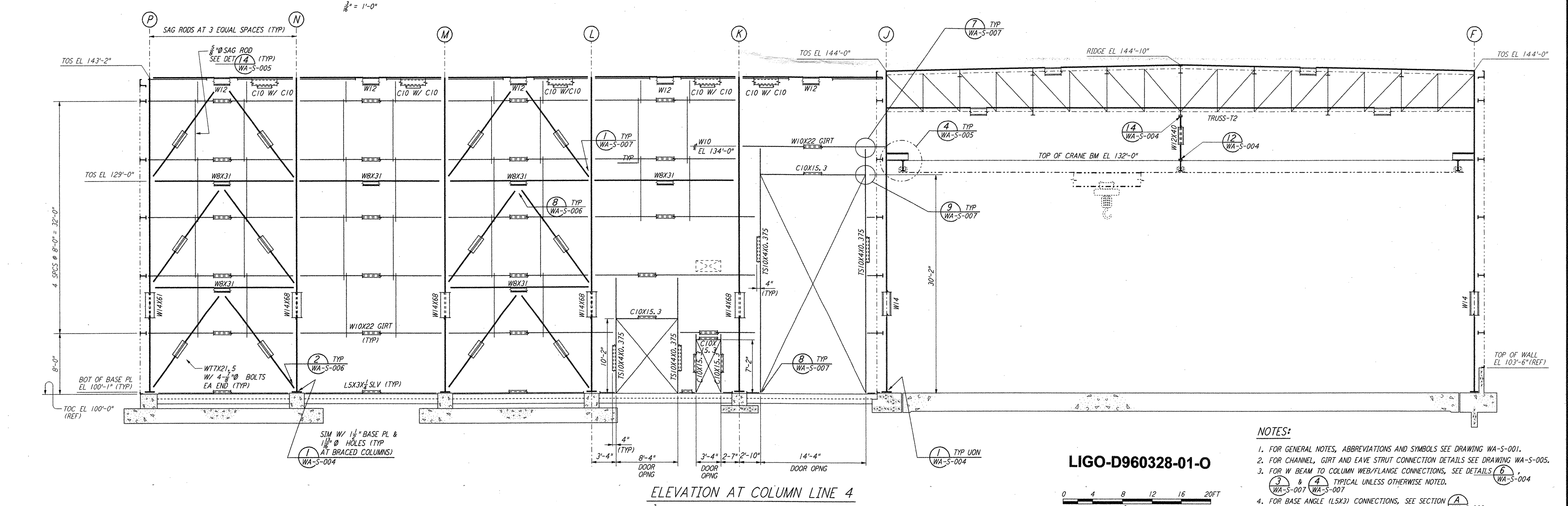
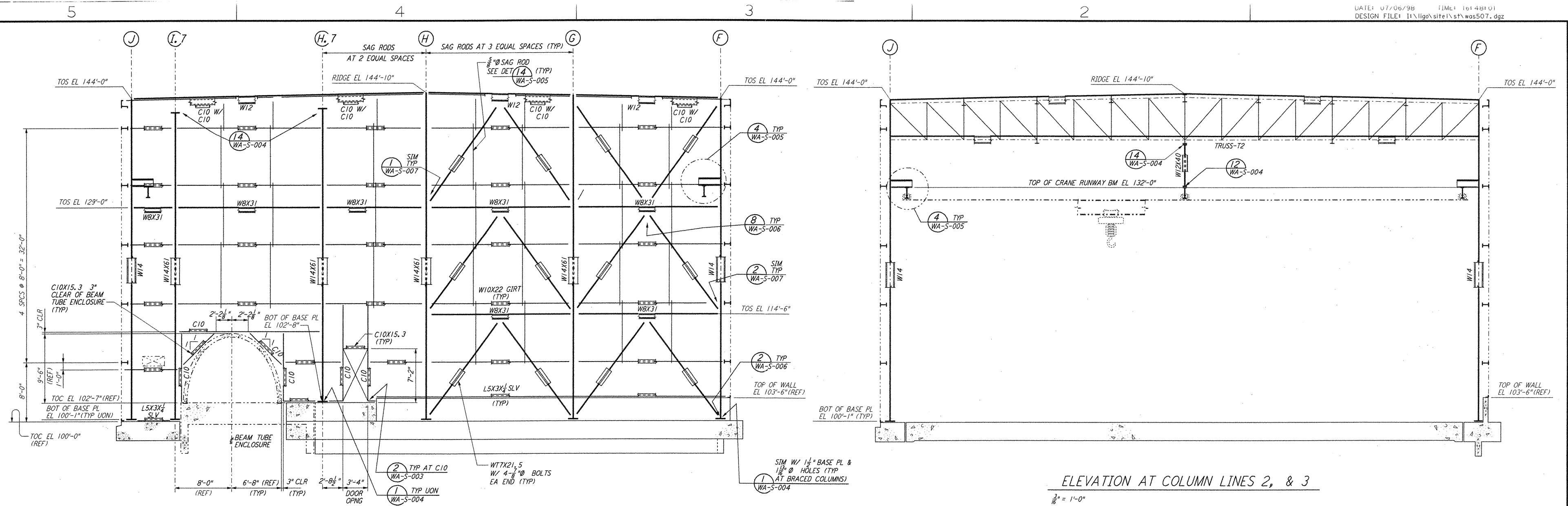
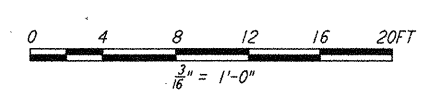


This document and the design it covers are the property of PARSONS. They are loaned only with the borrower's expressed written agreement that they will not be reproduced, copied, loaned, exhibited, or used in any other way, except by written consent from PARSONS to the borrower.



LIGO-D960328-01-0



- NOTES:**
- FOR GENERAL NOTES, ABBREVIATIONS AND SYMBOLS SEE DRAWING WA-S-001.
 - FOR CHANNEL, GIRT AND EAVE STRUT CONNECTION DETAILS SEE DRAWING WA-S-005.
 - FOR W BEAM TO COLUMN WEB/FLANGE CONNECTIONS, SEE DETAILS (6) & (4) WA-S-004 & (3) WA-S-007 TYPICAL UNLESS OTHERWISE NOTED.
 - FOR BASE ANGLE (LSK3) CONNECTIONS, SEE SECTION (A) WA-S-003

NO.	DATE	BY	CHKD	ENGR	PROJ	DESCRIPTION
1	6-15-98	CKT	HP	BP	DP	ISSUED FOR AS-BUILT

ISSUED FOR CONSTRUCTION	DRAWN	MCS	6-24-96
CHECKED	DDM	7-2-96	
ENGINEER	BP	6-28-96	
PROJ	DWM	7-9-96	

AS-BUILT DRAWINGS

PARSONS
 100 WEST WALNUT STREET
 PASADENA, CALIFORNIA

LIGO
 CALIFORNIA INSTITUTE OF TECHNOLOGY
 MASSACHUSETTS INSTITUTE OF TECHNOLOGY

**LASER INTERFEROMETER
 GRAVITATIONAL-WAVE OBSERVATORY
 SITE NO. 1 - HANFORD, WASHINGTON**

TITLE: **STRUCTURAL CORNER STATION LVEA FRAMING ELEVATIONS SHEET 1**

SCALE: AS NOTED

PROJECT NUMBER: PPI50969

PROJECT NUMBER: 8094

SHEET NUMBER: **WA-S-507**