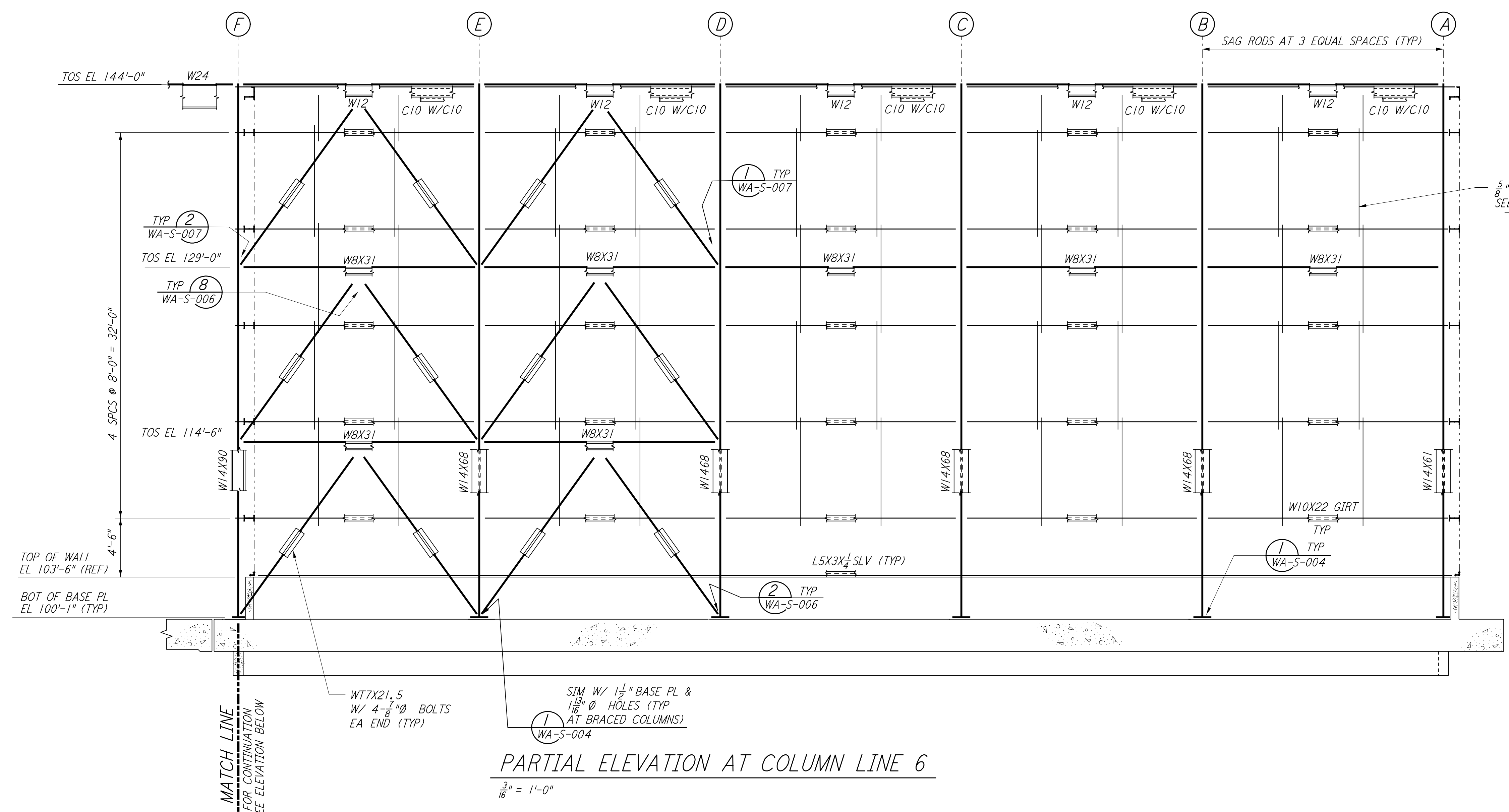
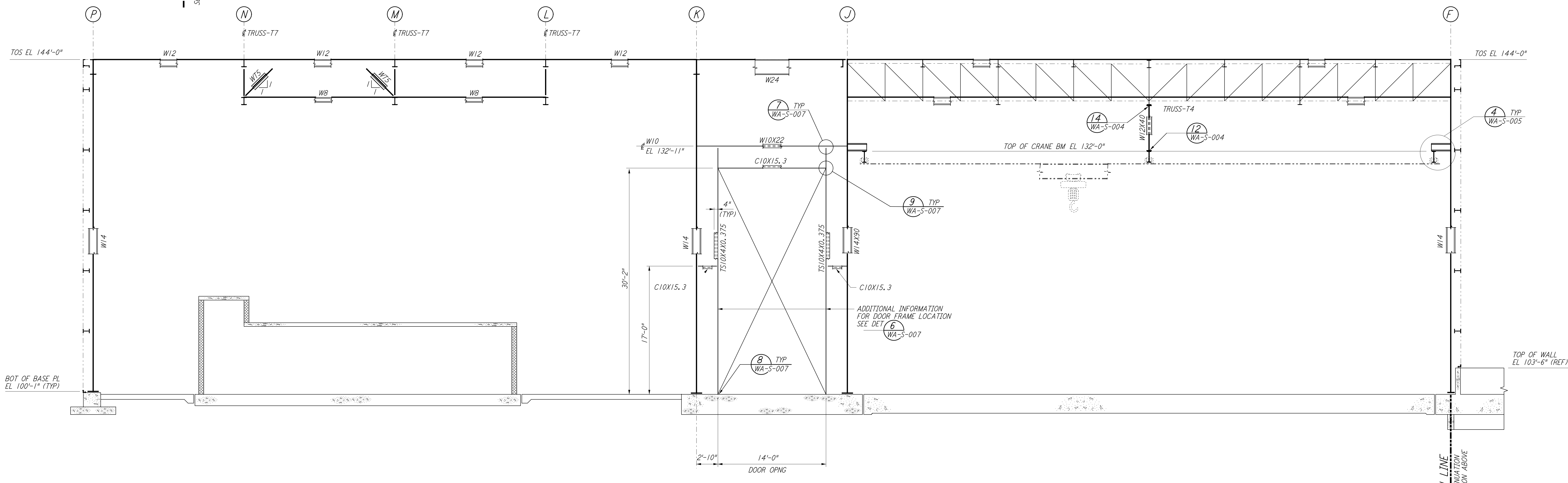


This document and the design it covers are the property of PARSONS. They are loaned only with the borrower's expressed written agreement that they will not be reproduced, copied, loaned, exhibited, or used in any other way, except by written consent from PARSONS to the borrower.

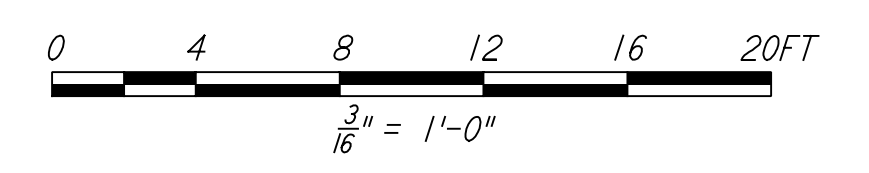


PARTIAL ELEVATION AT COLUMN LINE 6
 $\frac{3}{16}'' = 1'-0''$

NOTE:
 1. FOR NOTES SEE DRAWING WA-5-507.



PARTIAL ELEVATION AT COLUMN LINE 6
 $\frac{3}{16}'' = 1'-0''$



LIGO-D960329-01-0

| NO. | DATE | BY | CHKD | ENGR | PROJ | DESCRIPTION |
|-----|---------|-----|------|------|------|-------------|
| 1 | 6-15-98 | CKT | | | | 6-24-96 |

| ISSUED FOR CONSTRUCTION | | | |
|-------------------------|-----|---------|--|
| DRAWN | MCS | 6-24-96 | |
| CHECKED | DDM | 7-2-96 | |
| ENGINEER | BP | 6-28-96 | |
| PROJ | MDW | 7-9-96 | |

AS-BUILT DRAWINGS

PARSONS
 100 WEST WALNUT STREET
 PASADENA, CALIFORNIA

LIGO
 CALIFORNIA INSTITUTE OF TECHNOLOGY
 MASSACHUSETTS INSTITUTE OF TECHNOLOGY

LASER INTERFEROMETER
 GRAVITATIONAL-WAVE OBSERVATORY
 SITE NO. 1 - HANFORD, WASHINGTON

| | | | |
|---|-----------|----------------|----------------|
| TITLE | SCALE | DRAWING NUMBER | PROJECT NUMBER |
| STRUCTURAL CORNER STATION LVEA FRAMING ELEVATIONS SHEET 2 | AS NOTED | PP150969 | 8094 |
| SHEET NUMBER | REVISIONS | | |
| WA-S-508 | | | |

This drawing was prepared by the LIGO Scientific Collaboration. It is the property of the LIGO Scientific Collaboration and is loaned to you for your use only. It is not to be reproduced, copied, loaned, exhibited, or used in any other way, except by written consent from the LIGO Scientific Collaboration.