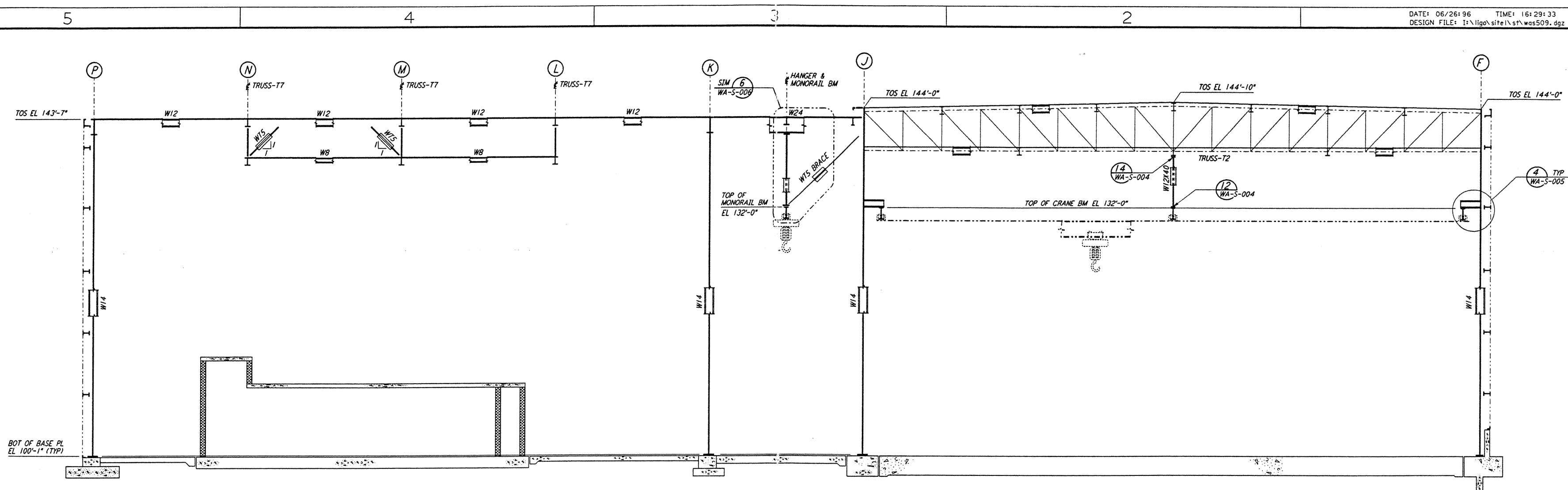
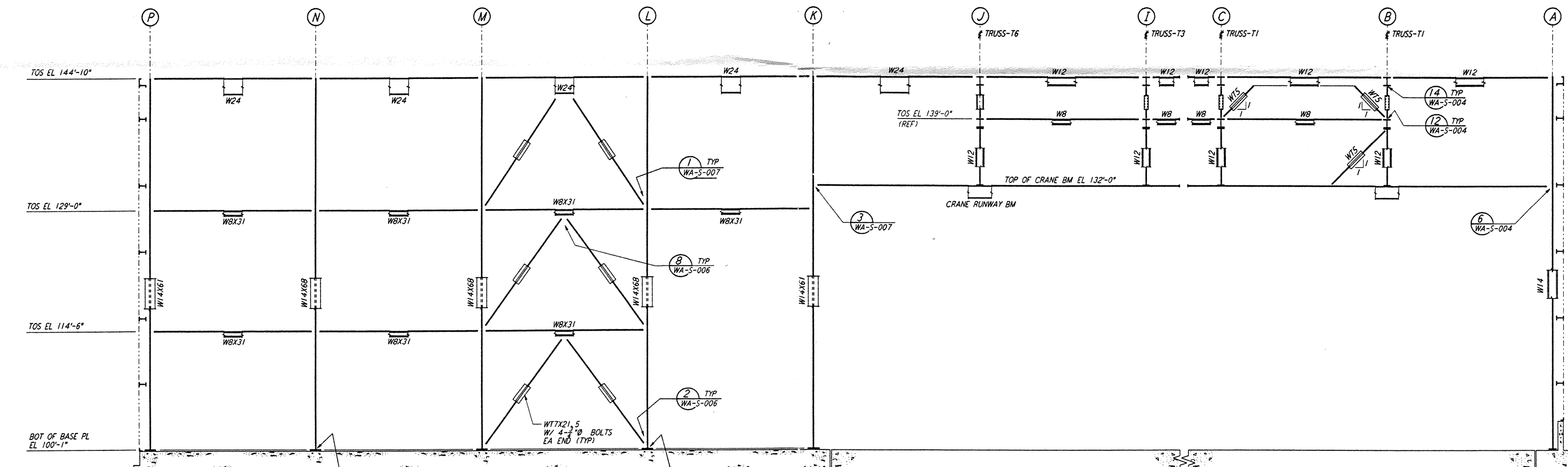


not be reproduced, copied, loaned, exhibited, or used in any other way, except by written consent from PARSONS to the borrower.

This document and the design it covers are the property of PARSONS. They are loaned only with the borrower's expressed written agreement that they will

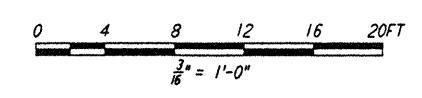


ELEVATION AT COLUMN LINE 5
 $\frac{1}{8}'' = 1'-0''$



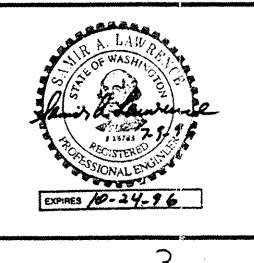
PARTIAL ELEVATION AT COLUMN LINE 8
 $\frac{3}{8}'' = 1'-0''$

NOTE:
 1. FOR NOTES SEE DRAWING WA-S-007.



DRAWING NO.	DESCRIPTION	NO.	DATE	BY	CHKD	ENGR	PROJ	DESCRIPTION

ISSUED FOR CONSTRUCTION			
DRAWN	MCS	6-24-96	
CHECKED		7-2-96	
ENGINEER		6-29-96	
PROJ		7-15-96	



PARSONS
 100 WEST WALNUT STREET
 PASADENA, CALIFORNIA

LIGO
 CALIFORNIA INSTITUTE OF TECHNOLOGY
 MASSACHUSETTS INSTITUTE OF TECHNOLOGY

LASER INTERFEROMETER
 GRAVITATIONAL-WAVE OBSERVATORY
 SITE NO. 1 - HANFORD, WASHINGTON

TITLE	STRUCTURAL CORNER STATION LVEA FRAMING ELEVATIONS SHEET 3	AS NOTED	PP150969	PROJECT NUMBER	8094
SHEET NUMBER	WA-S-509	REVISIONS			