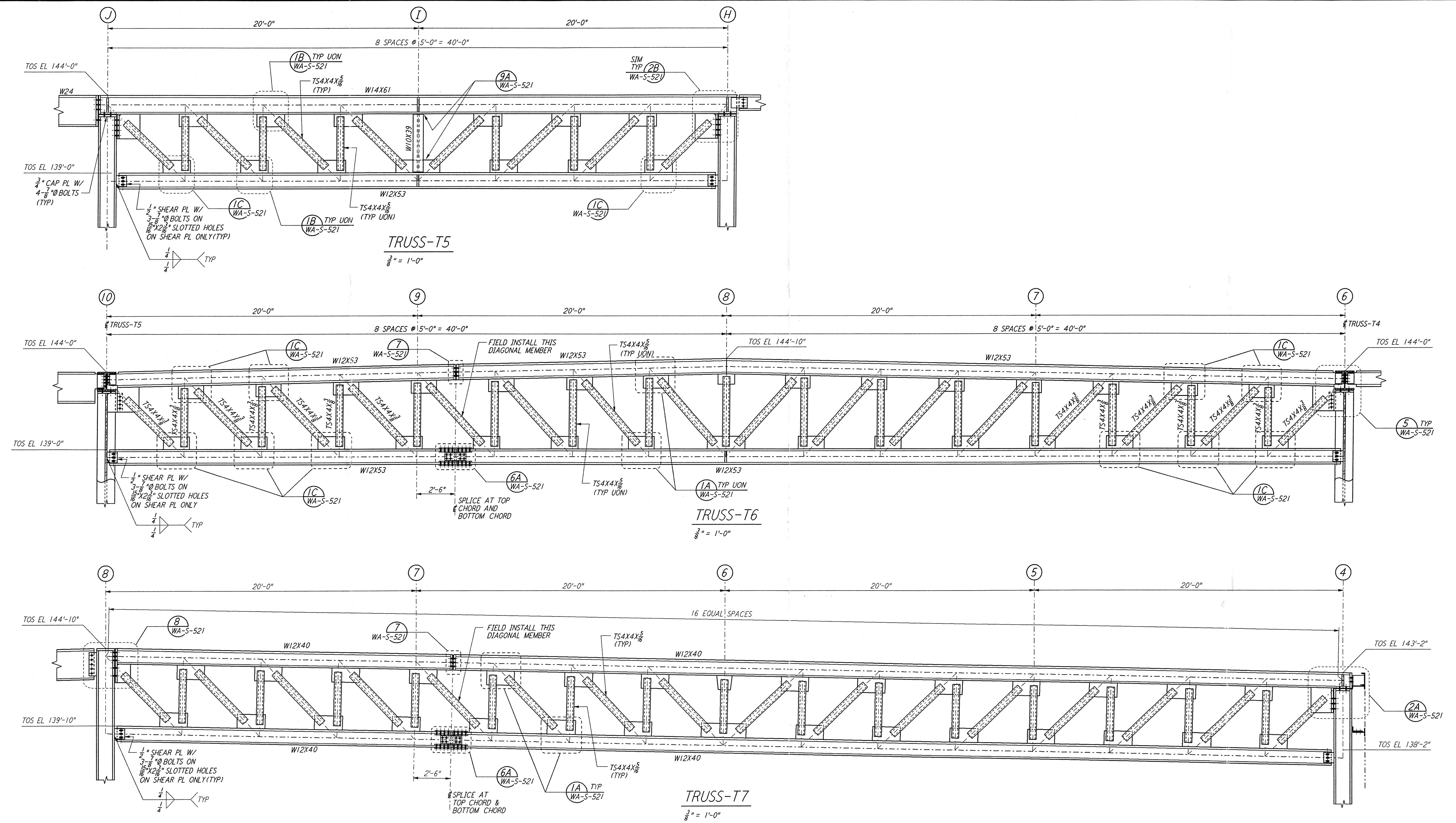
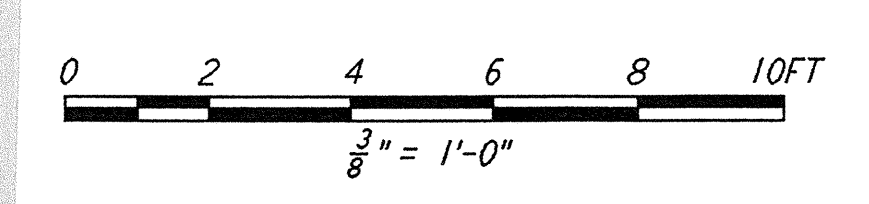


This document and the design it covers are the property of PARSONS. They are loaned only with the borrower's expressed written agreement that they will not be reproduced, copied, loaned, exhibited, or used in any other way, except by written consent from PARSONS to the borrower.



NOTE:
 1. FOR NOTES SEE DRAWING WA-S-517.

Date Received	4-19-96	LIGO	D960339-A-U
TW #	28	Contractor	WA-S-518, Rev. A
Date	4/19/96	Approved	LIGO
TOM #		Approved	LIGO
Date		Approved	LIGO
Gen'l Transmittal		Approved	LIGO
Date		Approved	LIGO



NO.	DATE	BY	CHKD	ENGR	PROJ	DESCRIPTION
A	4-19-96	MCS	DDM	PK		FINAL DESIGN REVIEW & BID

DRAWN	MCS
CHECKED	
ENGINEER	
PROJ	

PARSONS
 100 WEST WALNUT STREET
 PASADENA, CALIFORNIA

LIGO
 CALIFORNIA INSTITUTE OF TECHNOLOGY
 MASSACHUSETTS INSTITUTE OF TECHNOLOGY

LASER INTERFEROMETER
 GRAVITATIONAL-WAVE OBSERVATORY
 SITE NO. 1 - HANFORD, WASHINGTON

TITLE: **STRUCTURAL CORNER STATION LVEA TRUSS ELEVATIONS SHEET 2**

SCALE: AS NOTED

CONTRACT NUMBER: PP150969

PROJECT NUMBER: 8094

SHEET NUMBER: **WA-S-518**

REVISIONS: