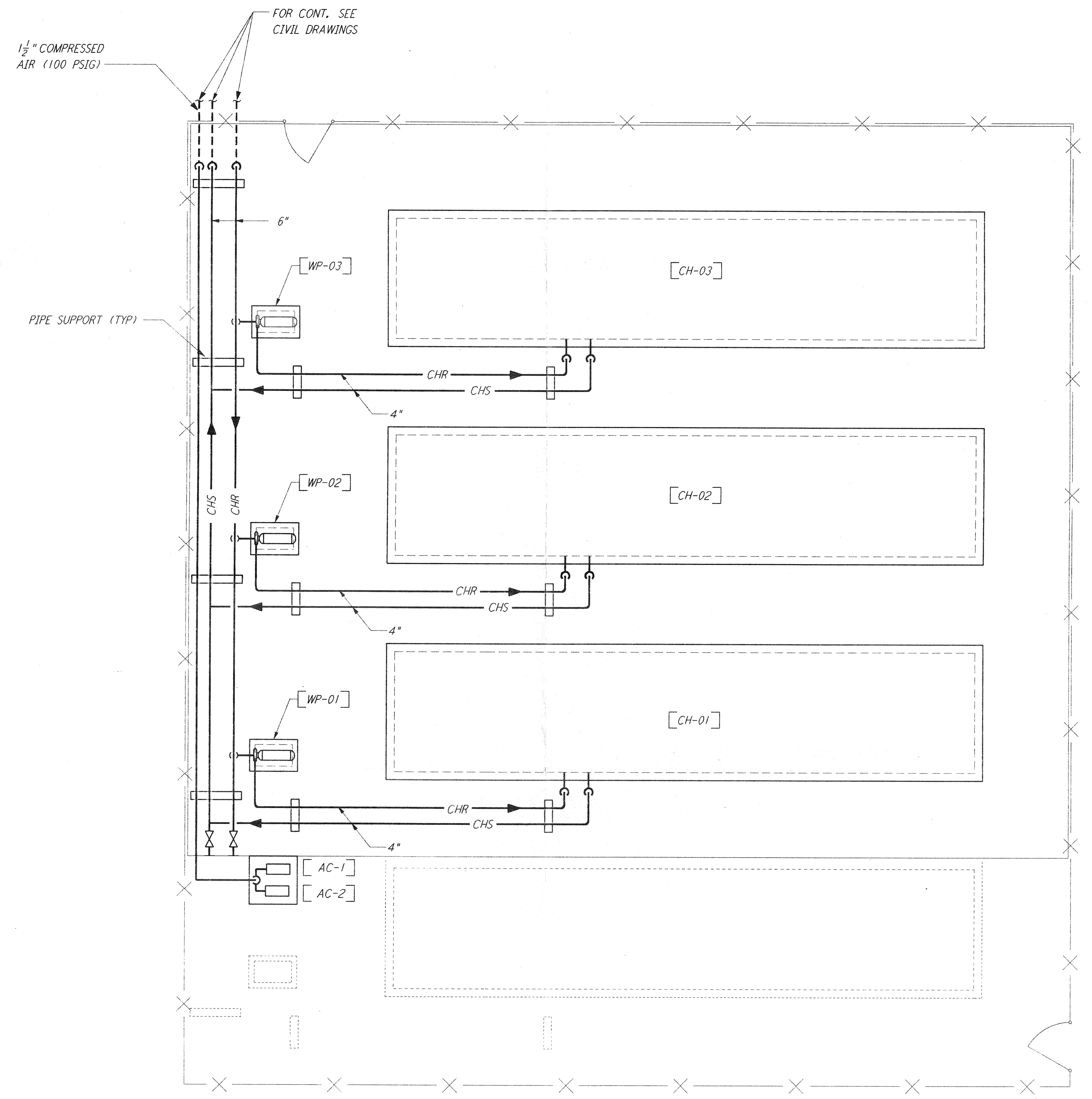
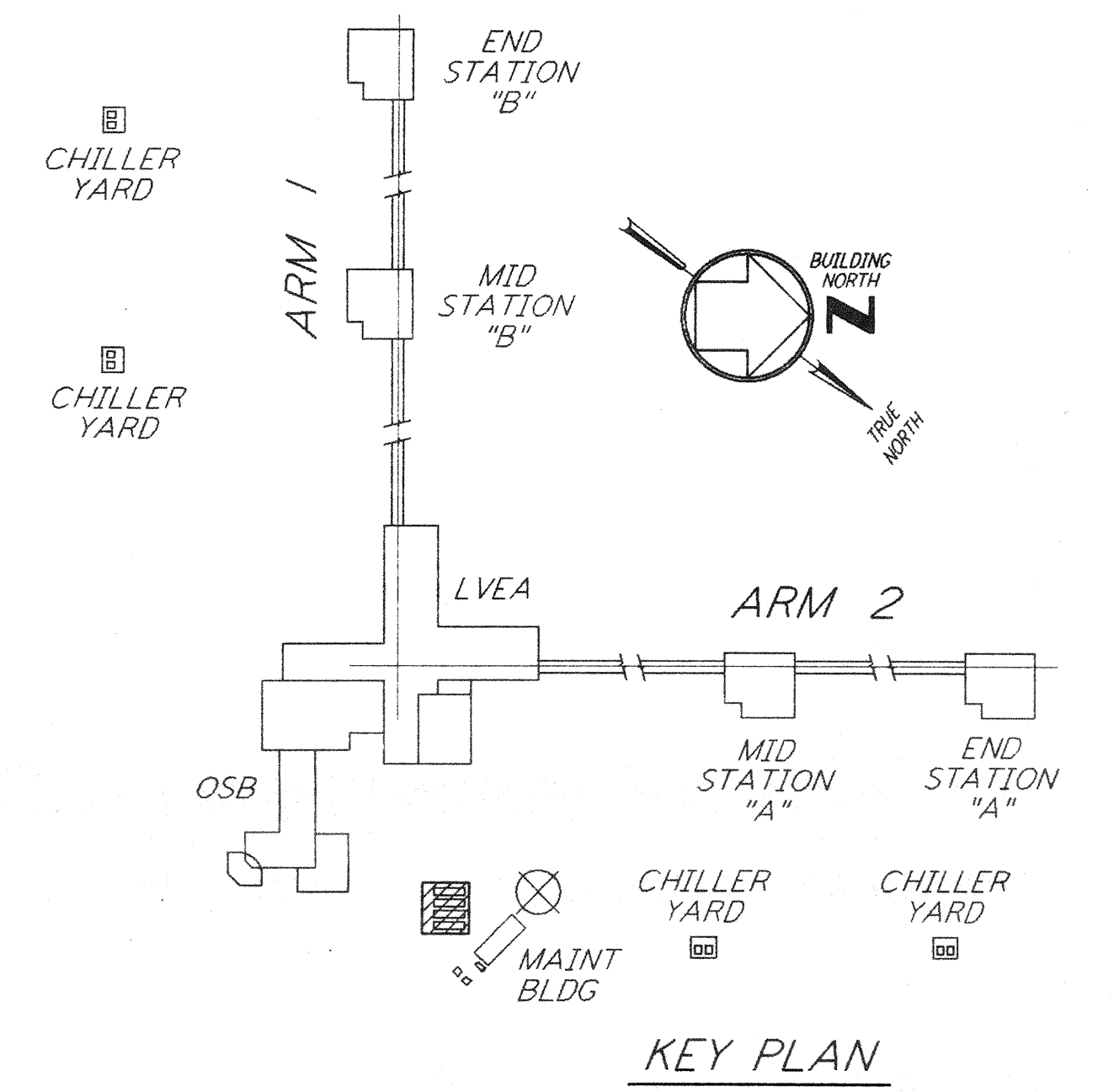


not be reproduced, copied, loaned, exhibited, or used in any other way, except by written consent from PARSONS to the borrower.

This document and the design it covers are the property of PARSONS. They are loaned only with the borrower's expressed written agreement that they will



- NOTES:**
1. FOR LEGEND, ABBREVIATIONS AND GENERAL NOTES SEE SHEET WA-H-001 AND WA-H-002.
 2. MAINTAIN MINIMUM 6'-8" CLEAR HEIGHT UNDER PIPES. FOR PIPE SUPPORT DETAILS SEE STRUCTURAL DRAWING WA-S-407.
 3. PROVIDE FLOOR MOUNTED ELBOW SUPPORT AT THE PUMP SUCTION. CONTRACTOR MAY USE SUCTION DIFFUSER/STRAINER.
 4. REFER TO SPECIFICATIONS FOR PIPE SUPPORT REQUIREMENTS.
 5. SUPPORT PIPING TO ELIMINATE ANY LOADS TRANSMITTED FROM PIPING TO PUMPS AND CHILLERS.
 6. FOR PIPING FLOW DIAGRAM SEE SHEET WA-H-121.
 7. FOR VALVES AND CONTROL COMPONENTS SEE SHEET WA-H-121.
 8. PROVIDE FLEXIBLE CONNECTOR ON THE COMPRESSED AIR DISCHARGE.
 9. FOR CHILLERS AND PUMPS PIPING DETAILS SEE SHEETS WA-H-411 AND WA-H-412.
 10. FOR EXACT LOCATION OF THE CHILLERS AND PUMPS SEE CIVIL DRAWINGS.

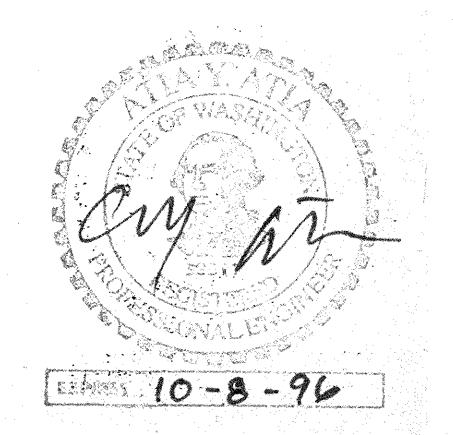


CORNER STATION CHILLER YARD PLAN
 1/4" = 1'-0"

0 4 8 12 16 FT
 1/4" = 1'-0"

| NO. | DATE | BY | CHKD | ENGR | PROJ | DESCRIPTION |
|-----|------|----|------|------|------|-------------|
| | | | | | | |
| | | | | | | |
| | | | | | | |
| | | | | | | |

ISSUED FOR CONSTRUCTION
 DRAWN CLP 8-24-96
 CHECKED JMC 7/3/96
 ENGINEER AA 7/3/96
 PROJ JWW 7/18/96



PARSONS
 100 WEST WALNUT STREET
 PASADENA, CALIFORNIA

LIGO
 CALIFORNIA INSTITUTE OF TECHNOLOGY
 MASSACHUSETTS INSTITUTE OF TECHNOLOGY

LASER INTERFEROMETER
 GRAVITATIONAL-WAVE OBSERVATORY
 SITE NO. 1 - HANFORD, WASHINGTON

TITLE: HVAC CORNER STATION CHILLERS YARD FLOOR PLAN

SCALE: AS NOTED
 SHEET NUMBER: PP150969
WA-H-115

PROJECT NUMBER: 8094

LIGO-D960352-00-0
 LIGOWAF 3.BDR