

**MAINTENANCE BUILDING FLOOR PLAN**  
 1/4" = 1'-0"

**NOTES:**

1. FOR LEGEND, ABBREVIATIONS AND GENERAL NOTES SEE SHEETS WA-H-001 AND WA-H-002.

**SEQUENCE OF OPERATION:**

**MAINTENANCE ROOM:**

- UPON A SIGNAL FROM THE CENTRAL CONTROL SYSTEM THE AIR HANDLING UNIT (AH-05) SHALL START. THE DDC CONTROL SHALL PERFORM THE FOLLOWING:
- A. THE DDC CONTROLS SHALL MODULATE THE CONTROL DAMPERS ON THE OUTSIDE AIR AND THE RETURN AIR DUCTS TO MAINTAIN THE ROOM TEMPERATURE AT 72°F AND MAINTAIN 750 CFM OF OUTSIDE AIR MINIMUM.
  - B. WHEN THE ROOM TEMPERATURE DROPS BELOW 68°F THE DDC CONTROL SHALL ACTIVATE THE ELECTRIC DUCT HEATER (HC-14) TO MAINTAIN THE ROOM AT 68°F.
  - C. AFTER BUSINESS HOURS THE DDC CONTROLS SHALL CLOSE OFF THE OUTSIDE AIR DAMPER AND FULLY OPEN THE RETURN AIR DAMPER AND MAINTAIN THE ROOM TEMPERATURE AT 65°F.
  - D. IF THE ROOM TEMPERATURE DROPS BELOW 50°F, THE DDC CONTROLS SHALL REPORT AN ALARM SIGNAL TO FACILITY CONTROL AND MONITORING SYSTEM AT THE CORNER STATION.

**FIRE PUMP ROOM:**

- A. THE PACKAGED CONTROLS ON THE ELECTRIC CONVECTOR SHALL MAINTAIN THE ROOM TEMPERATURE AT 60°F.
- B. IF THE ROOM TEMPERATURE RISES ABOVE 104°F THE DDC CONTROLS SHALL OPEN THE GRAVITY VENTILATION DAMPERS. THE GRAVITY VENTILATION DAMPERS SHALL CLOSE WHEN THE ROOM TEMPERATURE DROPS BELOW 95°F.
- C. IF THE ROOM TEMPERATURE RISES TO 110°F OR DROPS BELOW 50°F, THE DDC CONTROLS SHALL REPORT AN ALARM SIGNAL TO FACILITY CONTROL AND MONITORING SYSTEM AT THE CORNER STATION.

**DOMESTIC WATER PUMP ROOM:**

SAME AS FIRE PUMP ROOM.

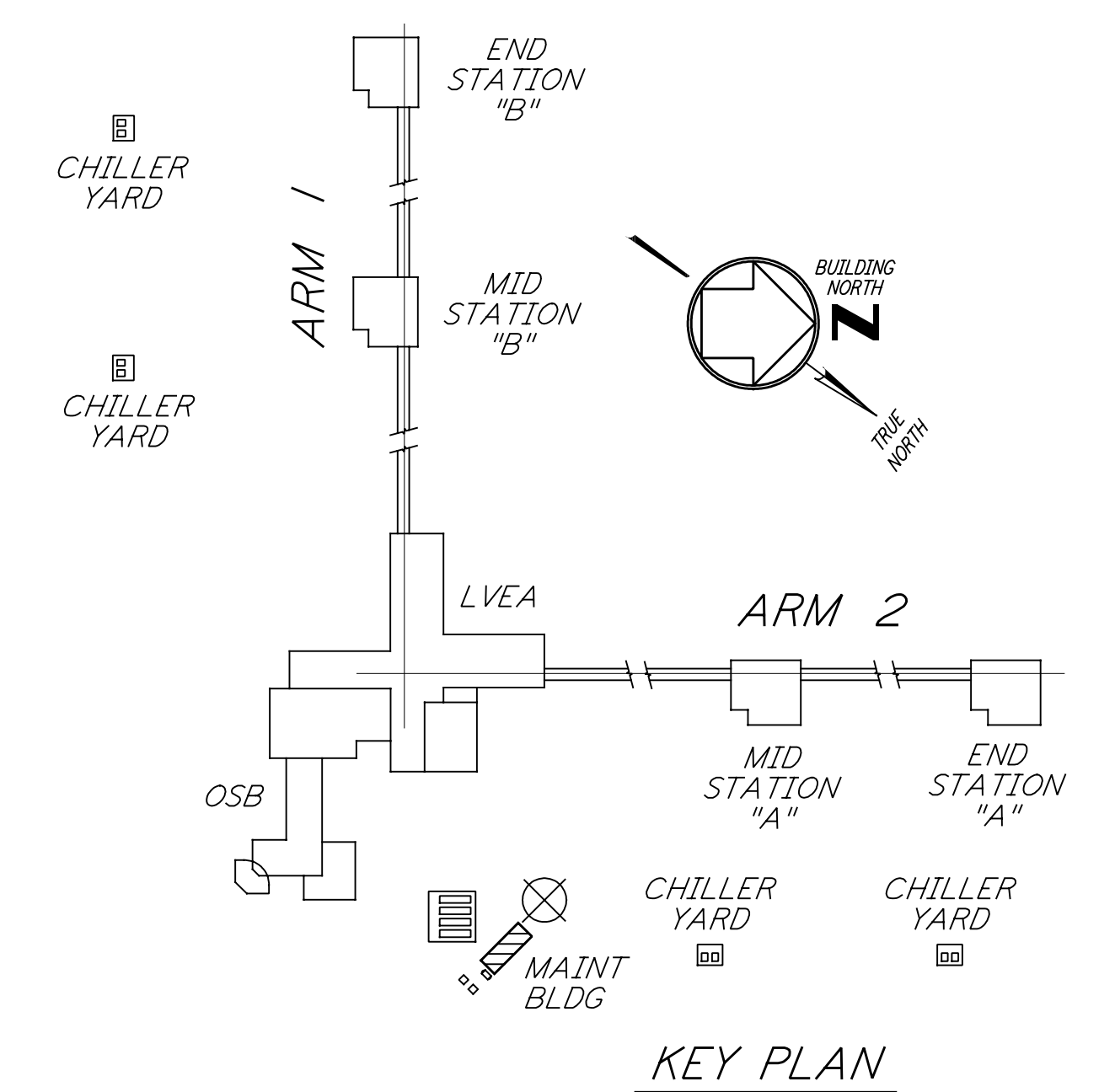
**ELECTRICAL ROOM:**

SAME AS FIRE PUMP ROOM.

not be reproduced, copied, loaned, exhibited, or used in any other way, except by written consent from PARSONS to the borrower.

This document and the design it covers are the property of PARSONS. They are loaned only with the borrower's expressed written agreement that they will

SYSTEM, APPARATUS, OR AREA POINT DESCRIPTION	INPUT/OUTPUT SUMMARY FOR MAINTENANCE BUILDING														SUPPLEMENTARY NOTES																					
	INPUTS						OUTPUTS				SYSTEM FEATURES					GENERAL																				
	ANALOG			BINARY			DIGITAL		ANALOG		ALARMS		PROGRAMS																							
MEASURED	CALCULATED		STATUS	FILTER	SMOKE	FREEZE	AIR FLOW	METER	OFF-ON	OFF-AUTO-ON	OFF-HI-LO	OPEN-CLOSE	MULTI-STAGE	DAMPER POSITION	VALVE POSITION	SET POINT ADJUSTMENT	MANE POSITION	SCR CONTROL	HI ANALOG	LOW ANALOG	HI BINARY	LOW BINARY	PROOF	TIME SCHEDULING	DEMAND LIMITING	DUTY CYCLE	START/STOP OPTION	ENTHALPY OPTION	SMOKE CNT	TREND	ALARM INSTRUCT	MAINT WK ORD	COLOR GRAPHIC			
AIR HANDLING UNIT, AH-05																																				PROVIDE NIGHT TIME SETBACK
HEATING COIL, HC-14																																				
CONNECTOR, HT-01																																				
CONNECTOR, HT-02																																				
CONNECTOR, HT-03																																				
CONNECTOR, HT-04																																				
ROOM TEMPERATURE (195)																																				
ROOM TEMPERATURE (194)																																				
ROOM TEMPERATURE (196)																																				
ROOM TEMPERATURE (192)																																				
GRAVITY DAMPERS (RM 195)																																				
GRAVITY DAMPERS (RM 196)																																				
GRAVITY DAMPERS (RM 192)																																				
FLOOR PLAN																																				



0 4 8 12 16 FT  
 1/4" = 1'-0"

**LIGO-D960353-01-0**

ISSUED FOR CONSTRUCTION	CLP	6-24-96
DRAWN		
CHECKED		
ENGINEER		
PROJ		
<b>AS-BUILT DRAWINGS</b>		
ISSUED FOR AS-BUILT		
NO.	DATE	BY
1	5-15-98	CP
DRAWING NO.	DESCRIPTION	

**PARSONS**  
 100 WEST WALNUT STREET  
 PASADENA, CALIFORNIA

**LIGO**  
 CALIFORNIA INSTITUTE OF TECHNOLOGY  
 MASSACHUSETTS INSTITUTE OF TECHNOLOGY

LASER INTERFEROMETER  
 GRAVITATIONAL-WAVE OBSERVATORY  
 SITE NO. I - HANFORD, WASHINGTON

**HVAC CORNER STATION MAINTENANCE BUILDING FLOOR PLAN**

AS NOTED PPI50969 8094  
**WA-H-116**

The Prop. 3 (P) 09/03/98 09:02:16 PARSONS\PROJECTS\980903\980903.DWG