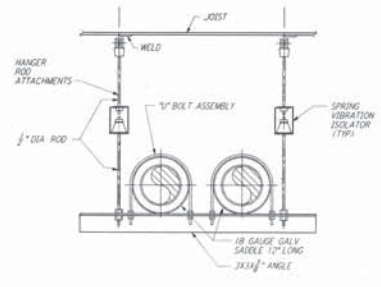
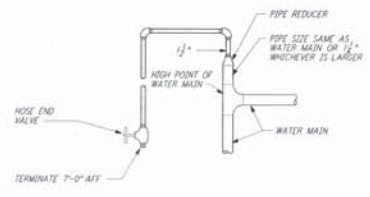


TYPICAL BASE ELBOW SUPPORT 1 REF  
 NTS WA-H-412

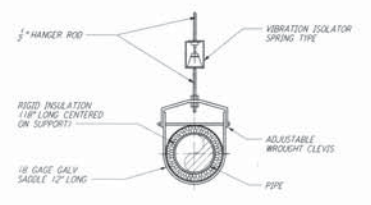


PIPE HANGER - TRAPEZE 2 REF  
 NTS WA-H-412



NOTE: LOCATE AT THE HIGHEST POINT OF THE CHILLED WATER SYSTEM.

MANUAL AIR VENT 3 REF  
 NTS WA-H-412



NOTE: MATCH OD OF INSULATION. MATCH OD OF PIPE FOR UNINSULATED LINES.

PIPE HANGER - SINGLE PIPE 4 REF  
 NTS WA-H-412

NOTES:  
 1. FOR LEGENDS, ABBREVIATIONS AND GENERAL NOTES SEE SHEETS WA-H-001 AND WA-H-002.

This document and the design it covers are the property of PARSONS. They are loaned only with the borrower's expressed written agreement that they will not be reproduced, copied, loaned, exhibited, or used in any other way, except by written consent from PARSONS to the borrower.

NO.	DATE	BY	CHKD	ENGR	PRJG	DESCRIPTION

ISSUED FOR CONSTRUCTION	CLP	6-24-96
DRAWN	CLP	7/3/96
CHECKED	AA	7/3/96
ENGINEER	AA	7/3/96
PROJG	1040	312252



**PARSONS**  
 100 WEST WALNUT STREET  
 PASADENA, CALIFORNIA

**LIGO**  
 CALIFORNIA INSTITUTE OF TECHNOLOGY  
 MASSACHUSETTS INSTITUTE OF TECHNOLOGY

LASER INTERFEROMETER  
 GRAVITATIONAL-WAVE OBSERVATORY  
 SITE NO. 1 - HANFORD, WASHINGTON

TITLE	NONE	PP150969	8094
HVAC DETAILS SHEET 2		<b>WA-H-412</b>	

LIGO-0960371-00-0