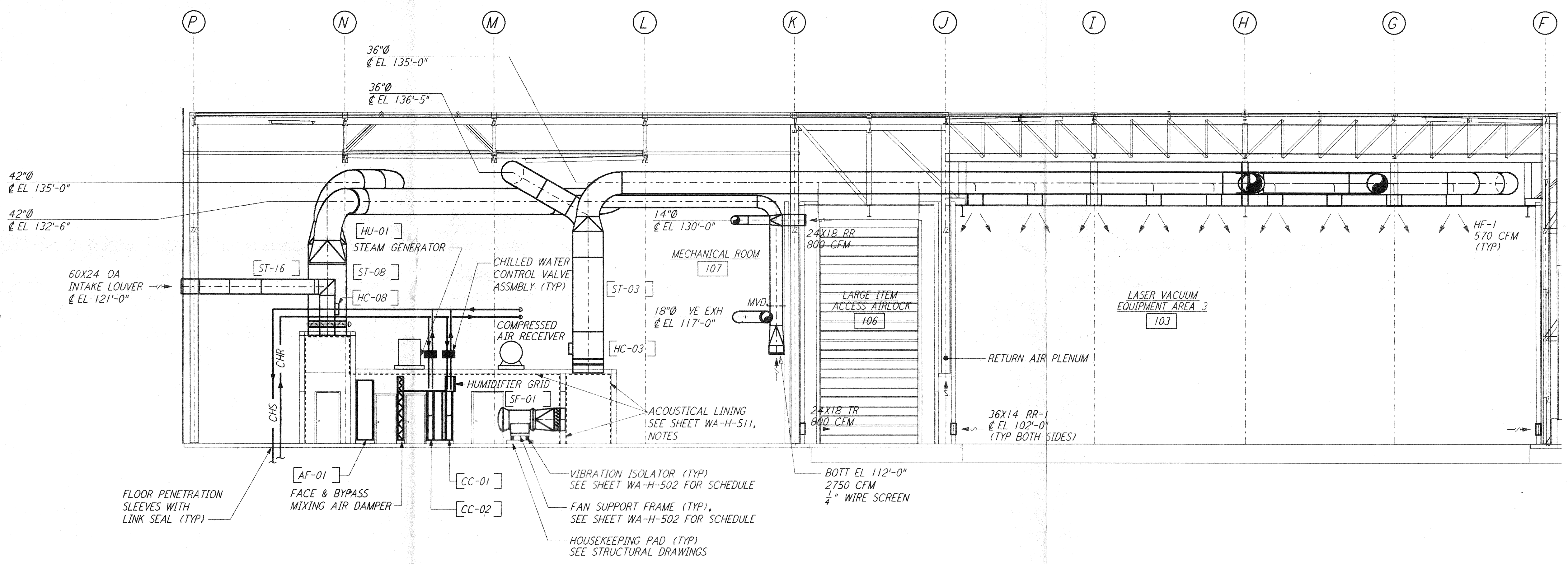


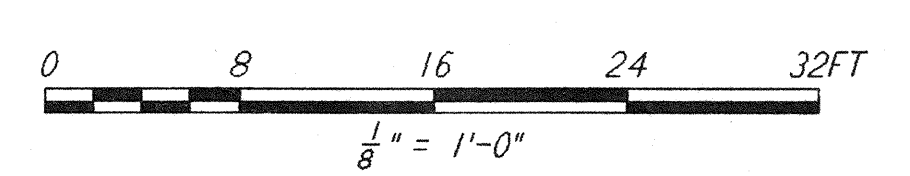
not be reproduced, copied, loaned, exhibited, or used in any other way, except by written consent from PARSONS to the borrower.

This document and the design it covers are the property of PARSONS. They are loaned only with the borrower's expressed written agreement that they will



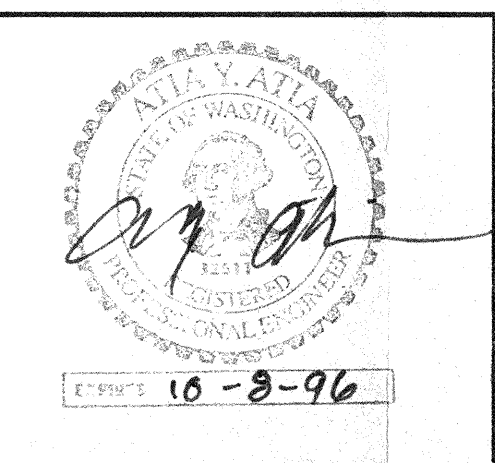
SECTION **B** REF
 $\frac{1}{8}'' = 1'-0''$ WA-H-552 WA-H-511

- NOTES:**
1. FOR LEGEND, ABBREVIATIONS AND GENERAL NOTES SEE SHEET WA-H-001 AND WA-H-002.
 2. SEE SHEET WA-H-551 FOR APPLICABLE NOTES.
 3. PERFORATED DUCT LINER INSIDE THE SUPPLY AIR PLENUM OF AH-01 AND AH-02 WILL BE CORRUGATED TYPE.



NO.	DATE	BY	CHKD	ENGR	PROJ	DESCRIPTION

ISSUED FOR CONSTRUCTION	CLP	6-24-96
DRAWN	AA	7/3/96
CHECKED	AA	7/3/96
ENGINEER	AA	7/3/96
PROJ	YWD	7/2/96



PARSONS

100 WEST WALNUT STREET
 PASADENA, CALIFORNIA

LIGO

CALIFORNIA INSTITUTE OF TECHNOLOGY
 MASSACHUSETTS INSTITUTE OF TECHNOLOGY

LASER INTERFEROMETER
 GRAVITATIONAL-WAVE OBSERVATORY
 SITE NO. 1 - HANFORD, WASHINGTON

SCALE	CONTRACT NUMBER	PROJECT NUMBER
AS NOTED	PP150969	8094
SHEET NUMBER	REVISIONS	
WA-H-552		

LIGO-D960387-00-0