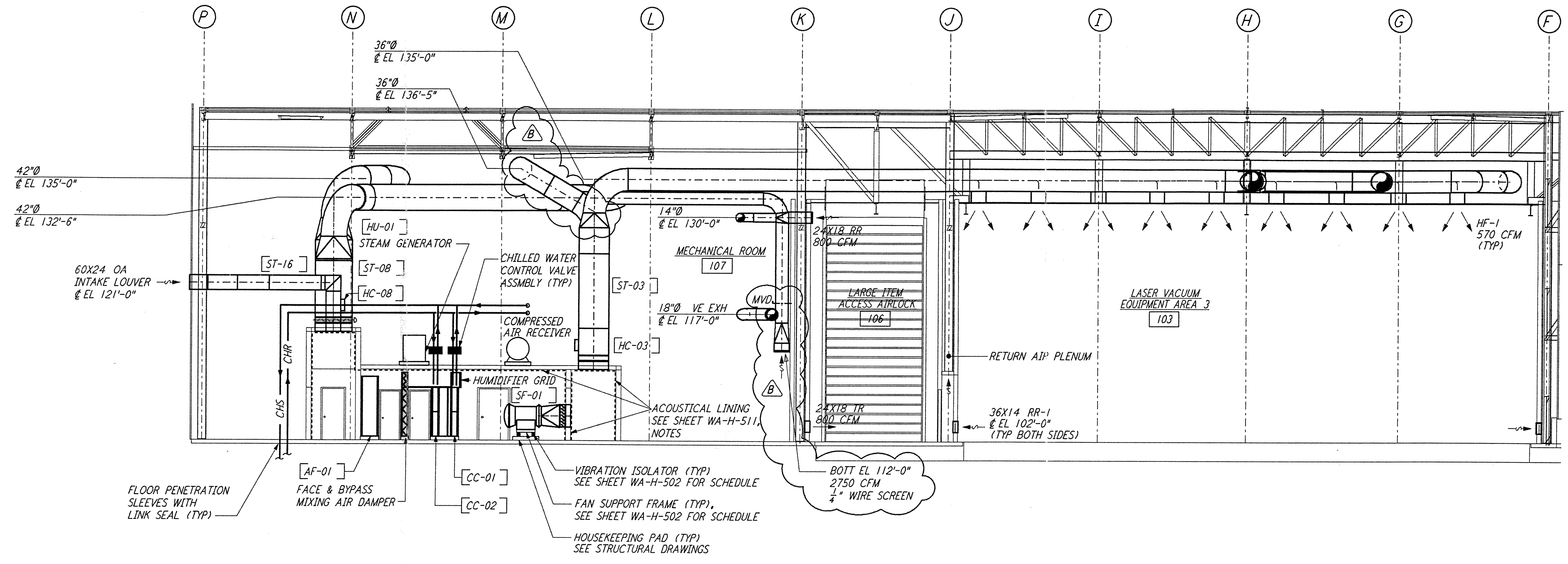


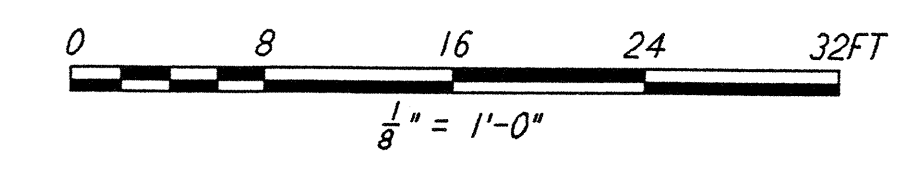
not be reproduced, copied, loaned, exhibited, or used in any other way, except by written consent from PARSONS to the borrower.

This document and the design it covers are the property of PARSONS. They are loaned only with the borrower's expressed written agreement that they will



SECTION B REF  
 $\frac{1}{8}'' = 1'-0''$  WA-H-552 WA-H-511

- NOTES:**
1. FOR LEGEND, ABBREVIATIONS AND GENERAL NOTES SEE SHEET WA-H-001 AND WA-H-002.
  2. SEE SHEET WA-H-551 FOR APPLICABLE NOTES.
  3. PERFORATED DUCT LINER INSIDE THE SUPPLY AIR PLENUM OF AH-01 AND AH-02 WILL BE CORRUGATED TYPE.



NO.	DATE	BY	CHKD	ENGR	PROJ	DESCRIPTION
B	5-22-96	CLP	MM	AA	TDM	BID ADDENDUM #2
A	4-19-96	CLP	ME	AA	TDM	FINAL DESIGN REVIEW & BID

DRAWN	CLP
CHECKED	
ENGINEER	
PROJ	

**PARSONS**

100 WEST WALNUT STREET  
 PASADENA, CALIFORNIA

**LIGO**

CALIFORNIA INSTITUTE OF TECHNOLOGY  
 MASSACHUSETTS INSTITUTE OF TECHNOLOGY

LASER INTERFEROMETER  
 GRAVITATIONAL-WAVE OBSERVATORY  
 SITE NO. 1 - HANFORD, WASHINGTON

TITLE	SCALE	CONTRACT NUMBER	PROJECT NUMBER
HVAC CORNER STATION SECTIONS SHEET 2	AS NOTED	PP150969	8094
SHEET NUMBER		REVISIONS	
<b>WA-H-552</b>		B	