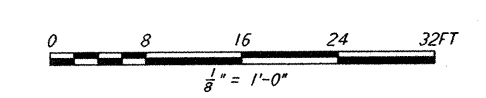
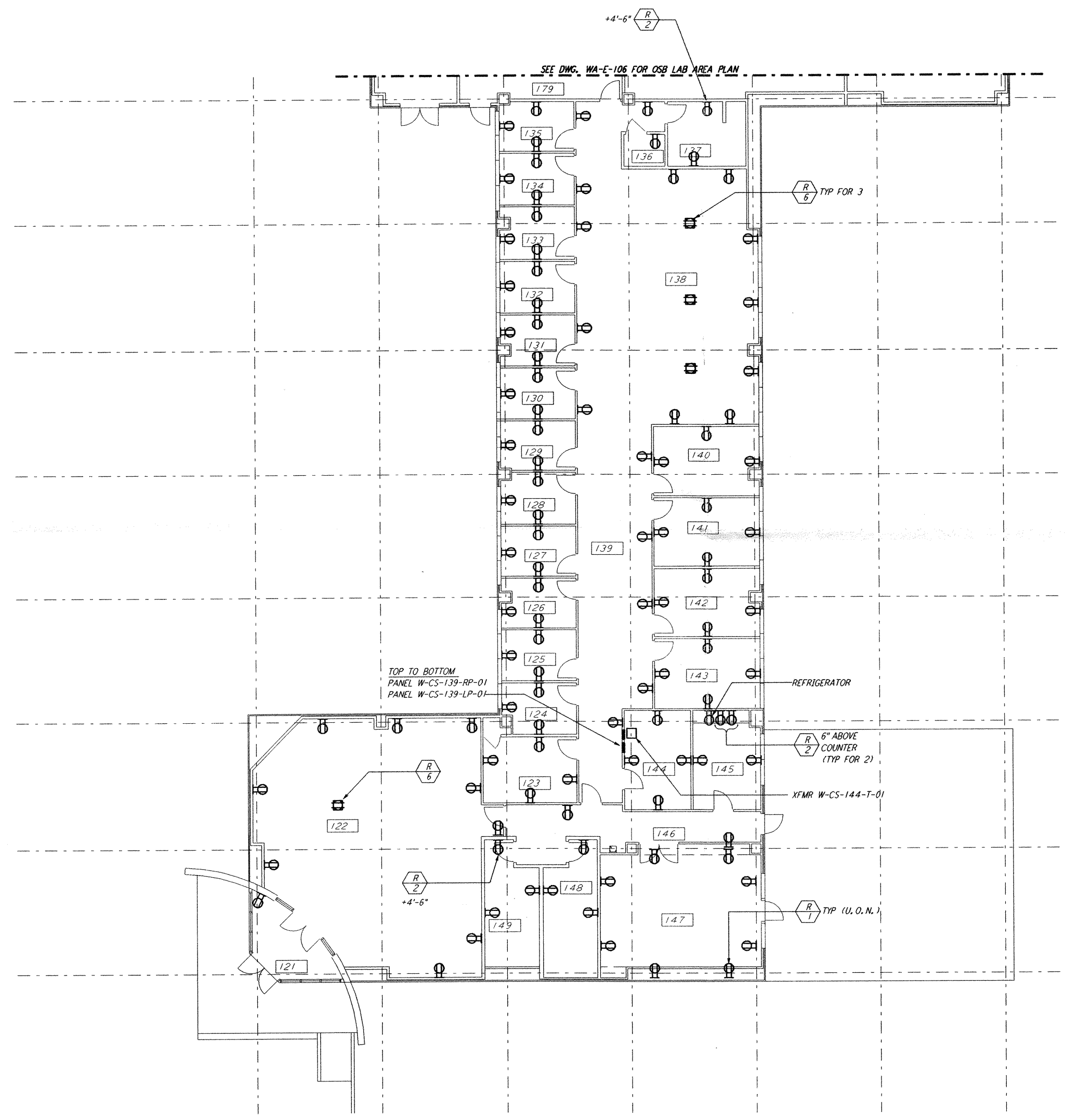
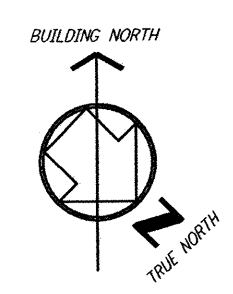


**NOTES:**  
 1. FOR GENERAL NOTES, SEE DWG. WA-E-101.



not be reproduced, copied, loaned, exhibited, or used in any other way, except by written consent from PARSONS to the borrower.

This document and the design it covers are the property of PARSONS. They are loaned only with the borrower's expressed written agreement that they will

NO.	DATE	APRD BY	DESCRIPTION OF REVISION
9			
8			
7			
6			
5			
4			
3			
2			
1			

ISSUE	NO.	DATE	APRD BY	ISSUED FOR
J		10-31-95		
H				
G				
F				
E				
D				
C				
B				
A	10-31-95	TDM		PRELIMINARY DESIGN REVIEW

DATE	10-31-95
DRAWN	J. G.
CHECKED	
ENGINEER	
PROJ MGR	

**PARSONS**  
 100 WEST WALNUT STREET  
 PASADENA, CALIFORNIA

**LIGO**  
 CALIFORNIA INSTITUTE OF TECHNOLOGY  
 MASSACHUSETTS INSTITUTE OF TECHNOLOGY

LASER INTERFEROMETER  
 GRAVITATIONAL-WAVE OBSERVATORY  
 SITE NO. 1 - HANFORD, WASHINGTON

TITLE: **ELECTRICAL CORNER STATION OSB OFFICE AREA POWER PLAN**

SCALE: AS NOTED CONTRACT NUMBER: PPI50969 PROJECT NUMBER: 8094

SHEET NUMBER: **WA-E-105**

Tue Oct 31 00:55:01 1995 s3-v18b2 J:\PLOTS\QUEUES\18B2\EE105A.PRF