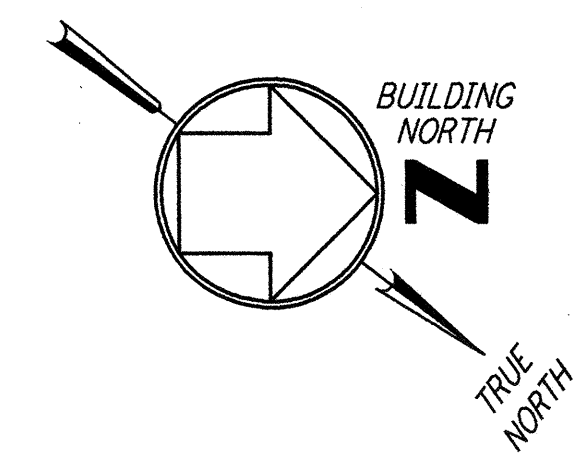
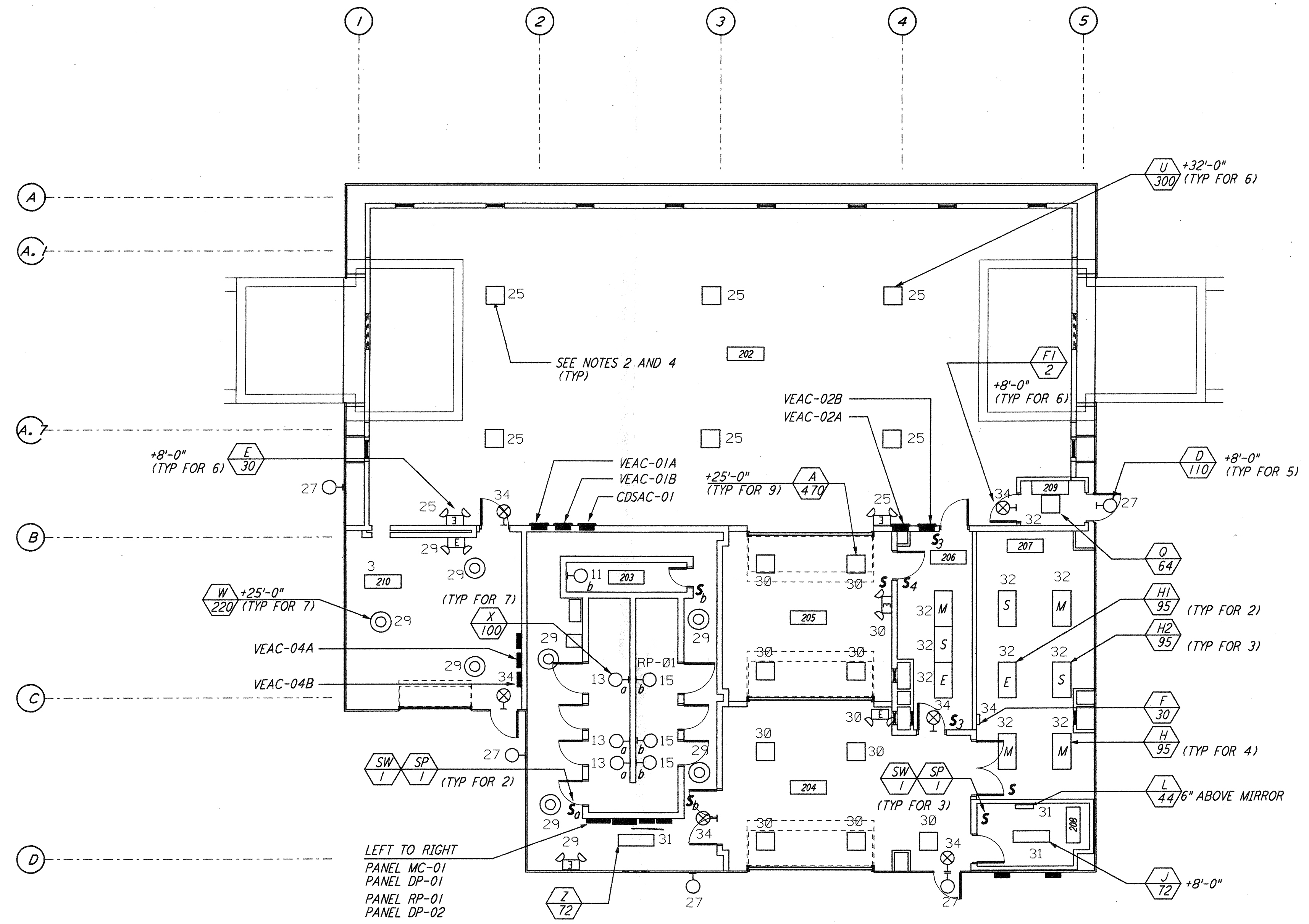


NOTES:

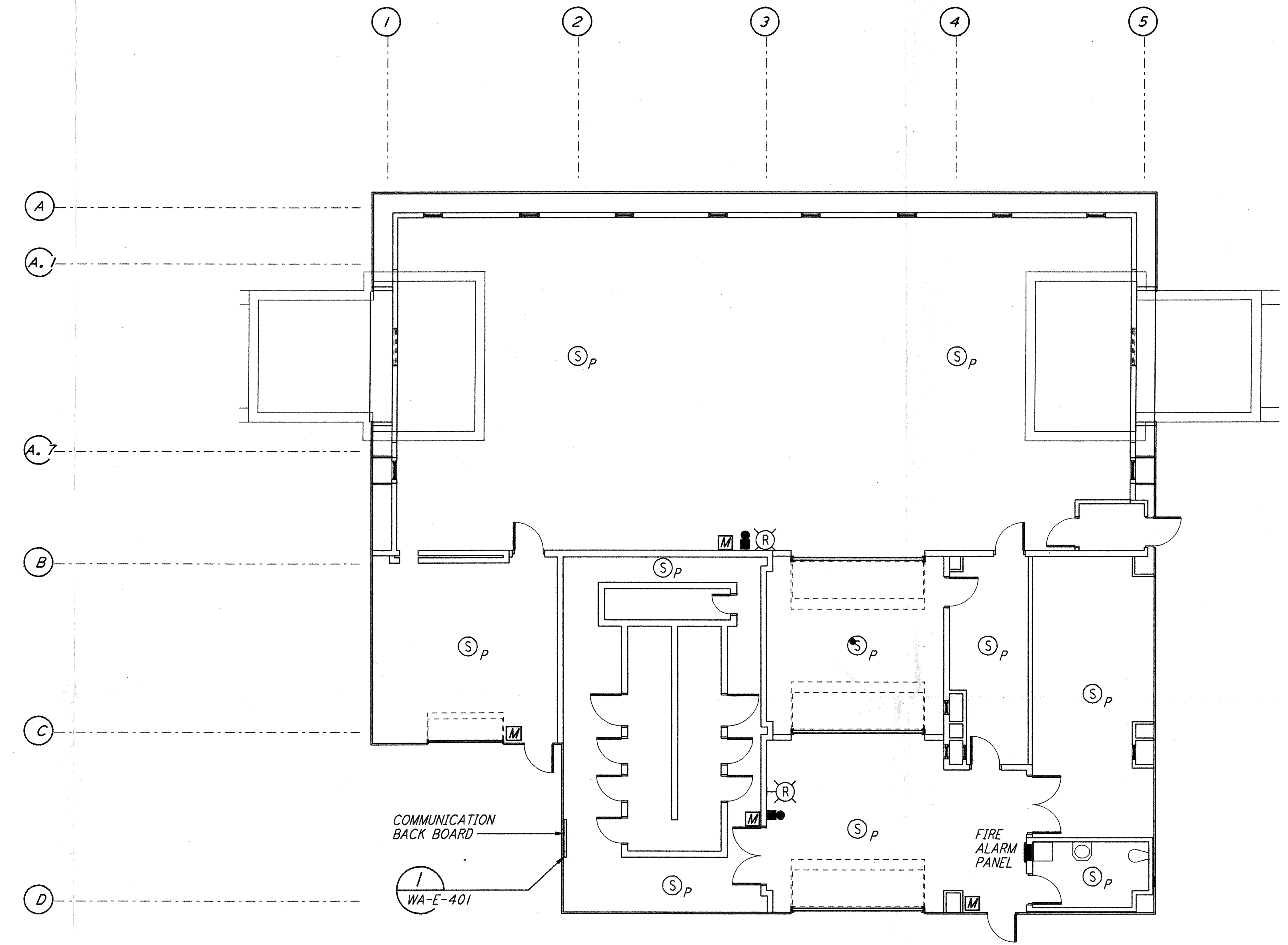
1. FOR GENERAL NOTES SEE DRAWINGS WA-E-102.
2. ALL CIRCUITS SHOWN ON THIS DRAWING ARE FROM PANEL DP-02 UNLESS OTHERWISE NOTED.
3. FOR PANEL SCHEDULES SEE DRAWING WA-E-205 AND WA-E-206.
4. FOR FIXTURE LOCATION SEE ARCHITECTURAL REFLECTED CEILING PLAN ON DRAWING WA-A-221.
5. FOR FIRE DETECTION NOTES SEE DRAWING WA-E-110.



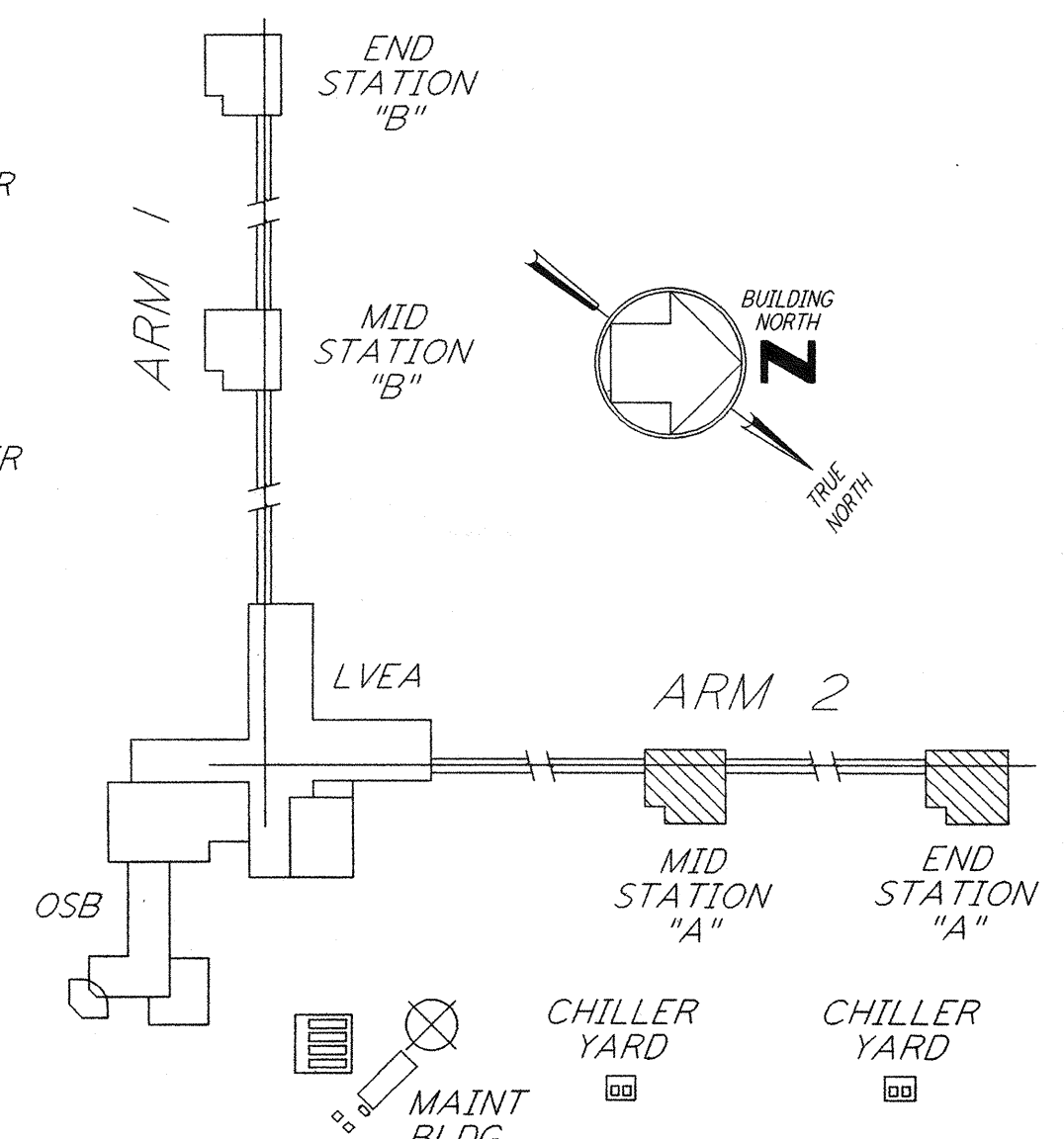
This document and the design it covers are the property of PARSONS. They are loaned only with the borrower's expressed written agreement that they will not be reproduced, copied, loaned, exhibited, or used in any other way, except by written consent from PARSONS to the borrower.



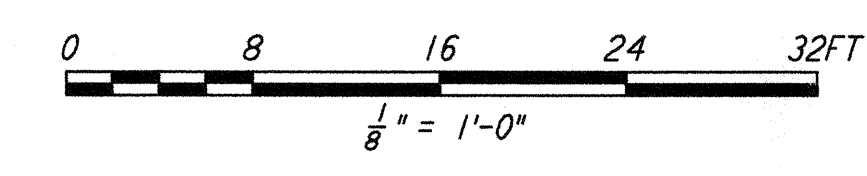
LIGHTING PLAN



COMMUNICATIONS AND FIRE DETECTION PLAN



KEY PLAN



LIGO-D960411-02-0

NO.	DATE	BY	CHKD	ENGR	PROJ	DESCRIPTION
2	6-15-98	J. G.				ISSUED FOR AS-BUILT
1	3-21-97	J. G.	K. R.	K. R.	TDM	GENERAL REVISIONS

ISSUED FOR CONSTRUCTION
 DRAWN M. M. 6-25-96
 CHECKED J. K. 7-3-96
 ENGINEER K. R. 7-3-96
 PROJ M. D. W. 7-8-96
AS-BUILT DRAWINGS

PARSONS
 100 WEST WALNUT STREET
 PASADENA, CALIFORNIA

LIGO
 CALIFORNIA INSTITUTE OF TECHNOLOGY
 MASSACHUSETTS INSTITUTE OF TECHNOLOGY

LASER INTERFEROMETER
 GRAVITATIONAL-WAVE OBSERVATORY
 SITE NO. 1 - HANFORD, WASHINGTON
**ELECTRICAL
 MID & END STATIONS
 LIGHTING, COMMUNICATIONS
 & FIRE DETECTION PLAN**
 SCALE: AS NOTED
 CONTRACT NUMBER: PPI50969
 PROJECT NUMBER: 8094
WA-E-201