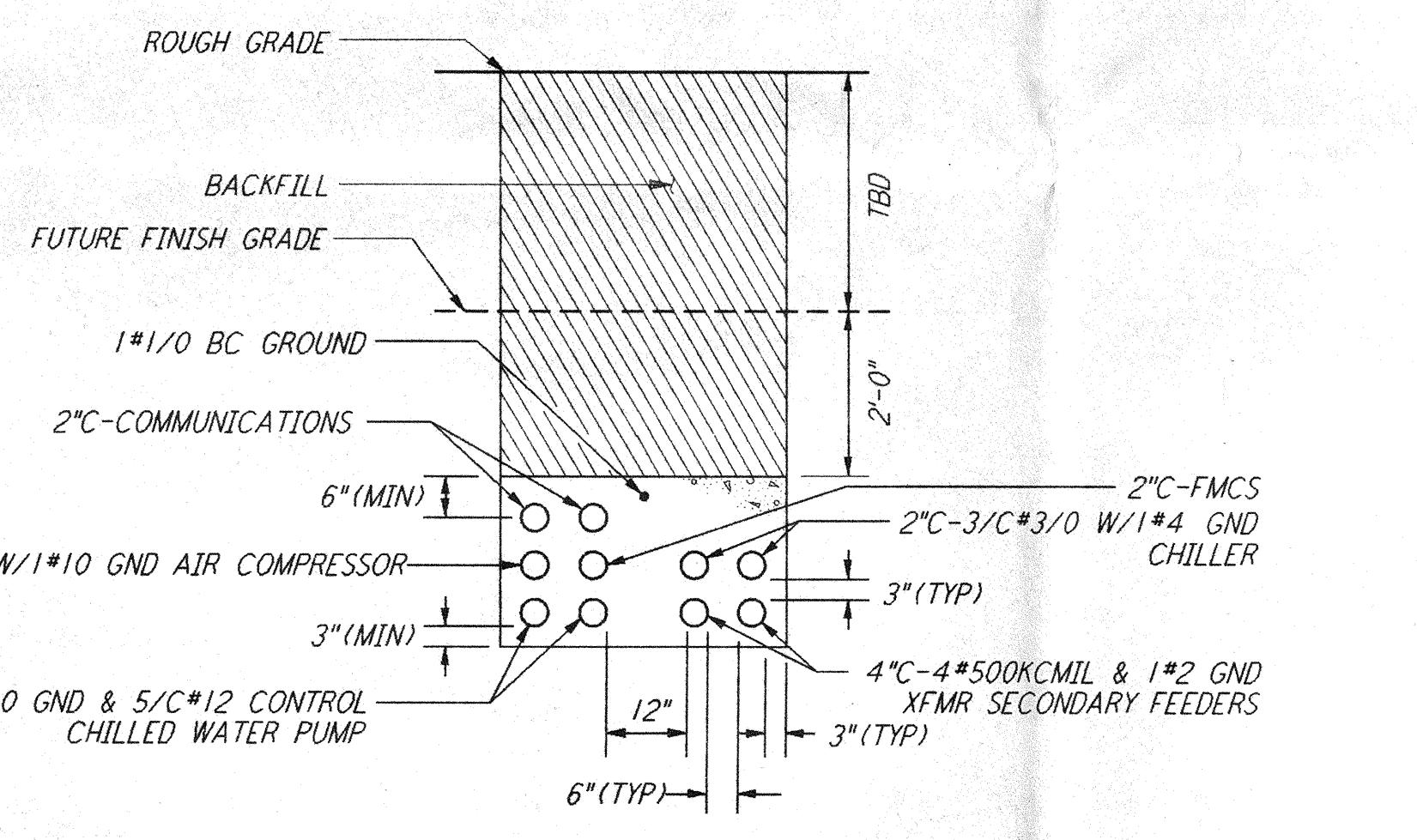
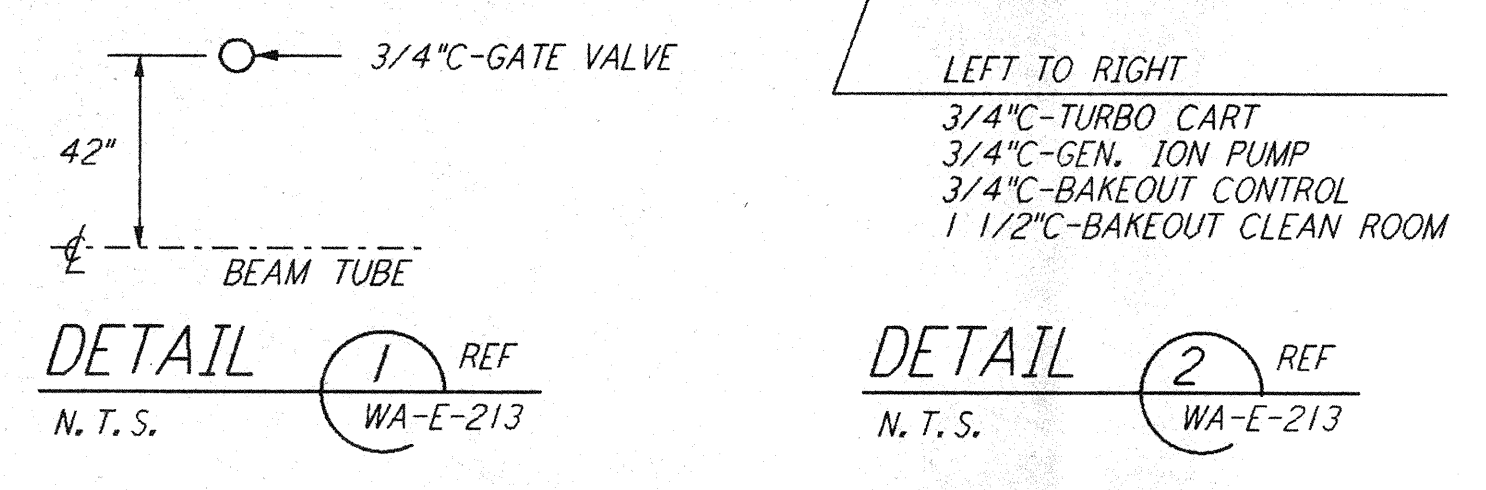
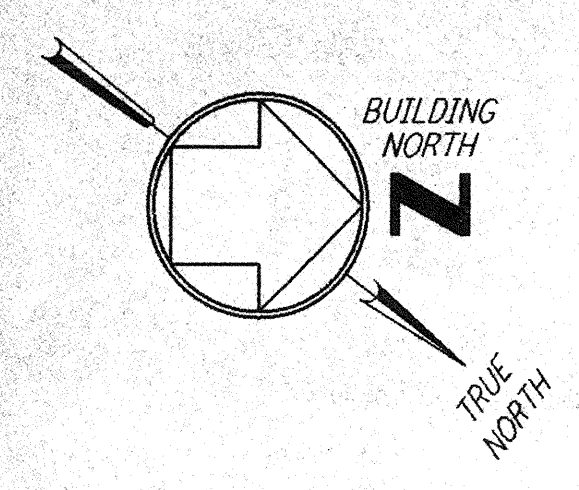
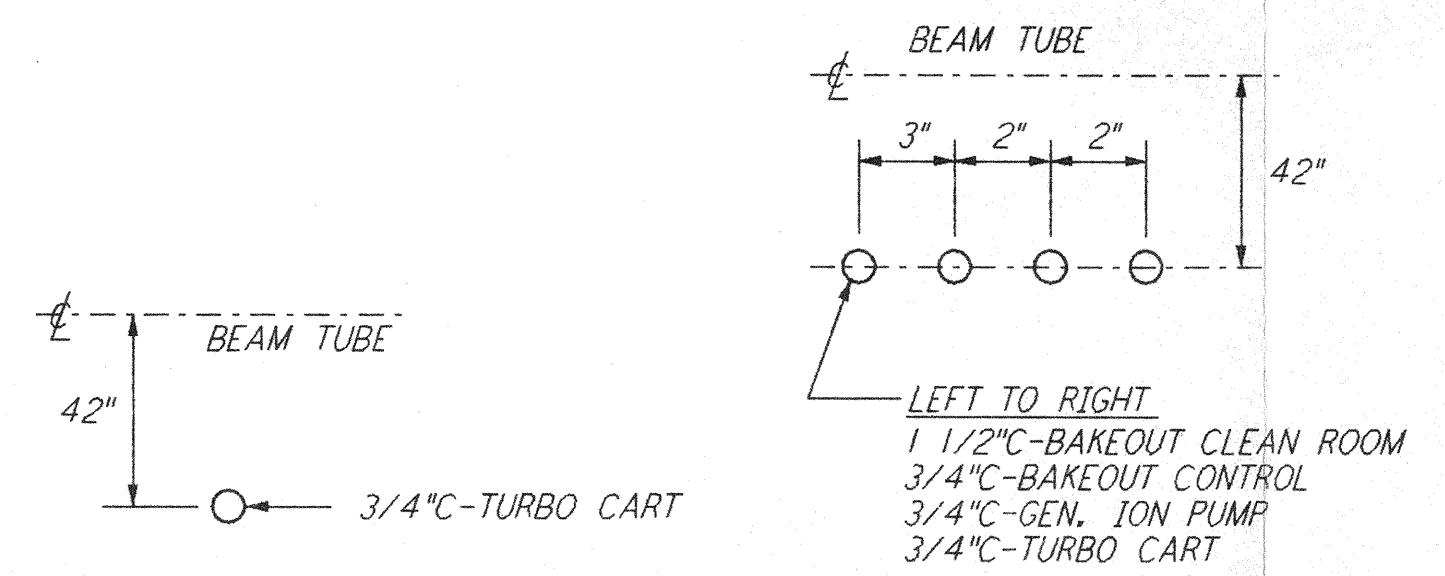
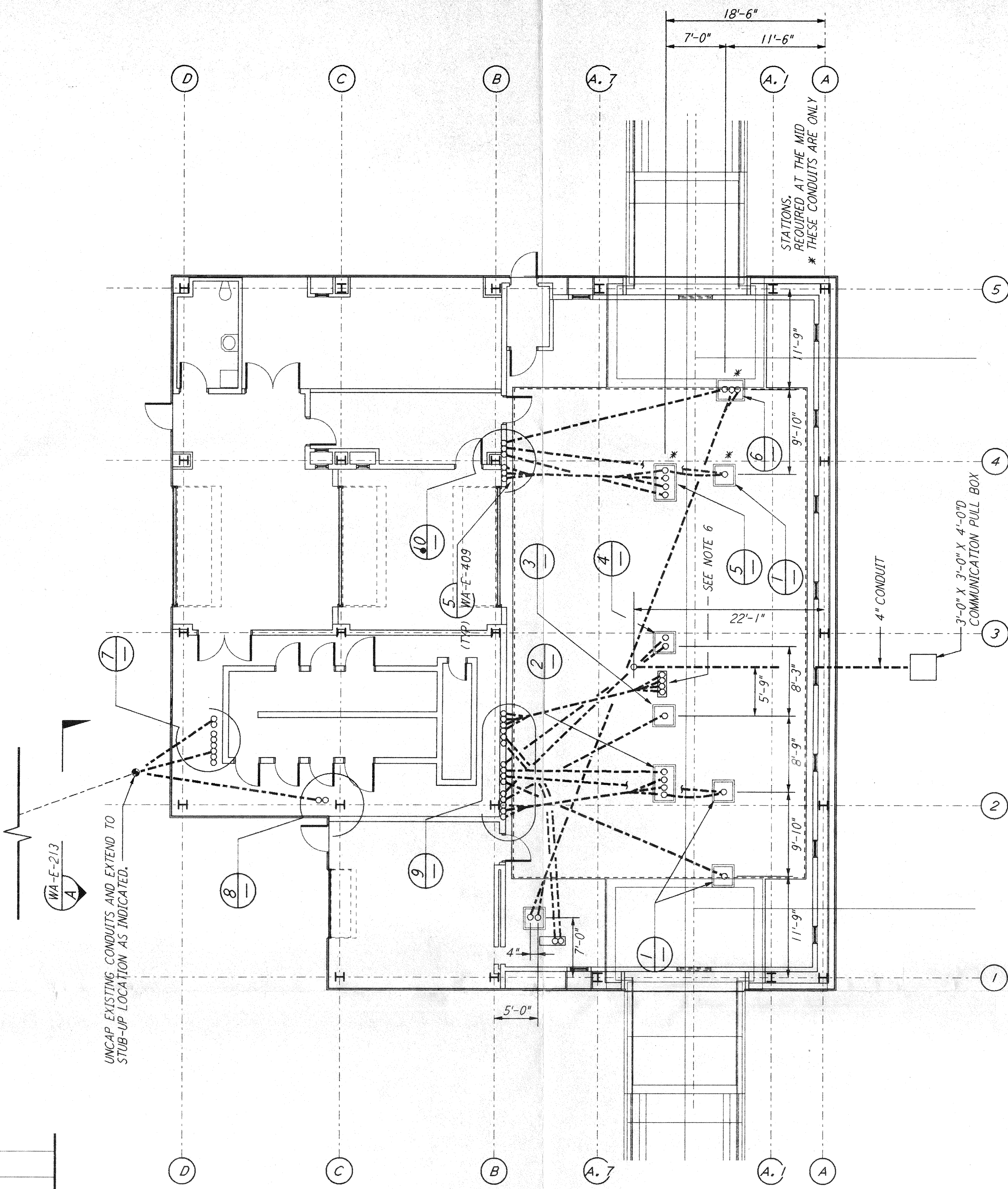
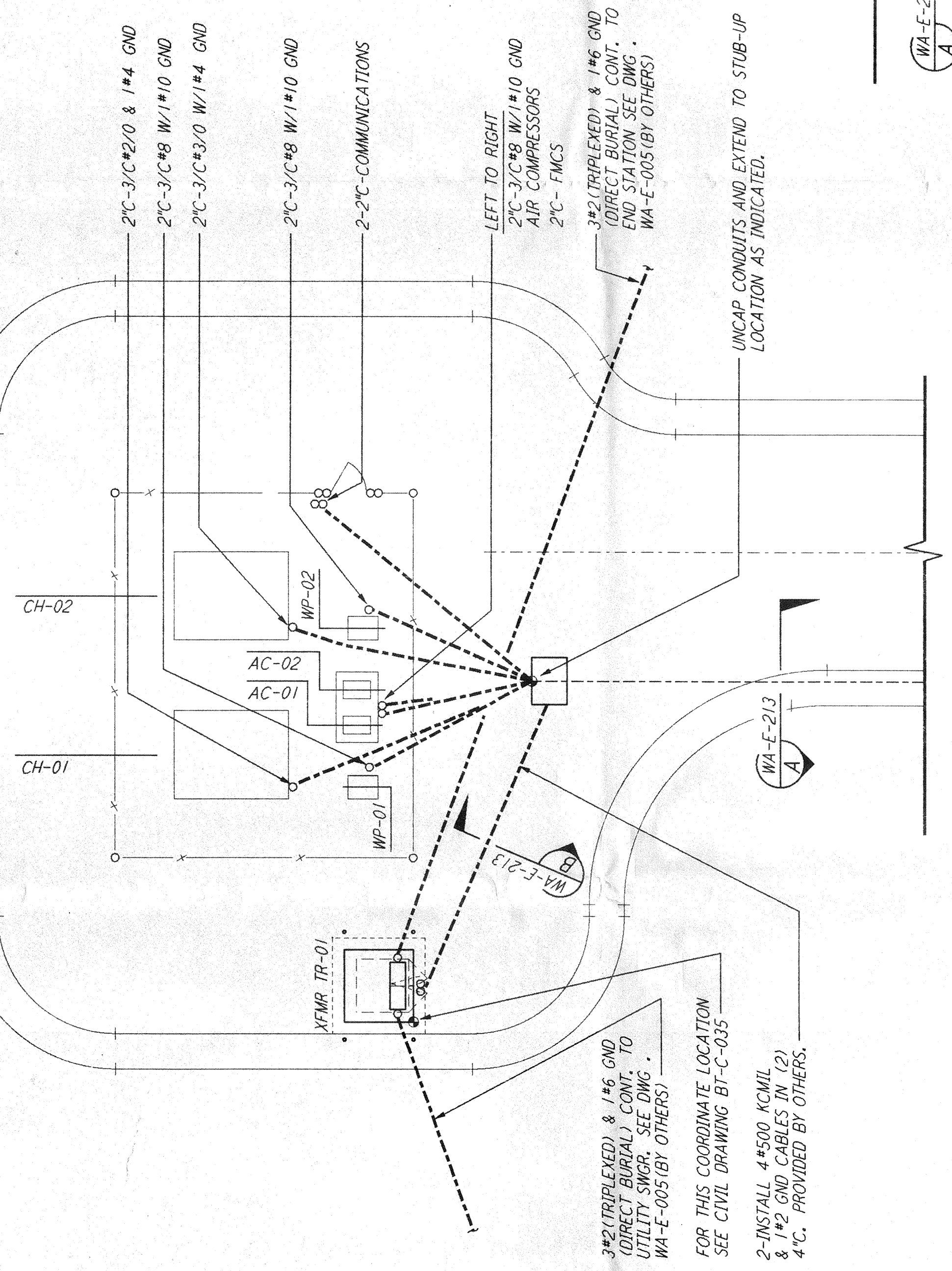


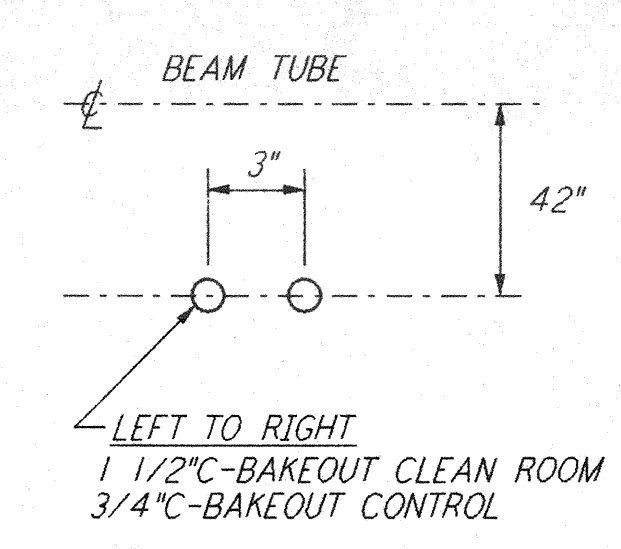
This document and the design it covers are the property of PARSONS. They are loaned only with the borrower's expressed written agreement that they will not be reproduced, copied, loaned, exhibited, or used in any other way, except by written consent from PARSONS to the borrower.



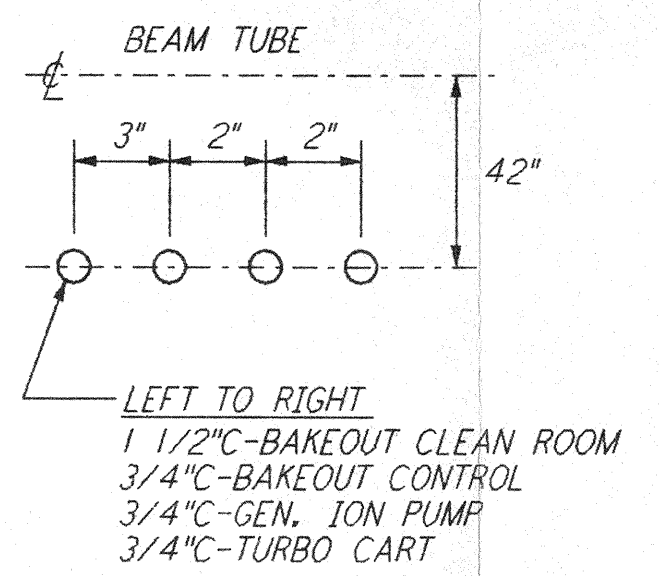
DUCT BANK SECTION A REF WA-E-213 N.T.S.



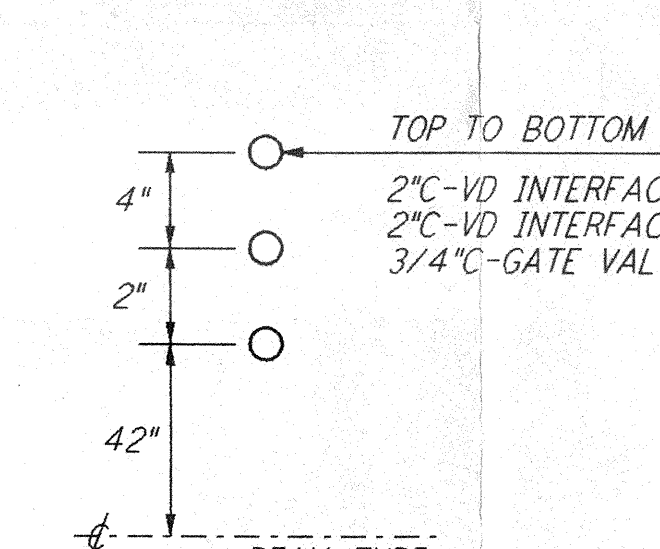
DETAIL 3 REF WA-E-213 N.T.S.



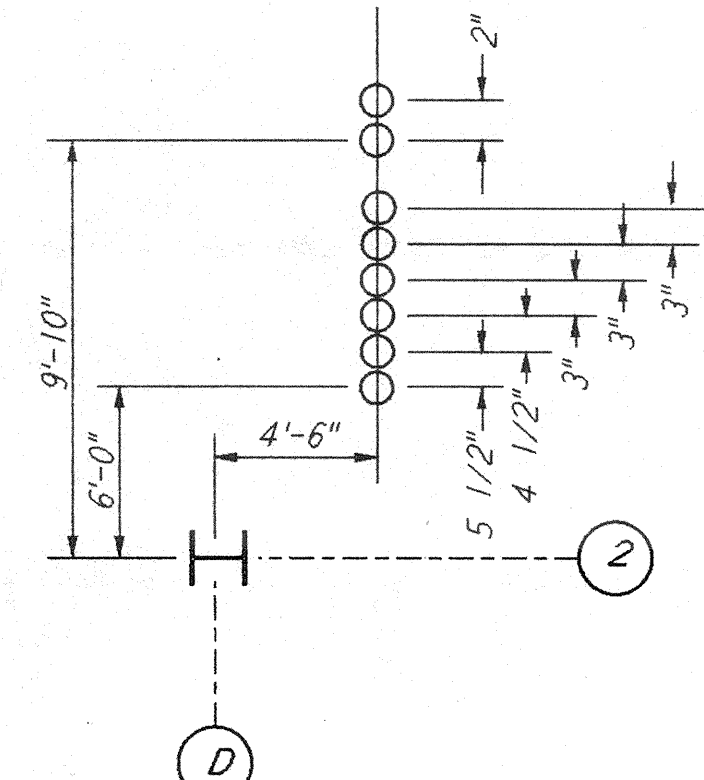
DETAIL 4 REF WA-E-213 N.T.S.



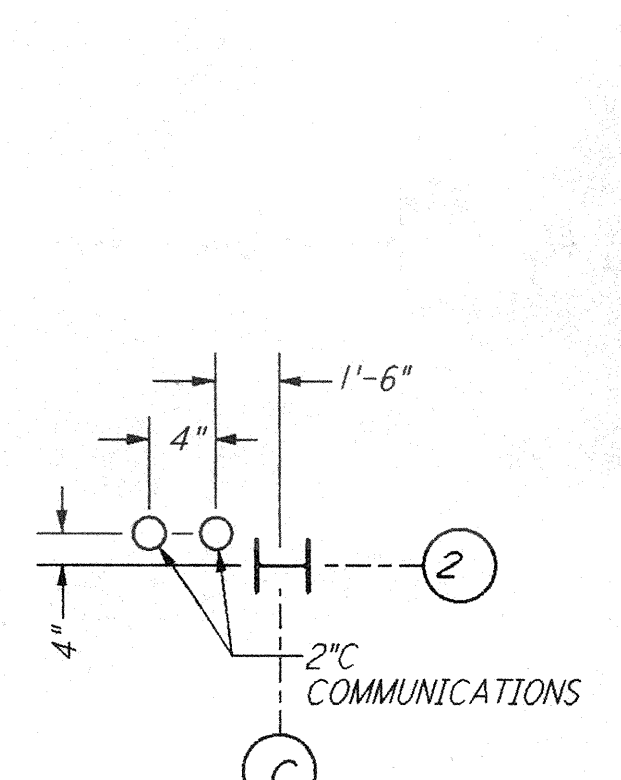
DETAIL 5 REF WA-E-213 N.T.S.



DETAIL 6 REF WA-E-213 N.T.S.

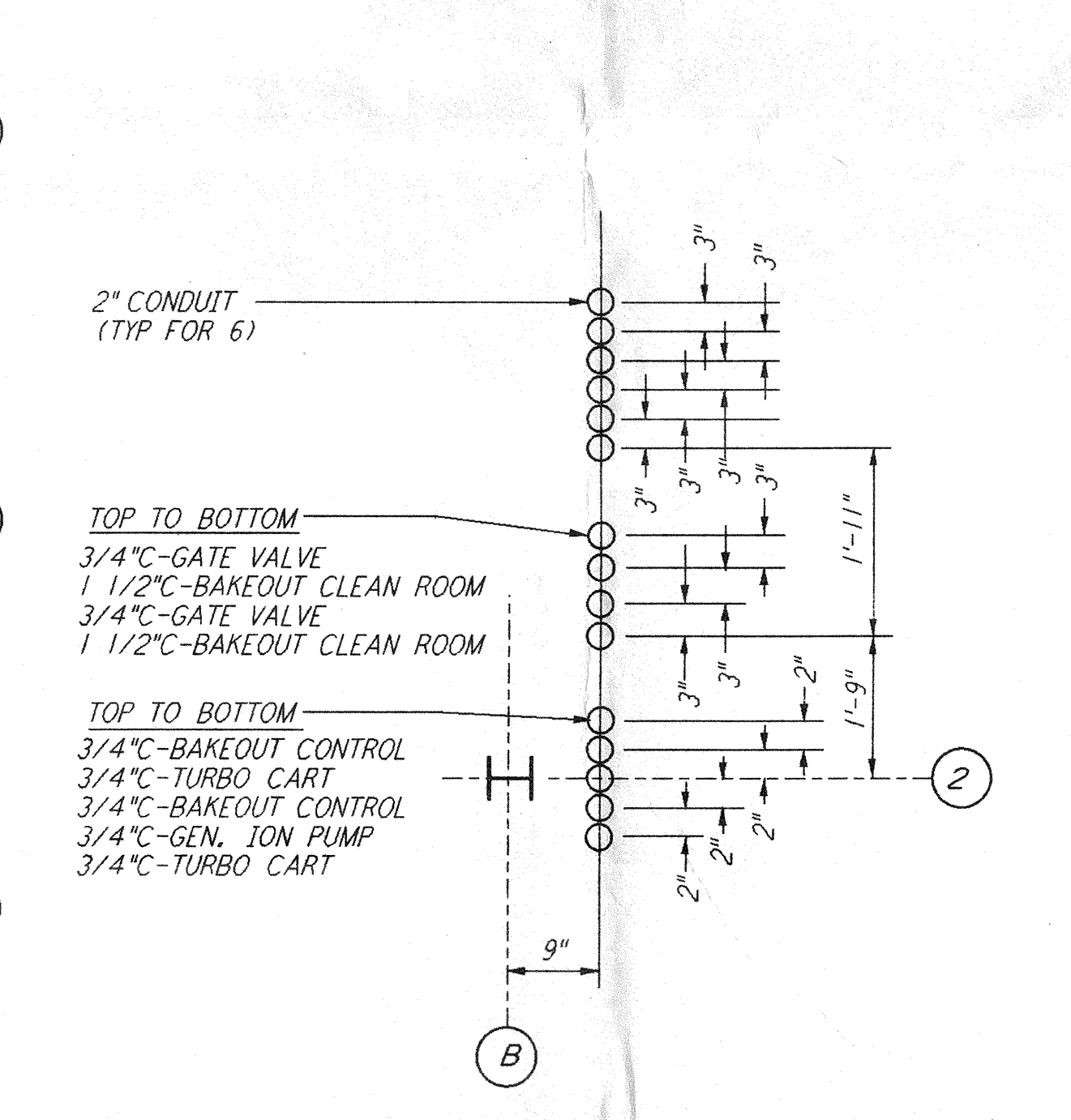


DETAIL 7 REF WA-E-213 N.T.S.

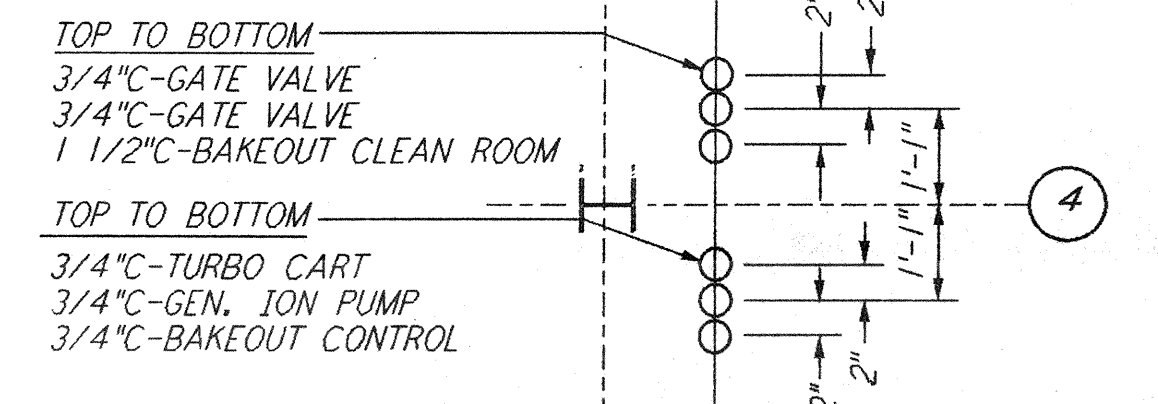


DETAIL 8 REF WA-E-213 N.T.S.

DUCT BANK SECTION B REF WA-E-213 N.T.S.



DETAIL 9 REF WA-E-213 N.T.S.



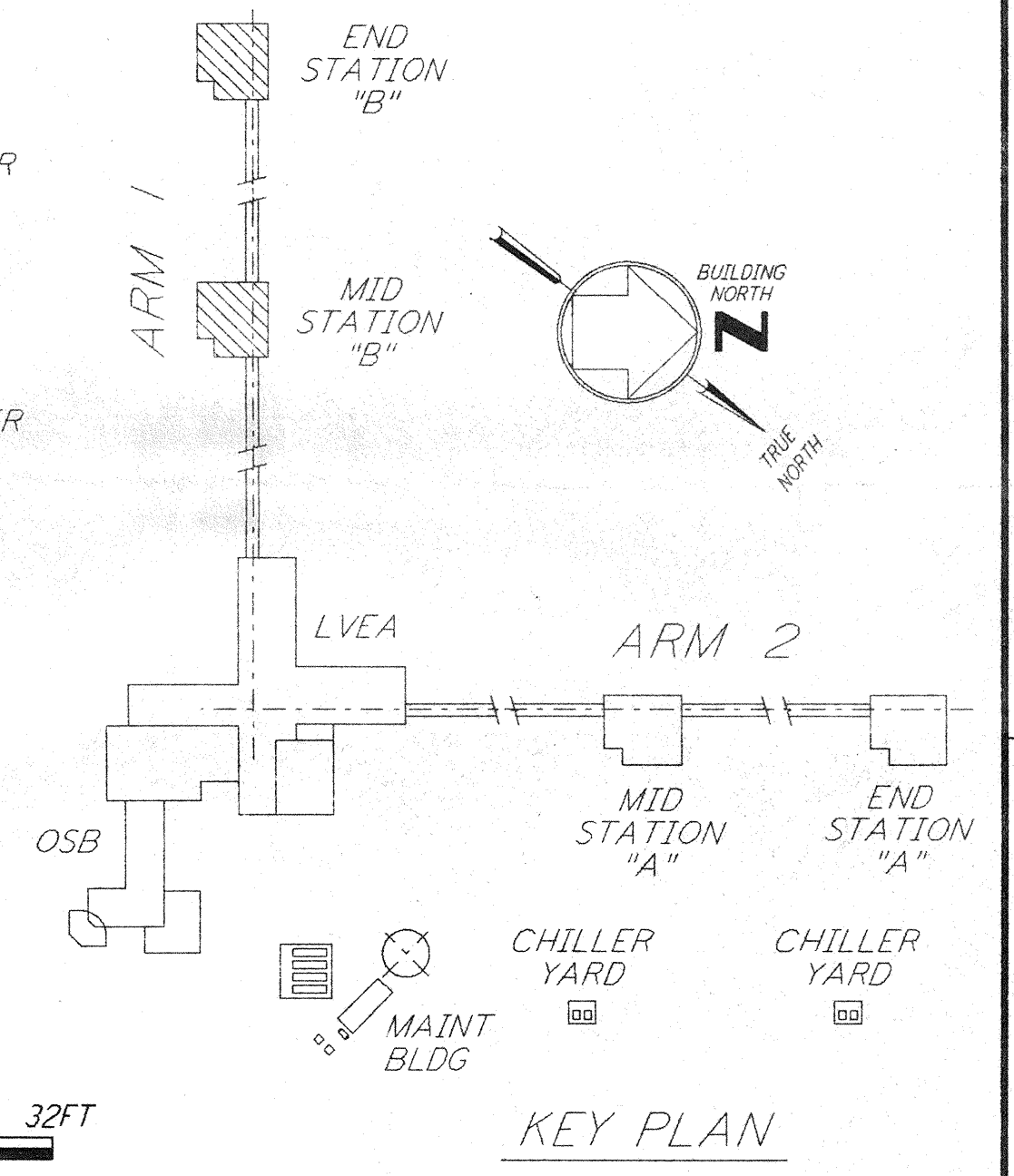
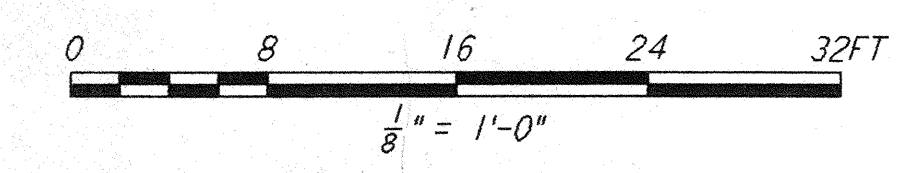
DETAIL 10 REF WA-E-213 N.T.S.

**GENERAL NOTES:**

1. FOR STANDARD SYMBOLS, ABBREVIATIONS AND ACRONYMS SEE DWG. WA-E-001.
2. FOR ELECTRICAL SYMBOLS SEE DWG. WA-E-002.
3. FOR STANDARD INSTALLATION DETAILS SEE DWG. WA-E-405 THRU WA-E-407.
4. FOR CABLE TYPE DESCRIPTION SEE DWG. WA-E-007.
5. ALL RUNS ARE SHOWN DIAGRAMMATICALLY ONLY. CONTRACTOR SHALL COORDINATE INSTALLATION WITH OTHER DISCIPLINES.
6. COORDINATES OF CDS POWER CONDUIT STUB-UPS SHALL BE COORDINATED WITH THE VACUUM EQUIPMENT VENDOR.

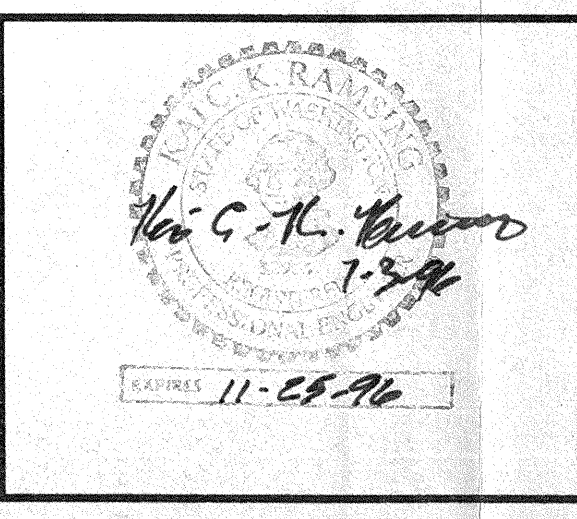
**NOTES:**

1. FOR NODE NUMBERING SCHEDULE SEE DWG. WA-E-008.
2. THE WORK MARKED BY HAND ON THIS DRAWING IN REVISION "A" DATED 4-15-96 HAS BEEN RESTORED TO THIS CONTRACT.



| NO. | DATE | BY | CHKD | ENGR | PROJ | DESCRIPTION |
|-----|------|----|------|------|------|-------------|
|     |      |    |      |      |      |             |
|     |      |    |      |      |      |             |
|     |      |    |      |      |      |             |
|     |      |    |      |      |      |             |

| ISSUED FOR CONSTRUCTION | DATE          |
|-------------------------|---------------|
| DRAWN                   | M. M. 6-25-96 |
| CHECKED                 | 7-3-96        |
| ENGINEER                | 7-3-96        |
| PROJ                    | 7-8-96        |



**PARSONS**  
 100 WEST WALNUT STREET  
 PASADENA, CALIFORNIA

**LIGO**  
 CALIFORNIA INSTITUTE OF TECHNOLOGY  
 MASSACHUSETTS INSTITUTE OF TECHNOLOGY

LASER INTERFEROMETER  
 GRAVITATIONAL-WAVE OBSERVATORY  
 SITE NO. 1 - HANFORD, WASHINGTON

**ELECTRICAL  
 MID & END B STATIONS  
 UNDERGROUND  
 PLAN**

AS NOTED PP150969 8094  
**WA-E-213**

LIGO-D860419-00-0