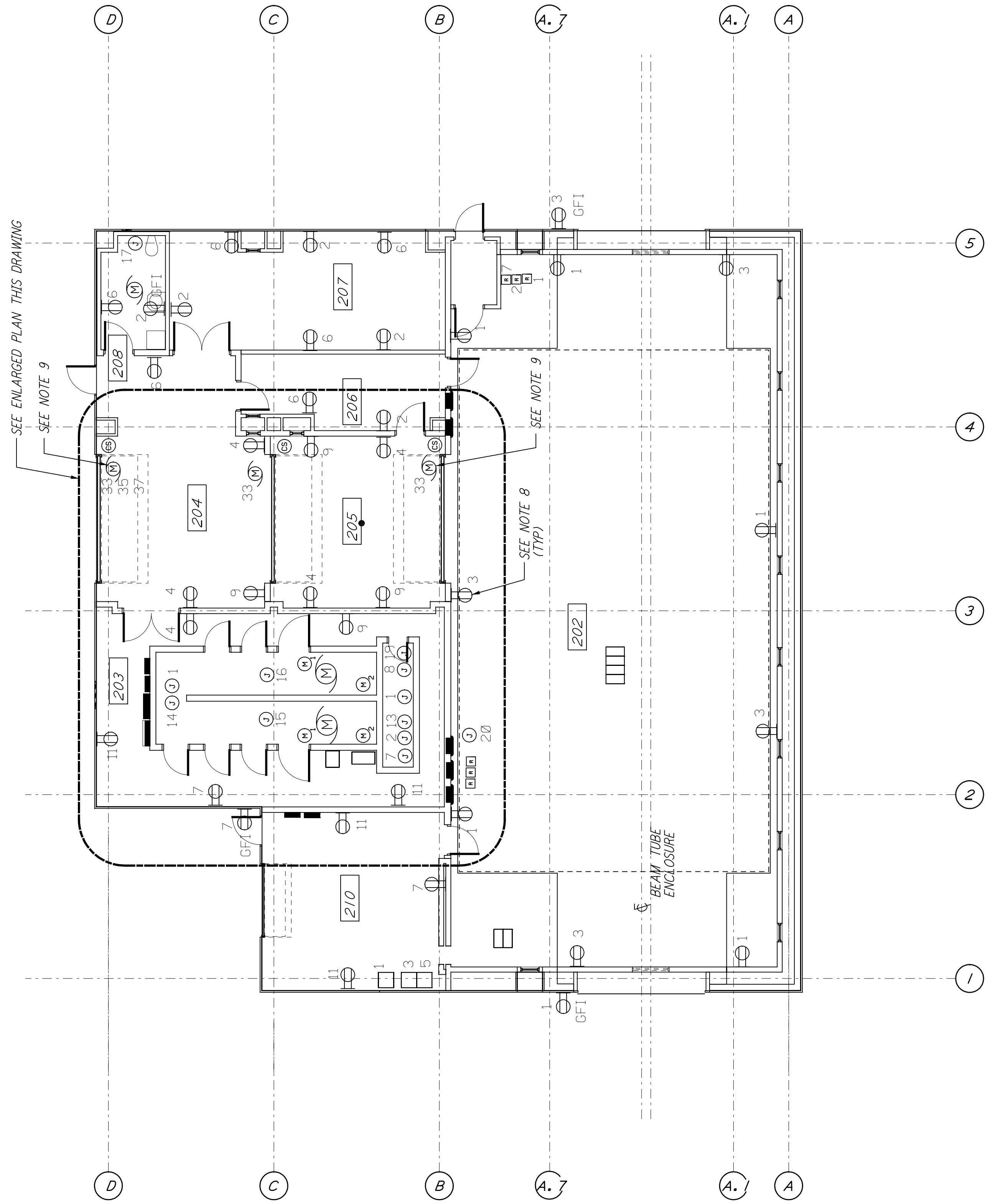
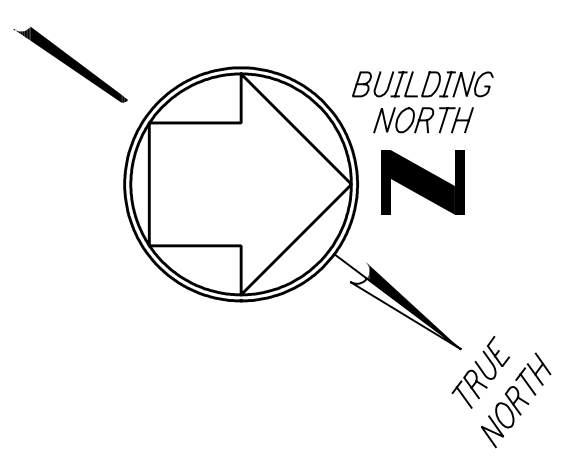
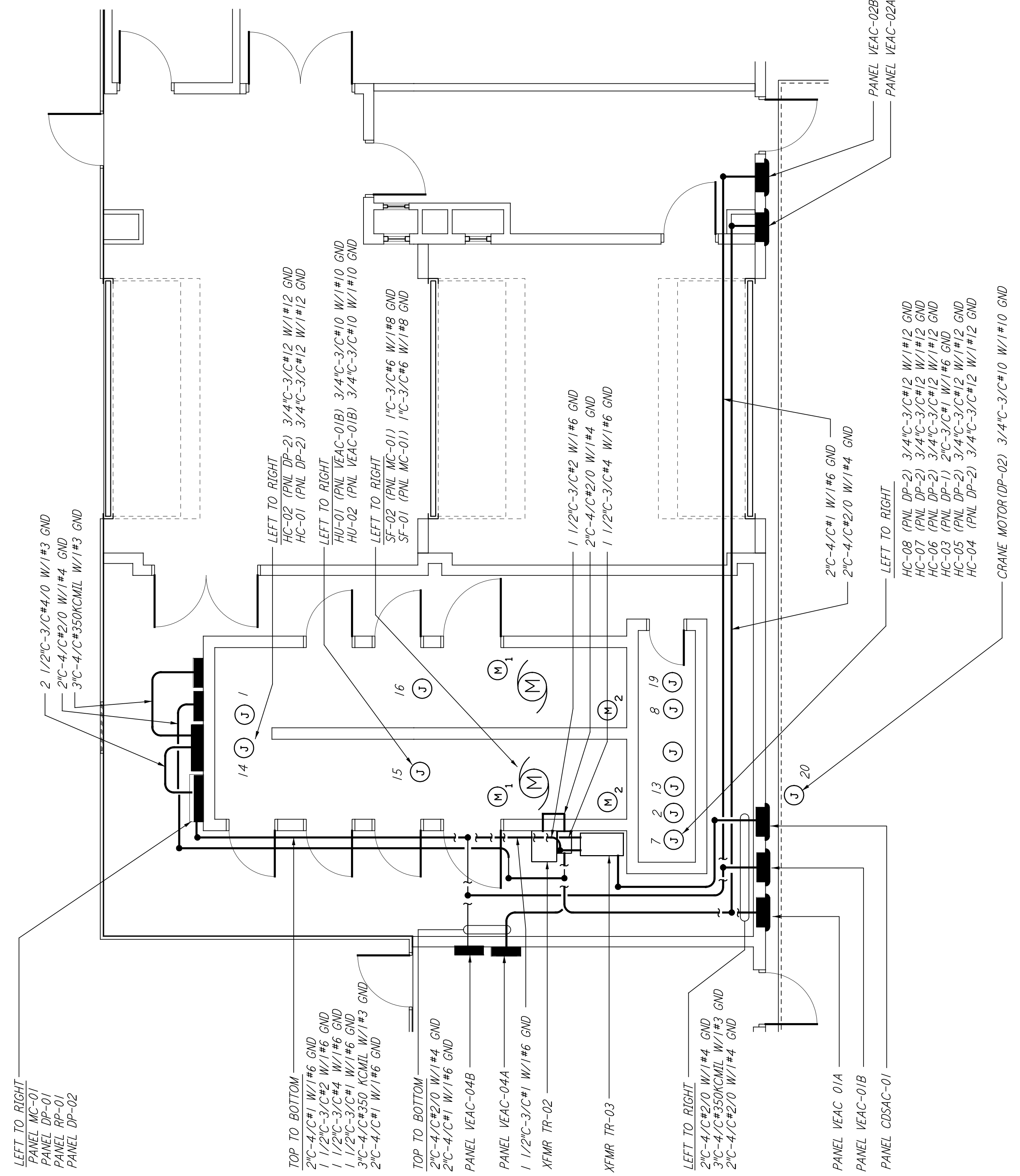


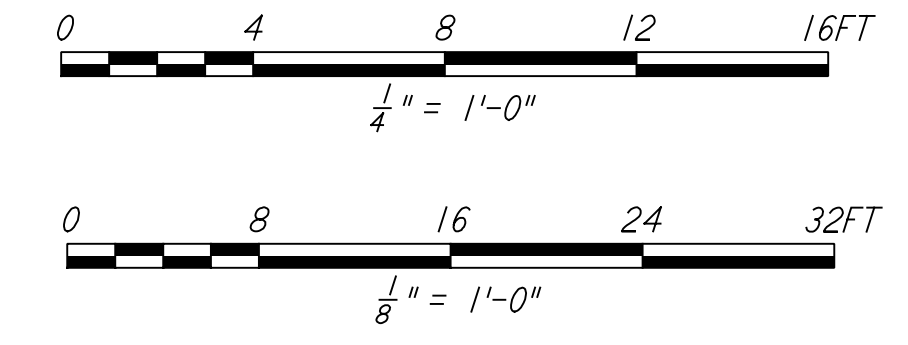
This document and the design it covers are the property of **PARSONS**. They are loaned only with the borrower's expressed written agreement that they will not be reproduced, copied, loaned, exhibited, or used in any other way, except by written consent from **PARSONS** to the borrower.



ROOMS 202 & 208 RECPT. ARE 3'-6" ABOVE FINISHED FLOOR (ALL OTHERS ARE 1'-6")
 LIGHTING PANEL IS 6'-6" TO TOP OF CIRCUIT BREAKERS
 LIGHTING SWITCHES ARE 4'-0" TO CENTERLINE OF BOX



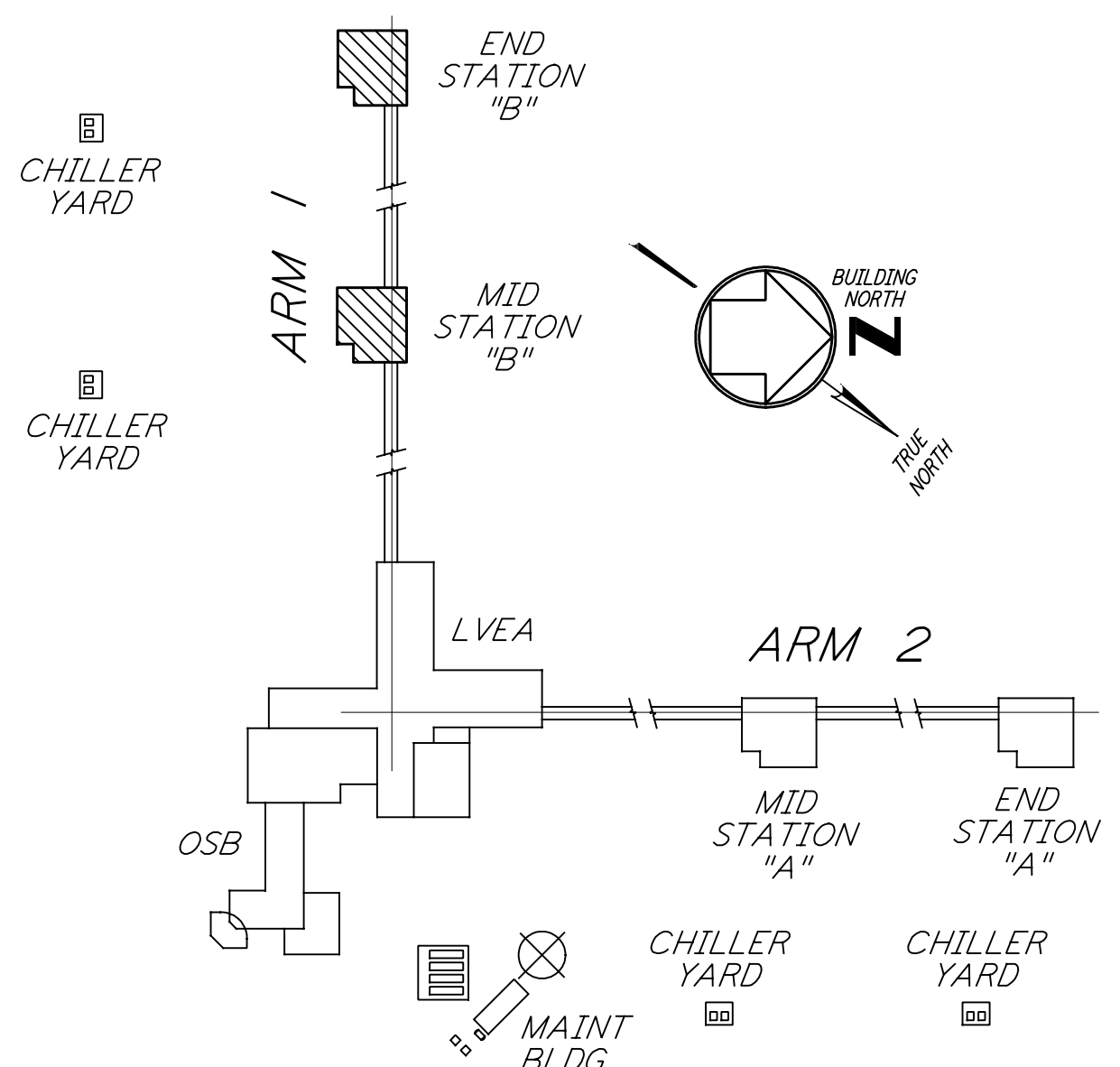
ENLARGED PLAN
 1/4" = 1'-0"



GENERAL NOTES:

- FOR STANDARD SYMBOLS, ABBREVIATIONS AND ACRONYMS SEE DWG. WA-E-001.
- FOR ELECTRICAL SYMBOLS SEE DWG. WA-E-002.
- FOR STANDARD INSTALLATION DETAILS SEE DWG. WA-E-404 AND WA-E-409.
- FOR CABLE TYPE DESCRIPTION SEE DWG. WA-E-007.
- ALL RUNS ARE SHOWN DIAGRAMMATICALLY ONLY, CONTRACTOR SHALL COORDINATE INSTALLATION WITH OTHER DISCIPLINES.
- FOR SINGLE LINE DIAGRAM, SEE DWG. WA-E-008.
- FOR EQUIPMENT LOCATION, SEE HVAC DWG. WA-H-211.
- ALL CIRCUITS SHOWN ON THIS DRAWING ARE FROM PANEL RPO1 UNLESS OTHERWISE NOTED.
- CIRCUIT SHOWN FEEDING THESE ITEMS ARE FROM DP-02.
- PANEL SCHEDULES ARE SHOWN ON DRAWINGS WA-E-205 AND WA-E-206.

- (M)₁ VANE ACTUATOR
- (M)₂ SHUTTER MOTOR



KEY PLAN

LIGO-D960420-02-O

**LASER INTERFEROMETER
 GRAVITATIONAL-WAVE OBSERVATORY
 SITE NO. 1 - HANFORD, WASHINGTON**

TITLE	SCALE	PROJECT NUMBER	PROJECT NUMBER
ELECTRICAL MID & END B STATIONS ABOVEGROUND POWER PLAN	AS NOTED	PP150969	8094
SHEET NUMBER	REVISIONS		
WA-E-214			

NO.	DATE	BY	CHKD	ENGR	PROJ	DESCRIPTION
2	6-15-98	J. G.				ISSUED FOR AS-BUILT
1	3-21-97	J. G.	K. R.	K. R.	TDM	GENERAL REVISIONS

ISSUED FOR CONSTRUCTION		
DRAWN	M. M.	6-25-96
CHECKED	J. K.	7-3-96
ENGINEER	K. R.	7-3-96
PROJ	M. D. W.	7-8-96
AS-BUILT DRAWINGS		

PARSONS
 100 WEST WALNUT STREET
 PASADENA, CALIFORNIA

LIGO
 CALIFORNIA INSTITUTE OF TECHNOLOGY
 MASSACHUSETTS INSTITUTE OF TECHNOLOGY

This drawing is the property of PARSONS. It is loaned to you for your use only. It is not to be reproduced, copied, loaned, exhibited, or used in any other way, except by written consent from PARSONS to the borrower.