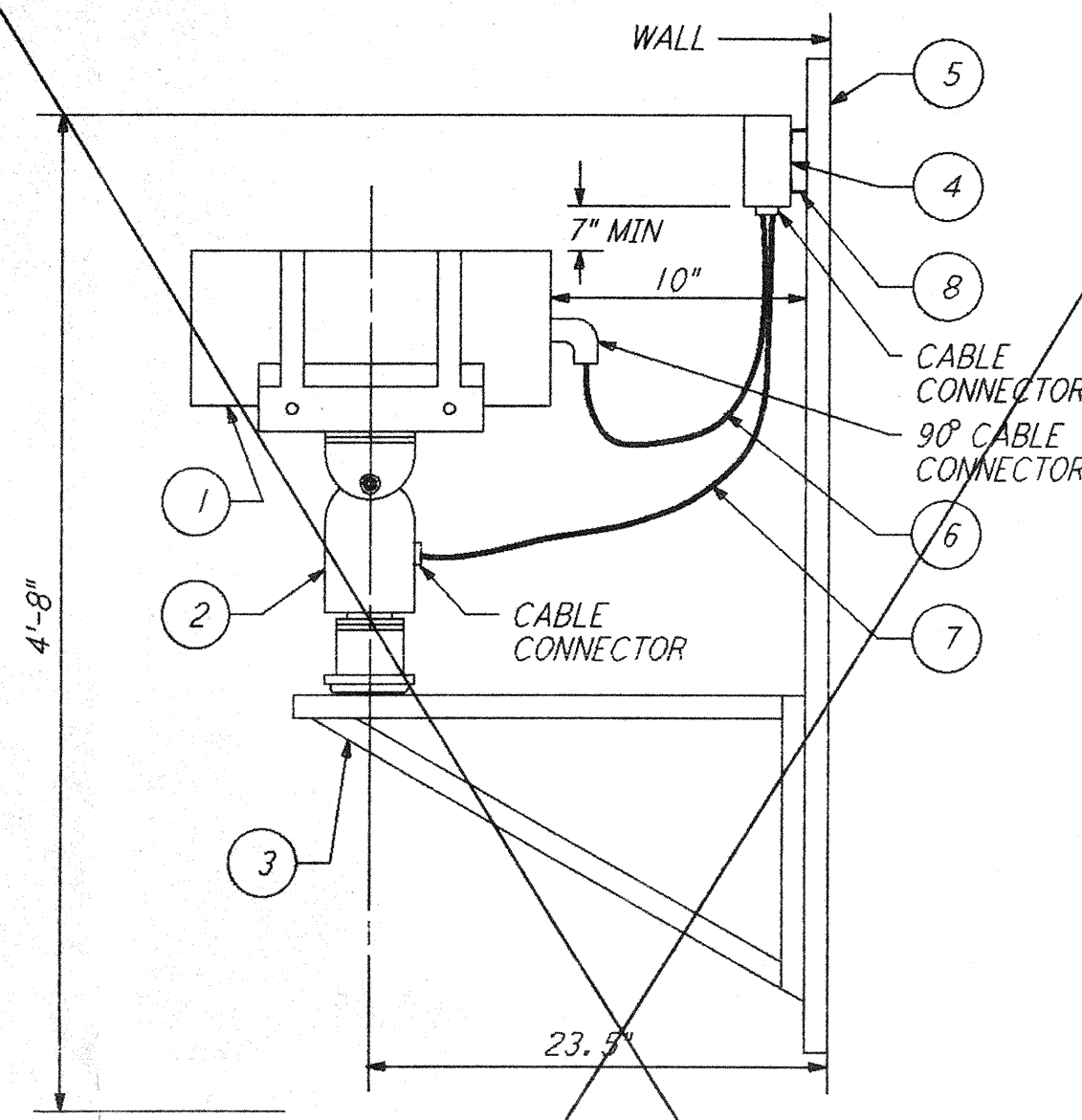


LIST OF MATERIAL

| ITEM NO. | QTY | DESCRIPTION  |
|----------|-----|--|
| 1        | 1   | RECEPT 115V, 20A, 2W-3P, MOUNTED IN A NEMA 3R ENCLOSURE  |
| 2        | 1   | STEEL PLATE 1/4" X 7 1/2" X 8" GALV                      |
| 3        | 2   | BOLT, 1/4"-20 X 1" LG HEX HEAD                           |
| 4        | 2   | NUT, 1/4"-20   |
| 5        | 2   | LOCKWASHER 1/4"  |
| 6        | 1   | UNION 3/4"   |
| 7        | AR  | CONDUIT, 3/4" RIGID STEEL GALV OR EMT (AS NOTED ON PLAN) |

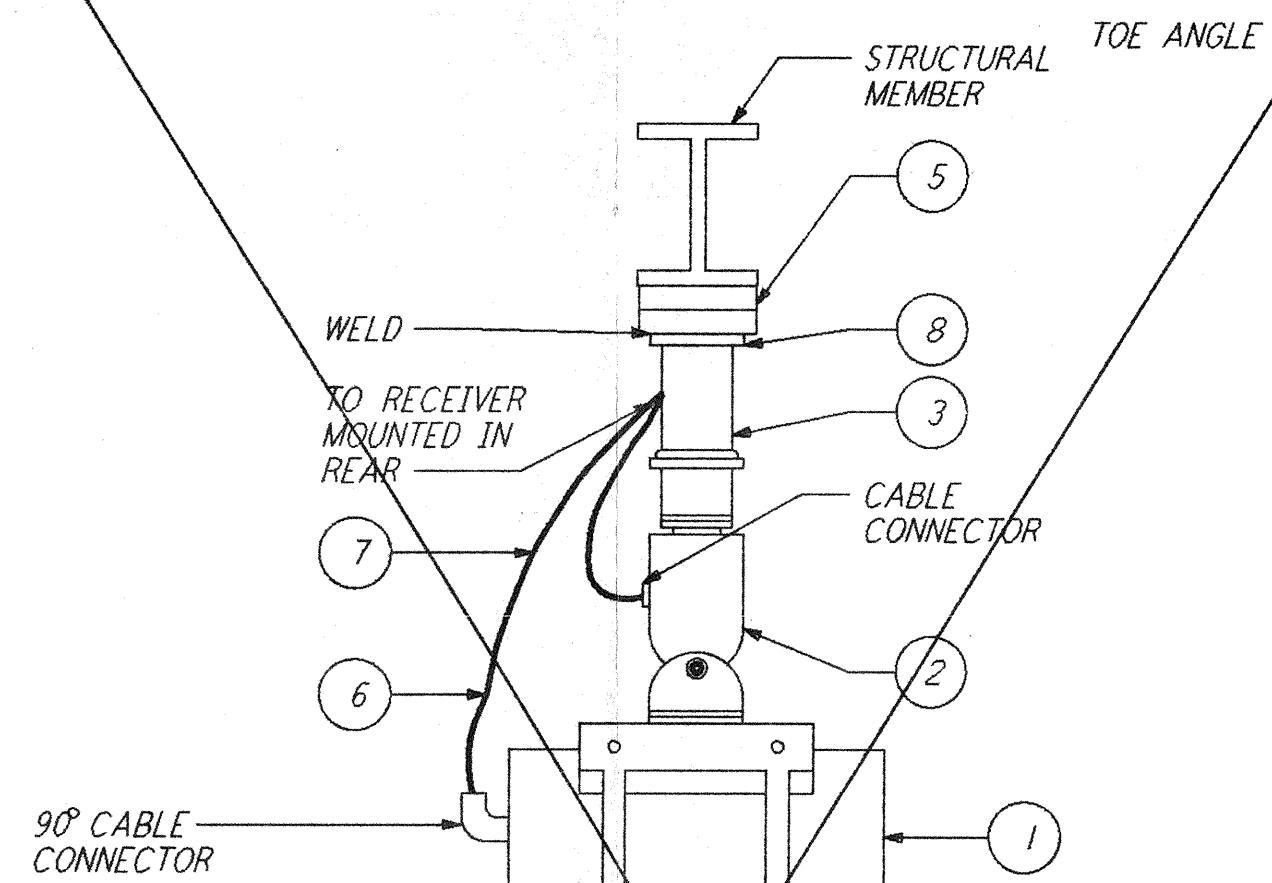
RECEPTACLE MOUNTED ON HANDRAIL (1) REF  
 N. T. S.



LIST OF MATERIAL

| ITEM NO. | QTY | DESCRIPTION                                   |
|----------|-----|---|
| 1        | 1   | CAMERA WITH ZOOM LENS                         |
| 2        | 1   | PAN/TILT MECHANISM                            |
| 3        | 1   | MOUNTING BRACKET                              |
| 4        | 1   | RECEIVER UNIT                                 |
| 5        | 2   | CHANNEL, 3" X 1 1/2" (LENGTH AS REQUIRED)     |
| 6        | 1   | CAMERA CABLE                                  |
| 7        | 1   | PAN/TILT CABLE                                |
| 8        | 2   | ANGLE IRON, 1 1/2" X 1 1/2" (WELD TO CHANNEL) |

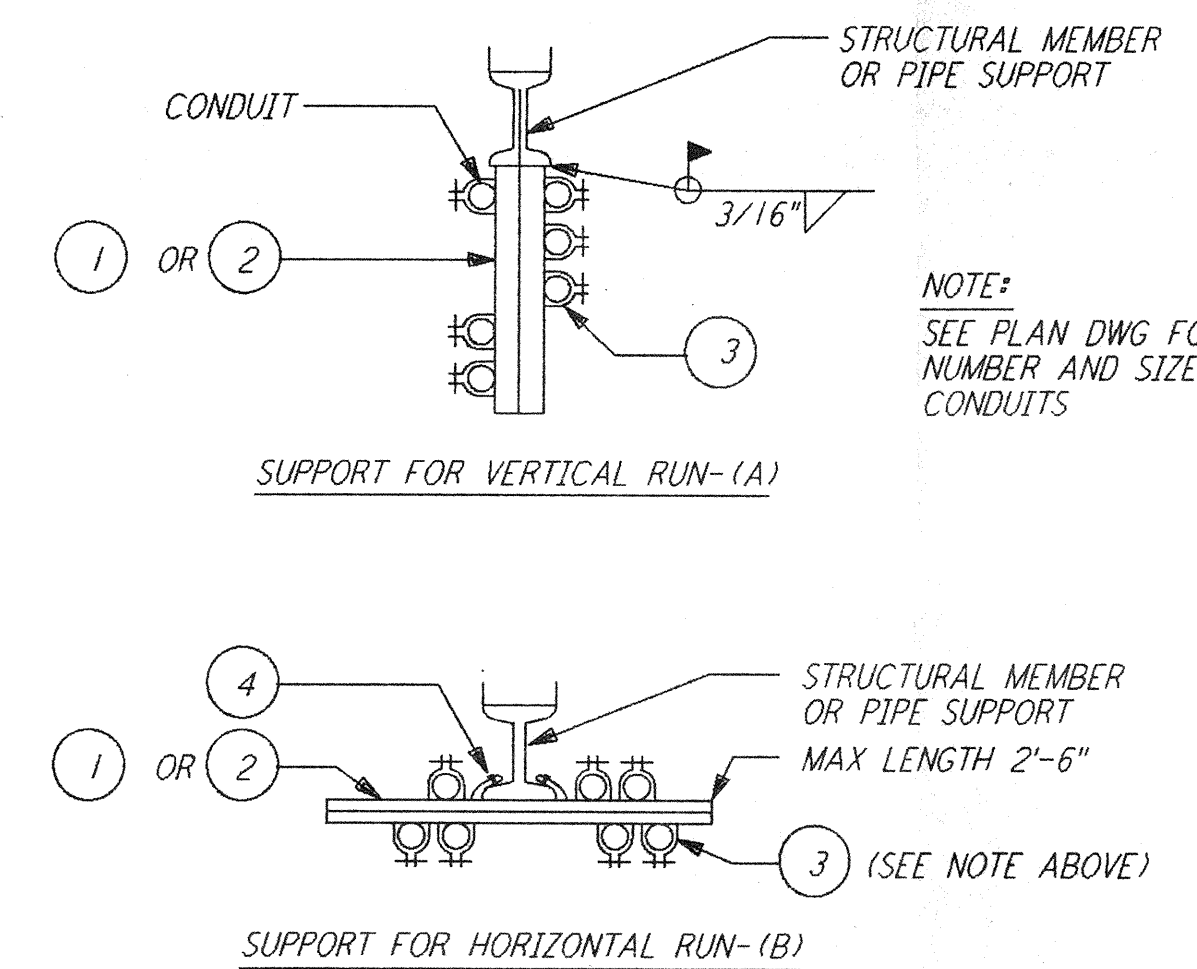
CAMERA MOUNTING ALONGSIDE A WALL (2) REF  
 N. T. S.



LIST OF MATERIAL

| ITEM NO. | QTY | DESCRIPTION                                    |
|----------|-----|--|
| 1        | 1   | CAMERA   |
| 2        | 1   | PAN/TILT MECHANISM                             |
| 3        | 1   | PENDANT SUPPORT                                |
| 4        | 1   | RECEIVER UNIT (NOT SHOWN)                      |
| 5        | 2   | CHANNEL, 3" X 1 1/2"                           |
| 6        | 1   | CAMERA CABLE                                   |
| 7        | 1   | PAN/TILT CABLE                                 |
| 8        | 1   | PLATE, STEEL GALVANIZED, 5" X 5" X 1/2"        |
| 9        | 1   | RECEIVER MOUNT CHANNEL 3" X 1 1/2" (NOT SHOWN) |

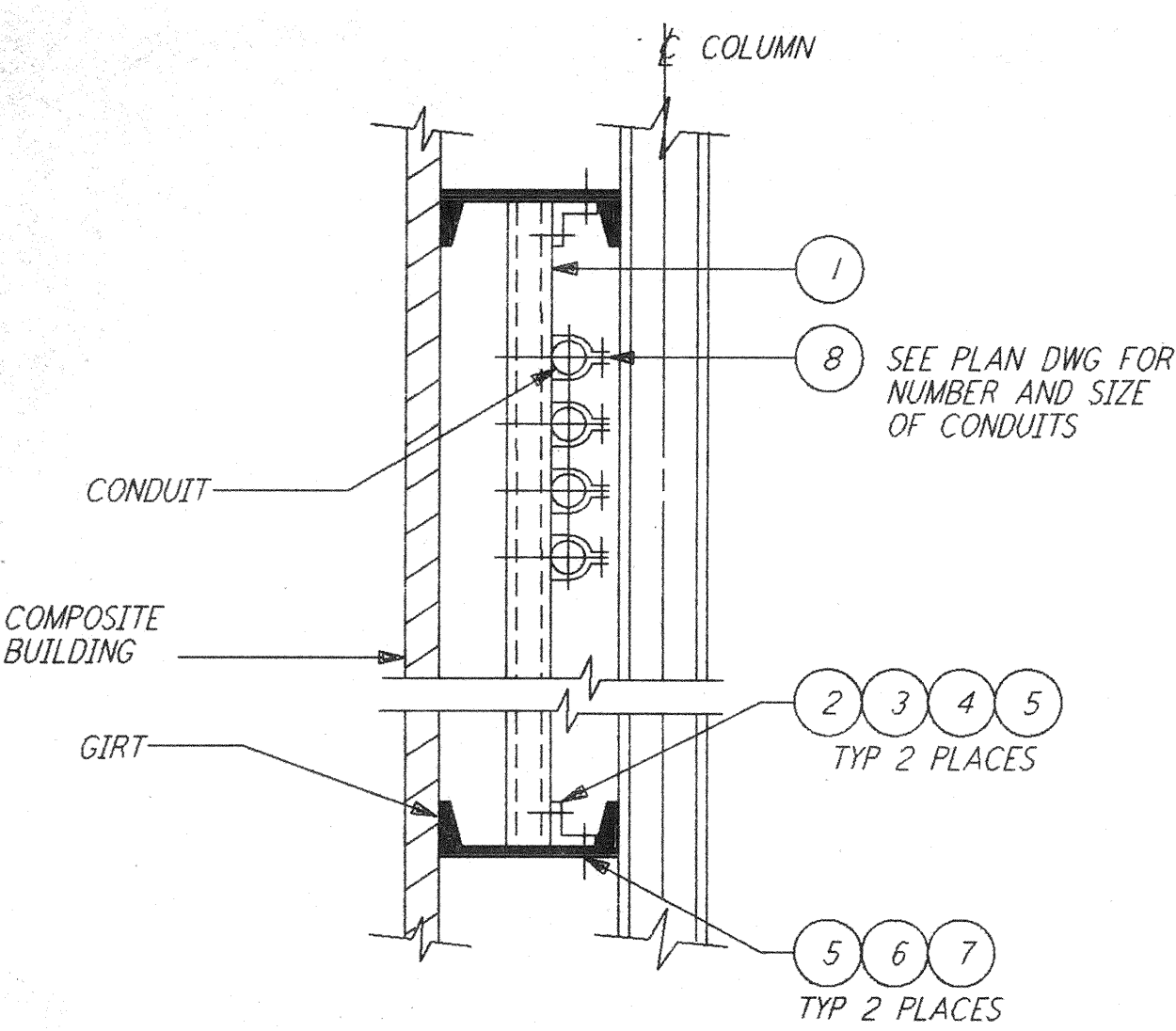
CAMERA MOUNTING CEILING MOUNTED (3) REF  
 N. T. S.



LIST OF MATERIAL

| ITEM NO. | QTY | DESCRIPTION                                      |
|----------|-----|--|
| 1        | AR  | PREFORMED CHANNEL 12 GAUGE STEEL, SEE NOTE 1     |
| 2        | AR  | CHANNEL 12 GAUGE STEEL, BACK-TO-BACK, SEE NOTE 1 |
| 3        | AR  | CONDUIT CHANNEL CLAMP                            |
| 4        | 2   | BEAM CLAMP                                       |

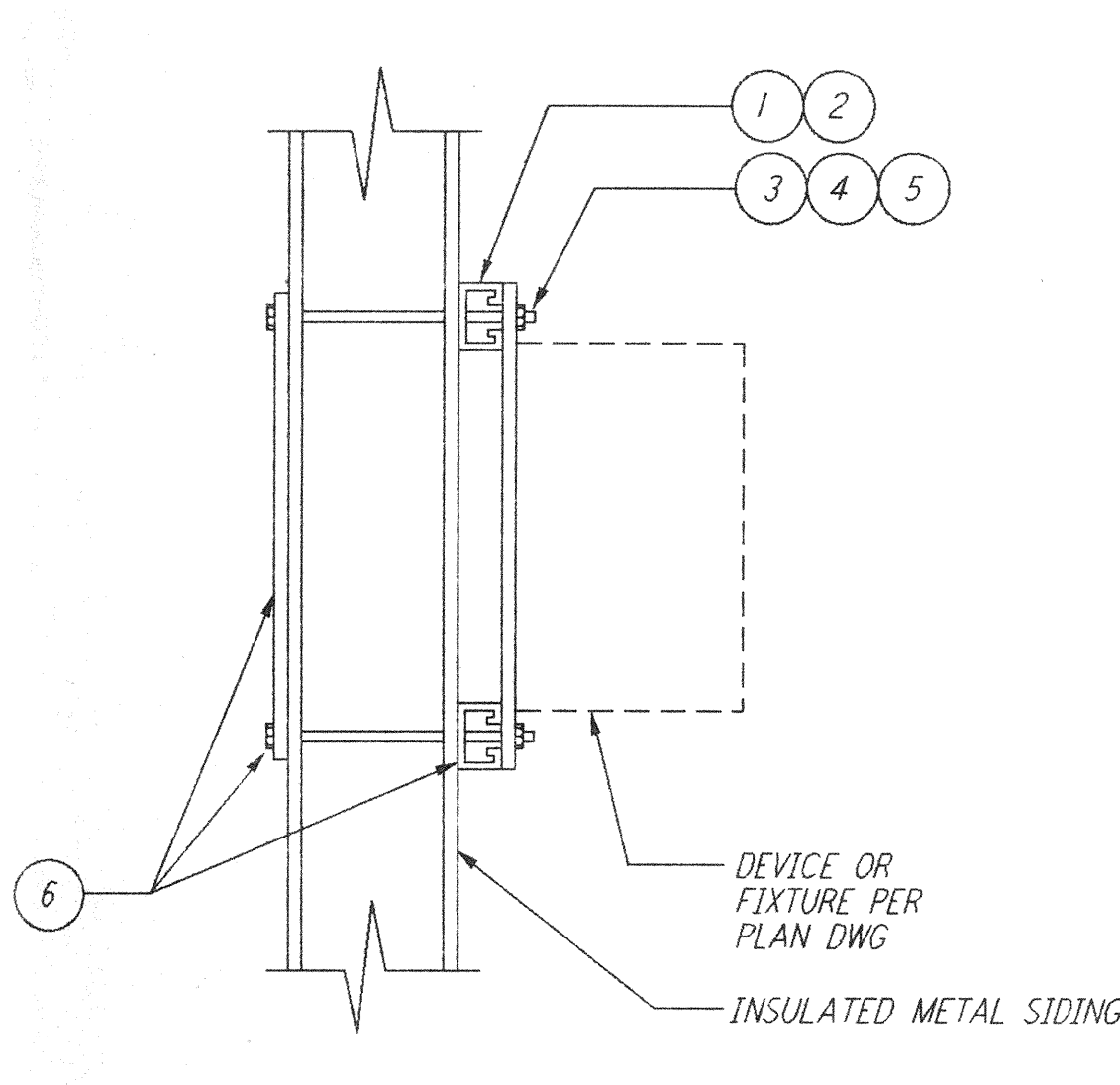
CONDUIT SUPPORT ON STEEL MEMBERS (4) REF  
 N. T. S.



LIST OF MATERIAL

| ITEM NO. | QTY | DESCRIPTION                      |
|----------|-----|----------------------------------|
| 1        | AR  | PREFORMED CHANNEL 12 GAUGE STEEL |
| 2        | 2   | ANGLE FITTING                    |
| 3        | 4   | SPRING NUT FOR CHANNEL           |
| 4        | 4   | BOLT 3/8" - 16 X 1"              |
| 5        | 6   | FLAT WASHER - 3/8"               |
| 6        | 2   | BOLT 3/8" - 16 X 1 1/2"          |
| 7        | 2   | NUT 3/8" - 16                    |
| 8        | AR  | CONDUIT CHANNEL CLAMP            |

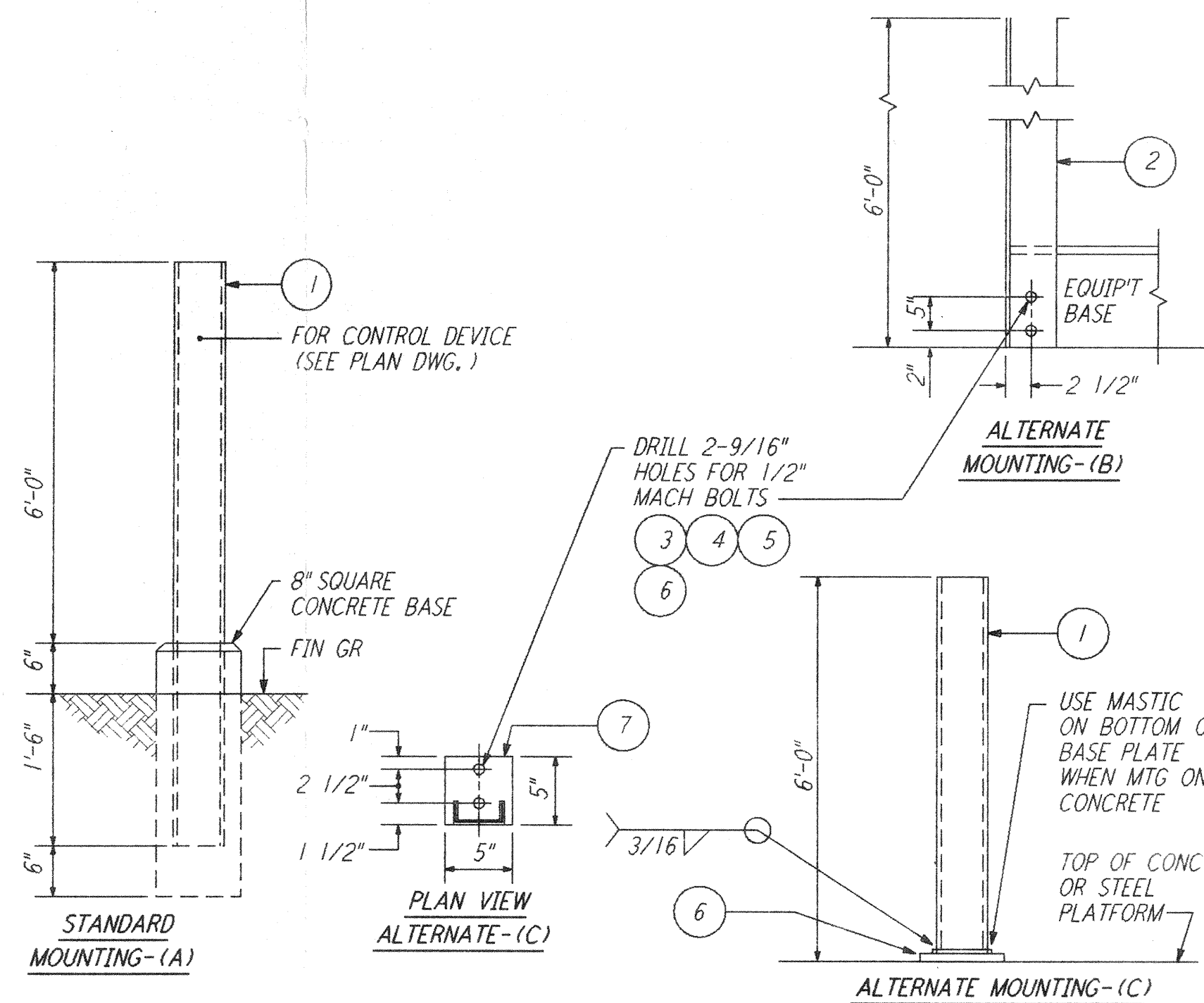
CONDUIT WALL SUPPORTED (EXTERIOR) (5) REF  
 N. T. S.



LIST OF MATERIAL

| ITEM NO. | QTY | DESCRIPTION                                     |
|----------|-----|---|
| 1        | 6'  | CHANNEL, ELECTRO-GALV. 12GA. 1 3/8" X 1 3/8"    |
| 2        | 2   | UNISTRUT P1000 CUT TO SUIT                      |
| 3        | 2   | PLATE, STEEL, ASTM A36-9 1/2" X 9 1/4" X 1/4"   |
| 4        | 4   | ROD, STEEL, THREADED, 3/8" X LENGTH AS REQUIRED |
| 4        | 4   | WASHER, STEEL, GALV, FLAT, 3/8"                 |
| 5        | 4   | NUT, STEEL, GALV, HEX, 3/8"                     |
| 6        | 1   | SEALANT, ADHESIVE, ALL WEATHER, GE*RTV-13       |

METAL SIDING MOUNTING PLATE FOR ELECTRICAL DEVICES (6) REF  
 N. T. S.

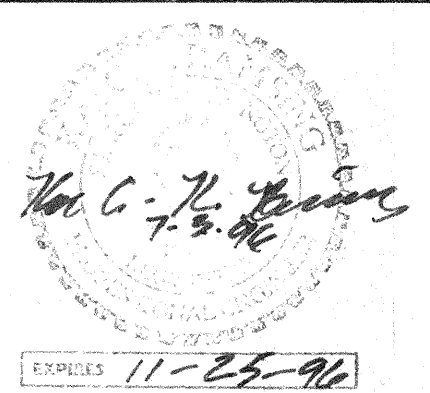


LIST OF MATERIAL

| ITEM NO. | QTY | DESCRIPTION  |
|----------|-----|--|
| 1        | AR  | CHANNEL, 4" X 5, 4 LBS HOT DIPPED GALV             |
| 2        | AR  | ANGLE BAR, 4" X 4" 1/4" HOT DIPPED GALV            |
| 3        | 2   | CONCRETE ANCHOR, 1/2"-13 X 1 1/2" LG GALV          |
| 4        | 2   | BOLT, 1/2"-13 X 1 1/2" LG HEX HD GALV              |
| 5        | 2   | LOCKWASHER, 1/2" SPRING SST                        |
| 6        | 1   | COLD GALV., TUBE #2RC                              |
| 7        | 1   | PLATE, STEEL 1/2" X 5" X 5" GALV (WELD TO CHANNEL) |

DEVICE MOUNTING STANCHION (7) REF  
 N. T. S.

ISSUED FOR CONSTRUCTION  
 DRAWN M. M. 6-25-96  
 CHECKED 7-3-96  
 ENGINEER 7-5-96  
 PROJ 7-8-96



100 WEST WALNUT STREET  
 PASADENA, CALIFORNIA



CALIFORNIA INSTITUTE OF TECHNOLOGY  
 MASSACHUSETTS INSTITUTE OF TECHNOLOGY

LASER INTERFEROMETER  
 GRAVITATIONAL-WAVE OBSERVATORY  
 SITE NO. 1 - HANFORD, WASHINGTON

|                    |              |                 |                |
|--------------------|--------------|-----------------|----------------|
| TITLE              | SCALE        | CONTRACT NUMBER | PROJECT NUMBER |
| ELECTRICAL DETAILS | NONE         | PP150969        | 8094           |
|                    | SHEET NUMBER | REVISIONS       |                |
|                    | WA-E-404     |                 |                |

This document and the design it covers are the property of PARSONS. They are loaned only with the borrower's expressed written agreement that they will not be reproduced, copied, loaned, exhibited, or used in any other way, except by written consent from PARSONS to the borrower.

This document and the design it covers are the property of PARSONS. They are loaned only with the borrower's expressed written agreement that they will not be reproduced, copied, loaned, exhibited, or used in any other way, except by written consent from PARSONS to the borrower.

| DRAWING NO. | DESCRIPTION | NO. | DATE | BY | CHKD | ENGR | PROJ | DESCRIPTION |
|-------------|-------------|-----|------|----|------|------|------|-------------|
|             |             |     |      |    |      |      |      |             |

E  
 D  
 C  
 B  
 A