

| CPB | COORDINATES | |
|-----|-------------|--------------|
| | NORTH | EAST |
| C1 | 410787.0908 | 1916109.3343 |
| C2 | 410826.6197 | 1916058.8095 |
| C3 | 410888.2819 | 1916012.8922 |
| C4 | 410981.3941 | 1915942.1169 |
| C5 | 410941.1299 | 1915888.2806 |

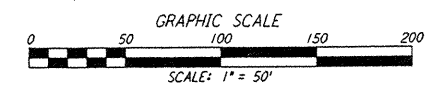
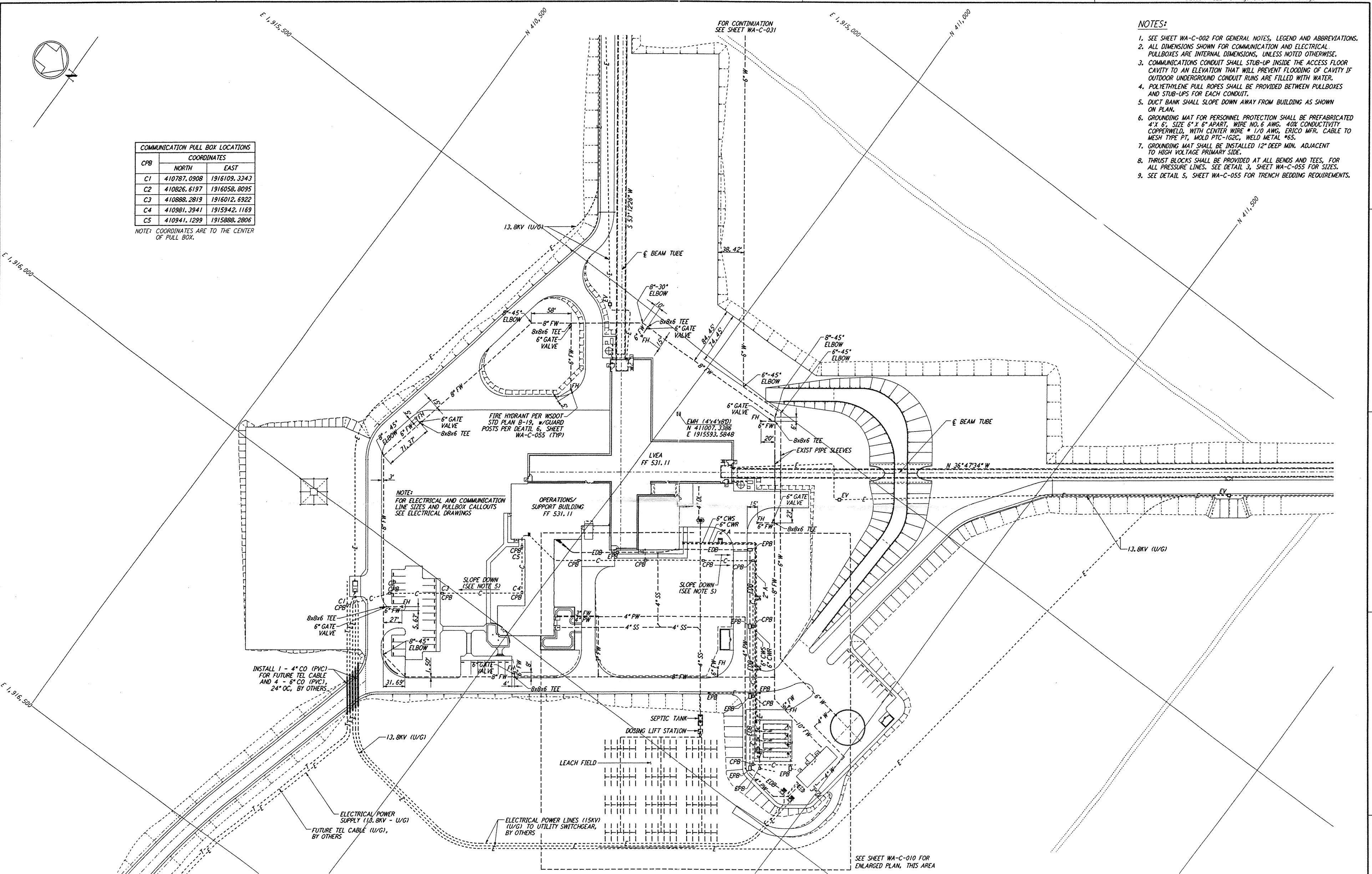
NOTE: COORDINATES ARE TO THE CENTER OF PULL BOX.

NOTES:

- SEE SHEET WA-C-002 FOR GENERAL NOTES, LEGEND AND ABBREVIATIONS.
- ALL DIMENSIONS SHOWN FOR COMMUNICATION AND ELECTRICAL PULLBOXES ARE INTERNAL DIMENSIONS, UNLESS NOTED OTHERWISE.
- COMMUNICATIONS CONDUIT SHALL STUB-UP INSIDE THE ACCESS FLOOR CAVITY TO AN ELEVATION THAT WILL PREVENT FLOODING OF CAVITY IF OUTDOOR UNDERGROUND CONDUIT RUNS ARE FILLED WITH WATER.
- POLYETHYLENE PULL ROPES SHALL BE PROVIDED BETWEEN PULLBOXES AND STUB-UPS FOR EACH CONDUIT.
- DUCT BANK SHALL SLOPE DOWN AWAY FROM BUILDING AS SHOWN ON PLAN.
- GROUNDING MAT FOR PERSONNEL PROTECTION SHALL BE PREFABRICATED 4' X 6', SIZE 6" X 6" APART, WIRE NO. 6 AWG, 40% CONDUCTIVITY COPPERWELD, WITH CENTER WIRE # 1/0 AWG, ERICO MFR. CABLE TO MESH TYPE PT, MOLD PTC-102C, WELD METAL #65.
- GROUNDING MAT SHALL BE INSTALLED 12" DEEP MIN. ADJACENT TO HIGH VOLTAGE PRIMARY SIDE.
- THRUST BLOCKS SHALL BE PROVIDED AT ALL BENDS AND TEES, FOR ALL PRESSURE LINES. SEE DETAIL 3, SHEET WA-C-055 FOR SIZES.
- SEE DETAIL 5, SHEET WA-C-055 FOR TRENCH BEDDING REQUIREMENTS.

not be reproduced, copied, loaned, exhibited, or used in any other way, except by written consent from PARSONS to the borrower.

This document and the design it covers are the property of PARSONS. They are loaned only with the borrower's expressed written agreement that they will



| NO. | DATE | BY | CHKD | ENGR | PROJ | DESCRIPTION |
|-----|----------|-----|------|------|------|---------------------------|
| B | 4/19/96 | WRB | MM | TDM | | FINAL DESIGN REVIEW |
| A | 10/31/95 | WRB | | | | PRELIMINARY DESIGN REVIEW |

| | |
|----------|-----|
| DRAWN | WRB |
| CHECKED | |
| ENGINEER | |
| PROJ | |

| |
|------------------------|
| 100 WEST WALNUT STREET |
| PASADENA, CALIFORNIA |

PARSONS

LIGO

CALIFORNIA INSTITUTE OF TECHNOLOGY
MASSACHUSETTS INSTITUTE OF TECHNOLOGY

LASER INTERFEROMETER
GRAVITATIONAL-WAVE OBSERVATORY
SITE NO. 1 - HANFORD, WASHINGTON

CIVIL
CORNER STATION
UTILITY PLAN

SCALE: 1" = 50'

CONTRACT NUMBER: PP150969
PROJECT NUMBER: 8094

WA - C - 009