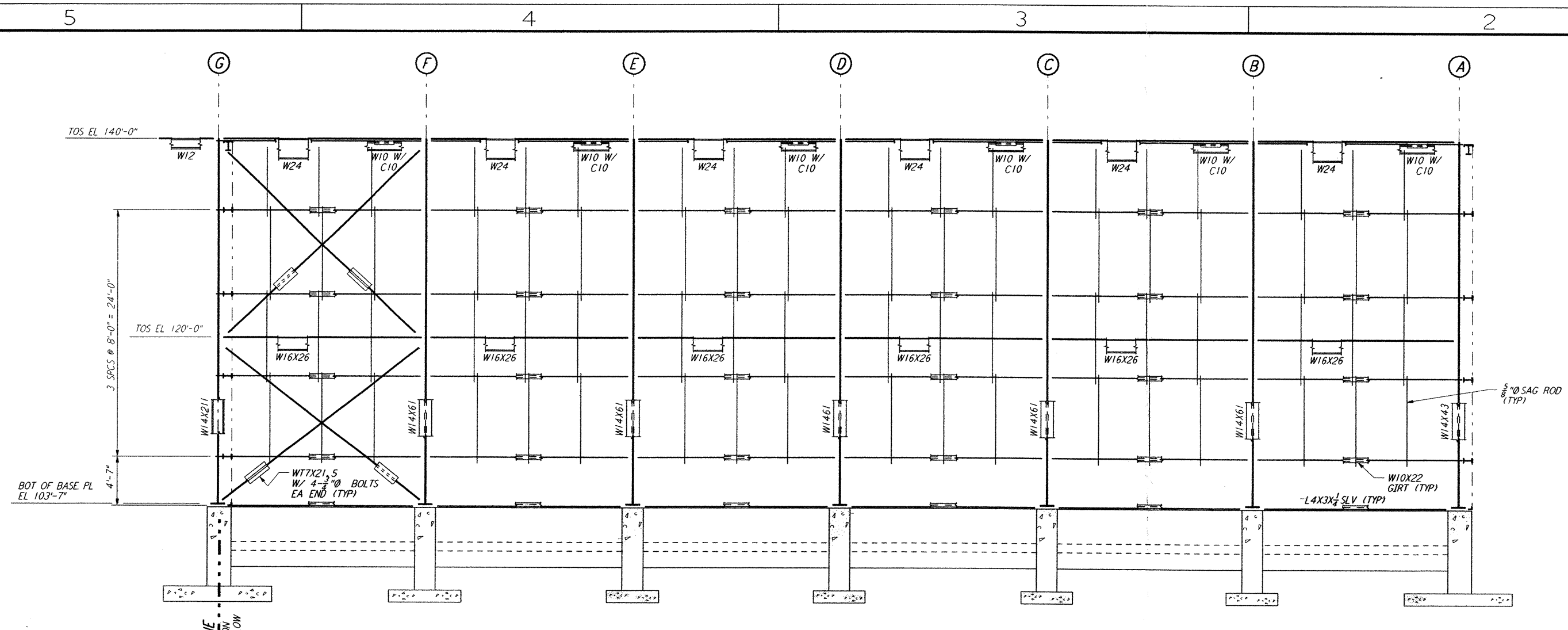
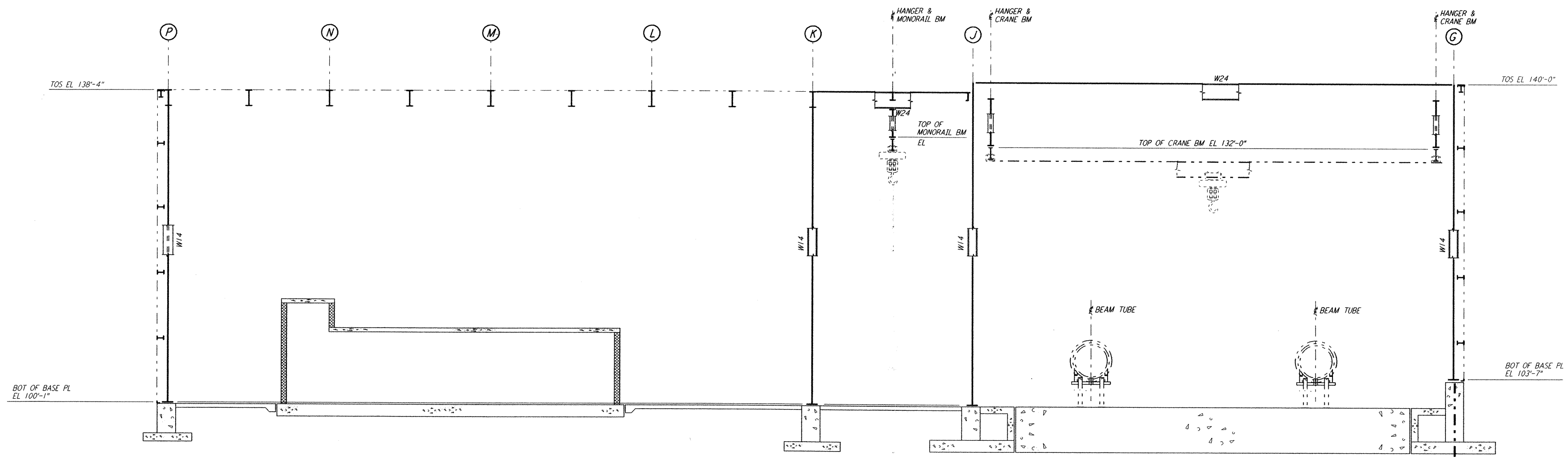


not be reproduced, copied, loaned, exhibited, or used in any other way, except by written consent from PARSONS to the borrower.

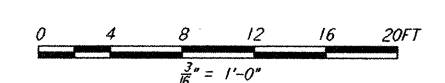
This document and the design it covers are the property of PARSONS. They are loaned only with the borrower's expressed written agreement that they will



PARTIAL ELEVATION AT COLUMN LINE 7  
 $\frac{3}{8}'' = 1'-0''$



PARTIAL ELEVATION AT COLUMN LINE 7  
 $\frac{3}{8}'' = 1'-0''$



NO.	DATE	APRD BY	DESCRIPTION OF REVISION
9			
8			
7			
6			
5			
4			
3			
2			
1			

NO.	DATE	APRD BY	ISSUE
A	10-31-95	TDM	PRELIMINARY DESIGN REVIEW
			ISSUED FOR

DATE	10-31-95
DRAWN	MCS
CHECKED	
ENGINEER	
PROJ MGR	

**PARSONS**  
 100 WEST WALNUT STREET  
 PASADENA, CALIFORNIA

**LIGO**  
 CALIFORNIA INSTITUTE OF TECHNOLOGY  
 MASSACHUSETTS INSTITUTE OF TECHNOLOGY

LASER INTERFEROMETER  
 GRAVITATIONAL-WAVE OBSERVATORY  
 SITE NO. 1 - HANFORD, WASHINGTON  
 TITLE: CORNER STATION (LVEA) FRAMING ELEVATIONS SHEET 3  
 AS NOTED PPI50969 8094  
**WA-S-110**