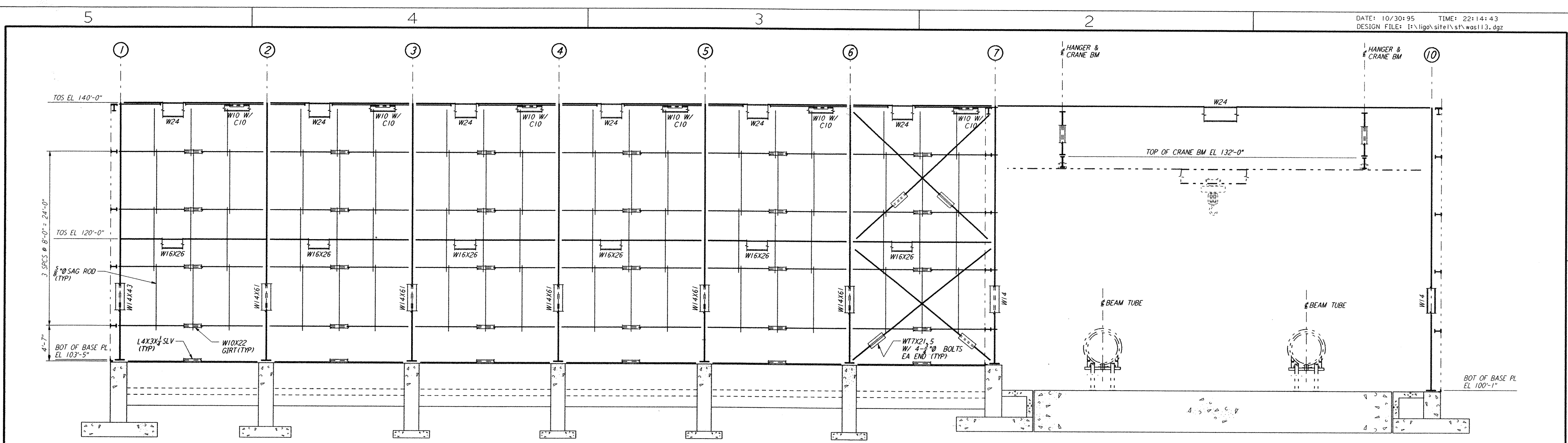
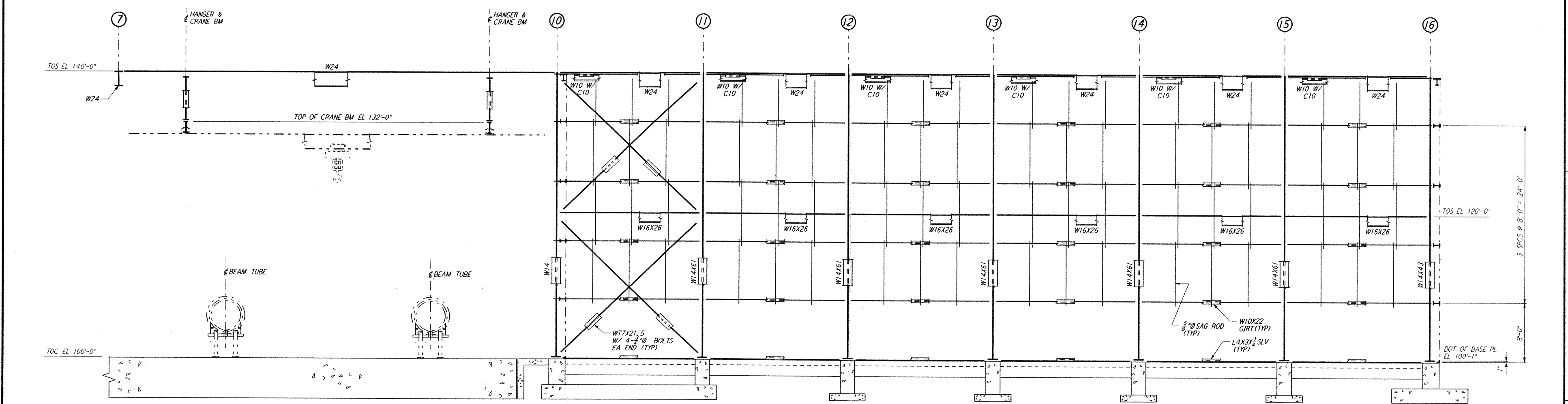


not be reproduced, copied, loaned, exhibited, or used in any other way, except by written consent from PARSONS to the borrower.

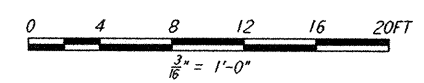
This document and the design it covers are the property of PARSONS. They are loaned only with the borrower's expressed written agreement that they will not be reproduced, copied, loaned, exhibited, or used in any other way, except by written consent from PARSONS to the borrower.



PARTIAL ELEVATION AT COLUMN LINE G
 1/8" = 1'-0"



PARTIAL ELEVATION AT COLUMN LINE H
 1/8" = 1'-0"



9		J		DATE	10-31-95		
8		H		DRAWN	MCS		
7		G		CHECKED			
6		F		ENGINEER			
5		E		PROJ MGR			
4		D					
3		C					
2		B					
1		A					
NO.	DATE	APRD BY	DESCRIPTION OF REVISION	NO.	DATE	APRD BY	ISSUED FOR
				A	10-31-95	TDM	PRELIMINARY DESIGN REVIEW

DATE	10-31-95
DRAWN	MCS
CHECKED	
ENGINEER	
PROJ MGR	

PARSONS
 100 WEST WALNUT STREET
 PASADENA, CALIFORNIA

LIGO
 CALIFORNIA INSTITUTE OF TECHNOLOGY
 MASSACHUSETTS INSTITUTE OF TECHNOLOGY

LIGO-D960476-A
 LASER INTERFEROMETER
 GRAVITATIONAL-WAVE OBSERVATORY
 SITE NO. 1 - HANFORD, WASHINGTON
 TITLE: CORNER STATION (LVEA) FRAMING ELEVATIONS SHEET 6
 SCALE: AS NOTED
 CONTRACT NUMBER: PP150969
 PROJECT NUMBER: 8094
 SHEET NUMBER: WA-S-113

Mon Oct 30 22:13:54 1995 S3-V18B2 J:\PLOTS\QUEUES\V18B2\ST113A.PRF