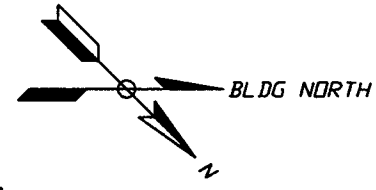
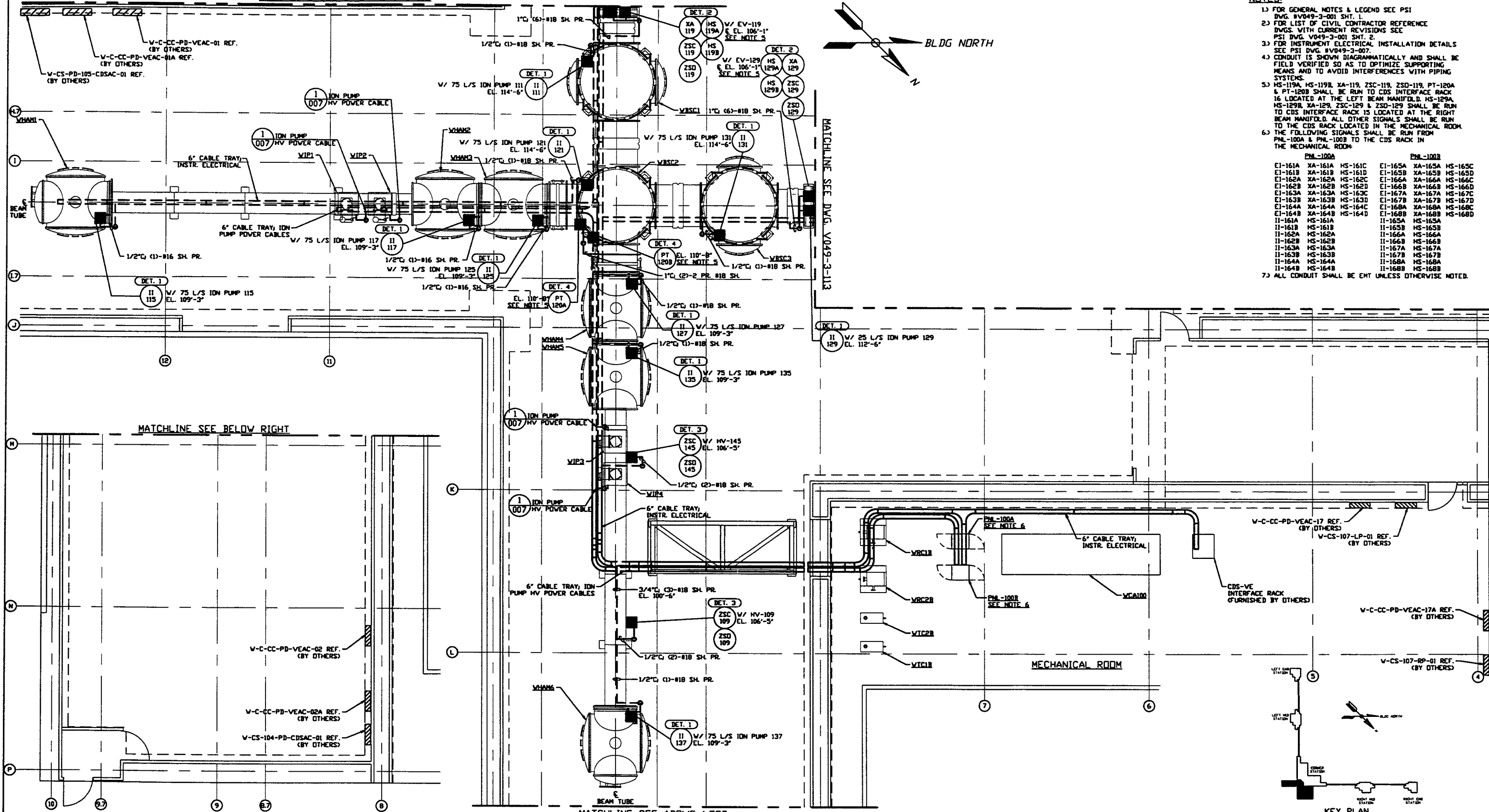


MATCHLINE SEE DWG. V049-3-112



- NOTES:**
- FOR GENERAL NOTES & LEGEND SEE PSI DWG. V049-3-001 SHT. 1.
 - FOR LIST OF CIVIL CONTRACTOR REFERENCE DWGS. WITH CURRENT REVISIONS SEE PSI DWG. V049-3-001 SMT. 2.
 - FOR INSTRUMENT ELECTRICAL INSTALLATION DETAILS SEE PSI DWG. V049-3-007.
 - CONDUIT IS SHOWN DIAGRAMMATICALLY AND SHALL BE FIELD VERIFIED SO AS TO OPTIMIZE SUPPORTING MEANS AND TO AVOID INTERFERENCES WITH PIPING SYSTEMS.
 - HS-119A, HS-119B, XA-119, ZSC-119, ZSD-119, PT-120A & PT-120B SHALL BE RUN TO CDS INTERFACE RACK 16 LOCATED AT THE LEFT BEAM MANIFOLD. HS-129A, HS-129B, XA-129, ZSC-129 & ZSD-129 SHALL BE RUN TO CDS INTERFACE RACK 15 LOCATED AT THE RIGHT BEAM MANIFOLD. ALL OTHER SIGNALS SHALL BE RUN TO THE CDS RACK LOCATED IN THE MECHANICAL ROOM.
 - THE FOLLOWING SIGNALS SHALL BE RUN FROM PNL-100A & PNL-100B TO THE CDS RACK IN THE MECHANICAL ROOM:
- | PNL-100A | | | PNL-100B | | |
|----------|---------|---------|----------|---------|---------|
| EI-161A | XA-161A | HS-161C | EI-165A | XA-165A | HS-165C |
| EI-161B | XA-161B | HS-161D | EI-165B | XA-165B | HS-165D |
| EI-162A | XA-162A | HS-162C | EI-166A | XA-166A | HS-166C |
| EI-162B | XA-162B | HS-162D | EI-166B | XA-166B | HS-166D |
| EI-163A | XA-163A | HS-163C | EI-167A | XA-167A | HS-167C |
| EI-163B | XA-163B | HS-163D | EI-167B | XA-167B | HS-167D |
| EI-164A | XA-164A | HS-164C | EI-168A | XA-168A | HS-168C |
| EI-164B | XA-164B | HS-164D | EI-168B | XA-168B | HS-168D |
| II-161A | HS-161A | | II-165A | HS-165A | |
| II-161B | HS-161B | | II-165B | HS-165B | |
| II-162A | HS-162A | | II-166A | HS-166A | |
| II-162B | HS-162B | | II-166B | HS-166B | |
| II-163A | HS-163A | | II-167A | HS-167A | |
| II-163B | HS-163B | | II-167B | HS-167B | |
| II-164A | HS-164A | | II-168A | HS-168A | |
| II-164B | HS-164B | | II-168B | HS-168B | |
- 7) ALL CONDUIT SHALL BE EMT UNLESS OTHERWISE NOTED.

VERTEX SECTION PLAN @ EL. 100'-0"

<p>PROPRIETARY AND CONFIDENTIAL</p> <p>THIS DOCUMENT CONTAINS PROPRIETARY INFORMATION BELONGING TO PROCESS SYSTEMS INTERNATIONAL, INC. OR ITS AFFILIATED COMPANIES AND SHALL BE USED ONLY FOR THE PURPOSE FOR WHICH IT WAS SUPPLIED. IT SHALL NOT BE COPIED, REPRODUCED OR OTHERWISE USED FOR ANY OTHER PURPOSE WITHOUT THE WRITTEN CONSENT OF PROCESS SYSTEMS INTERNATIONAL, INC. AND SHALL BE RETURNED UPON REQUEST.</p>	V049-3-112	INSTR. ELEC. PLAN WASHINGTON LEFT BEAM MANIFOLD																		
	V049-3-101	INSTRUMENT PLAN WASHINGTON VERTEX SECTION																		
	V049-3-007	INSTRUMENT ELECTRICAL INSTALLATION DETAILS																		
	V049-3-002	WASHINGTON OVERALL SITE PLAN	V049-3-123	CDS INTERFACE DIAGRAM																
V049-3-001	GENERAL NOTES & LEGEND	V049-3-122	PNL-100A & PNL-100B WIRING DIAGRAM																	
V049-0-013	P & I D WASHINGTON VERTEX SECTION	V049-3-113	INSTR. ELEC. PLAN WASHINGTON RIGHT BEAM MANIFOLD																	
	DWG. NO.	DESCRIPTION	DWG. NO.	DESCRIPTION																
		REFERENCE DRAWINGS																		

PROCESS SYSTEMS INTERNATIONAL, INC.
20 WALUP DR. WESTBOROUGH, MASSACHUSETTS 01581 USA

INSTRUMENT ELECTRICAL PLAN
LIGO VACUUM EQUIPMENT
WASHINGTON SITE
VERTEX SECTION

CAR FILE: V0493111 | SIZE: D | DWG. NO.: V049-3-111 | REV: 2

SCALE: 3/16" = 1' - 0" | SHEET: 1 OF 1

LIGO-D960557-02-V