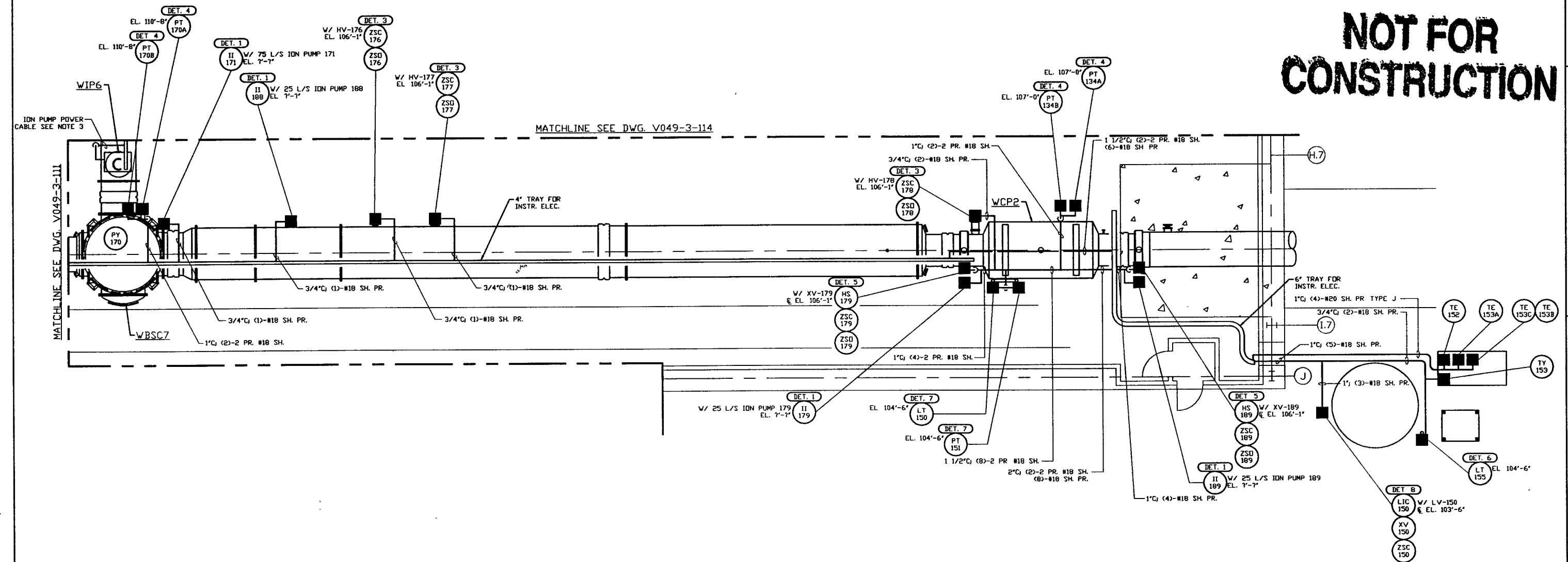


- NOTES:**
- 1) FOR INSTRUMENT ELECTRICAL INSTALLATION DETAILS SEE PSI DWG. V049-3-007
  - 2) CONDUIT IS SHOWN DIAGRAMMATICALLY AND SHALL BE FIELD VERIFIED SO AS TO OPTIMIZE SUPPORTING MEANS AND TO AVOID INTERFERENCES WITH PIPING SYSTEMS
  - 3) ION PUMP POWER CABLES SHALL BE RUN IN 2" CABLE CHANNEL FROM ION PUMP DOWN TO 4' TRAY LOCATED UNDER BEAM TUBE

# NOT FOR CONSTRUCTION



- LEGEND**
- INSTRUMENT ELECTRICAL CONNECTION
  - XX INSTRUMENT IDENTIFICATION
  - (DET. X) INSTALLATION DETAIL SEE NOTE 1

LIGO-D960559-00-V

DWG. NO.	DESCRIPTION	DWG. NO.	DESCRIPTION
V049-3-111	INSTR. ELEC. PLAN WASHINGTON VERTEX SECTION		
V049-3-103	INSTRUMENT PLAN WASHINGTON RIGHT BEAM MANIFOLD		
V049-3-007	INSTRUMENT ELECTRICAL INSTALLATION DETAILS		
V049-3-002	WASHINGTON OVERALL SITE PLAN		
V049-3-001	GENERAL NOTES & LEGEND	V049-3-123	CDS INTERFACE DIAGRAM
V049-0-015	P & I D WASHINGTON RIGHT BEAM MANIFOLD	V049-3-114	INSTR. ELEC. PLAN WASHINGTON DIAGONAL SECTION

REV	DESCRIPTION	CHKD	DRWN	DATE	DCDR
0	ISSUE FOR FDR			04.26.96	0129

**PROCESS SYSTEMS INTERNATIONAL INC.**  
20 WALNUP DR. WESTBOROUGH, MASSACHUSETTS 01581 USA

**INSTRUMENT ELECTRICAL PLAN**  
LIGO VACUUM EQUIPMENT  
WASHINGTON SITE  
RIGHT BEAM MANIFOLD

CAD FILE: V0493113  
SIZE: D  
DWG. NO.: V049-3-113  
REV: 0

SCALE: 3/16" = 1' - 0"  
SHEET: 1 OF 1