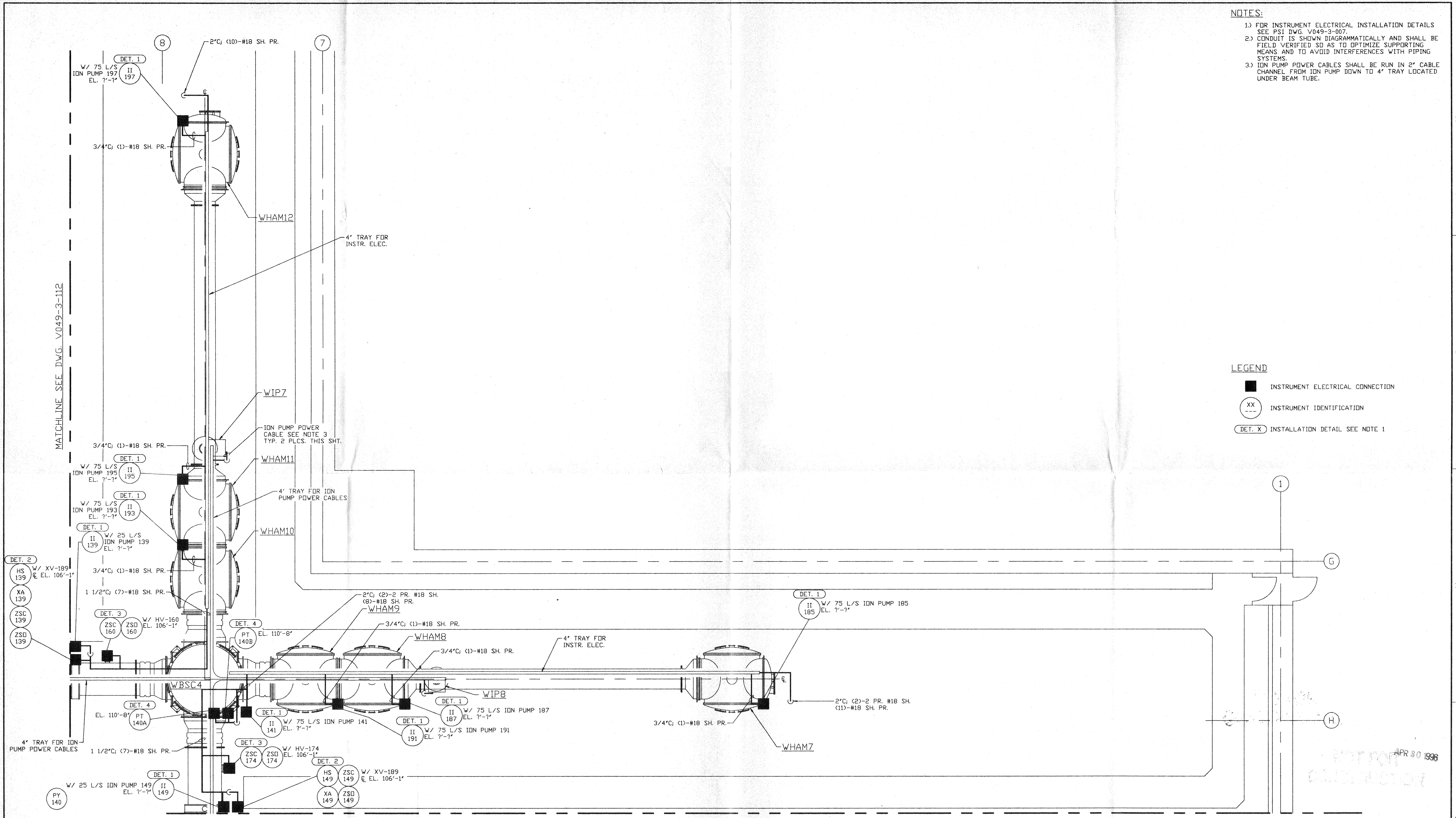


NOTES:

- 1.) FOR INSTRUMENT ELECTRICAL INSTALLATION DETAILS SEE PSI DWG. V049-3-007.
- 2.) CONDUIT IS SHOWN DIAGRAMMATICALLY AND SHALL BE FIELD VERIFIED SO AS TO OPTIMIZE SUPPORTING MEANS AND TO AVOID INTERFERENCES WITH PIPING SYSTEMS.
- 3.) ION PUMP POWER CABLES SHALL BE RUN IN 2" CABLE CHANNEL FROM ION PUMP DOWN TO 4' TRAY LOCATED UNDER BEAM TUBE.

LEGEND

- INSTRUMENT ELECTRICAL CONNECTION
- ⊙ XX INSTRUMENT IDENTIFICATION
- DET. X INSTALLATION DETAIL SEE NOTE 1



NOT FOR CONSTRUCTION
APR 30 1998

MATCHLINE SEE DWG. V049-3-113

0960560-00-V

<p>PROPRIETARY AND CONFIDENTIAL</p> <p>THIS DOCUMENT CONTAINS PROPRIETARY INFORMATION BELONGING TO PROCESS SYSTEMS INTERNATIONAL, INC. OR ITS AFFILIATED COMPANIES AND SHALL BE USED ONLY FOR THE PURPOSE FOR WHICH IT WAS SUPPLIED. IT SHALL NOT BE COPIED, REPRODUCED OR OTHERWISE USED, NOR SHALL SUCH INFORMATION BE FURNISHED IN WHOLE OR IN PART TO OTHERS EXCEPT IN ACCORDANCE WITH THE TERMS OF ANY AGREEMENT UNDER WHICH IT WAS SUPPLIED OR WITH THE PRIOR WRITTEN CONSENT OF PROCESS SYSTEMS INTERNATIONAL, INC. AND SHALL BE RETURNED UPON REQUEST.</p>		<p>V049-3-112 INSTR. ELEC. PLAN WASHINGTON LEFT BEAM MANIFOLD</p> <p>V049-3-104 INSTRUMENT PLAN WASHINGTON DIAGONAL SECTION</p> <p>V049-3-007 INSTRUMENT ELECTRICAL INSTALLATION DETAILS</p> <p>V049-3-002 WASHINGTON OVERALL SITE PLAN</p> <p>V049-3-001 GENERAL NOTES & LEGEND</p> <p>V049-0-014 P & I D WASHINGTON DIAGONAL SECTION</p>	<p>V049-3-123 CDS INTERFACE DIAGRAM</p> <p>V049-3-113 INSTR. ELEC. PLAN WASHINGTON RIGHT BEAM MANIFOLD</p>	<p>UNLESS OTHERWISE SPECIFIED DIMENSIONS ARE IN INCHES</p> <p>TOLERANCES:</p> <p>FRACTIONAL ±</p> <p>ANGULAR/ARCH 10°-30° BEND ±2°</p> <p>TWO PLACE DECIMAL ± .01</p> <p>THREE PLACE DECIMAL ± .005</p> <p>FINISHED SURFACE RMS</p> <p>BREAK CORNERS IN OUT</p> <p>REMOVE ALL BURRS</p>	<p>DO NOT SCALE THIS DRAWING</p> <p>USED ON:</p> <p>NEXT ASS'Y:</p>	<p>0 ISSUE FOR FDR</p> <p>REV DESCRIPTION</p> <p>ISSUE DESCRIPTION</p>	<p>04.26.96 0129</p> <p>CHKD DRWN DATE DECH</p>	<p>PROCESS SYSTEMS INTERNATIONAL, INC.</p> <p>20 WALKUP DR. WESTBOROUGH, MASSACHUSETTS 01581 USA</p> <p>INSTRUMENT ELECTRICAL PLAN</p> <p>LIGO VACUUM EQUIPMENT</p> <p>WASHINGTON SITE</p> <p>DIAGONAL SECTION</p>	<p>CAD FILE V0493114</p> <p>SIZE D</p> <p>DWG NO. V049-3-114</p> <p>SCALE 3/16" = 1' - 0"</p>	<p>REV. 0</p> <p>SHEET 1 OF 1</p>
---	--	--	--	---	---	--	---	--	---	-----------------------------------

REFERENCE DRAWINGS

8 7 6 5 4 3 2 1