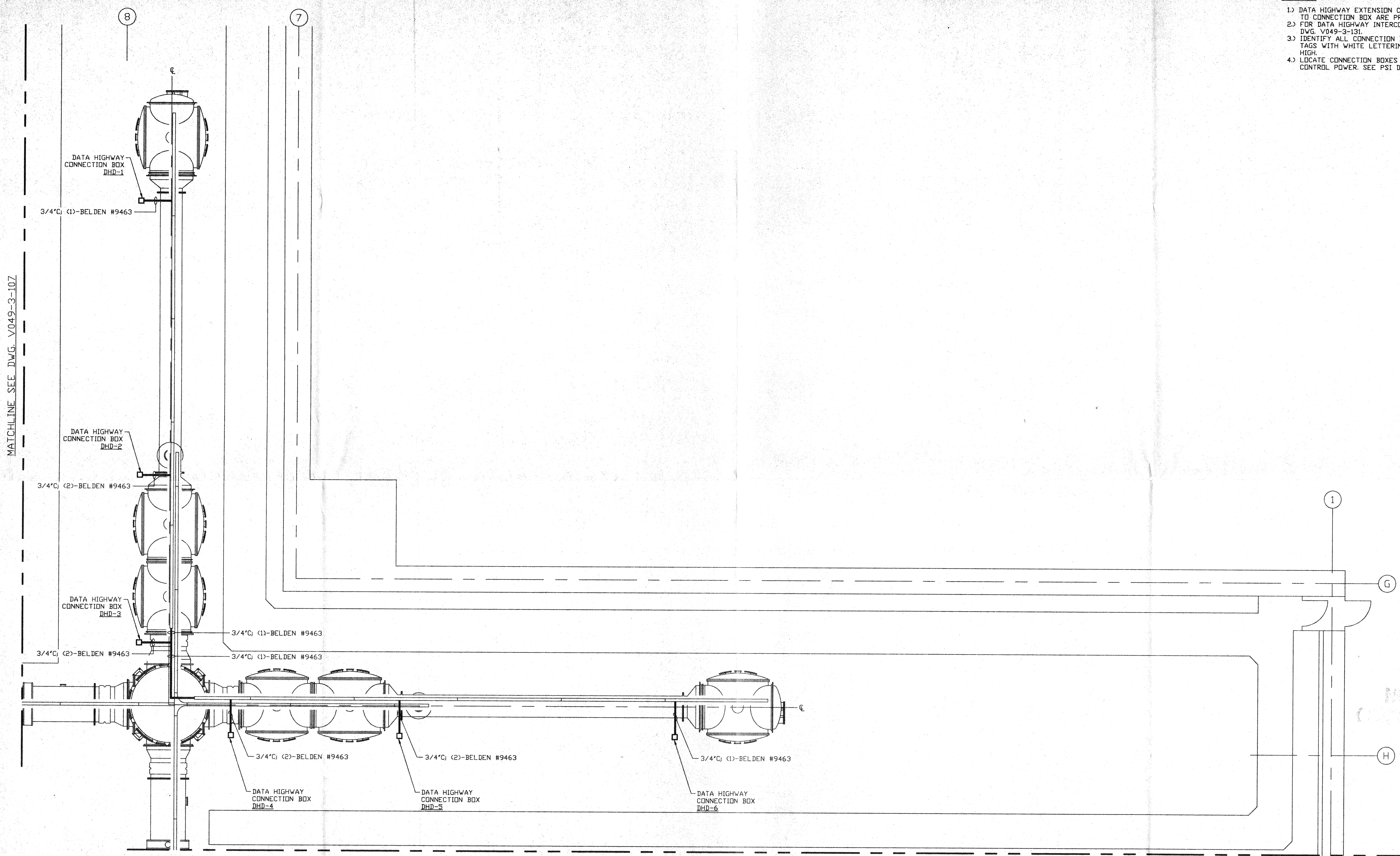


- NOTES:**
- 1) DATA HIGHWAY EXTENSION CABLES FOR BAKEDOUT CART TO CONNECTION BOX ARE PROVIDED W/CART.
 - 2) FOR DATA HIGHWAY INTERCONNECTING WIRING SEE DWG. V049-3-131.
 - 3) IDENTIFY ALL CONNECTION BOXES WITH BLACK PHENOLIC TAGS WITH WHITE LETTERING. LETTERING SHALL BE 3/8" HIGH.
 - 4) LOCATE CONNECTION BOXES ADJACENT TO BAKEDOUT CART CONTROL POWER. SEE PSI DWG. HV049-3-119.



MATCHLINE SEE DWG. V049-3-107

MATCHLINE SEE DWG. V049-3-108

NOT FOR CONSTRUCTION

APR 30 1996

<p>PROPRIETARY AND CONFIDENTIAL</p> <p>THIS DOCUMENT CONTAINS PROPRIETARY INFORMATION BELONGING TO PROCESS SYSTEMS INTERNATIONAL, INC. OR ITS AFFILIATED COMPANIES AND SHALL BE USED ONLY FOR THE PURPOSE FOR WHICH IT WAS SUPPLIED. IT SHALL NOT BE COPIED, REPRODUCED OR OTHERWISE USED, NOR SHALL SUCH INFORMATION BE FURNISHED IN WHOLE OR IN PART TO OTHERS EXCEPT IN ACCORDANCE WITH THE TERMS OF ANY AGREEMENT UNDER WHICH IT WAS SUPPLIED OR WITH THE PRIOR WRITTEN CONSENT OF PROCESS SYSTEMS INTERNATIONAL, INC. AND SHALL BE RETURNED UPON REQUEST.</p>		<p>V049-3-131 DATA HIGHWAY INTERCONNECTION DIAGRAM</p> <p>V049-3-119 POWER PLAN DIAGONAL SECTION</p> <p>V049-3-109 CABLE TRAY PLAN DIAGONAL SECTION</p> <p>V049-3-002 WASHINGTON OVERALL SITE PLAN</p> <p>V049-3-001 GENERAL NOTES & LEGEND</p>	<p>UNLESS OTHERWISE SPECIFIED DIMENSIONS ARE IN INCHES</p> <p>TOLERANCES:</p> <ul style="list-style-type: none"> FRACTIONAL ± ANGULAR MACH ±0°-30' BEND ±2' TWO PLACE DECIMAL ± .01 THREE PLACE DECIMAL ± .005 FINISHED SURFACE RMS BREAK CORNERS IN OUT REMOVE ALL BURRS 	<p>DD NOT SCALE THIS DRAWING 0 ISSUE FOR FDR</p> <p>USED ON: REV DESCRIPTION</p> <p>NEXT ASS'Y: ISSUE DESCRIPTION</p>	<p>04.26.96 0129</p> <p>CHKD DRWN DATE DEQ#</p>	<p>D960573-00-V</p> <p>PROCESS SYSTEMS INTERNATIONAL INC. 20 WALKUP DR. WESTBOROUGH, MASSACHUSETTS 01581 USA</p> <p>DATA HIGHWAY PLAN LIGO VACUUM EQUIPMENT WASHINGTON SITE DIAGONAL SECTION</p> <p>CAD FILE V0493130 SIZE D DWG. NO. V049-3-130 REV. 0</p> <p>SCALE 3/16" = 1' - 0" SHEET 1 OF 1</p>
---	--	---	--	---	---	---

8 7 6 5 4 3 2 1