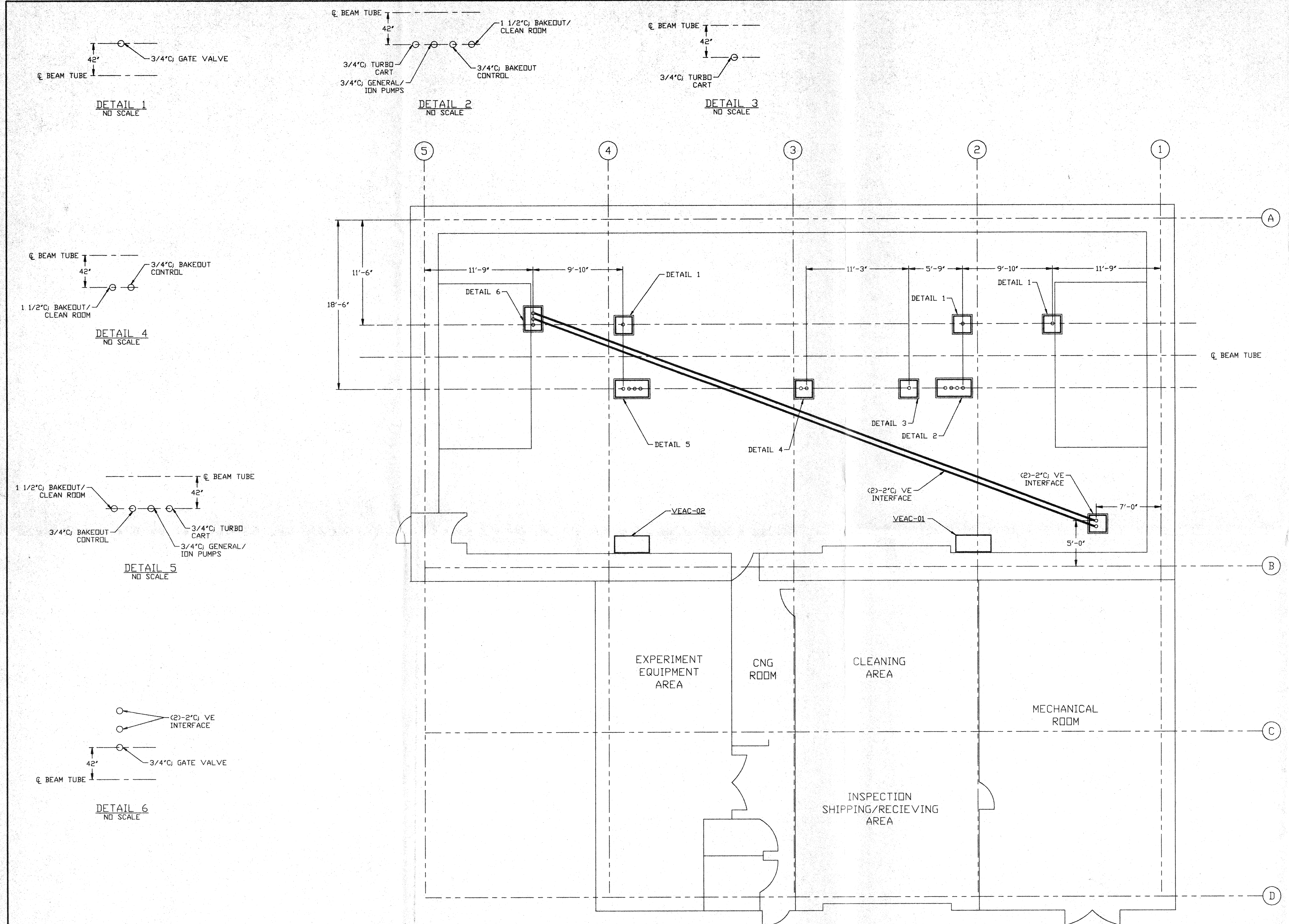


- NOTES:**
- 1.) PROVIDE PULL TAPE IN EACH CONDUIT.
 - 2.) ALL UNDERGROUND INSTALLATION AND DETAILS ARE BY OTHERS.
 - 3.) POWER SOURCE SHALL BE AS FOLLOWS:
 - A) BAKEDOUT/CLEAN ROOM 480/277VAC
 - B) GATE VALVE 480/277VAC
 - C) GENERAL/ION PUMPS 120VAC
 - D) BAKEDOUT CONTROL 120VAC
 - E) TURBD CART 208/120VAC
 - 4.) FOR EQUIPMENT POWER REQUIREMENTS, REFER TO PSI DOCUMENT #V049-1-047.



- LEGEND:**
- VACUUM EQUIPMENT INTERFACE CONDUIT
 - POWER STATION LOCATION
 - STUB-UP LOCATIONS

0960579-00-V

APR 30 1996

PROPRIETARY AND CONFIDENTIAL
 THIS DOCUMENT CONTAINS PROPRIETARY INFORMATION BELONGING TO PROCESS SYSTEMS INTERNATIONAL, INC. OR ITS AFFILIATED COMPANIES AND SHALL BE USED ONLY FOR THE PURPOSE FOR WHICH IT WAS SUPPLIED. IT SHALL NOT BE COPIED, REPRODUCED OR OTHERWISE USED, NOR SHALL SUCH INFORMATION BE FURNISHED IN WHOLE OR IN PART TO OTHERS EXCEPT IN ACCORDANCE WITH THE TERMS OF ANY AGREEMENT UNDER WHICH IT WAS SUPPLIED OR WITH THE PRIOR WRITTEN CONSENT OF PROCESS SYSTEMS INTERNATIONAL, INC. AND SHALL BE RETURNED UPON REQUEST.

DWG. NO.	DESCRIPTION	DWG. NO.	DESCRIPTION

UNLESS OTHERWISE SPECIFIED DIMENSIONS ARE IN INCHES
 TOLERANCES:
 FRACTIONAL ±
 ANGULAR ±0°-30' BEND ±2°
 TWO PLACE DECIMAL ±.01
 THREE PLACE DECIMAL ±.005
 FINISHED SURFACE RMS
 BREAK CORNERS IN OUT
 REMOVE ALL BURRS

DO NOT SCALE THIS DRAWING	0	ISSUE FOR FDR	D.W.M. P.S. J.F.W.	04.26.96	0129	
USED ON:	REV	DESCRIPTION	CHKD	DRWN	DATE	DEO#
NEXT ASS'Y:		ISSUE DESCRIPTION				

PROCESS SYSTEMS INTERNATIONAL, INC.
 20 WALKUP DR. WESTBOROUGH, MASSACHUSETTS 01581 USA

ELECTRICAL CONDUITSTUB-UP PLAN
 LIGO VACUUM EQUIPMENT
 WASHINGTON SITE
 LEFT MID STATION

CAD FILE: V0493205
 SIZE: D
 DWG. NO.: V049-3-205
 REV: 0

SCALE: 3/16" = 1' - 0"
 SHEET: 1 OF 1