

PROPRIETARY AND CONFIDENTIAL
 THIS DOCUMENT CONTAINS PROPRIETARY INFORMATION BELONGING TO PROCESS SYSTEMS INTERNATIONAL, INC. OR ITS AFFILIATED COMPANIES AND SHALL BE USED ONLY FOR THE PURPOSE FOR WHICH IT WAS SUPPLIED. IT SHALL NOT BE COPIED, REPRODUCED OR OTHERWISE USED, NOR SHALL SUCH INFORMATION BE FURNISHED IN WHOLE OR IN PART TO OTHERS EXCEPT IN ACCORDANCE WITH THE TERMS OF ANY AGREEMENT UNDER WHICH IT WAS SUPPLIED OR WITH THE PRIOR WRITTEN CONSENT OF PROCESS SYSTEMS INTERNATIONAL, INC. AND SHALL BE RETURNED UPON REQUEST.

DWG. NO.	DESCRIPTION	DWG. NO.	DESCRIPTION
8		7	
	REFERENCE DRAWINGS		
		6	
		5	
		4	
		3	
		2	
		1	

UNLESS OTHERWISE SPECIFIED
 DIMENSIONS ARE IN INCHES
 TOLERANCES:
 FRACTIONAL ±
 ANGULAR/RADIUS ±0°-30' BEND ±2°
 TWO PLACE DECIMAL ±.01
 THREE PLACE DECIMAL ±.005
 FINISHED SURFACE: RMS
 BREAK CORNERS IN: OUT:
 REMOVE ALL BURRS

DO NOT SCALE THIS DRAWING
 USED ON:
 NEXT ASSY:

P1 PRELIMINARY
 REV DESCRIPTION

03.06.96 0084
 CHKD DRWN DATE DE#

ISSUE DESCRIPTION

PROCESS SYSTEMS INTERNATIONAL, INC.
 20 WALKUP DR. WESTBOROUGH, MASSACHUSETTS 01581 USA

CDS INTERFACE DIAGRAM
 LIGO VACUUM EQUIPMENT
 WASHINGTON SITE
 LEFT MID STATION

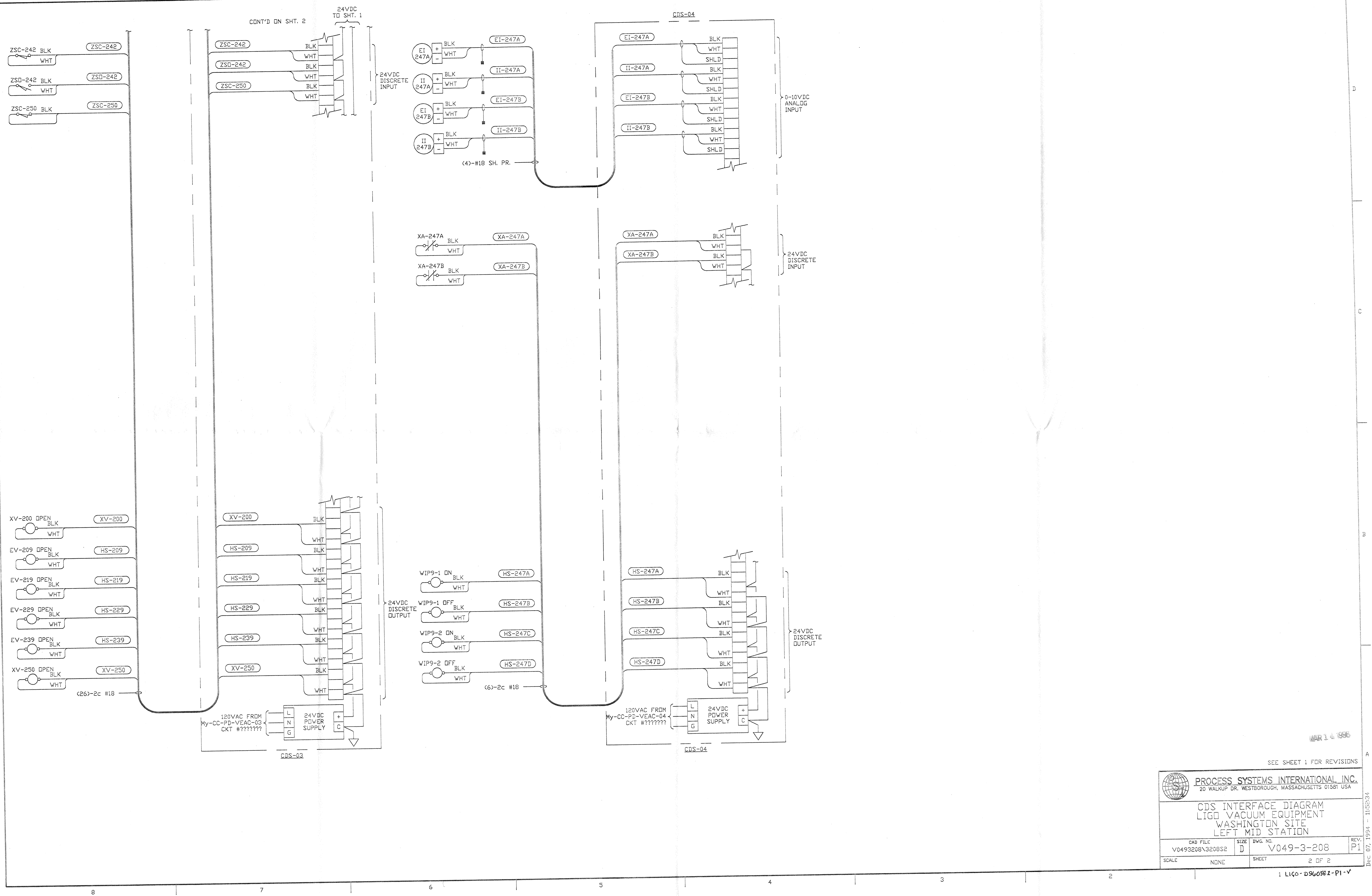
CAD FILE: V0493208\3208S1
 SIZE: D
 DWG. NO.: V049-3-208
 REV: P1

SCALE: NONE SHEET: 1 OF 2

Dec 07, 1994 - 115227

Date Received: 3/19/96	LIGO: D960582-P1-V Contractor #: V049-3-208
TIM #	LIGO-
Date: / /	Approved:
TDM #	LIGO-
Date: / /	Approved:
Client Transmittal	LIGO-
Date: / /	Approved:

MAR 14 1996



MAR 1 1995

SEE SHEET 1 FOR REVISIONS

PROCESS SYSTEMS INTERNATIONAL INC. 20 WALKUP DR. WESTBOROUGH, MASSACHUSETTS 01581 USA			
CDS INTERFACE DIAGRAM LIGO VACUUM EQUIPMENT WASHINGTON SITE LEFT MID STATION			
CAD FILE	SIZE	DWG. NO.	REV.
V0493208\3208S2	D	V049-3-208	P1
SCALE	NONE	SHEET	2 OF 2