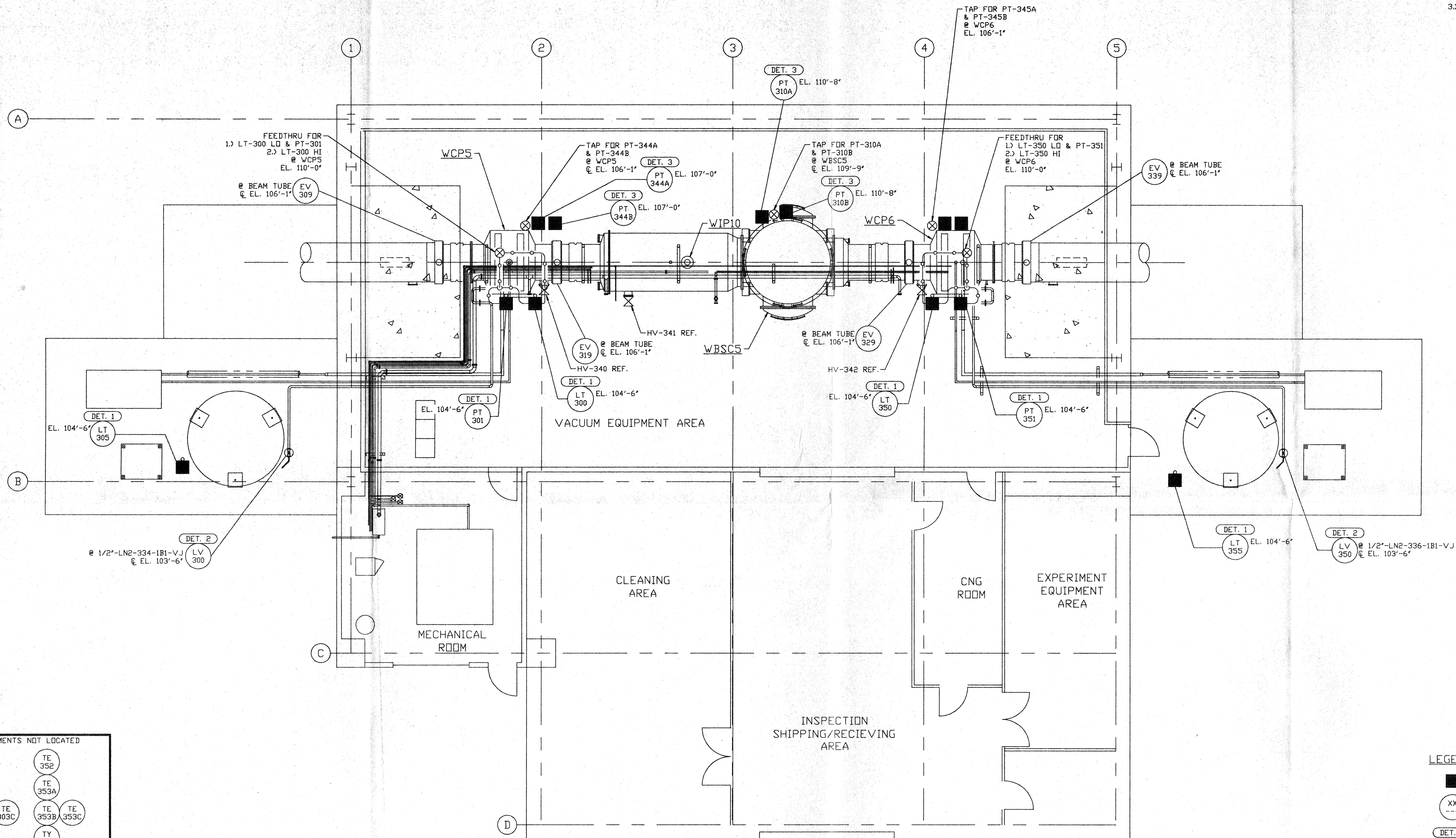


NOTES:

- 1) FOR INSTRUMENT INSTALLATION DETAILS SEE PSI DWG. #V049-3-008.
- 2) ALL INSTRUMENT AIR & PROCESS TUBING SHALL BE 3/8" O.D. x .049 THK SEAMLESS SSTL, TYPE 316.
- 3) TUBING ROUTING SHOWN ON PLAN IS DIAGRAMMATICAL AND SHALL BE FIELD VERIFIED SO AS TO OPTIMIZE SUPPORTING MEANS AND TO AVOID INTERFERENCES WITH CONDUIT & PIPING SYSTEMS.



NOT FOR CONSTRUCTION

INSTRUMENTS NOT LOCATED

- | | |
|---------|---------|
| TE 302 | TE 352 |
| TE 303A | TE 353A |
| TE 303B | TE 353B |
| TE 303C | TE 353C |
| TY 303 | TY 353 |
| FE 304 | FE 354 |
| FI 304 | FI 354 |
| PCV 310 | |

LEGEND

- INSTRUMENT LOCATION
- XX INSTRUMENT IDENTIFICATION
- DET. X INSTALLATION DETAIL (SEE NOTE 1)
- ⊗ PROCESS TAP
- PROCESS TUBING (SEE NOTE 2)

D960583-00-V

APR 30 1996

PROPRIETARY AND CONFIDENTIAL		THIS DOCUMENT CONTAINS PROPRIETARY INFORMATION BELONGING TO PROCESS SYSTEMS INTERNATIONAL, INC. OR ITS AFFILIATED COMPANIES AND SHALL BE USED ONLY FOR THE PURPOSE FOR WHICH IT WAS SUPPLIED. IT SHALL NOT BE COPIED, REPRODUCED OR OTHERWISE USED, NOR SHALL SUCH INFORMATION BE FURNISHED IN WHOLE OR IN PART TO OTHERS EXCEPT IN ACCORDANCE WITH THE TERMS OF ANY AGREEMENT UNDER WHICH IT WAS SUPPLIED OR WITH THE PRIOR WRITTEN CONSENT OF PROCESS SYSTEMS INTERNATIONAL, INC. AND SHALL BE RETURNED UPON REQUEST.		UNLESS OTHERWISE SPECIFIED DIMENSIONS ARE IN INCHES. TOLERANCES: FRACTIONAL ± ANGULAR/MACH 40°-30° BEND 42° TWO PLACE DECIMAL ± .01 THREE PLACE DECIMAL ± .005 FINISHED SURFACE RMS BREAK CORNERS 1/16" DUTY REMOVE ALL BURRS		DD NOT SCALE THIS DRAWING 0 ISSUE FOR FDR		04.26.96 0129		PROCESS SYSTEMS INTERNATIONAL INC. 20 WALKUP DR. WESTBOROUGH, MASSACHUSETTS 01581 USA	
V049-5-004 EQUIP. ARRANGEMENT WASHINGTON RIGHT MID STATION		V049-3-008 INSTRUMENT INSTALLATION DETAILS		V049-3-002 WASHINGTON OVERALL SITE PLAN		V049-3-001 GENERAL NOTES & LEGEND		V049-0-016 P & I D WASHINGTON RIGHT MID STATION		INSTRUMENT PLAN LIGO VACUUM EQUIPMENT WASHINGTON SITE RIGHT MID STATION	
DWG. NO.	DESCRIPTION	DWG. NO.	DESCRIPTION	DWG. NO.	DESCRIPTION	DWG. NO.	DESCRIPTION	CHKD	DRWN	DATE	DESD
NEXT ASS'Y:		REV		ISSUE DESCRIPTION		SCALE		SHEET		REV	
						3/16" = 1' - 0"		1 OF 1		0	