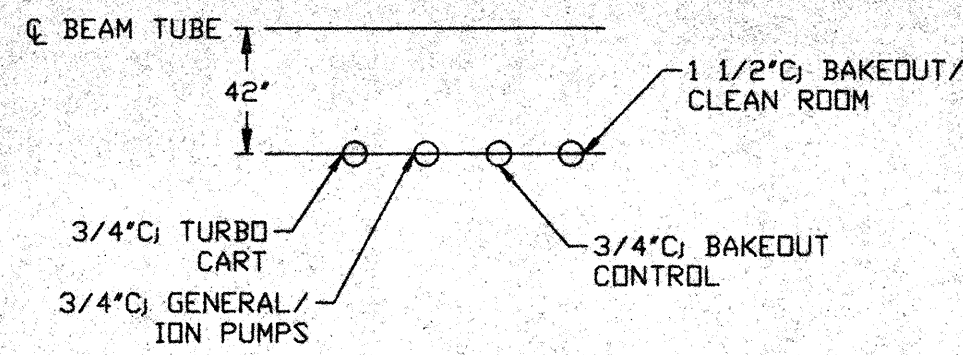
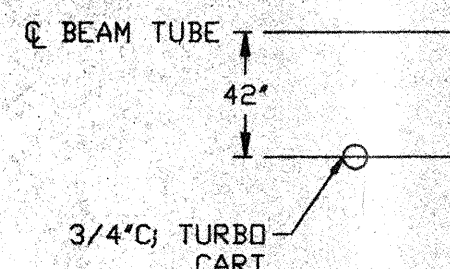


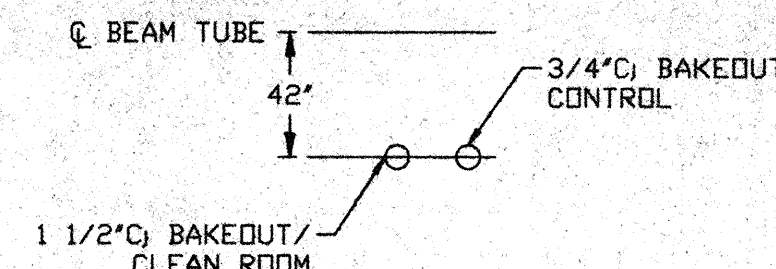
DETAIL 1
NO SCALE



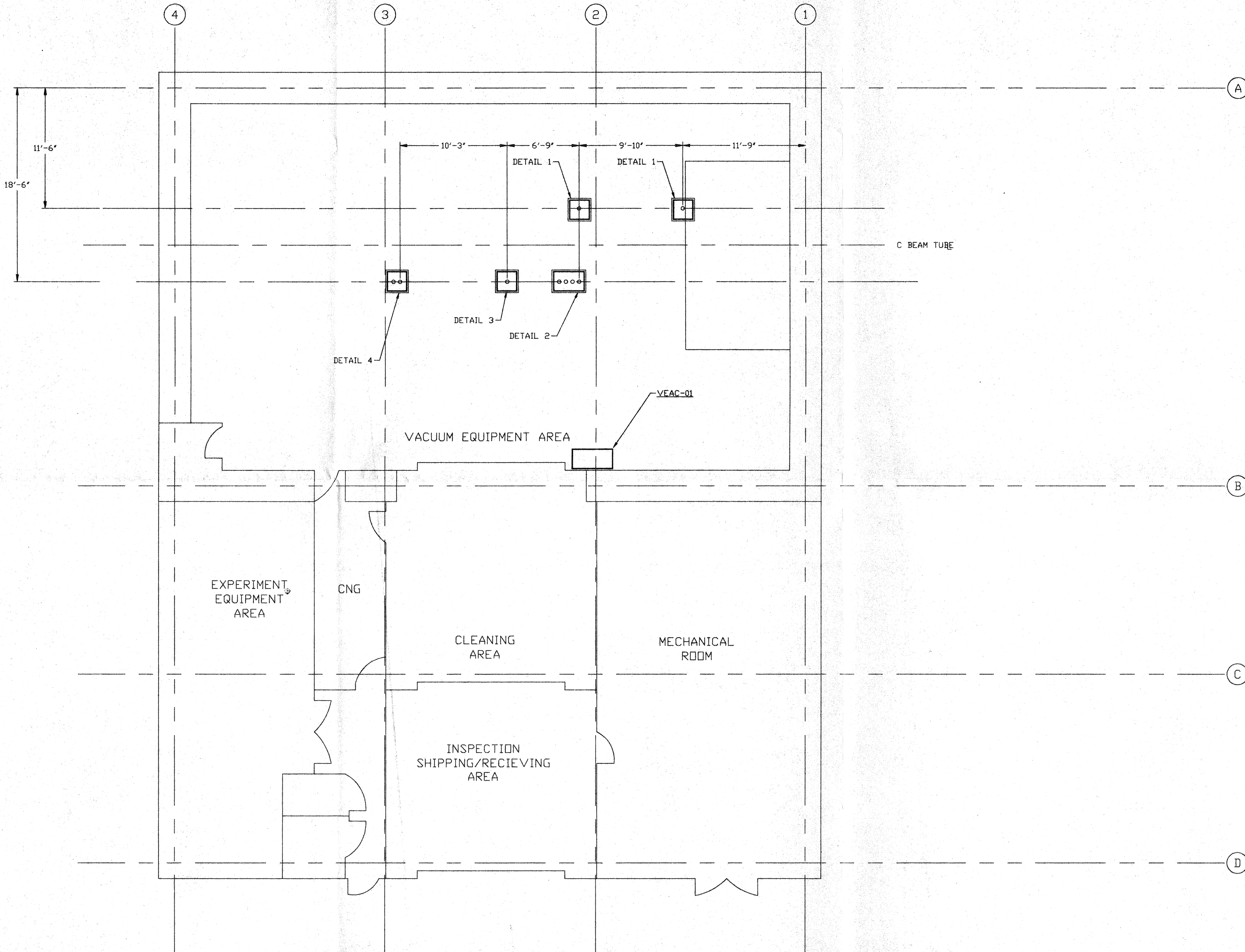
DETAIL 2
NO SCALE



DETAIL 3
NO SCALE



DETAIL 4
NO SCALE



- NOTES:**
- 1.) PROVIDE PULL TAPE IN EACH CONDUIT.
 - 2.) ALL UNDERGROUND INSTALLATION AND DETAILS ARE BY OTHERS.
 - 3.) POWER SOURCE SHALL BE AS FOLLOWS:
 - A) BAKEOUT/CLEAN ROOM 480/277VAC
 - B) GATE VALVE 480/277VAC
 - C) GENERAL/ION PUMPS 120VAC
 - D) BAKEOUT CONTROL 120VAC
 - E) TURBO CART 208/120VAC
 - 4.) FOR EQUIPMENT POWER REQUIREMENTS, REFER TO PSI DOCUMENT #V049-1-047.

NOT FOR CONSTRUCTION

- LEGEND:**
- POWER STATION LOCATION
 - STUB-UP LOCATIONS

APR 30 1996

D960595-00-V

PROPRIETARY AND CONFIDENTIAL
THIS DOCUMENT CONTAINS PROPRIETARY INFORMATION BELONGING TO PROCESS SYSTEMS INTERNATIONAL, INC. OR ITS AFFILIATED COMPANIES AND SHALL BE USED ONLY FOR THE PURPOSE FOR WHICH IT WAS SUPPLIED. IT SHALL NOT BE COPIED, REPRODUCED OR OTHERWISE USED, NOR SHALL SUCH INFORMATION BE FURNISHED IN WHOLE OR IN PART TO OTHERS EXCEPT IN ACCORDANCE WITH THE TERMS OF ANY AGREEMENT UNDER WHICH IT WAS SUPPLIED OR WITH THE PRIOR WRITTEN CONSENT OF PROCESS SYSTEMS INTERNATIONAL, INC. AND SHALL BE RETURNED UPON REQUEST.

DWG. NO.	DESCRIPTION	DWG. NO.	DESCRIPTION

UNLESS OTHERWISE SPECIFIED
DIMENSIONS ARE IN INCHES.
TOLERANCES:
FRACTIONAL ±
ANGULAR/MACH ±0°-30' BEND ±2°
TWO PLACE DECIMAL ±.01
THREE PLACE DECIMAL ±.005
FINISHED SURFACE RMS
BREAK CORNERS IN OUT
REMOVE ALL BURRS

DO NOT SCALE THIS DRAWING	REV	DESCRIPTION	CHKD	DRWN	DATE	DEQ#
0		ISSUE FOR FDR			04.26.96	0129

PROCESS SYSTEMS INTERNATIONAL INC.
20 WALKUP DR. WESTBOROUGH, MASSACHUSETTS 01581 USA

ELECTRICAL CONDUIT STUB-UP PLAN
LIGO VACUUM EQUIPMENT
WASHINGTON SITE
LEFT END STATION

CAB FILE V0493405	SIZE D	DWG. NO. V049-3-405	REV. 0
SCALE 3/16" = 1' - 0"	SHEET	1 OF 1	