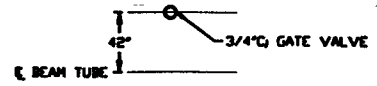
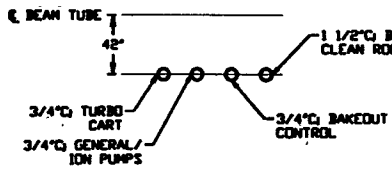


- NOTES**
- 1) PROVIDE FULLY SCHEDULED CONDUIT
  - 2) ALL UNDERGROUND INSTALLATION AND DETAILS TO BE BY OTHERS
  - 3) POWER SOURCE SHALL BE AS FOLLOWS:  
 A) BAKEDOUT/CLEAN ROOM/STATION/VAC  
 B) GATE VALVE/STATION/VAC  
 C) GENERAL/ION PUMPS/VAC  
 D) BAKEDOUT/CONTROL ROOM/VAC  
 E) TURBO CART/STATION/VAC
  - 4) FOR EQUIPMENT POWER REQUIREMENTS, REFER TO PSI DOCUMENT V049-3-001
  - 5) FOR GENERAL NOTES & LEGEND SEE PSI DWG. V049-3-001-SHT 2
  - 6) FOR LIST OF CIVIL CONTRACTOR REFERENCE DWGS. WITH CURRENT REVISIONS SEE PSI DWG. V049-3-001-SHT 3

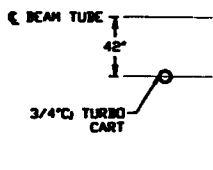
LEFT END STATION PLAN @ EL. 100'-0"



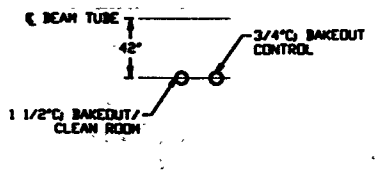
DETAIL 1 REF. THIS SHIT.  
NO SCALE



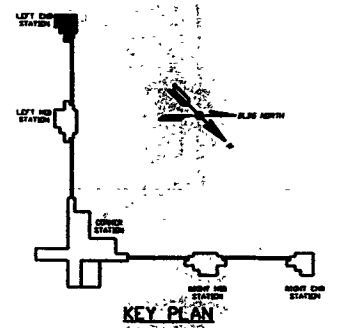
DETAIL 2 REF. THIS SHIT.  
NO SCALE



DETAIL 3 REF. THIS SHIT.  
NO SCALE



DETAIL 4 REF. THIS SHIT.  
NO SCALE



<p><b>PROPRIETARY AND CONFIDENTIAL</b>          THIS DOCUMENT CONTAINS PROPRIETARY INFORMATION BELONGING TO PROCESS SYSTEMS INTERNATIONAL, INC. OR ITS AFFILIATED COMPANIES AND SHOULD BE USED ONLY FOR THE PURPOSE FOR WHICH IT WAS SUPPLIED. IT SHALL NOT BE COPIED, REPRODUCED OR OTHERWISE USED, NOW OR IN THE FUTURE, WITHOUT THE WRITTEN CONSENT OF PROCESS SYSTEMS INTERNATIONAL, INC. ANY SUCH VIOLATION SHALL BE PUNISHED UPON REQUEST.</p>		<p>UNLESS OTHERWISE SPECIFIED DIMENSIONS ARE IN INCHES TOLERANCES:          FINISHES:          HOLE/DRILLING: .01" BORE .02" FINISH          TURNED SURFACE: .001" BORE          BORE: .001" BORE          BORE: .001" BORE</p>		<p>1 ISSUE FOR INSTALLATION          2 ISSUE FOR FOR</p>		<p>REV 1          DESCRIPTION: ISSUE DESCRIPTION</p>		<p>CHKD: <i>AW</i> DRWN: <i>AW</i> DATE: 10.07.96          FAB. DATE: 04.26.96          DEOB</p>		<p>PROCESS SYSTEMS INTERNATIONAL, INC.          20 WALTON ST., WESTBOROUGH, MASSACHUSETTS 01581 USA  <b>ELECTRICAL CONDUIT STUB-UP PLAN          LIGO VACUUM EQUIPMENT          WASHINGTON SITE          LEFT END STATION</b></p>	
DWG. NO.	DESCRIPTION	DWG. NO.	DESCRIPTION	DWG. NO.	DESCRIPTION	DWG. NO.	DESCRIPTION	DWG. NO.	DESCRIPTION	DWG. NO.	DESCRIPTION