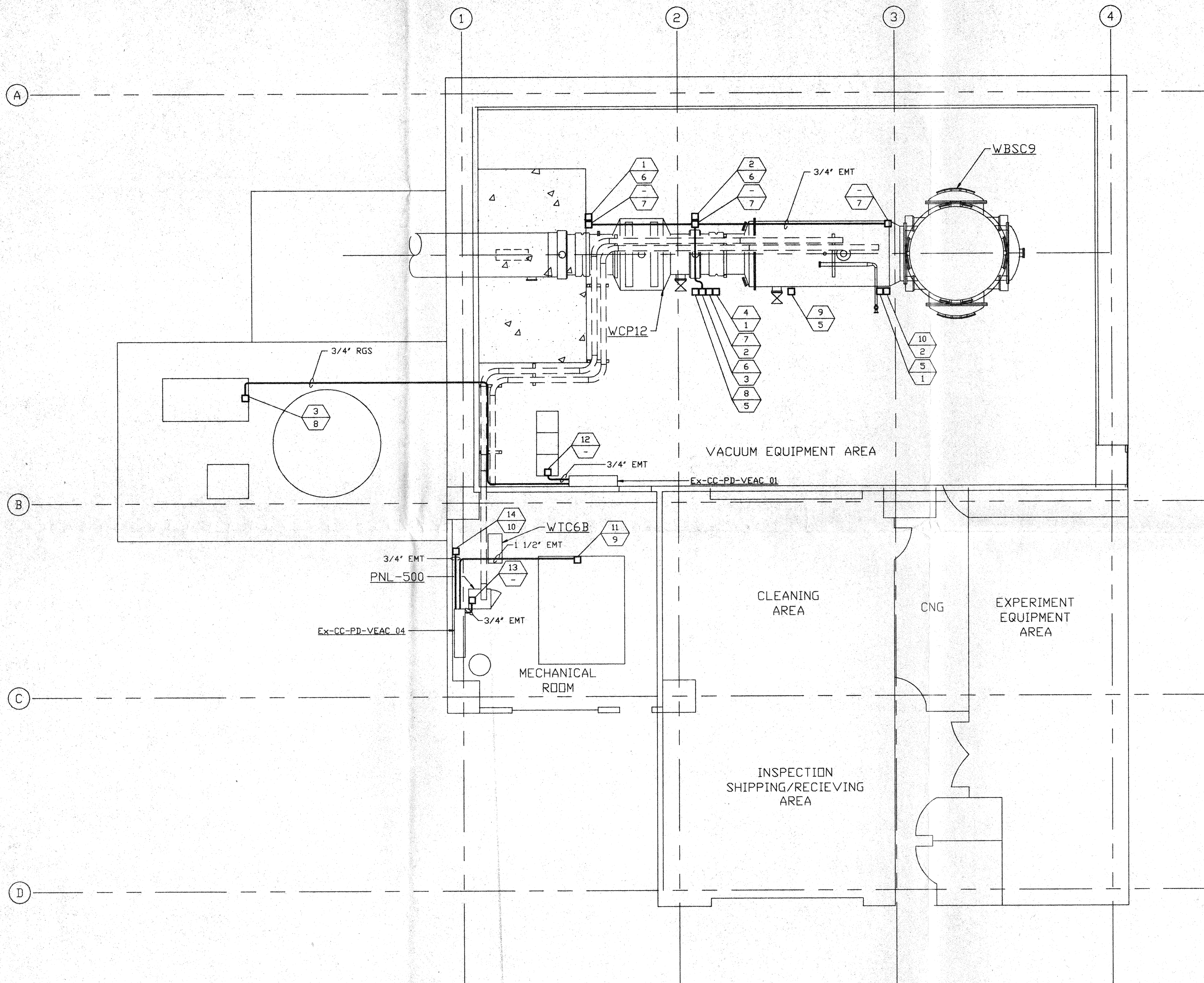


**NOTES**

- 1.) FOR ELECTRICAL INSTALLATION DETAILS SEE PSI DWG. V049-3-006.
- 2.) CONDUIT IS SHOWN DIAGRAMMATICALLY AND SHALL BE FIELD VERIFIED SO AS TO OPTIMIZE SUPPORTING MEANS AND TO AVOID INTERFERENCES WITH PIPING SYSTEMS.
- 3.) ALL RECEPTACLES SHALL BE IDENTIFIED WITH PANEL AND CKT. NUMBER.



DISTRIBUTION SYSTEM FEEDER SCHEDULE					
FEEDER NUMBER	SOURCE (LOAD CENTER LOCATION)	CKT #	EQUIPMENT SERVED	CONDUIT	FILL
1	Ex-CC-PD-VEAC_01	TBD	GATE VALVE WGV19	3/4"	3-#12, #10 GND
2	Ex-CC-PD-VEAC_01	TBD	GATE VALVE WGV20	3/4"	3-#12, #10 GND
3	Ex-CC-PD-VEAC_01	TBD	REGEN HEATER	3/4"	3-#10, #8 GND
4	Ex-CC-PD-VEAC_01	TBD	BAKEOUT/CLEAN ROOM	1 1/2"	4-#6, #8 GND
5	Ex-CC-PD-VEAC_01	TBD	BAKEOUT/CLEAN ROOM	1 1/2"	4-#6, #8 GND
6	Ex-CC-PD-VEAC_01	TBD	GENERAL/ION PUMP/AUX. TURBO	3/4"	2-#12, #12 GND
7	Ex-CC-PD-VEAC_01	TBD	BAKEOUT CONTROL	3/4"	2-#12, #12 GND
8	Ex-CC-PD-VEAC_01	TBD	TURBO PUMP	3/4"	4-#12, #10 GND
9	Ex-CC-PD-VEAC_01	TBD	TURBO PUMP	3/4"	4-#12, #10 GND
10	Ex-CC-PD-VEAC_01	TBD	BAKEOUT CONTROL	3/4"	2-#12, #12 GND
11	Ex-CC-PD-VEAC_01	TBD	AIR COMPRESSOR	1 1/2"	3-#4, #6 GND
12	Ex-CC-PD-VEAC_03	TBD	VE CONTROL TRANSFORMER	3/4"	2-#12, #12 GND
13	Ex-CC-PD-VEAC_04	TBD	2500 L/S ION PUMP	3/4"	2-#12, #12 GND
14	Ex-CC-PD-VEAC_04	TBD	TURBO BACKING PUMP	3/4"	4-#10, #8 GND

NOT FOR  
CONSTRUCTION

**LEGEND**

- ELECTRICAL DEVICE CONNECTION
- ⬡ (XX YY) DEVICE CONNECTION IDENTIFIER
- XX = FEEDER NUMBER; SEE DISTRIBUTION SYSTEM FEEDER SCHEDULE THIS SHIT.
- YY = ELECTRICAL INSTALLATION DETAIL NUMBER; SEE NOTE 1
- CONDUIT; SEE PLAN FOR SIZE

APR 30 1996

D960602-00-V

<p><b>PROPRIETARY AND CONFIDENTIAL</b></p> <p>THIS DOCUMENT CONTAINS PROPRIETARY INFORMATION BELONGING TO PROCESS SYSTEMS INTERNATIONAL, INC. OR ITS AFFILIATED COMPANIES AND SHALL BE USED ONLY FOR THE PURPOSE FOR WHICH IT WAS SUPPLIED. IT SHALL NOT BE COPIED, REPRODUCED OR OTHERWISE USED, NOR SHALL SUCH INFORMATION BE FURNISHED IN WHOLE OR IN PART TO OTHERS EXCEPT IN ACCORDANCE WITH THE TERMS OF ANY AGREEMENT UNDER WHICH IT WAS SUPPLIED OR WITH THE PRIOR WRITTEN CONSENT OF PROCESS SYSTEMS INTERNATIONAL, INC. AND SHALL BE RETURNED UPON REQUEST.</p>		<p>V049-3-006 ELECTRICAL INSTALLATION DETAILS</p> <p>V049-3-005 ION PUMP CONTROLLER CABINET WIRING DIAGRAM</p> <p>V049-3-002 WASHINGTON OVERALL SITE PLAN</p> <p>V049-3-001 GENERAL NOTES &amp; LEGEND</p>	<p>UNLESS OTHERWISE SPECIFIED DIMENSIONS ARE IN INCHES</p> <p>TOLERANCES:</p> <p>FRACTIONAL ±</p> <p>ANGULAR MACH ± 10°-30° BEND ± 2°</p> <p>TWO PLACE DECIMAL ± .01</p> <p>THREE PLACE DECIMAL ± .005</p> <p>FINISHED SURFACE RNS</p> <p>BREAK CORNERS IN OUT.</p> <p>REMOVE ALL BURRS</p>	<p>DO NOT SCALE THIS DRAWING</p> <p>USED ON: 0</p> <p>NEXT ASS'Y:</p>	<p>ISSUE FOR FDR</p> <p>REV: 0</p>	<p>DATE: 04.26.96</p> <p>TIME: 0129</p>	<p>SCALE: 3/16" = 1' - 0"</p> <p>SHEET: 1 OF 1</p>	<p><b>PROCESS SYSTEMS INTERNATIONAL, INC.</b></p> <p>20 WALKUP DR. WESTBOROUGH, MASSACHUSETTS 01581 USA</p> <p><b>POWER PLAN</b></p> <p><b>LIGO VACUUM EQUIPMENT</b></p> <p><b>WASHINGTON SITE</b></p> <p><b>RIGHT END STATION</b></p> <p>CAD FILE: V0493504</p> <p>SIZE: D</p> <p>DWG. NO: V049-3-504</p> <p>REV: 0</p>
---	--	--	---	---	------------------------------------	---	--	--