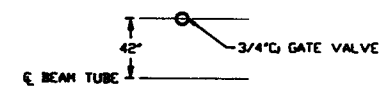
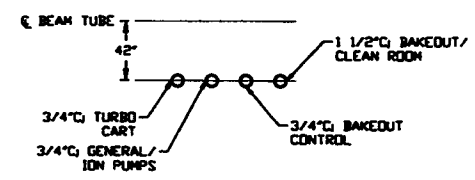


- NOTES:**
- 1) PROVIDE PULL TAPE IN EACH CONDUIT.
 - 2) ALL UNDERGROUND INSTALLATION AND DETAILS ARE BY OTHERS.
 - 3) POWER SOURCE SHALL BE AS FOLLOWS:
 A) BAKEDOUT/CLEAN ROOM 480/277VAC
 B) GATE VALVE 480/277VAC
 C) GENERAL/IDN PUMPS 120VAC
 D) BAKEDOUT CONTROL 120VAC
 E) TURBO CART 208/120VAC
 - 4) FOR EQUIPMENT POWER REQUIREMENTS, REFER TO PSI DOCUMENT #V049-1-047.
 - 5) FOR GENERAL NOTES & LEGEND SEE PSI DVG. #V049-3-001 SHT. 1.
 - 6) FOR LIST OF CIVIL CONTRACTOR REFERENCE DWGS. WITH CURRENT REVISIONS SEE PSI DVG. #V049-3-001 SHT. 2.

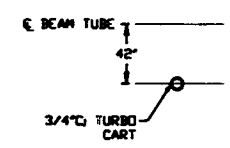
RIGHT END STATION PLAN @ EL. 100'-0"



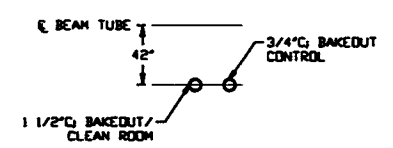
DETAIL 1 REF. THIS SHT.
NO SCALE



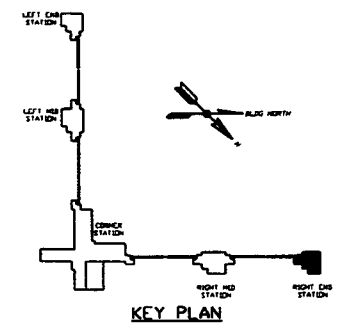
DETAIL 2 REF. THIS SHT.
NO SCALE



DETAIL 3 REF. THIS SHT.
NO SCALE



DETAIL 4 REF. THIS SHT.
NO SCALE



KEY PLAN

PROPRIETARY AND CONFIDENTIAL
 THIS DOCUMENT CONTAINS PROPRIETARY INFORMATION BELONGING TO PROCESS SYSTEMS INTERNATIONAL, INC. OR ITS AFFILIATED COMPANIES AND SHALL BE USED ONLY FOR THE PURPOSE FOR WHICH IT WAS SUPPLIED. IT SHALL NOT BE COPIED, REPRODUCED OR OTHERWISE USED, NOR SHALL SUCH INFORMATION BE FURNISHED IN WHOLE OR IN PART TO OTHERS EXCEPT IN ACCORDANCE WITH THE TERMS OF ANY AGREEMENT UNDER WHICH IT WAS SUPPLIED OR WITH THE PRIOR WRITTEN CONSENT OF PROCESS SYSTEMS INTERNATIONAL, INC. AND SHALL BE RETURNED UPON REQUEST.

DWG. NO.	DESCRIPTION	DWG. NO.	DESCRIPTION

REV	DESCRIPTION	CHKD	DRWN	DATE	ISSUE DESCRIPTION
3	ISSUE FOR CONSTRUCTION	FAB	RJV	05.12.97	0480
2	ISSUE FOR FDR UPDATE & BID	IMCV	RJV	11.23.96	0355
1	ISSUE FOR INSTALLATION	IMCV	RJV	10.07.96	0292
0	ISSUE FOR FDR	IMCV	FAB	04.26.96	0129

PROCESS SYSTEMS INTERNATIONAL, INC.
 20 WALRUP DR. WESTBOROUGH, MASSACHUSETTS 01581 USA

ELECTRICAL CONDUIT STUB-UP PLAN
LIGO VACUUM EQUIPMENT
WASHINGTON SITE
RIGHT END STATION

CAB FILE: V0493505
 SIZE: D
 DWG. NO.: V049-3-505
 REV: 3

SCALE: 3/16" = 1' - 0"
 SHEET: 1 OF 1