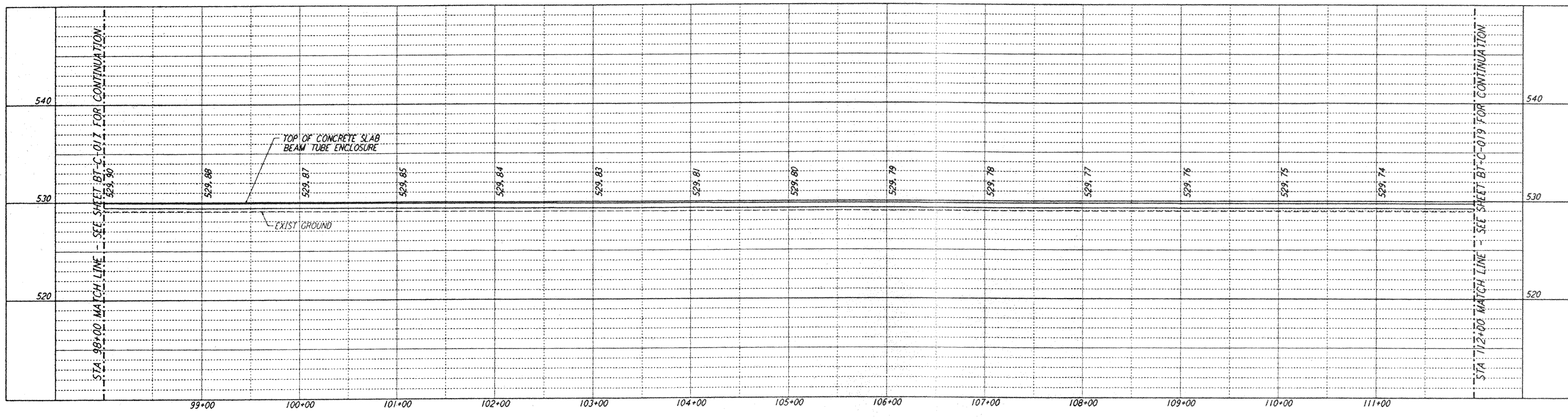
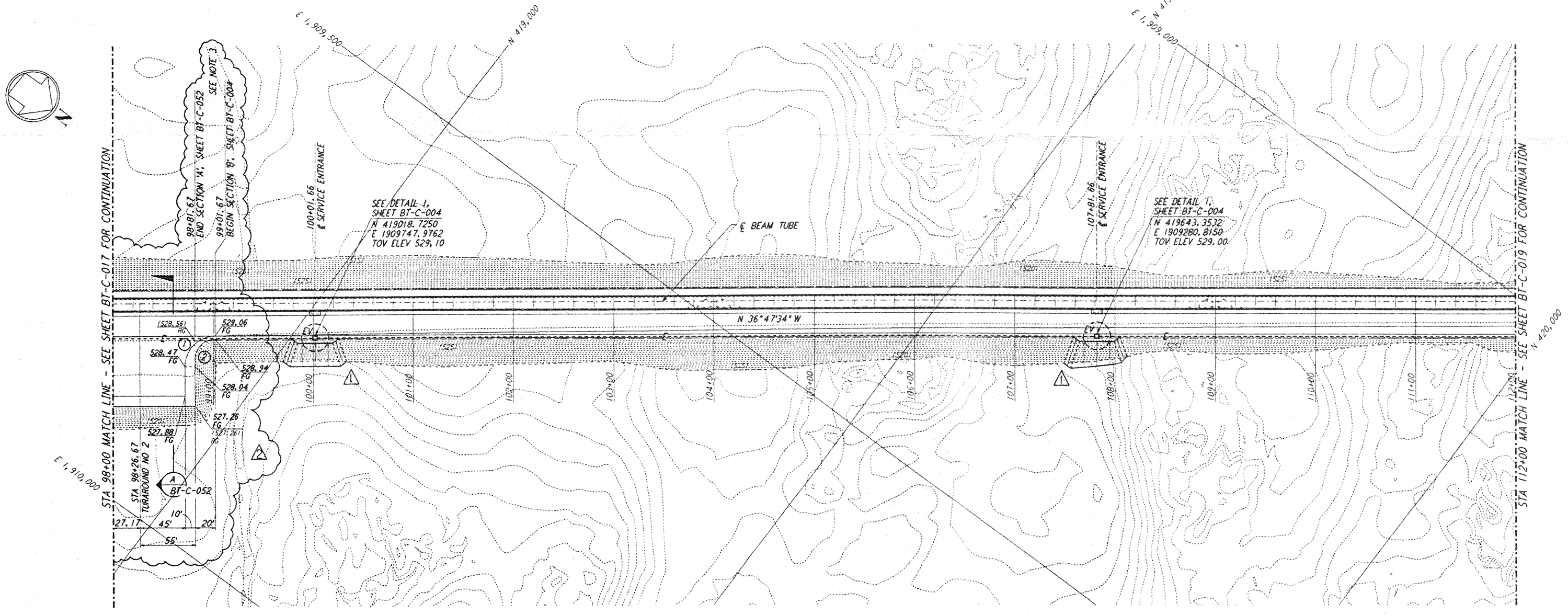


This document and the design it covers are the property of PARSONS. They are loaned only with the borrower's expressed written agreement that they will not be reproduced, copied, loaned, exhibited, or used in any other way, except by written consent from PARSONS to the borrower.



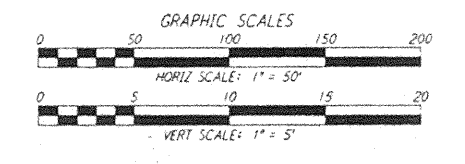
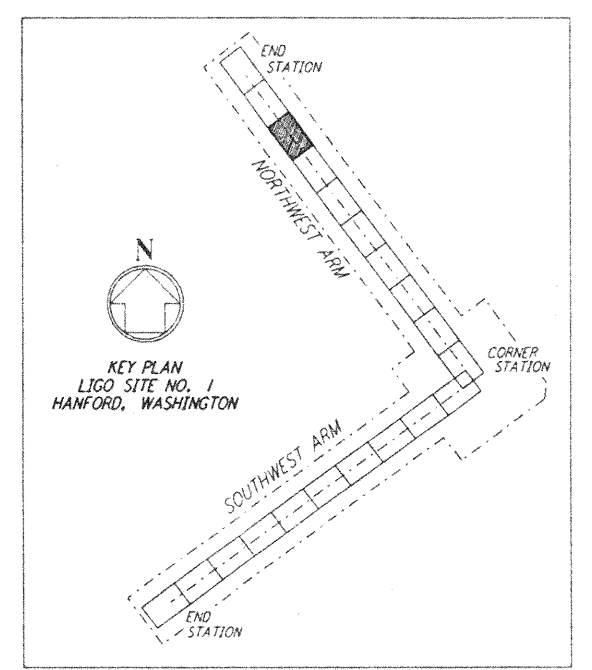
- NOTES:**
- SEE SHEET BT-C-002 FOR GENERAL NOTES, LEGEND AND ABBREVIATIONS.
  - SEE SHEET BT-C-004 FOR TYPICAL SECTIONS AND DETAILS.
  - TRANSITION BETWEEN SECTIONS, AS SHOWN ON PLAN.

**PROFILE**  
 SCALES: HORIZ: 1" = 50'  
 VERT: 1" = 5'



**PLAN**  
 SCALE: 1" = 50'

CURVE DATA				
Δ	RADIUS	LENGTH	TANGENT	
1 90°00'00"	30'	47.12'	30.00'	
2 90°00'00"	20'	31.42'	20.00'	



NO.	DATE	BY	CHKD	ENGR	PROJ	DESCRIPTION
2	4-19-96	WRB	TDM	MDW		CHANGE ORDER NO. 4
1	2-29-96	WRB	TDM	MDW		CHANGE ORDER NO. 2

ISSUED FOR CONSTRUCTION		
DRAWN	WRB	1-19-96
CHECKED	MP	1-19-96
ENGINEER	JB	1-19-96
PROJ	MDW	1-19-96

**PARSONS**  
 100 WEST WALNUT STREET  
 PASADENA, CALIFORNIA

**LIGO**  
 CALIFORNIA INSTITUTE OF TECHNOLOGY  
 MASSACHUSETTS INSTITUTE OF TECHNOLOGY

LASER INTERFEROMETER  
 GRAVITATIONAL-WAVE OBSERVATORY  
 BTE SITWORK & FABRICATION - HANFORD, WA

CIVIL  
 NORTHWEST ARM  
 PLAN AND PROFILE  
 STA 98+00 TO STA 112+00

AS NOTED PP150969 8094  
**BT-C-018**  
 LIGO-D-96-074