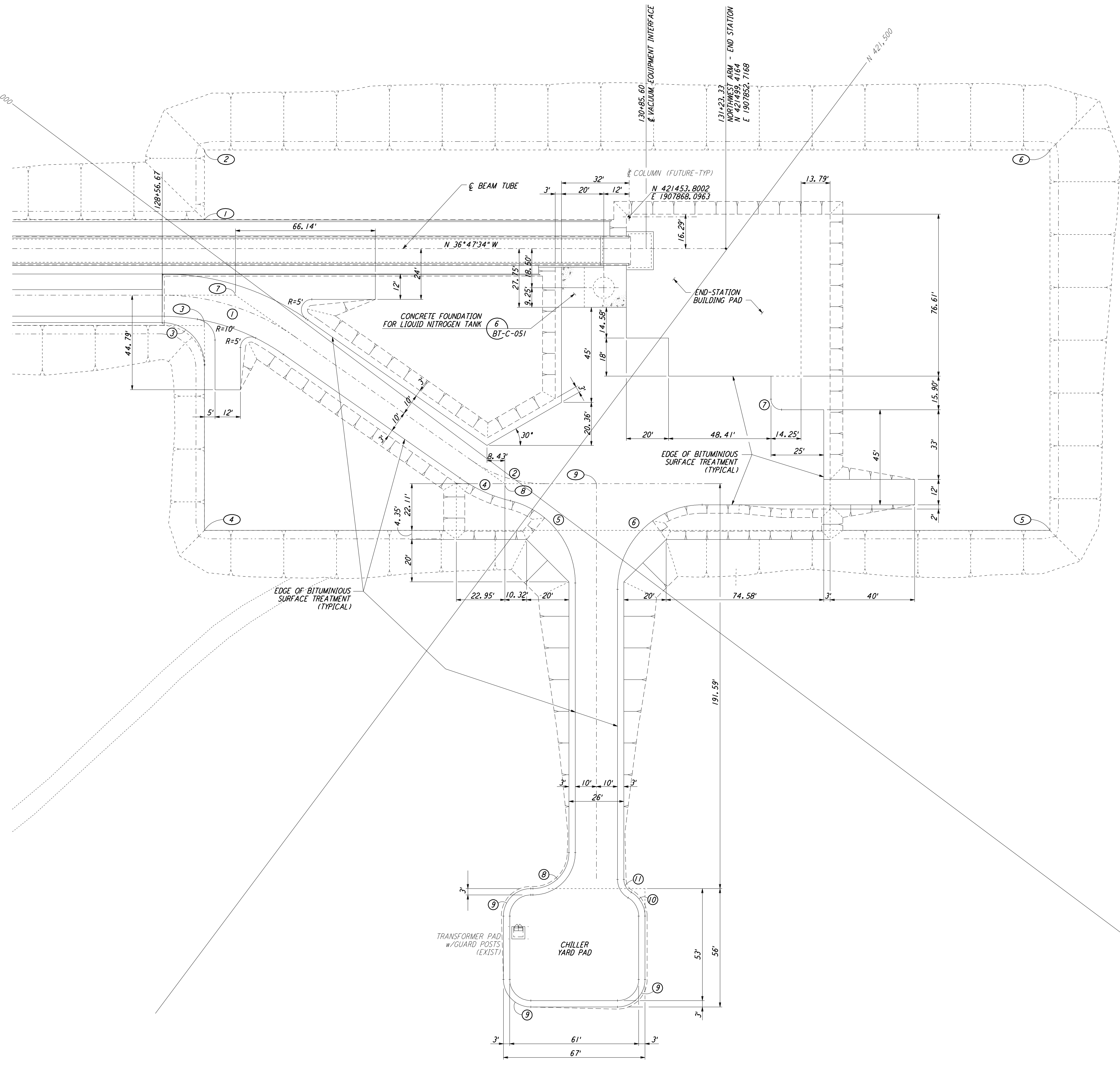
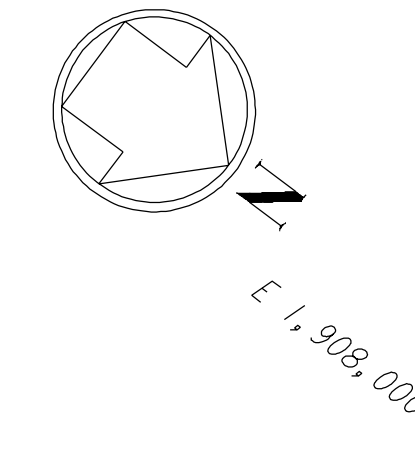
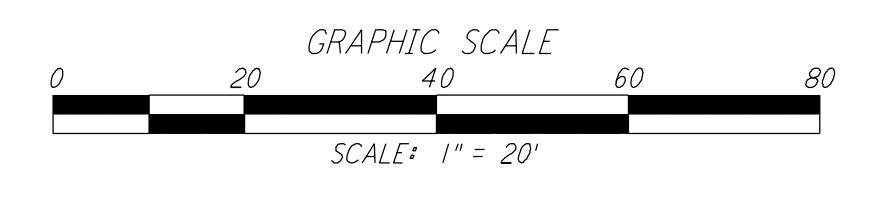
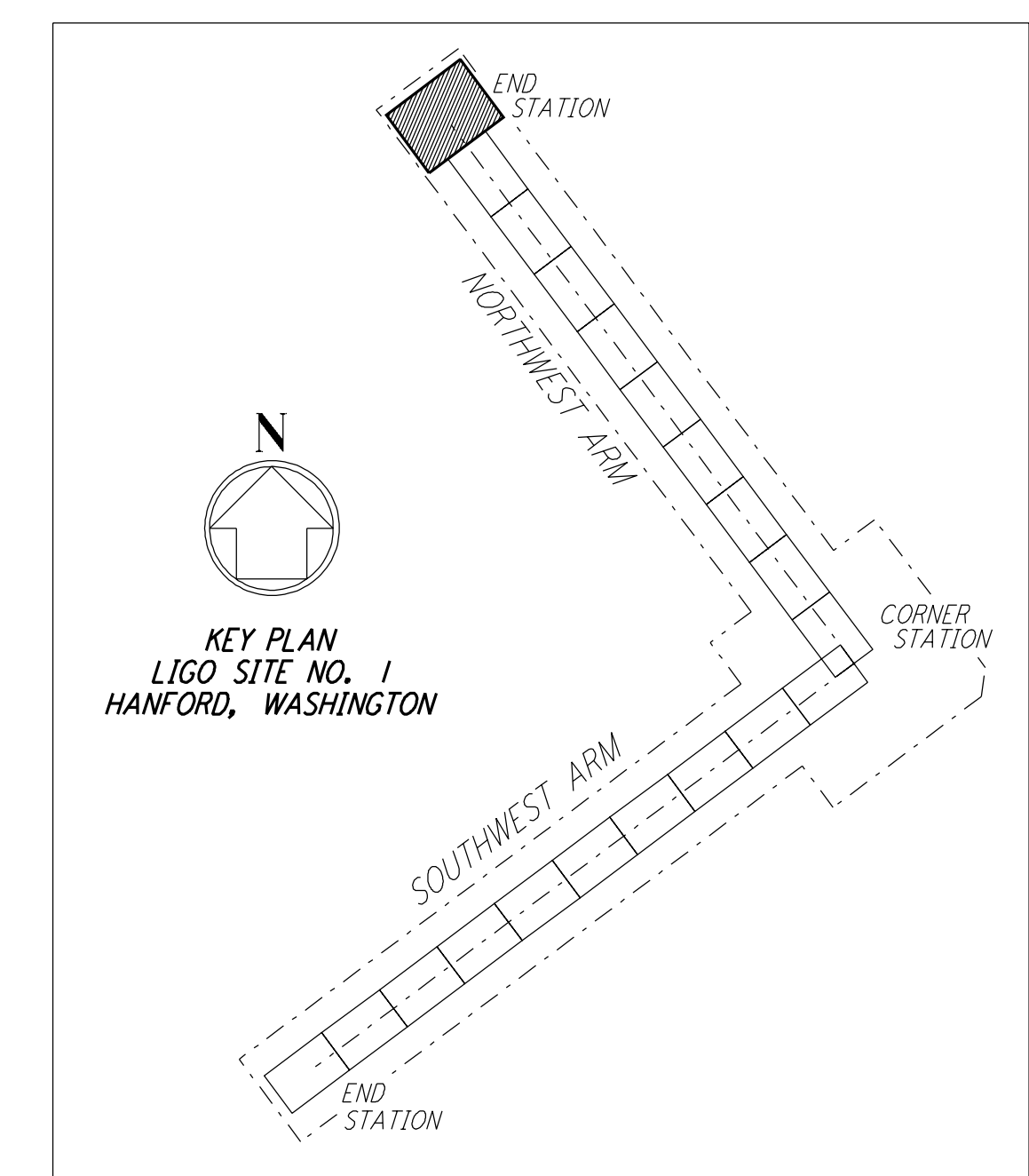


NOTES:
 1. SEE SHEET BT-C-002 FOR GENERAL NOTES, LEGEND AND ABBREVIATIONS.



CURVE DATA					
Δ	RADIUS	LENGTH	TANGENT	REMARK	
1	35°00'00"	110'	67.19'	34.68'	℄ ROAD
2	35°00'00"	60'	36.65'	18.92'	℄ ROAD
3	90°00'00"	20'	31.42'	20.00'	EDGE OF PAD (EXIST)
4	21°32'41"	70'	26.32'	13.32'	
5	76°32'48"	40'	53.44'	31.56'	
6	90°00'00"	40'	62.83'	40.00'	
7	90°00'00"	5'	7.85'	5.00'	
8	90°00'00"	17'	26.70'	17.00'	
9	90°00'00"	13'	20.42'	13.00'	
10	60°00'00"	13'	13.61'	7.51'	
11	60°00'00"	7'	7.33'	4.04'	

COORDINATES			REMARK
Δ	NORTH	EAST	
1	421293.7018	1907989.5052	PI EDGE OF PAD (EXIST)
2	421273.9370	1907963.0780	PI EDGE OF PAD (EXIST)
3	421323.6476	1908029.5453	PI EDGE OF PAD (EXIST)
4	421381.7426	1908107.2235	PI EDGE OF PAD (EXIST)
5	421702.0661	1907867.6549	PI EDGE OF PAD (EXIST)
6	421594.2603	1907723.5094	PI EDGE OF PAD (EXIST)
7	421326.8209	1908009.2730	PI ℄ ROAD
8	421482.2935	1908004.4068	PI ℄ ROAD
9	421516.9860	1907978.4605	℄ ROAD INTERSECTION



LIGO-D960719-A-O

This document and the design it covers are the property of PARSONS. They are loaned only with the borrower's expressed written agreement that they will not be reproduced, copied, loaned, exhibited, or used in any other way, except by written consent from PARSONS to the borrower.

NO.	DATE	BY	CHKD	ENGR	PROJ	DESCRIPTION
A	4-19-96	WRB				CHANGE ORDER NO. 4

DRAWN	WRB
CHECKED	
ENGINEER	
PROJ	

100 WEST WALNUT STREET
PASADENA, CALIFORNIA

CALIFORNIA INSTITUTE OF TECHNOLOGY
MASSACHUSETTS INSTITUTE OF TECHNOLOGY

LASER INTERFEROMETER
GRAVITATIONAL-WAVE OBSERVATORY
BTE SITESWORK & FABRICATION - HANFORD, WA

CIVIL
NORTHWEST ARM
END-STATION
PLOT PLAN

SCALE: 1" = 20'

PP150969 8094

BT-C-025