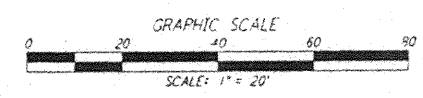
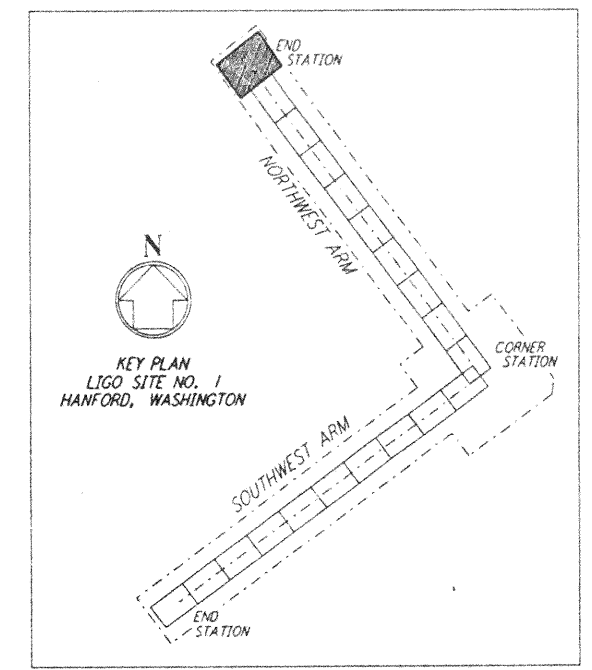
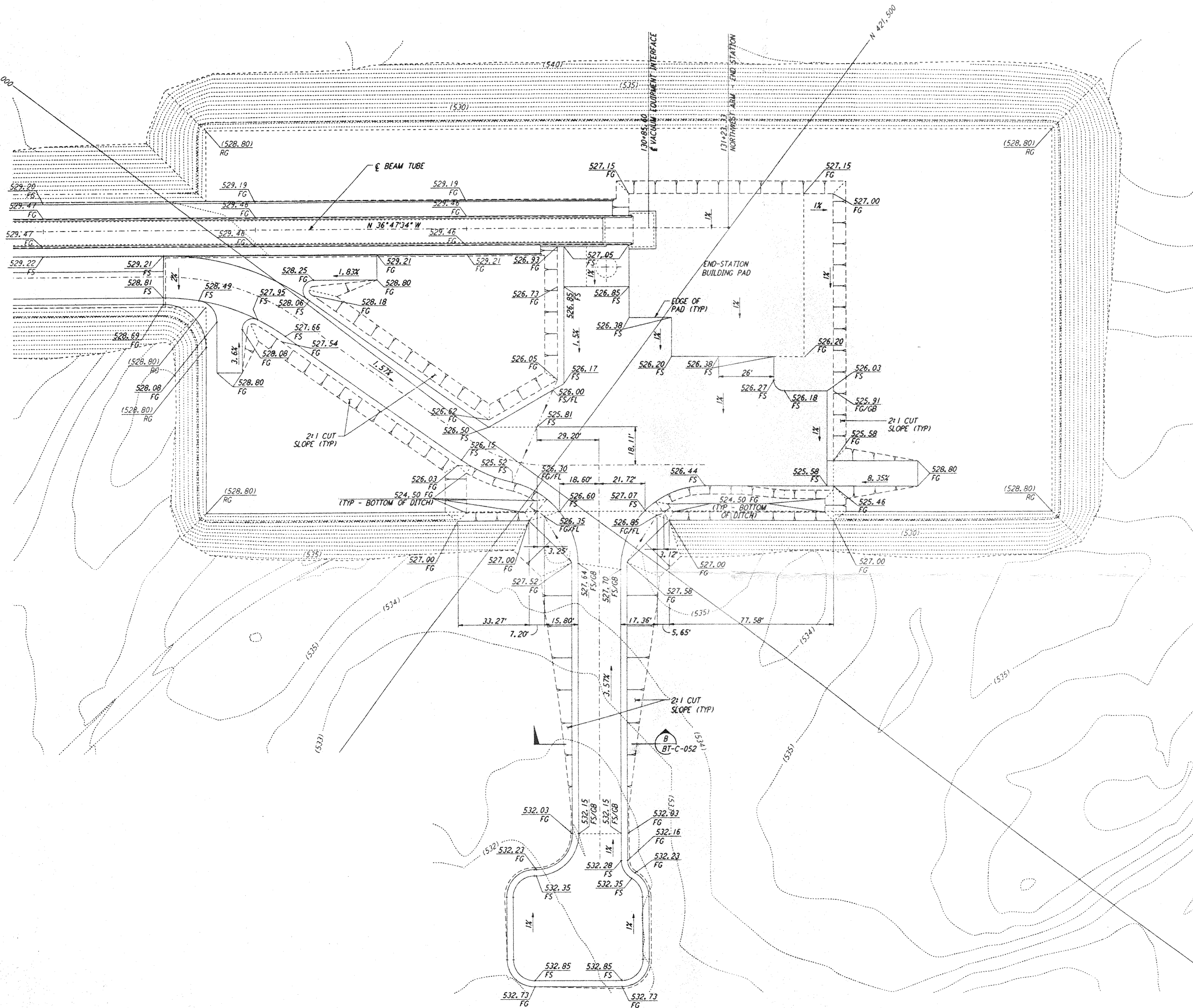
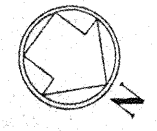


not be reproduced, copied, loaned, exhibited, or used in any other way, except by written consent from PARSONS to the borrower.


This document and the design it covers are the property of PARSONS. They are loaned only with the borrower's expressed written agreement that they will


**NOTES:**  
 1. SEE SHEET BT-C-002 FOR GENERAL NOTES, LEGEND AND ABBREVIATIONS.



NO.	DATE	BY	CHKD	ENGR	PROJ	DESCRIPTION
A	4-19-96	WRB	TJM			CHANGE ORDER NO. 4

DRAWN	WRB
CHECKED	
ENGINEER	
PROJ	


**PARSONS**  
 100 WEST WALNUT STREET  
 PASADENA, CALIFORNIA


**LIGO**  
 CALIFORNIA INSTITUTE OF TECHNOLOGY  
 MASSACHUSETTS INSTITUTE OF TECHNOLOGY

LASER INTERFEROMETER GRAVITATIONAL-WAVE OBSERVATORY BTE SITWORK & FABRICATION - HANFORD, WA			
TITLE	SCALE	CONTRACT NUMBER	PROJECT NUMBER
CIVIL NORTHWEST ARM END-STATION GRADING PLAN	1" = 20'	PP150969	8094
SHEET NUMBER		REVISIONS	
BT-C-026		LIGO-D960720-21	

5

4

3

2

LIGOBTF3.00R