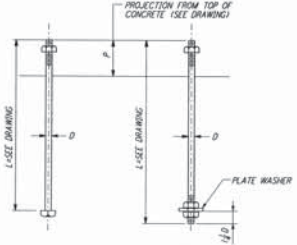


**NOTES:**

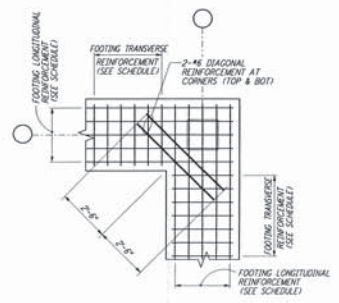
- BOLT MATERIAL SHALL BE IN ACCORDANCE WITH ASTM A307, UNLESS OTHERWISE SPECIFIED.
- USE UNFED MATERIAL, COARSE THREAD, CLASS 2 FTT.
- USE HEAVY DOUBLE CHAMFER HEX NUTS UP TO 1", AND HEAVY FLAT FACE HEX NUTS LARGER THAN 1".
- PROVIDE 1 HEX NUT FOR EACH BOLT, UNLESS OTHERWISE NOTED ON DESIGN DRAWINGS.
- PLATE WASHER MATERIAL SHALL BE ASTM A36, UNLESS OTHERWISE NOTED.
- FABRICATOR SHALL BUNDLE AND TAG BOLTS BY INDIVIDUAL FOUNDATIONS OR MEMBERS. TAGS SHALL BE WEATHER RESISTANT, WITH MARKS AT LEAST 1/2" HIGH, AND FIRMLY WIRED TO BUNDLES.
- SLEEVES SHALL NOT BE USED UNLESS SPECIFIED ON THE DESIGN DRAWINGS.

**ANCHOR BOLT SCHEDULE**

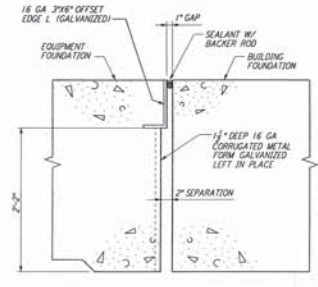
DIA D	PLATE WASHER	SLEEVE IF USED		THREAD LENGTH	DIA D
		DIA	LENGTH		
1/2"		2"	5"	1 1/2"	1/2"
3/4"		2"	5"	2 1/2"	3/4"
1"		2"	7"	2 1/2"	1"
1 1/4"		2"	7"	2 1/2"	1 1/4"
1"	2 1/2" x 2 1/2" x 1/2"	3"	10"	2 1/2"	1"
1 1/4"	3" x 3" x 1/2"	3"	10"	2 1/2"	1 1/4"
1 1/2"	2 1/2" x 2 1/2" x 1/2"	3"	10"	4"	1 1/2"
1 1/2"	2 1/2" x 2 1/2" x 1/2"	4"	15"	4 1/2"	1 1/2"
1 1/2"	2 1/2" x 2 1/2" x 1/2"	4"	15"	4 1/2"	1 1/2"



**TYPE 1**  
**TYPE 2**  
**ANCHOR BOLTS DETAILS**

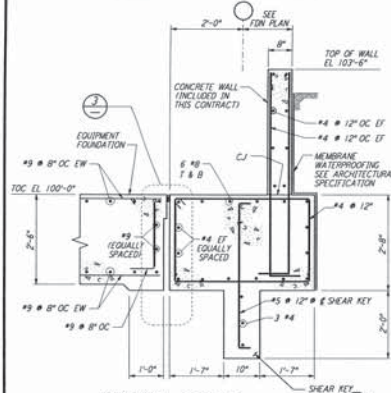


**FOOTING DIAGONAL REINFORCEMENT AT CORNERS**  
**DETAIL**

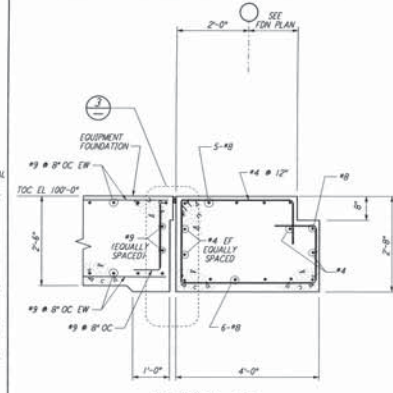


**EQUIPT FDN & BLDG FDN INTERFACE**  
**DETAIL**

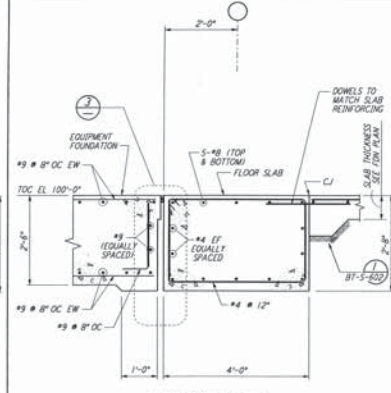
This document and the design it carries are the property of PARSONS. They are issued only with the borrower's expressed written agreement that they will not be reproduced, copied, loaned, exhibited, or used in any other manner without the written consent from PARSONS to the borrower.



**SECTION A-A**



**SECTION B-B**



**SECTION C-C**

**NOTES:**  
 1. FOR GENERAL NOTES, ABBREVIATIONS AND SYMBOLS, SEE DRAWING BT-S-601.

**LIGO-D960737-00-O**

NO.	DATE	BY	CHKD	ENGR	PROJ	DESCRIPTION
D	1-20-99	MFL			MDW	ISSUED FOR AS BUILT
A	4-19-98	MCS	KS	BP		CHANGE ORDER #4

**AS-BUILT DRAWINGS**

**PARSONS**  
 100 WEST WALNUT STREET  
 PASADENA, CALIFORNIA

**LIGO**  
 CALIFORNIA INSTITUTE OF TECHNOLOGY  
 MASSACHUSETTS INSTITUTE OF TECHNOLOGY

LASER INTERFEROMETER  
 GRAVITATIONAL-WAVE OBSERVATORY  
**BTE SITWORK & FABRICATION - HANFORD, WA**

STRUCTURAL STANDARD  
**CONCRETE DETAILS SHEET 2**

NONE PP150969 8094  
**BT-S-603**