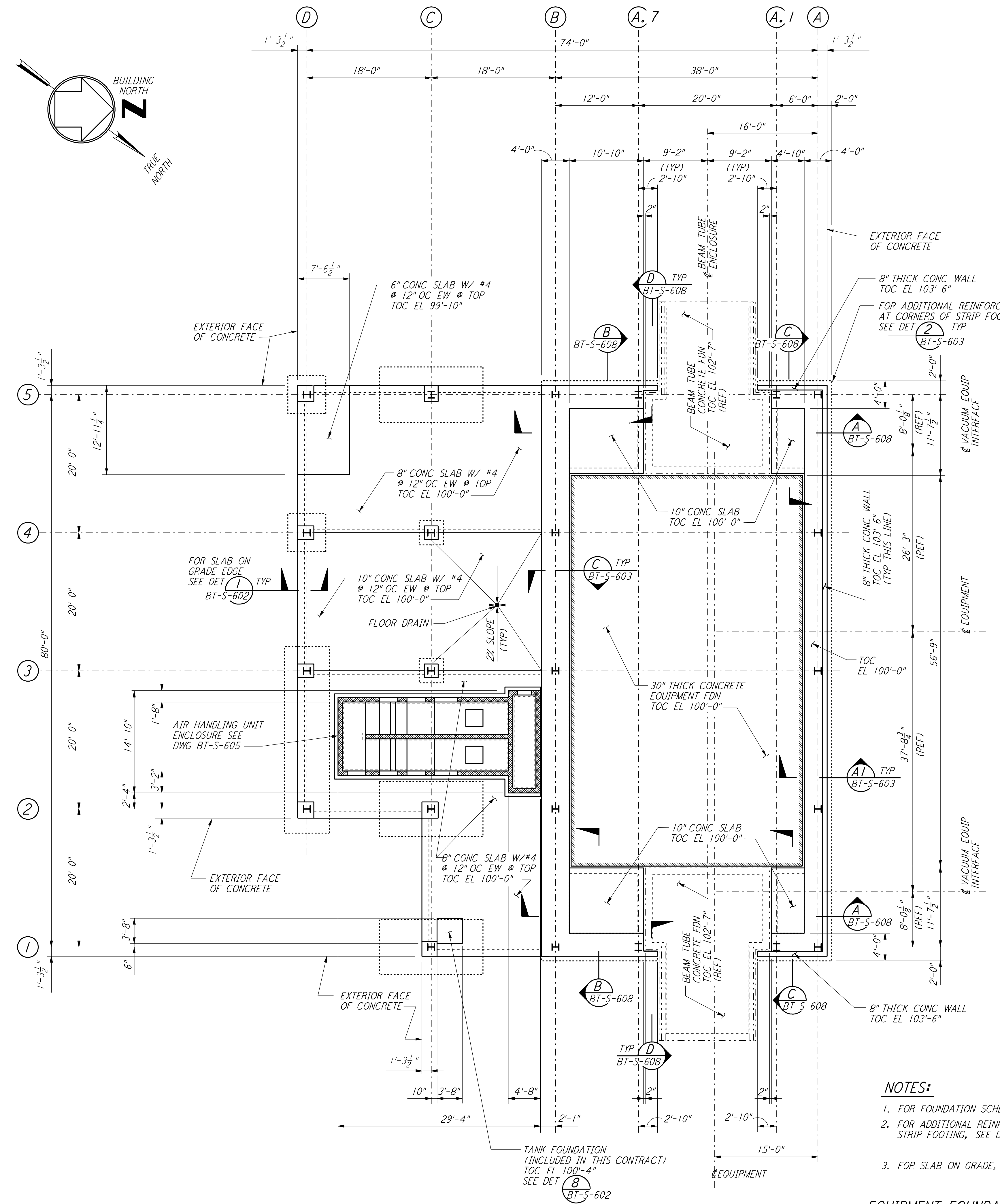


This document and the design it covers are the property of PARSONS. They are loaned only with the borrower's expressed written agreement that they will not be reproduced, copied, loaned, exhibited, or used in any other way, except by written consent from PARSONS to the borrower.



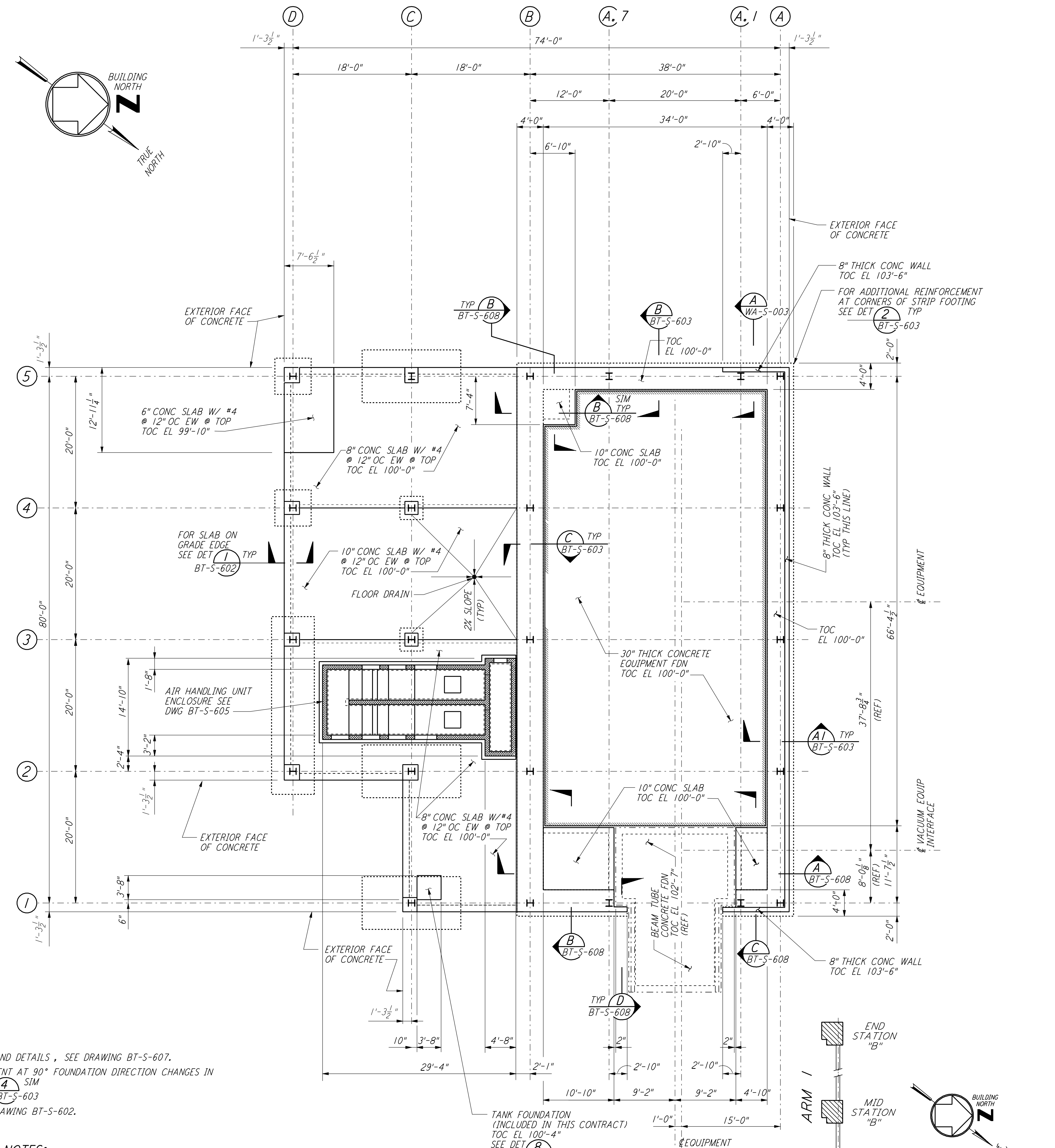
ARM I (SOUTHWEST ARM)
 MID STATION "B" FOUNDATION PLAN
 $\frac{1}{8}'' = 1'-0''$
 DATUM POINT EL 100'-0" = EL 532.22'

NOTES:

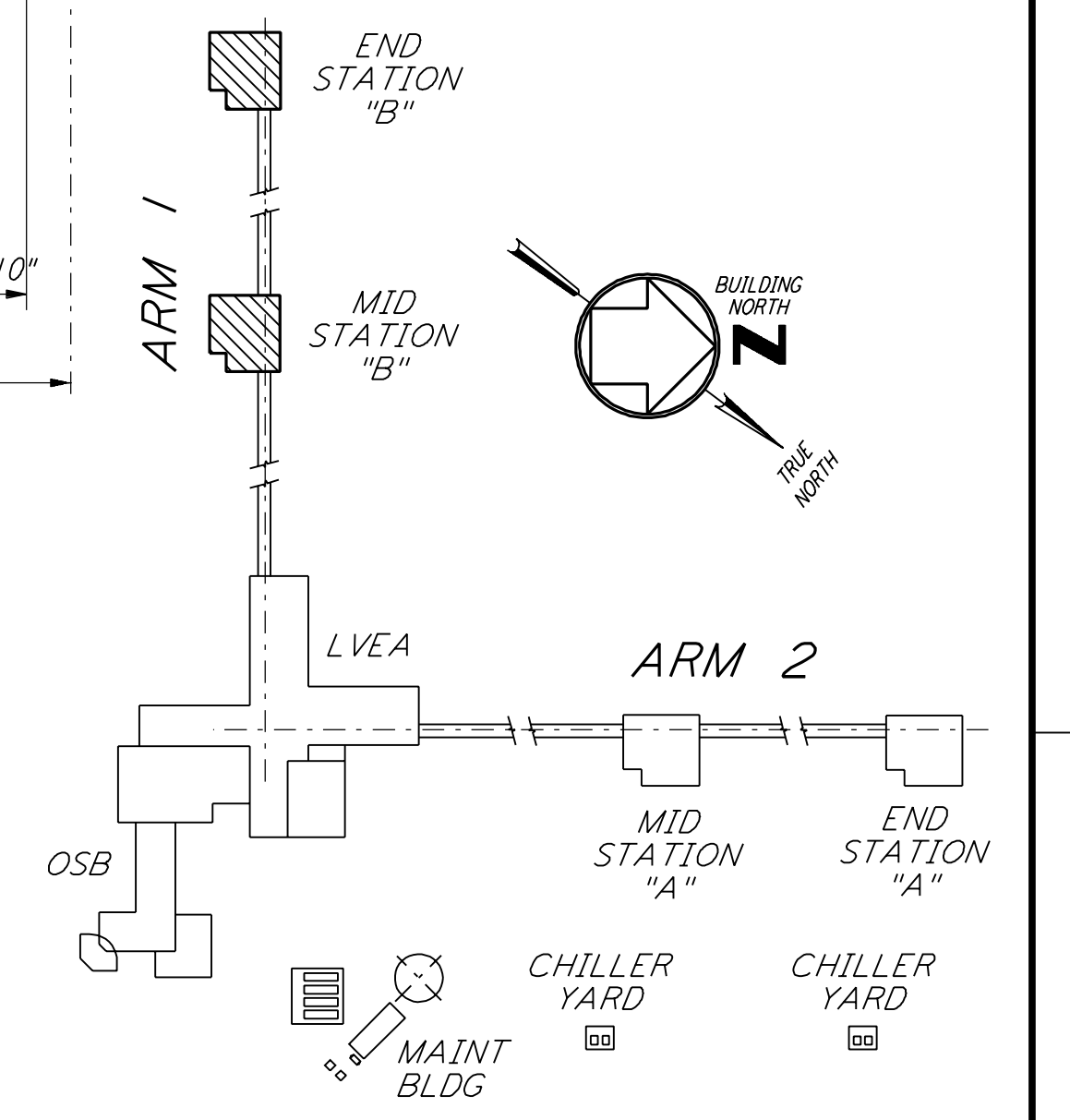
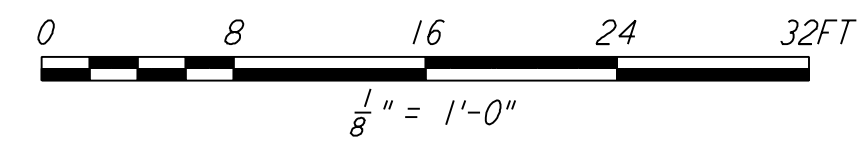
1. FOR FOUNDATION SCHEDULE AND DETAILS, SEE DRAWING BT-S-607.
2. FOR ADDITIONAL REINFORCEMENT AT 90° FOUNDATION DIRECTION CHANGES IN STRIP FOOTING, SEE DETAIL (4) TYP BT-S-603.
3. FOR SLAB ON GRADE, SEE DRAWING BT-S-602.

EQUIPMENT FOUNDATION NOTES:

1. CONCRETE FOR EQUIPMENT FOUNDATION SHALL BE PLACED IN MULTIPLE LIFTS OF ONE (1) FOOT OR MORE WITH A FINAL LIFT OF SIX (6) INCHES.
2. FIBERMESH FIBERS (MANUFACTURED BY FIBERMESH, CHATTANOOGA, TENNESSEE OR EQUAL) SHALL BE MIXED WITH CONCRETE FOR THE FINAL LIFT OF SIX (6) INCHES FOR THE EQUIPMENT FOUNDATION.
3. CONCRETE SURFACE SHALL BE CLEANED, RAKED AND ROUGHENED TO DEVELOP BOND BETWEEN CONCRETE LAYERS.
4. TOP REINFORCEMENT OF EQUIPMENT FOUNDATION SHALL HAVE $\frac{1}{2}''$ CLEAR COVER. CONTRACTOR SHALL TAKE ALL THE NECESSARY PRECAUTIONS TO MAINTAIN UNIFORM COVER.
5. CONTRACTOR SHALL HAVE SPARE PUMPS TO ENSURE UNINTERRUPTED PLACEMENT OF CONCRETE.
6. EQUIPMENT FOUNDATION SHALL BE CURED BY MEMBRANE CURING METHOD AS PER SPECIFICATIONS.



ARM I (SOUTHWEST ARM)
 END STATION "B" FOUNDATION PLAN
 $\frac{1}{8}'' = 1'-0''$
 DATUM POINT EL 100'-0" = EL 535.26'



LIGO-D960738-A-O KEY PLAN

REFERENCES				REVISIONS				DRAWN		CHECKED		ENGINEER		PROJ	
NO.	DATE	BY	CHKD	ENGR	PROJ	NO.	DESCRIPTION	NO.	DESCRIPTION	NO.	DESCRIPTION	NO.	DESCRIPTION	NO.	DESCRIPTION

PARSONS

100 WEST WALNUT STREET
 PASADENA, CALIFORNIA

LIGO

CALIFORNIA INSTITUTE OF TECHNOLOGY
 MASSACHUSETTS INSTITUTE OF TECHNOLOGY

LASER INTERFEROMETER GRAVITATIONAL-WAVE OBSERVATORY			
BTE SITework & FABRICATION - HANFORD, WA			
TITLE	SCALE	CONTRACT NUMBER	PROJECT NUMBER
STRUCTURAL MID STATION "B" & END STATION "B" FOUNDATION PLANS	AS NOTED	PP150969	8094
SHEET NUMBER	REVISED	DATE	BY
BT-S-604			