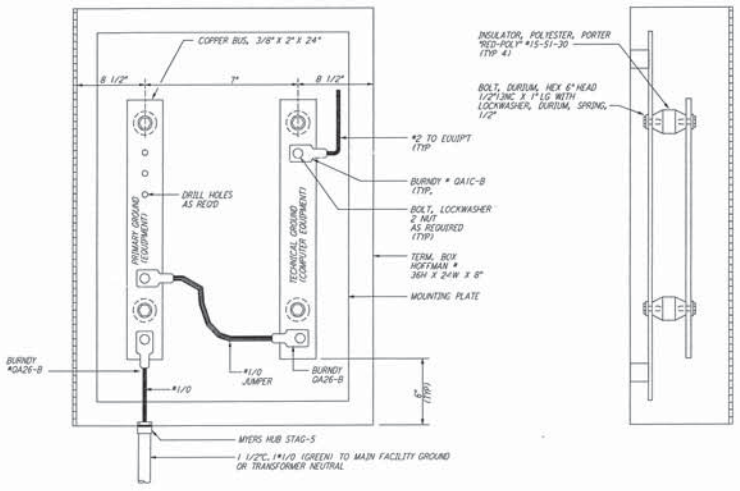


5

4

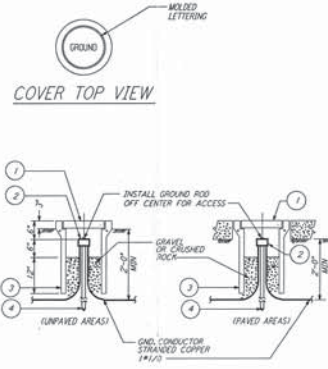
3

2



FRONT VIEW SIDE VIEW

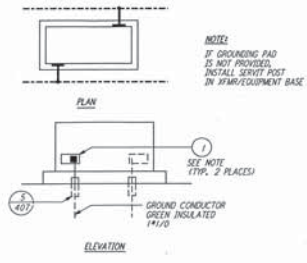
GROUNDING CONNECTION BOX (1) REF.  
 N.T.S.



LIST OF MATERIAL

ITEM NO.	QTY	DESCRIPTION
1	1	BROOKS #9 CONCRETE COVER WITH 11 LBS. WITH 3 GAGE DE-BAR
2	1	CONNECTOR 2 WIRES X 3/4" GROUND ROD BURNED M0K4-2E
3	1	BROOKS #9 BOOT (2\"/>

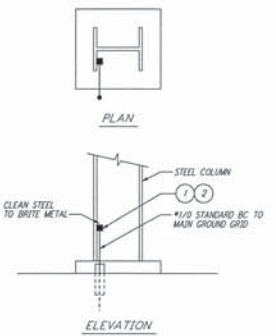
GROUND WELL (2) REF.  
 N.T.S.



LIST OF MATERIAL

ITEM NO.	QTY	DESCRIPTION
1	2	SERVIT. POST TWO #2-#2/0 WIRES SHORT STUD BURNED TYPE #2C-2E

TRANSFORMER/EQUIPMENT GROUNDING (3) REF.  
 N.T.S.

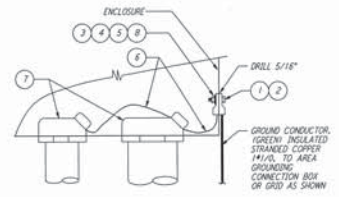


LIST OF MATERIAL

ITEM NO.	QTY	DESCRIPTION
1	1	CADWELD MOLD #M0BC-2C
2	1	CARTRIDGE STANDARD POWDER 200 GRAMS

EXOTHERMIC WELD TO STRUCTURE (4) REF.  
 N.T.S.

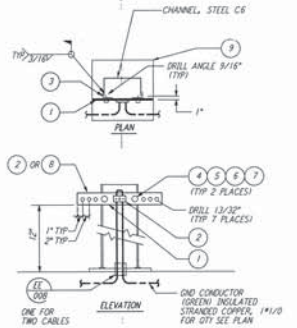
not be reproduced, copied, loaned, exhibited, or used in any other way, except by written consent from PARSONS. They are loaned only with the borrower's expressed written agreement that they will



LIST OF MATERIAL

ITEM NO.	QTY	DESCRIPTION
1	1	LUG #1/2-#2/0 WIRE X 1/4\"/>

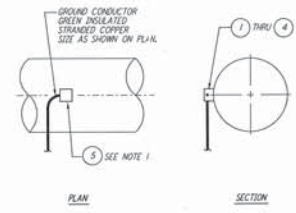
CABINET OR BOX GROUNDING (5) REF.  
 N.T.S.



LIST OF MATERIAL

ITEM NO.	QTY	DESCRIPTION
1	1	COPPER BUS, 1/4\"/>

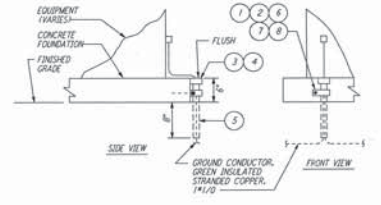
GROUNDING CONNECTION PLATE (6) REF.  
 N.T.S.



LIST OF MATERIAL

ITEM NO.	QTY	DESCRIPTION
1	AR	MOLD M0R2 #2/0-#4 MAX. PIPE, CADWELD MAM-2C-250C
2	1	CARTRIDGE STANDARD POWDER 90 GRAMS
3	AR	MOLD M0R2 #2/0-#10 MAX. PIPE, CADWELD MAM-20-8C
4	1	CARTRIDGE STANDARD POWDER 90 GRAMS
5	1	COLD GALVANIZE-TUBE, #20C OR BUTYMASTIC

GROUNDING CONNECTION TO HORIZONTAL STEEL WATER PIPE (7) REF.  
 N.T.S.



LIST OF MATERIAL

ITEM NO.	QTY	DESCRIPTION
1	1	CLAMP, GALV STEEL 1 1/4\"/>

GROUNDING CABLE PROTECTIVE SLEEVE (8) REF.  
 N.T.S.

REV.	NO.	DATE	BY	CHKD	ENGR	PROJ	DESCRIPTION
A	4-15-98	MAM	SPY				CHANGE ORDER #4

**PARSONS**  
 100 WEST WALNUT STREET  
 PASADENA, CALIFORNIA

**LIGO**  
 CALIFORNIA INSTITUTE OF TECHNOLOGY  
 MASSACHUSETTS INSTITUTE OF TECHNOLOGY

LASER INTERFEROMETER  
 GRAVITATIONAL-WAVE OBSERVATORY  
 BTE SITWORK & FABRICATION - HANFORD, WA

ELECTRICAL GROUNDING DETAILS SHEET 2

NONE PP150969 8094  
**BT-E-604**

5

4

3

2

3133p047a7a4a6e424.dwg