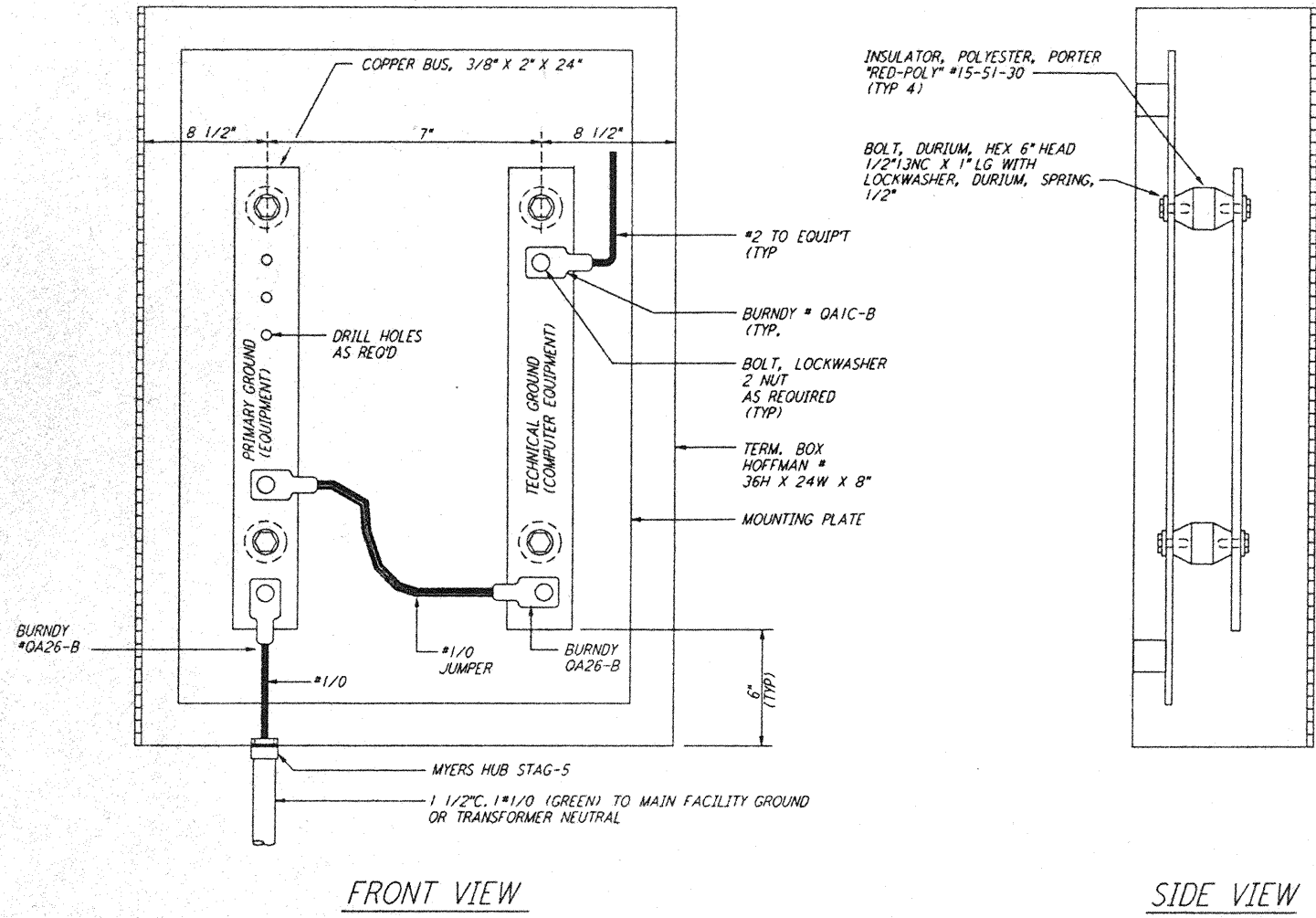
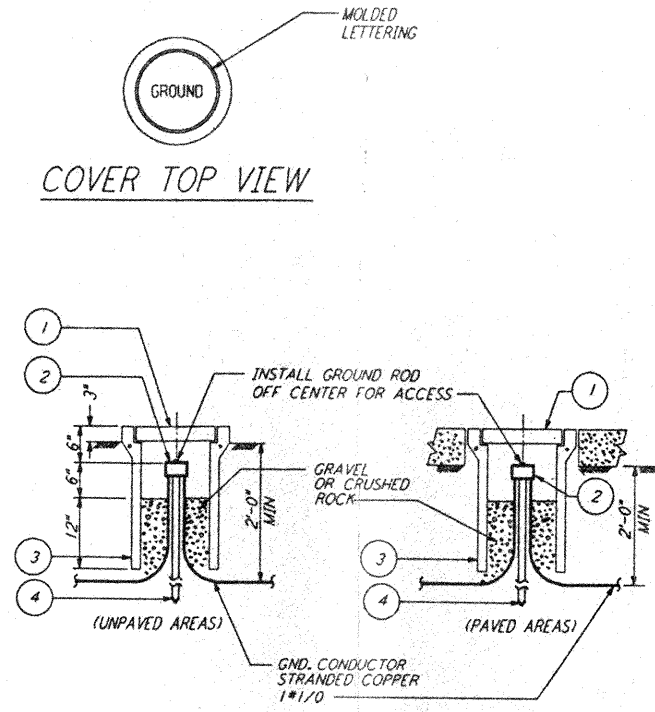


only other way, except by written consent from PARSONS to the borrower.

of PARSONS. They are loaned only with the borrower's expressed written agreement that they will



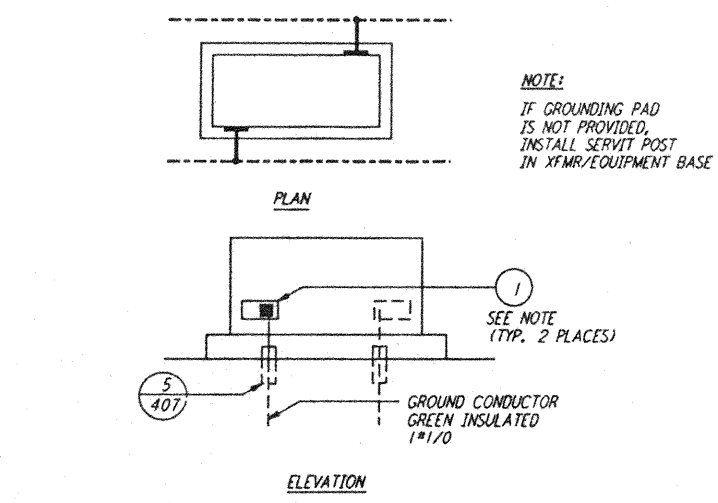
**GROUNDING CONNECTION BOX** (1) REF  
N. T. S.



LIST OF MATERIAL

| ITEM NO. | QTY | DESCRIPTION   |
|----------|-----|---|
| 1        | 1   | BROOKS #9 CONCRETE COVER WT=11 LBS WITH 9 GAGE RE-BAR |
| 2        | 1   | CONNECTOR 3 WIRES X 3/4\"/>                           |

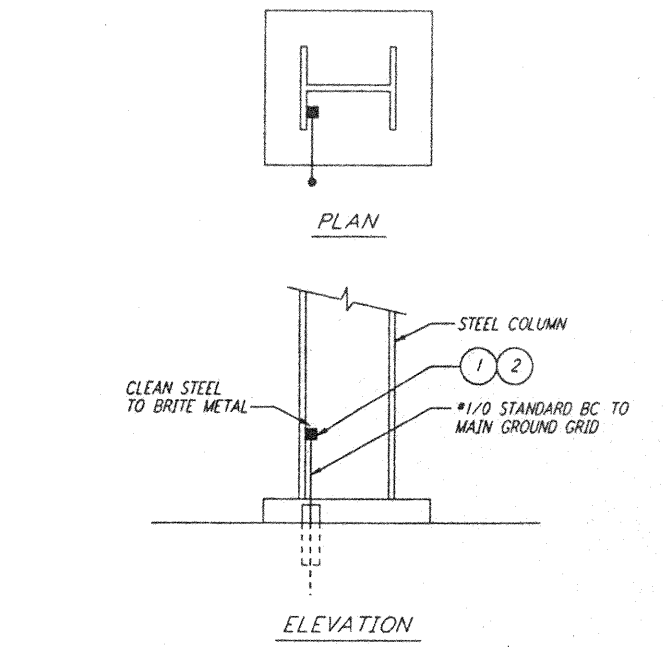
**GROUND WELL** (2) REF  
N. T. S.



LIST OF MATERIAL

| ITEM NO. | QTY | DESCRIPTION                              |
|----------|-----|--|
| 1        | 2   | SERVIT POST TWO #2-#2/0 WIRES SHORT STUD |
|          |     | BURNDY TYPE #2C-26                       |

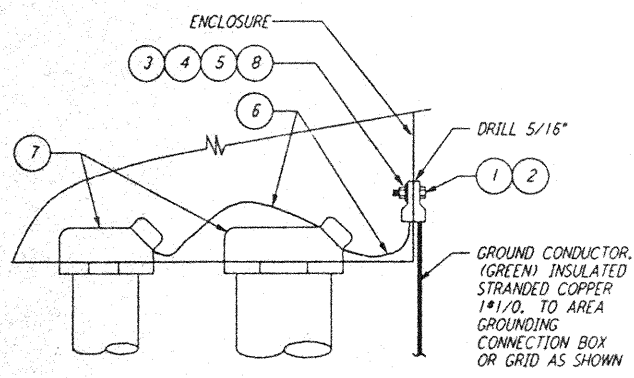
**TRANSFORMER/EQUIPMENT GROUNDING** (3) REF  
N. T. S.



LIST OF MATERIAL

| ITEM NO. | QTY | DESCRIPTION                         |
|----------|-----|-------------------------------------|
| 1        | 1   | CADWELD MOLD #HDVBC-2C              |
| 2        | 1   | CARTRIDGE STANDARD POWDER 200 GRAMS |

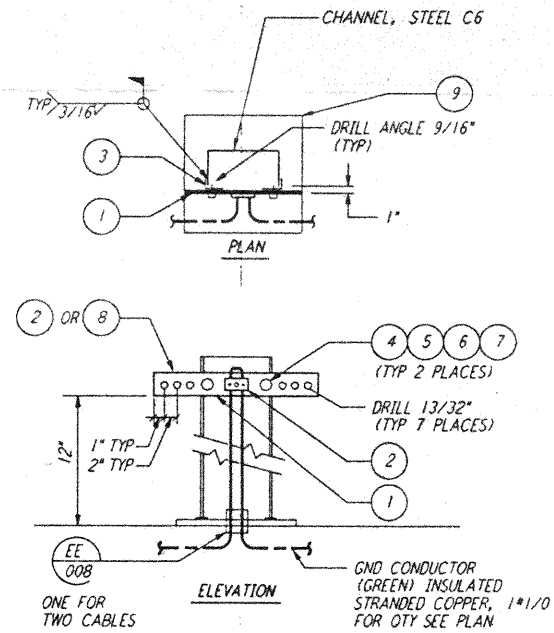
**EXOTHERMIC WELD TO STRUCTURE** (4) REF  
N. T. S.



LIST OF MATERIAL

| ITEM NO. | QTY | DESCRIPTION                   |
|----------|-----|-------------------------------|
| 1        | 1   | LUG, #1/0-#2/0 WIRE X 1/4\"/> |

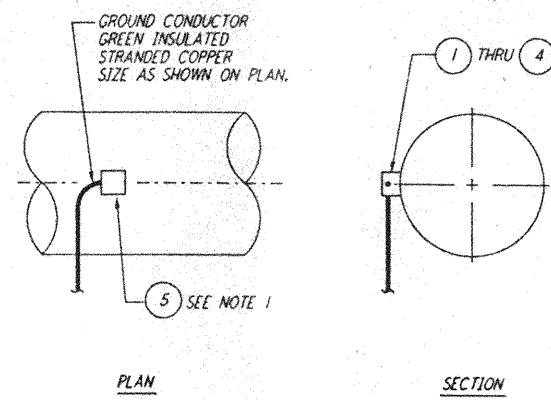
**CABINET OR BOX GROUNDING** (5) REF  
N. T. S.



LIST OF MATERIAL

| ITEM NO. | QTY | DESCRIPTION         |
|----------|-----|---------------------|
| 1        | 1   | COPPER BUS, 1/4\"/> |

**GROUNDING CONNECTION PLATE** (6) REF  
N. T. S.

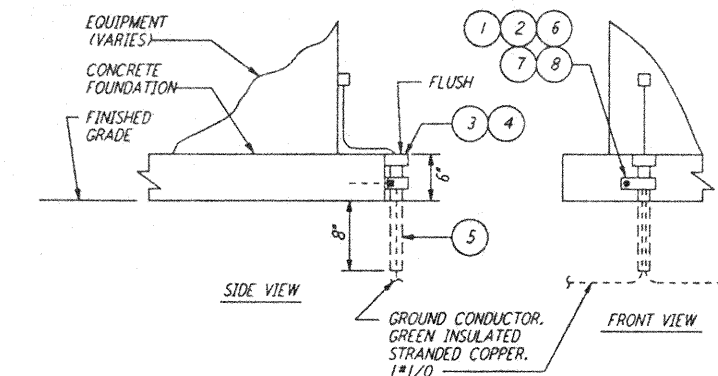


NOTE:  
1. PROTECTIVE COATING ON PIPE SHALL BE RESTORED BY FIELD.

LIST OF MATERIAL

| ITEM NO. | QTY | DESCRIPTION           |
|----------|-----|-----------------------|
| 1        | AR  | MOLD HORIZ #2/0-4\"/> |

**GROUNDING CONNECTION TO HORIZONTAL STEEL WATER PIPE** (7) REF  
N. T. S.



LIST OF MATERIAL

| ITEM NO. | QTY | DESCRIPTION                 |
|----------|-----|-----------------------------|
| 1        | 1   | CLAMP, GALV STEEL 1 1/4\"/> |

**GROUNDING CABLE PROTECTIVE SLEEVE** (8) REF  
N. T. S.

| NO. | DATE    | BY | CHKD | ENGR | PROJ | DESCRIPTION     |
|-----|---------|----|------|------|------|-----------------|
| A   | 4-15-98 | MM |      |      |      | CHANGE ORDER #4 |

|          |       |
|----------|-------|
| DRAWN    | M. M. |
| CHECKED  |       |
| ENGINEER |       |
| PROJ     |       |



100 WEST WALNUT STREET  
PASADENA, CALIFORNIA



CALIFORNIA INSTITUTE OF TECHNOLOGY  
MASSACHUSETTS INSTITUTE OF TECHNOLOGY

LASER INTERFEROMETER  
GRAVITATIONAL-WAVE OBSERVATORY  
BTE SITWORK & FABRICATION - HANFORD, WA

|  |       |                 |                |
|--|-------|-----------------|----------------|
| TITLE                                      | SCALE | CONTRACT NUMBER | PROJECT NUMBER |
| ELECTRICAL<br>GROUNDING DETAILS<br>SHEET 2 | NONE  | PPI50969        | 8094           |
| SHEET NUMBER                               |       | REVISION        |                |
| BT-E-604                                   |       | LIGO-096074-A-D |                |