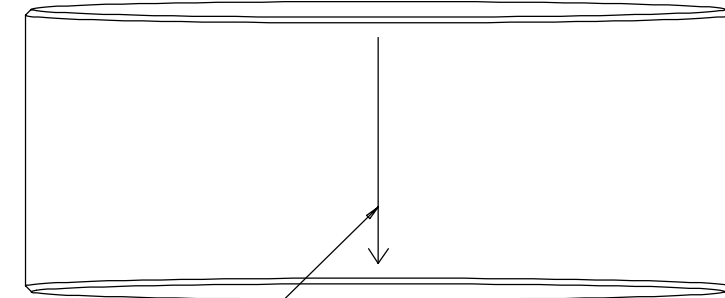
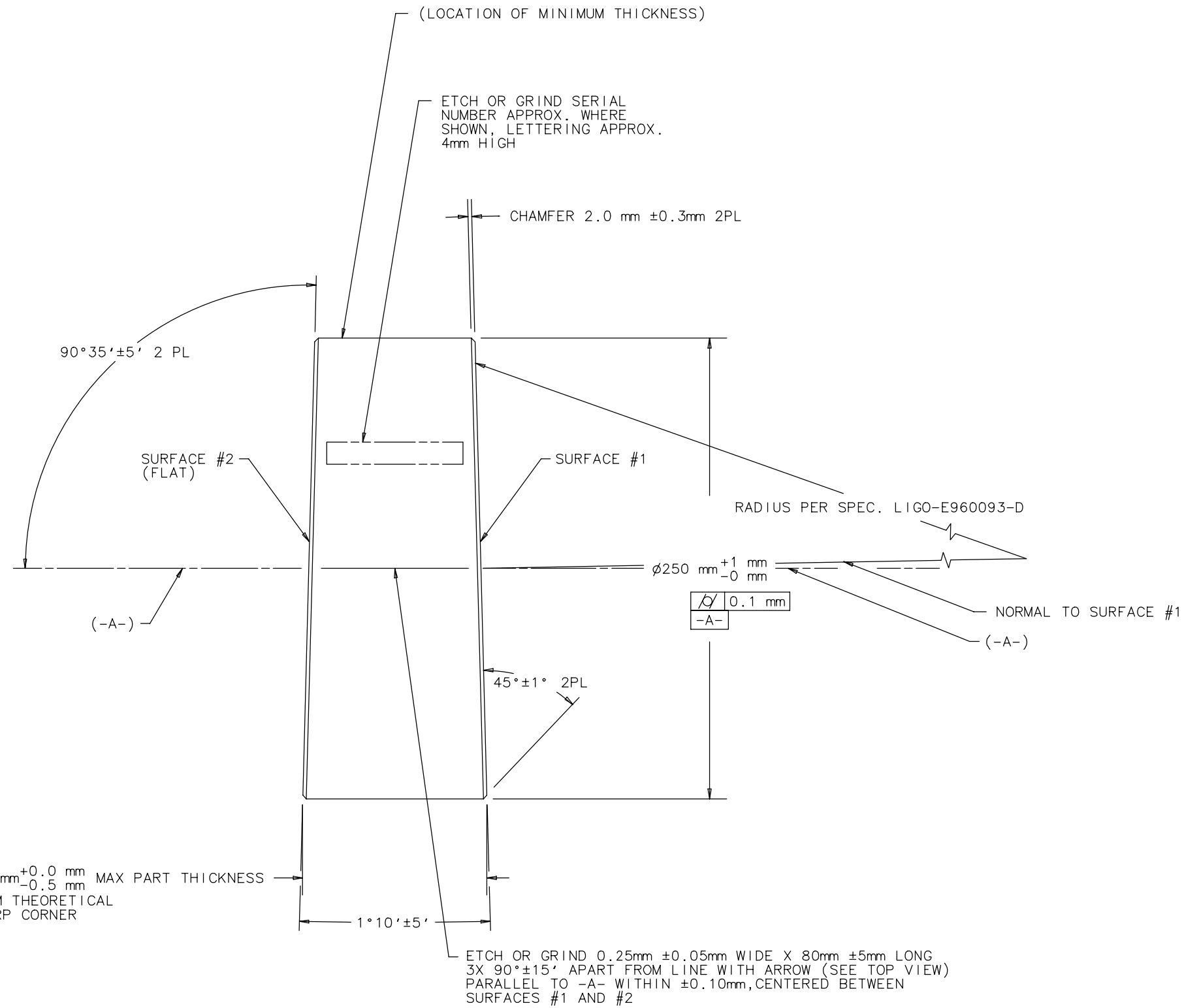


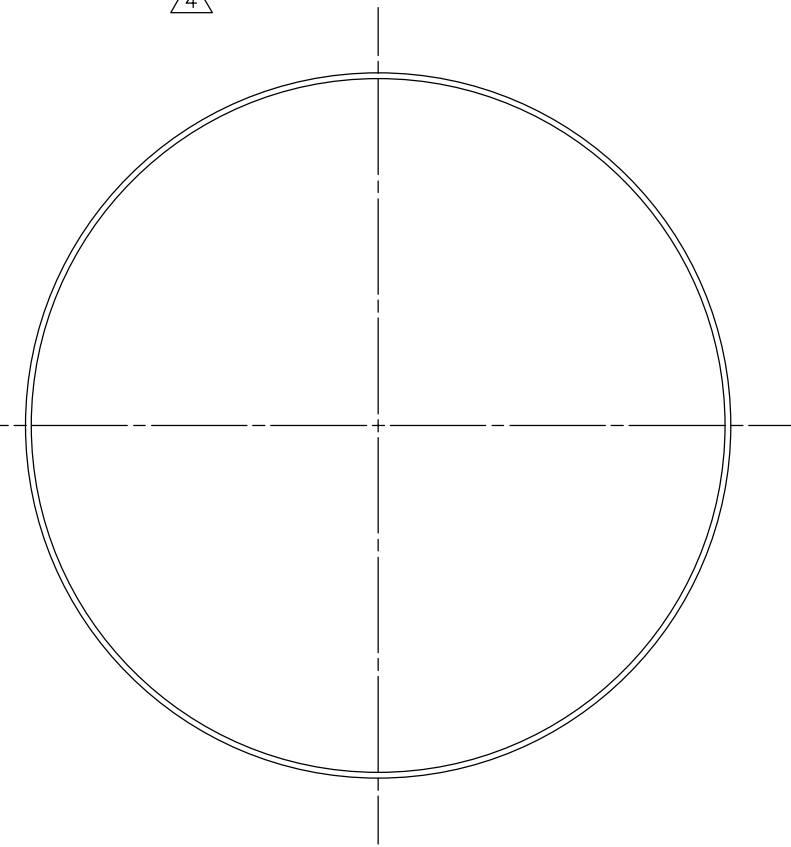
NOTES: (UNLESS OTHERWISE SPECIFIED)

1. ALL DIMENSIONS ARE IN MILLIMETERS AND DEGREES-MINUTES.
2. DRAWING TO BE INTERPRETED PER ANSI Y14.5M-1982.
3. POLISH ALL FACES, EDGES AND CHAMFERS PER SPECIFICATION LIGO-E960093-D.
4. REGISTRATION MARK IS LOCATED COINCIDENT WITH THE REGISTRATION MARK DRAWN ON THE BLANK ±5mm.

REV	DATE	DRAWN BY	CHECKED	DCC	DCN/DESCRIPTION
A	9-8-96	C CONLEY	D COYNE		E960113/INITIAL RELEASE
B	10-9-97	C CONLEY			E970065



ETCH OR GRIND 0.25mm ±0.05mm WIDE X 80mm ±5mm LONG LINE WITH ARROW POINTING TOWARD SURFACE #1, PARALLEL TO -A- WITHIN ±0.10mm, CENTERED BETWEEN SURFACES #1 AND #2, AND AT LOCATION OF MINIMUM PART THICKNESS ±1°0'.



CALIFORNIA INSTITUTE OF TECHNOLOGY		LIGO PROJECT	
DRWN	C CONLEY	DATE	9-8-96
CHKD		CAD FILE: D960787_B.asc	
ENGR		dcc file: /home/dcc/docs/D960787-B.pdf	
APPD			
MATERIAL: FUSED SILICA PER LIGO-E960095-D		INPUT TEST MASS SUBSTRATE, 4K	
DO NOT SCALE DRAWING		SCALE: NTS	SIZE DRAWING NUMBER
		B	D960787-B-D
		SHEET	1 OF 1